



Friends of Maatsuyker Island



Catalogue of Objects on
Maatsuyker Island

Parts 1 & 2 - 2013 & 2017



Catalogue of Objects on Maatsuyker Island 2017
for
Friends of Maatsuyker Island (FOMI) Wildcare Inc.

Introduction:

The Tasmanian Heritage Register states that: "Maatsuyker Island Lightstation, built in 1891, is of historic heritage significance because it represents the principal characteristics of a group of Late Victorian Lightstation Buildings, including the remains of a rare supply haulage system and unusually intact lighthouse".

In 2008, FOMI compiled an archive of photographs from John Cook, a lighthouse keeper in Tasmania for almost 25 years. FOMI was also aware of the multitude of objects of varying types and interests on Maatsuyker Island and, in order to plan appropriate preservation and interpretation strategies, it was decided the objects must be fully recorded.

In 2013, FOMI compiled the first part of a catalogue of objects on the Island with over 400 records. Now, in 2017, this new catalogue completes the task. The new work has been combined with the 2013 catalogue to create one catalogue of objects recorded on Maatsuyker Island. The 2013 catalogue will no longer be available. This single updated volume includes over 650 records. New records were mostly made in the workshop, and garden areas. The restoration works of the lighthouse, undertaken in March 2016 have also been recorded. Records from the Keepers Tree have been expanded and can be printed by request as a separate booklet.

This PDF is from a "FilemakerPro" database and can be accessed through the Wildcare (FOMI Branch) website. It is hoped that public access will arouse interest and perhaps attract further information about Maatsuyker Island in general or the objects catalogued. If anyone feels they have information to add relating to objects displayed please contact Friends of Maatsuyker Island Wildcare Inc. Email: wildcaremaatsuyker@gmail.com; or Visit www.wildcaretas.org.au or email Rosanna Cameron: rcameron@tassie.net.au.

Acknowledgement:

The Friends of Maatsuyker Island (FOMI) Wildcare Inc. thank the *Maritime Museums of Australia Project Support Scheme (MMAPSS)*, funded by the Australian Government, for the financial support for both the 2013 & 2017 work and the production of the 2013 catalogue and this combined catalogue. FOMI also acknowledges the Tasmania Parks & Wildlife Service for its ongoing support. Rosanna Cameron compiled the catalogue with assistance on the Island from Anne Piesse (2013) and Ailsa Fergusson (2017) and administrative support from Marina Campbell (President, FOMI) and Derek Inglis (Treasurer, FOMI).

Copyright:

This document and the photos herein are copyright. They may not be displayed, made public or used outside the context of the document. Any reproduction, duplication or public use of the material must first be sanctioned by the FOMI Committee, representative or Rosanna Cameron.

Index: see record category Top Right of each record

Details	Page Number	Details	Page Number
01. Tower: Condition Comparison, Prisms, Restoration	1	15. Caretakers' Equipment	104
02. Tower: Mechanism	17	16. House fittings	109
03. Tower: Parts	19	17. Outdoors: Art, Farming, Garden, General	114
04. Keepers' Equipment	25	18. Buildings	125
05. Lantern Equipment	38	19. Geology	126
06. Electrical Equipment	44	20. Natural History	127
07. Communications	47	21. Island History	128
08. Generator Equipment	53	22. Records	129
09. Haulage	54	23. Flotsam	131
10. Meteorological	68	24. Workshop objects	132
11. Domestic: objects	69	25. AMSA	151
12. Domestic: children	85	26. Signs	151
13. Domestic: Bottles	89	27. Signs Keepers Tree	154
14. Domestic: Cans	104		

Numbers: Objects are issued with a number as they are first placed in the database. Later when objects are sorted into categories the numbers do not always remain consecutive. This can be confusing. Therefore in this, the final issue of this catalogue, the database numbers have been placed lower on the record with the year of cataloguing and records have then been issued with a new number. These new numbers, which are given prominence at the top left of each record run consecutively through the catalogue. Except in the section on the Keepers' Tree where the records start again at number 1. This is done so this section can be printed as a "stand alone" booklet. I hope this will make navigating the catalogue easier.

Rosanna Cameron

499 **Maker** Chance Brothers UK **01. Tower: Condition**
Object Full Tower **1889-90**
 Original fittings

Medium Building

Notes These entries show comparison between 2005 & 2017.
 PWS/FOMI restoration works undertaken March 2016
 lighthouse restorers painting contractors Mark Sheriff, Mick
 McNamara, Brian Burford.
 Image 1 2005, 2 2007, 3 2013, 2017
 Photos 1,2,3, Rosanna Cameron
 Photo 4 Marina Campbell

Location Tower



500 **Maker** Chance Brothers UK **01. Tower: Condition**
Object Tower top **1889-90**
 Original fittings

Medium Building

Notes These entries show comparison between 2005 & 2017.
 Image 1 & 2 2005, 3 2013, 4 2017
 Photos 1,2,3, Rosanna Cameron
 Photo 4 Marina Campbell post restoration work
 PWS/FOMI restoration works undertaken March 2016
 lighthouse restorers painting contractors Mark Sheriff, Mick
 McNamara, Brian Burford.

Location Tower



501 **Maker** Chance Brothers UK **01. Tower: Condition**
Object Railing & lattice **1889-90**
 Original fittings

Medium Building

Notes This is a series of entries and to show comparison between
 2005 & 2017.
 Image 1 2005, Image 2 2007, 3 2013 Photos taken by
 Rosanna Cameron.
 Photo 4 Marina Campbell post restoration work.
 PWS/FOMI restoration works undertaken March 2016
 lighthouse restorers painting contractors Mark Sheriff, Mick
 McNamara, Brian Burford.

Location Tower floor 3



2017 501 **Maker** Chance Brothers UK **01. Tower: Condition**
Object Railing & Lattice **1889-90**
 Original fittings

Medium Building

Notes This is a series of entries and to show comparison between 2005 & 2017.

Image 1 2005, Image 2 2007, 3 2013

Photos taken by Rosanna Cameron

Photo 4 Marina Campbell post restoration work.

PWS/FOMI restoration works undertaken March 2016

lighthouse restorers painting contractors Mark Sheriff, Mick McNamara, Brian Burford.



Location Tower floor 3

2017 502 **Maker** Chance Brothers UK **01. Tower: Condition**
Object Dome Original fittings **1889-90**

Medium Iron

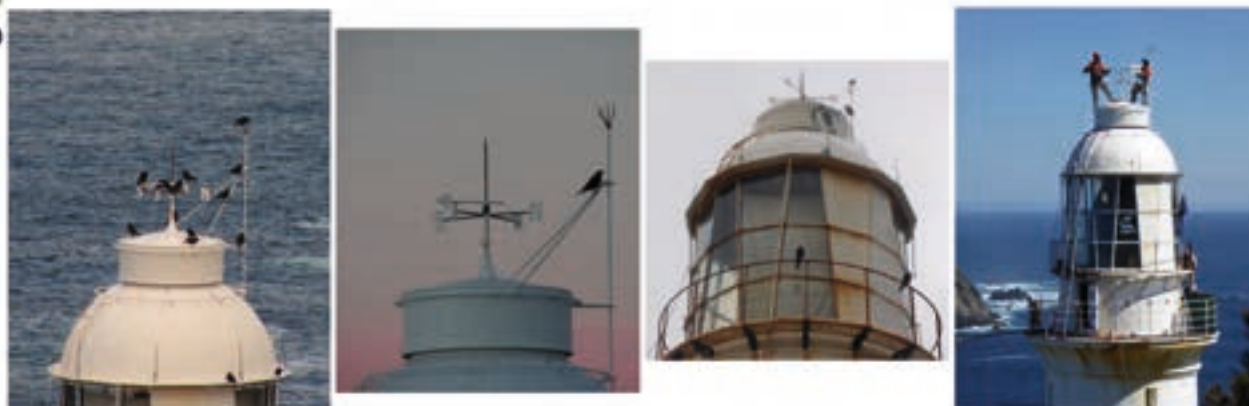
Notes This is a series of entries and to show comparison between 2005 & 2013. Image 1 2005, 2 2013, 3 2013

Photos taken by Rosanna Cameron

Photo 4 Marina Campbell during restoration work.

PWS/FOMI restoration works undertaken March 2016

lighthouse restorers painting contractors Mark Sheriff, Mick McNamara, Brian Burford.



Location Tower floor 3

2017 503 **Maker** J & R Duff Contractors Hobart **01. Tower: Condition**
Object Window **1889-90**

Medium Building

Notes This is a series of entries and to show comparison between 2005 & 2017. 3 Images from 2005,

Photos taken by Rosanna Cameron

Image 4 Ailsa Ferguson P1000395 2017



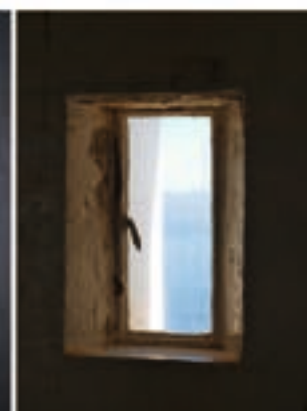
Location Tower floor 2

504 **Maker** J & R Duff Contractors Hobart **01. Tower: Condition**
Object Tower windows **1889-90**

2017

Medium Building
 Entries show comparison between 2005 & 2017. Image 1
Notes 2005, 2 & 3 2013
 Photos taken by Rosanna Cameron
 image 4, P1000404 Ailsa 2017

Location Tower floor 2

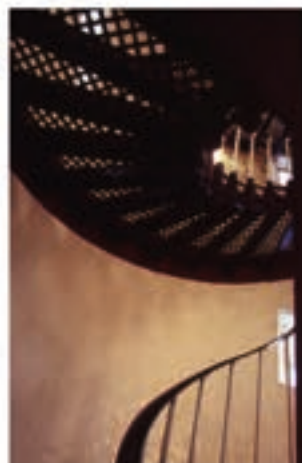


506 **Maker** J & R Duff Contractors Hobart **01. Tower: Condition**
Object Staircase **1889-90**

2017

Medium
Notes Photos showing staircase and wall condition.
 1 2005, 2 & 3 2013, R Cameron 4 2017 Ailsa
 Ailsa P1010189

Location Tower level 1



001 **Maker** Chance Brothers **01. Tower: Prisms**
Object Prisms/Fresnel Lens, catadioptric prism top
 section **1890s**

2013

Medium Glass crystal 548 prisms
 These prisms are mounted on a clockwork mechanism.
Notes Picture 1, 2 & 3 Rosanna Cameron
 Picture 4 John Cook lighting lamp. This image is copyright to John
 Cook.

Location Tower, Top



- 778 **Maker** Chance Brothers **01. Tower: Prisms**
Object Prisms/Fresnel Lens, catadioptric prism top section **1890s**
Medium Glass crystal 548 prisms
 These prisms are mounted on a clockwork mechanism.
Notes Ailsa photo 1000323, 24, 25, 26



Location Tower, Top

- 597 **Maker** Mark Sheriff 2017 **01. Tower: Restoration**
Object Working on Balcony of tower
Medium
Notes PWS/FOMI restoration works undertaken March 2016
 lighthouse restorers painting contractors Mark Sheriff, Mick
 McNamara, Brian Burford.
 Ailsa Photo P1010205, 201, 202,203
 4 Repeat photograph Marina Campbell



Location Tower Exterior

- 598 **Maker** Mark Sheriff 2017 **01. Tower: Restoration**
Object Door exterior at base
Medium Brick and concrete
Notes PWS/FOMI restoration works undertaken March 2016
 lighthouse restorers painting contractors Mark Sheriff, Mick
 McNamara, Brian Burford.
 Ailsa Photo P1010197, 204, 205



Location Tower Exterior

- 13** **Maker** Mark Sheriff **01. Tower: Restoration**
Object Fire Bucket **3/2016**
Medium Painted with Maat picture
Size cms
Condition Good, newly painted **Location** Top of tower
Notes This is a previously unrecorded bucket. Probably one of the ones used
2017 to catch water near the lantern in 2013. They were not recorded then.
601 These buckets have been placed in Museum but did not warrant individual records.



- 14** **Maker** Mark Sheriff **01. Tower: Restoration**
Object Detail of Paint layering **2016**
Medium Various paints
Size cms
Condition **Location** Tower
Notes This was from start of Lantern and Tower overhaul in March 2016
2017
602



- 15** **Maker** Chance Brothers UK, original fittings **01. Tower: Restoration**
Object Small vent to right of door **1890s**
Medium Brass
Size cms 12 diam
Condition Fair, tarnished **Location** Tower: lower floor
Notes 1. Ailsa picture 364
2017 2. RC photograph 2013 P2279483
603



- 16** **Maker** Chance Brothers UK, original fittings **01. Tower: Restoration**
Object Vent **1890s**
Medium Brass
Size cms 12 diam
Condition Fair, painted **Location** Tower
Notes Ailsa picture 365
2017
604



17 **Maker** Chance Brothers UK
Object Original fitting vent
Medium Brass
Size cms Looks like smaller one 12 diam
Condition Fair, painted
Notes Ailsa picture 366
 2017
 605

01. Tower: Restoration

1890s

Location Tower



18 **Maker** Chance Brothers
Object missing fitting
Medium
Size cms
Condition
Notes Ailsa picture 367
 2017
 606

01. Tower: Restoration

Location Tower



19 **Maker** Chance Brothers UK, missing fitting
Object Vent
Medium
Size cms
Condition
Notes Ailsa picture 368
 2017
 607

01. Tower: Restoration

Location Tower



20 **Maker** Chance Brothers UK, missing fitting
Object Vent
Medium
Size cms
Condition
Notes Ailsa picture 369
 2017
 608

01. Tower: Restoration

Location Tower



- 21** **Maker** Chance Brothers UK, original fittings **01. Tower: Restoration**
Object Vent **1890s**
Medium Brass
Size cms Smaller one? 12 diam
Condition Fair, painted **Location** Tower
Notes Ailsa picture 370
2017
609



- 22** **Maker** Chance Brothers UK, missing fitting **01. Tower: Restoration**
Object Vent
Medium
Size cms
Condition **Location** Tower
Notes Ailsa picture 371
2017
610



- 23** **Maker** Chance Brothers UK, missing fitting **01. Tower: Restoration**
Object Vent
Medium
Size cms
Condition **Location** Tower
Notes Ailsa picture 372
2017
611



- 24** **Maker** Chance Brothers UK, original fittings **01. Tower: Restoration**
Object Vent x 2 **1890s**
Medium Brass
Size cms Looks like smaller one? 12 diam
Condition Fair, painted **Location** Tower
Notes Ailsa picture 373
2017
612



- 25** **Maker** Chance Brothers UK, original fittings **01. Tower: Restoration**
Object Vent **1890s**
Medium Brass
Size cms Smaller one 12 diam
Condition Fair, painted **Location** Tower
Notes Ailsa picture 374
2017
613



- 26** **Maker** Chance Brothers UK, original fittings **01. Tower: Restoration**
Object Vent - this is item 006 in Catalogue Part 1 **1890s**
Medium Brass
Size cms 24 diam , 4 cm deep with knob
Condition Fair tarnished **Location** Tower
Notes Ailsa picture 377
2017
614
 3 RCameron image from 2013 P2227674



- 27** **Maker** Chance Brothers UK, original fittings **01. Tower: Restoration**
Object Vent - this is item 007 in other group of photos from 2013 **1890s**
Medium Brass
Size cms 24 diam , 4 cm deep with knob
Condition Fair tarnished **Location** Tower
Notes Ailsa picture 37
2017
615
 Pictured from lower floor upwards in sequence through tower
 3 RCameron image from 2013 P2227675



- 28** **Maker** Chance Brothers UK, original fittings **01. Tower: Restoration**
Object Vent - this is item 008 in other group of photos from 2013 **1890s**
Medium Brass
Size cms 24 diam , 4 cm deep with knob
Condition Fair tarnished **Location** Tower
Notes Ailsa picture 379
2017
616
 3 RCameron image from 2013 P2227676



- 29** **Maker** Chance Brothers UK, original fittings **01. Tower: Restoration**
Object Vent - this is item 009 in other group of photos from 2013 **1890s**
Medium Brass
Size cms 24 diam , 4 cm deep with knob
Condition Fair tarnished **Location** Tower
Notes Ailsa picture 380
2017 3 RCameron image from 2013 P2227677
617



- 30** **Maker** Chance Brothers UK, original fittings **01. Tower: Restoration**
Object Vent - this is item 010 in other group of photos from 2013 **1890s**
Medium Brass
Size cms 24 diam , 4 cm deep with knob
Condition Fair tarnished **Location** Tower
Notes Ailsa picture 381
2017 3 RCameron image from 2013
618



- 31** **Maker** Chance Brothers UK, original fittings **01. Tower: Restoration**
Object Vent - this is item 011 in other group of photos from 2013 **1890s**
Medium Brass
Size cms 24 diam , (knob missing)
Condition Fair tarnished, (knob missing) **Location** Tower
Notes Ailsa picture 382
2017 3 RCameron image from 2013 P2227682
619



- 32** **Maker** Chance Brothers UK, original fittings **01. Tower: Restoration**
Object Vent - this is item 012 in other group of photos from 2013 **1890s**
Medium Brass
Size cms 24 diam , (knob missing)
Condition Fair tarnished, (knob missing) **Location** Tower By Mechanism
Notes Ailsa picture 383
2017 3 RCameron image from 2013 P2227683
620



- 33** **Maker** Chance Brothers UK, original fittings **01. Tower: Restoration**
Object Vent - this is item 013 in other group of photos from 2013 **1890s**
Medium Brass
Size cms 24 diam , 4 cm deep with knob
Condition Fair covered in paint **Location** Tower
Notes Ailsa picture 3843
2017 R Cameron image from 2013 P2227685
621



- 34** **Maker** Chance Brothers UK, original fittings **01. Tower: Restoration**
Object Vent - this is item 014?? in other group of photos from 2013 **1890s**
Medium Brass
Size cms 24 diam , 4 cm deep with knob
Condition Fair tarnished, **Location** Tower
Notes Ailsa picture 385
2017 R Cameron image from 2013 P2227686
622



- 35** **Maker** Chance Brothers UK, original fittings **01. Tower: Restoration**
Object Vent - this is item 015 in other group of photos from 2013 **1890s**
Medium Brass
Size cms 24 diam , 4 cm deep with knob
Condition Fair tarnished, **Location** Tower
Notes Ailsa picture 386
2017 R Cameron image from 2013 P2227687
623



- 36** **Maker** Chance Brothers UK original fittings **01. Tower: Restoration**
Object Vent - this is item 016 in other group of photos from 2013 **1890s**
Medium Brass
Size cms 24 diam , 4 cm deep with knob
Condition Fair tarnished, **Location** Tower
Notes Ailsa picture 387
2017 R Cameron image from 2013 P2227688
624



- 37** **Maker** Chance Brothers UK original fittings **01. Tower: Restoration**
Object Vent - this is item 017 in other group of photos from 2013 **1890s**
Medium Brass
Size cms 24 diam , 4 cm deep with knob
Condition Fair tarnished, **Location** Tower
Notes Ailsa picture 388
2017 R Cameron image from 2013
625



- 38** **Maker** Chance Brothers UK, original fittings **01. Tower: Restoration**
Object Vent - this is item 004 in other group of photos from 2013 **1890s**
Medium Brass
Size cms 24 diam , 4 cm deep with knob
Condition Fair tarnished, **Location** Tower
Notes Ailsa picture 389
2017 Picture 2 R Cameron 2013 P2227672
626



- 39** **Maker** Chance Brothers UK, original fittings **01. Tower: Restoration**
Object Vent - this may not be in the group of vents in 2013 photos **1890s**
Medium Brass
Size cms 24 diam , 4 cm deep with knob
Condition Fair tarnished, **Location** Tower
Notes Ailsa picture 390
2017
627



- 40** **Maker** Chance Brothers? UK, part of original **01. Tower: Restoration**
Object Window fitting **1890s**
Medium
Size cms
Condition As painted 2016 **Location** Tower
Notes Ailsa picture 375
2017
628



- 41** **Maker** J & R Duff Contractors Hobart **01. Tower: Restoration**
Object Window **1890s**
 Medium
 Size cms
 Condition Location Tower level 2
 Notes Ailsa picture 395
2017 Windows photographed in sequence photos 395 - 398 Level 2
630



- 42** **Maker** J & R Duff Contractors Hobart **01. Tower: Restoration**
Object Window **1890s**
 Medium
 Size cms
 Condition Location Tower level 2
 Notes Ailsa picture 396
2017 Windows photographed in sequence photos 395 - 398 Level 2
631



- 43** **Maker** J & R Duff Contractors Hobart **01. Tower: Restoration**
Object Window **1890s**
 Medium
 Size cms
 Condition Location Tower level 2
 Notes Ailsa picture 397
2017 Windows photographed in sequence photos 395 - 398 Level 2
632



- 44** **Maker** J & R Duff Contractors Hobart **01. Tower: Restoration**
Object Window **1890s**
 Medium
 Size cms
 Condition Location Tower level 2
 Notes Ailsa picture 398
2017 Windows photographed in sequence photos 395 - 398 Level 2
633



- 45** **Maker** J & R Duff Contractors Hobart **01. Tower: Restoration**
Object Window **1890s**
Medium
Size cms
Condition Location Tower level 1
Notes Ailsa picture 399, 400
2017 Windows photographed in sequence photos 395 - 398 Level 2
634



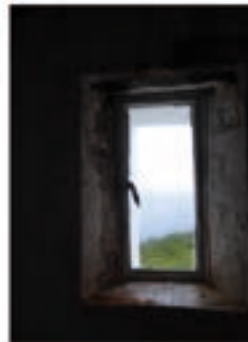
- 46** **Maker** J & R Duff Contractors Hobart **01. Tower: Restoration**
Object Window **1890s**
Medium
Size cms
Condition Location Tower level 1
Notes Ailsa picture 401
2017 Windows photographed in sequence photos 399 - 404 & 408 Level 1
635



- 47** **Maker** J & R Duff Contractors Hobart **01. Tower: Restoration**
Object Window **1890s**
Medium
Size cms
Condition Location Tower level 1
Notes Ailsa picture 402
2017 Windows photographed in sequence photos 399 - 404 & 408 Level 1
636



- 48** **Maker** J & R Duff Contractors Hobart **01. Tower: Restoration**
Object Window **1890s**
Medium
Size cms
Condition Location Tower level 1
Notes Ailsa picture 403, 404
2017 Windows photographed in sequence photos 399 - 404 & 408 Level 1
637



- 49** **Maker** J & R Duff Contractors Hobart **01. Tower: Restoration**
Object Window **1890s**
 Medium
 Size cms
 Condition Location Tower level 1
 Notes Ailsa picture 404
2017 Windows photographed in sequence photos 399 - 404 & 408 Level 1
638



- 50** **Maker** J & R Duff Contractors Hobart **01. Tower: Restoration**
Object Window **1890s**
 Medium
 Size cms
 Condition Location Tower Ground Floor
 Notes Ailsa picture 409
2017 Windows photographed in sequence photos 409 - 411 Ground Floor
639



- 51** **Maker** J & R Duff Contractors Hobart **01. Tower: Restoration**
Object Window **1890s**
 Medium
 Size cms
 Condition Location Tower Ground Floor
 Notes Ailsa picture 410
2017 Windows photographed in sequence photos 409 - 411 Ground Floor
640



- 52** **Maker** J & R Duff Contractors Hobart **01. Tower: Restoration**
Object Window **1890s**
 Medium
 Size cms
 Condition Location Tower Ground Floor
 Notes Ailsa picture 411 RH picture RCameron 2013
2017 Windows photographed in sequence photos 409 - 411 Ground Floor
641



53 **Maker** Chance Brothers UK original fittings**Object**

Medium

Size cms

Condition

Notes

2017

759

Ailsa Photo P1000318, 319

01. Tower: Restoration

Location

54 **Maker** Chance Brothers UK original fittings**Object**

Medium

Size cms

Condition

Notes

2017

760

Ailsa Photo P1000320, 322

01. Tower: Restoration

Location

55 **Maker** Mark Sheriff 2017**Object**

Mark Sheriff on Balcony with cleaning gear

Medium

Size cms

Condition

Notes

2017

798

Ailsa Photo P1000328,

01. Tower: Restoration

Location Top of tower

56 **Maker** Mark Sheriff 2017**Object**

Cleaned back brickwork, by stairs

Medium

Size cms

Condition

Notes

2017

799

Ailsa Photo P1010189, 195, 82

01. Tower: Restoration

Location Tower Interior



- 57** **Maker** Mark Sheriff 2017 **01. Tower: Restoration**
Object Cleaned back brickwork, by windows and fittings.
Medium
Size cms
Condition
Notes Ailsa Photo P1010187, 188
2017
800



Location Tower Interior

- 58** **Maker** Mark Sheriff 2017 **01. Tower: Restoration**
Object Cleaned back brickwork, with steel beams
Medium
Size cms
Condition
Notes Ailsa Photo P1010186, & 85,
2017
801



Location Tower Interior

- 59** **Maker** Mark Sheriff 2017 **01. Tower: Restoration**
Object Metal Staircase
Medium Cast iron with restoration work
Size cms
Condition
Notes Ailsa Photo P1010194, 196.
2017
802



Location Tower Interior

- 60** **Maker** Mark Sheriff 2016 **01. Tower: Restoration**
Object Time capsule
Medium Cylinder with objects inside
Size cms
Condition
Notes Placed at top of brickwork in tower, immediately adjacent to top step
of stairs. Contains documents relating to restoration work,
Ailsa Photo P1010190, 9, 92
2017
804



Location Tower Interior

61 **Maker** Mark Sheriff 2017
Object Brickwork exterior at base
Medium Brick and concrete
Size cms
Condition
Notes
2017
805 Ailsa Photo P1010193

01. Tower: Restoration

Location Tower Exterior



62 **Maker** Chance Brothers
Object Clockwork mechanism in metal and glass cabinet
Medium brass etc.
Size cms 138.6h x 123 x 123
Condition Working order
Notes For turning prisms -
2013
002

02. Tower: Mechanism
1890s

Location Tower: Third floor



63 **Maker** Chance Brothers
Object Handle for weights
Medium
Size cms Arm 43.2 lower 22.5 handle 28.7 to join to arm
Condition Good
Notes Handle for winding up the weights which operate the mechanism
2013
029

02. Tower: Mechanism

Location Tower: Third floor



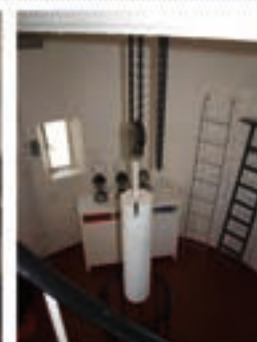
64 **Maker** Chance Brothers
Object Case enclosing chain for weights
Medium Metal painted black
Size cms Estimate: 108.5 h x 52. 5 diam.
Condition Good
Notes On the second floor there is a railing on the third this more covered protection. The picture showing the Keeper John Cook on the same floor of the tower is copyright to John Cook.
2013
043

02. Tower: Mechanism
1890s

Location Tower, second floor



- 65** **Maker** Chance Brothers **02. Tower: Mechanism**
Object Clockwork mechanism with weights for light rotation **1890s**
Medium Metal chain with weights and railing
Size cms From wheel to base of weights 134 cms., diam. of weights 19.5.
Condition Working order **Location** Tower, First floor
Notes Overall length of weights 88 cms.
2013 This was the original radio/lounge room in JC's photos
050



- 66** **Maker** Chance Brothers **02. Tower: Mechanism**
Object Weights, 11 in situ painted with white enamel paint **1890s**
Medium Weights iron + lead?
Size cms 7.5 x 19.5 diam each
Condition Working order **Location** Tower, First floor
Notes Total weight: 352 lbs. (159 kg). Part of original tower mechanism
2013 exported from UK This was the original radio room in JC's photos
051



- 67** **Maker** Chance Brothers **02. Tower: Mechanism**
Object Spare weights (3) **1890s**
Medium Iron with lead
Size cms Height 75 x 19 diam
Condition Working order **Location** Tower, First floor
Notes Part of original tower mechanism exported from UK
2013 This was the original radio room in JC's photos
052



- 68** **Maker** Chance Brothers **02. Tower: Mechanism**
Object Smaller weight **1890s**
Medium Iron with lead
Size cms 5 cms height x 15 cm diam
Condition Working order **Location** Tower, First floor
Notes Part of original tower mechanism exported from UK
2013 This was the original radio room in JC's photos
053



- 69** **Maker** Chance Brothers **02. Tower: Mechanism**
Object Railing for Mechanism **1890s**
Medium Iron painted with black enamel paint, 10 uprights, convex round top
Size cms 108.5 h x 52. 5 diam
Condition Working order **Location** Tower, First floor
Notes Part of original tower mechanism exported from UK. This was the original radio room in JC's photos it had wire around it in 1977. This image is copyright to John Cook.
2013
054



- 70** **Maker** Chance Brothers **02. Tower: Mechanism**
Object 12 brass clasps with threaded pin foot and wing nuts **1890s**
Medium Brass ? (copper)
Size cms 16.5 Length to head of pin; foot 7 cms x 2 cms wide x 0.8 mm.
Condition Good **Location** Tower, First floor
Notes Wing nut 5.8 x 6.8. These are the fixings for the Storm Panes
2013
055



- 71** **Maker** Chance Brothers **02. Tower: Mechanism**
Object Nuts and bolts for ? **1890s**
Medium Brass ? (copper)
Size cms 12 cm overall; base 6.5 x 6.3 2.5
Condition Good **Location** Tower, First floor
Notes These appear to be intricately made parts from the mechanism - they are either alternative parts or spare?
2013
056



- 72** **Maker** Chance Brothers UK, part of original fittings **03. Tower: Parts**
Object Vent 1 by phone **1890s**
Medium Brass
Size cms 24 diam , 4 cm deep with knob
Condition Fair, tarnished **Location** Tower: Third floor
Notes These vents were used to ventilate the tower in the days of the oil burning lamp. If improperly adjusted the light could either flare or go out.
2013
004
 Picture 4 Ailsa 389



- 73** **Maker** Chance Brothers UK, part of original fittings **03. Tower: Parts**
Object Vent 2 to right round tower **1890s**
Medium Brass
Size cms 24 diam , 4 cm deep with knob
Condition Fair, tarnished **Location** Tower: Third floor
Notes Photo R Cameron 2013
2013
005



- 74** **Maker** Chance Brothers UK, part of original fittings **03. Tower: Parts**
Object Vent 3 to right round tower **1890s**
Medium Brass
Size cms 24 diam , 4 cm deep with knob
Condition Fair, tarnished **Location** Tower: Third floor
Notes Picture 2 shows vent
 Photo R Cameron 2013
2013
006



- 75** **Maker** Chance Brothers UK, part of original fittings **03. Tower: Parts**
Object Vent 4 to right round tower **1890s**
Medium Brass
Size cms 24 diam , 4 cm deep with knob
Condition Cleaned by 2017. 2013 LH Fair, **Location** Tower: Third floor
Notes LH Photo R Cameron 2013 RH photo Ailsa 378
2013
EDIT
2017
007



- 76** **Maker** Chance Brothers UK, part of original fittings **03. Tower: Parts**
Object Vent 5 to right round tower **1890s**
Medium Brass
Size cms 24 diam , 4 cm deep with knob
Condition Cleaned by 2017. 2013 LH Fair, **Location** Tower: Third floor
Notes LH Photo R Cameron 2013 RH photo Ailsa 379
2013
EDIT
2017
008



- 77** **Maker** Chance Brothers UK, part of original fittings **03. Tower: Parts**
Object Vent 6 to right round tower **1890s**
Medium Brass
Size cms 24 diam , 4 cm deep with knob
Condition RH photo Cleaned by 2017. 2013 **Location** Tower: Third floor
Notes LH Photo R Cameron 2013 RH photo Ailsa 380
 2013
 EDIT
 2017
 009



- 78** **Maker** Chance Brothers UK, part of original fittings **03. Tower: Parts**
Object Vent 7 to right round tower **1890s**
Medium Brass
Size cms 24 diam , 4 cm deep with knob
Condition Fair, tarnished **Location** Tower: Third floor
Notes LH Photo R Cameron 2013 Picture 2 shows vent cleaned in 2005
 2013
 010



- 79** **Maker** Chance Brothers UK, part of original fittings **03. Tower: Parts**
Object Vent 8 to right round tower **1890s**
Medium Brass
Size cms Photo R Cameron 2013 24 diam (knob missing)
Condition Fair, tarnished, Knob missing **Location** Tower: Third floor
Notes 14 vents (15 Photos) now some with out knob
 2013
 Photo R Cameron 2013
 011



- 80** **Maker** Chance Brothers UK, part of original fittings **03. Tower: Parts**
Object Vent 9 to right round tower **1890s**
Medium Brass
Size cms 24 diam (knob missing)
Condition Fair, tarnished, Knob missing **Location** Tower: Third floor
Notes 14 vents (15 Photos) now some with out knob 8 9
 2013
 Photo R Cameron 2013
 012



- 81** **Maker** Chance Brothers UK, part of original fittings **03. Tower: Parts**
Object Vent 10 to right round tower **1890s**
Medium Brass
Size cms 24 diam , 4 cm deep with knob
Condition Painted over, some paint later **Location** Tower: Third floor
Notes 14 vents (15 Photos) now some with out knob 8 9
2013
013 Photo R Cameron 2013



- 82** **Maker** Chance Brothers UK, part of original fittings **03. Tower: Parts**
Object Vent 11 to right round tower **1890s**
Medium Brass
Size cms 24 diam , 4 cm deep with knob
Condition Fair tarnished **Location** Tower: Third floor
Notes 14 vents (15 Photos) now some with out knob
2013
014 Photo R Cameron 2013



- 83** **Maker** Chance Brothers UK, part of original fittings **03. Tower: Parts**
Object Vent 12 to right round tower **1890s**
Medium Brass
Size cms 24 diam , 4 cm deep with knob
Condition Fair tarnished **Location** Tower: Third floor
Notes
2013
015



- 84** **Maker** Chance Brothers UK, part of original fittings **03. Tower: Parts**
Object Vent 13 to right round tower **1890s**
Medium Brass
Size cms 24 diam , 4 cm deep with knob
Condition Fair tarnished **Location** Tower: Third floor
Notes Photo R Cameron 2013
2013
016



- 85** **Maker** Chance Brothers UK, part of original
Object Vent 14 to right round tower
Medium Brass
Size cms 24 diam , 4 cm deep with knob
Condition Fair, tarnished
Notes Photo R Cameron 2013
2013
017

03. Tower: Parts
 1890s

Location Tower: Third floor



- 86** **Maker** Chance Brothers UK part of original tower
Object Small vent to right of door
Medium Brass
Size cms 12 diam
Condition Fair, tarnished
Notes Left hand photo 2013: This is a single smaller vent by the door
2013
018

03. Tower: Parts
 1890s

Location Tower: Third floor



- 87** **Maker** Chance Brothers with later repair
Object Wind vane
Medium Painted (thick white enamel) with copper wings and steel or galvanised
Size cms 54 cms long approx. x 31 wide
Condition Corroded and paint cracking and
Notes Close inspection shows a steel bar or later than 1890 type. It is probable that these are the original wind vein wings with a later repair.
2013
EDIT
2017
035

03. Tower: Parts

Location Tower, second floor



- 88** **Maker**
Object Black wall cupboard
Medium Plywood
Size cms 50 cms h x 55.4 w overall x 17.5 overall depth
Condition Good
Notes Not sure what this was for -
2013
062

03. Tower: Parts

Location Tower, Ground floor



- 89 **Maker** J & R Duff?
Object Plaque on inner door
Medium Brass
Size cms 7.4 x 12.8
Condition Good
Notes Features in JC's photographs
 2013
 063

03. Tower: Parts

pre

Location Tower, Ground floor



- 90 **Maker** Caretaker?
Object Decorative door lintel
Medium Wood
Size cms 100 cms approx. (not measured)
Condition Good
Notes
 2013
 064

03. Tower: Parts

Location Tower, Ground floor



- 91 **Maker**
Object Piece of down Pipe from the tower
Medium Painted copper
Size cms 98.0 long x 3. diam
Condition Paint flaking
Notes Found in garden 3.07.03 RNJ
 2013
 187
 New photos from Ailsa 2017 573-575

03. Tower: Parts

Location Museum Room Q 1



- 92 **Maker**
Object Two clips ? from Tower (Chance Brothers?)
Medium Iron
Size cms See photo 12.0 x 5.6
Condition Fair
Notes Perhaps these are spare clips for tower equipment?
 2013
 245

03. Tower: Parts

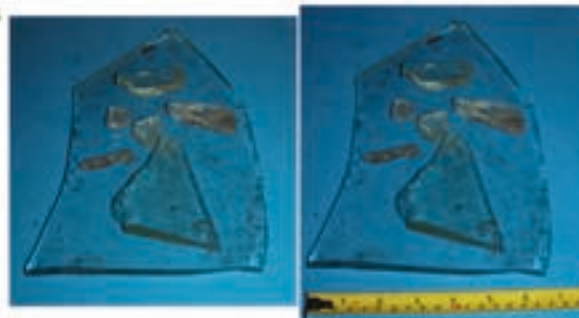
Location Museum Room Q 1



- 93** **Maker**
Object Glass from tower
Medium Glass
Size cms Various sizes see photo
Condition Broken pieces
Notes Found in bush near the tower
2013
252

03. Tower: Parts

Location Museum Room Q 1



- 94** **Maker**
Object Flagpole attachment for boom extension
Medium Iron
Size cms 49 x 35 x 10
Condition Poor very rusted
Notes New information given by Mark Sherriff 2017 Moved from Outdoors to Tower. Image 359 March 2017
2013
EDIT
2017
410

03. Tower: Parts

Location Changed moved from



- 95** **Maker** J & R Duff?
Object Storm Panes
Medium
Size cms
Condition
Notes Ailsa picture 412
2017
642

03. Tower: Parts

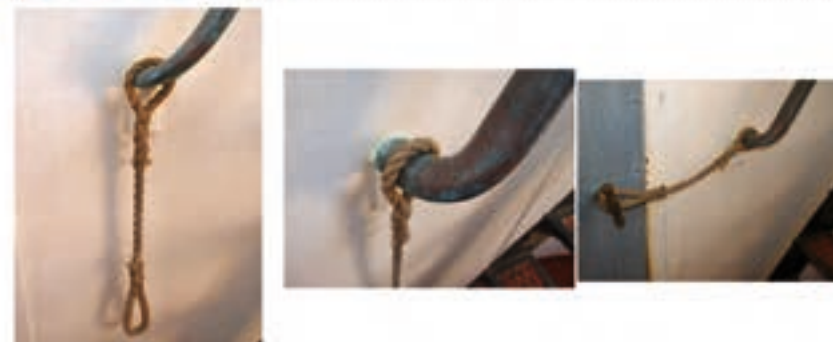
Location At base of tower



- 96** **Maker** Light keepers
Object Rope
Medium Hemp
Size cms 50 cm length
Condition Fair
Notes This is used to make sure the door does not get blown open. The splicing would have had to be done on the spot by one of the keepers.
2013
020

04. Keepers' Equipment

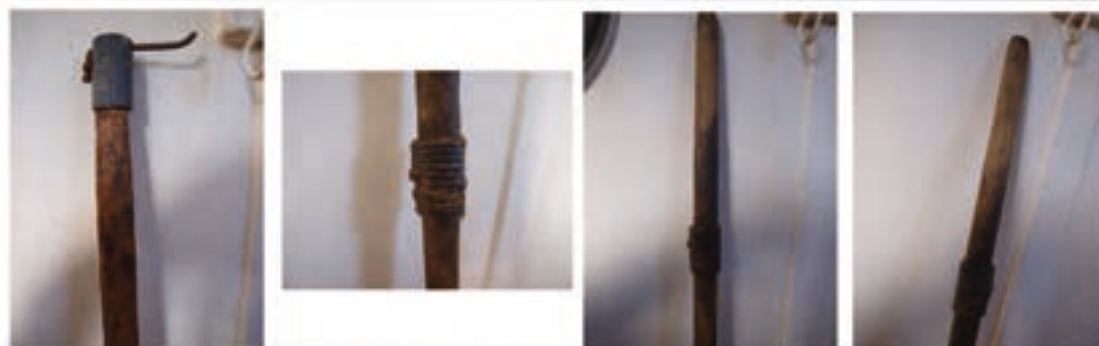
Location Tower: Third floor



- 97** **Maker** 04. Keepers' Equipment
Object Big Rope
Medium Sisal or hemp ?
Size cms approx. 30 metres length
Condition good **Location** Tower: Third floor
Notes This was the original safety rope to lower oneself down from the top of the tower. (Picture 4 shows setting. RC 2005)
2013
021



- 98** **Maker** Light keepers **04. Keepers' Equipment**
Object Pole
Medium Wood with nail
Size cms 1.54 metres length Nail 8 cm
Condition Old **Location** Tower: Third floor
Notes This pole was used by the light keepers - It was certainly devised in a inventive and makeshift way with the old nail but was an essential tool for adjusting the curtains.
2013
022



- 99** **Maker** 04. Keepers' Equipment
Object Shell oil tin
Medium Metal
Size cms 16.7 x 16 diam
Condition Good body, lid rusted **Location** Tower: Third floor
Notes
2013
023



- 100** **Maker** 04. Keepers' Equipment
Object Caltex oil tin
Medium Metal
Size cms 17 x 16 diam
Condition Fair **Location** Tower: Third floor
Notes
2013
024



101 Maker
 Object Castrol grease tin
 Medium Metal
 Size cms 9.5 x 10 diam
 Condition fair
 Notes
 2013
 025

04. Keepers' Equipment

Location Tower: Third floor



102 Maker
 Object Oil can
 Medium Metal
 Size cms 15 x 9.5 diam 20 with handle and tubular spout
 Condition Fair
 Notes Inscribed 'Maat' on body
 2013
 026

04. Keepers' Equipment

Location Tower: Third floor



103 Maker
 Object Oil can
 Medium
 Size cms 15 x 9.5 diam 20 with handle and backward tubular spout
 Condition Fair
 Notes Tape label unreadable, on body
 2013
 027

04. Keepers' Equipment

Location Tower: Third floor



104 Maker Stoptime
 Object Stop watch
 Medium Steel case
 Size cms 5 x 7 x 1.2
 Condition Fair
 Notes For ensuring timing of mechanism correct
 2013
 028

04. Keepers' Equipment

Location Tower: Third floor



- 105** **Maker** USA **04. Keepers' Equipment**
Object Gloves pr.
Medium Rayon with Cotton liner
Size cms 27 cm 19 width to thumb approx.
Condition Good **Location** Tower: Third floor
Notes Made in USA labelled: 100% Rayon outer 100% cotton lining.
2013
030



- 106** **Maker** **04. Keepers' Equipment**
Object Gloves pr. (yellow)
Medium
Size cms 28 cm 18 width to thumb approx.
Condition Good **Location** Tower: Third floor
Notes Made in USA labelled: 100% Rayon outer 100% cotton lining.
2013
031



- 107** **Maker** **04. Keepers' Equipment**
Object Gloves pr. (long wrist)
Medium
Size cms 44 cm 17.2 width to thumb approx. each
Condition Good **Location** Tower: Third floor
Notes Dated 4/64 ? D.S.T. (keeper's initials?)
2013
032



- 108** **Maker** **04. Keepers' Equipment**
Object Paint brush with sawn handle (3")
Medium
Size cms 14 cm long 8 width
Condition Good **Location** Tower: Third floor
Notes initials: This has a carefully trimmed handle for a special purpose - perhaps for allowing it to reach a particular part of mechanism for cleaning.
2013
033



- 109** **Maker** 04. Keepers' Equipment
Object Safety sign on door
Medium
Size cms 29.8 x 22.3 w
Condition Good **Location** Tower: Third floor
Notes
 2013
 034



- 110** **Maker** Light keepers 04. Keepers' Equipment
Object Table 1 for wind vane
Medium Recycled timer (from workshop)
Size cms 61.3 cms high x 93.4 length width overall x 58 depth
Condition Fair **Location** Tower, second floor
Notes Probably made in station workshop out of available timber and shaped for the tower - showing necessary re-use of materials.
 2013
 038



- 111** **Maker** Gary Miller 04. Keepers' Equipment
Object Table
Medium Painted recycled timer (from workshop)
Size cms 53.5 cms high x 67.5 length x 49.5 depth
Condition Good **Location** Tower, second floor
Notes The motor is extremely heavy. The table has been moved back to Q1
 2013
 EDIT
 2017
 039



- 112** **Maker** 04. Keepers' Equipment
Object Metal cog with Allan key stuck in it
Medium Metal core part coated with bitumen
Size cms 7 cm length x 3.5 diam at end 4.7 diam at centre
Condition Fair **Location** Tower, second floor
Notes Check JC
 2013
 040



- 113** **Maker** 04. Keepers' Equipment
Object Rod 1
Medium iron with copper? adjustable joiner
Size cms 130 x
Condition Location Tower, second floor
Notes These are sure to have a specific purpose for the adjustment of some
2013 light equipment - curtains?
041



- 114** **Maker** 04. Keepers' Equipment
Object Rod 2 with threaded end
Medium iron
Size cms 60.7
Condition Location Tower, second floor
Notes These are sure to have a specific purpose for the adjustment of some
2013 light equipment - curtains?
042



- 115** **Maker** Tilley 04. Keepers' Equipment
Object Tilley lamp
Medium Aluminium and brass base to tank?
Size cms 52 cm with handle 16.8 diam of tank 19 approx. overall
Condition Good Location Tower, First floor
Notes Inscribed manufactured in the United Kingdom
2013 With mantle. "Maatsuyker Emergency lamp 1969" inscribed on base
044



- 116** **Maker** Tilley 04. Keepers' Equipment
Object Tilley lamp
Medium Aluminium and brass base to tank?
Size cms 51 cm with handle 16.8 diam of tank 19 approx. overall
Condition Good Location Tower, First floor
Notes Inscription on glass, manufactured in the United Kingdom
2013 No mantle DST QJ 100 1971
045



- 117** **Maker** Aladdin **04. Keepers' Equipment**
Object Aladdin Lamp
Medium Aluminium
Size cms 48.5 x 16.4 diam of base 20.4 across overall
Condition Good **Location** Tower, First floor
Notes Inscribed with makers name
2013
046



- 118** **Maker** Chance Brothers **04. Keepers' Equipment**
Object Ladder
Medium Iron, with grey enamel paint
Size cms 217.00 x 32.3 3.7 depth of
Condition This could have been heavily weathered - **Location** Tower, First floor
Notes This ladder has been noticed by other lighthouse experts as being part of the original Chance brothers Equipment
2013
047



- 119** **Maker** Keepers? **04. Keepers' Equipment**
Object Ladder
Medium Wood, with black paint
Size cms 200 x 33 at base 28.5 at top: Top section 53 x 14 cms x 2.5 cm
Condition Fair, repainted **Location** Tower, First floor
Notes
2013
048



- 120** **Maker** Department of Transport and **04. Keepers' Equipment**
Object Lighthouse visitors book **1988**
Medium Sheets from Older book within plastic covered folder
Size cms Cover height 31.8 x 25.5 x 2.5 approx: Page 29.6 x 20.5.
Condition Fair **Location** Tower, First floor
Notes This is an extremely important record and should be fully scanned.
2013 Task for further work on this project
057



- 121** **Maker** Lightkeepers **04. Keepers' Equipment**
Object White cupboard with shaped top to fit tower room
Medium White painted ply
Size cms 96 x 121 max. 41 at widest part; 30.5 at each end.
Condition **Location** Tower, First floor
Notes
 2013
 058



- 122** **Maker** **04. Keepers' Equipment**
Object Emergency sling
Medium Plastic aluminium and rope
Size cms 216.5 x 61.5 x 19
Condition Good **Location** Tower, Ground floor
Notes Out dated
 2013
 060



- 123** **Maker** **04. Keepers' Equipment**
Object Signal Flag cabinet
Medium Plywood with canisters for each signal flag
Size cms 155.5 x 102.0 x 35.25 ; each container 34.5 long x 15.7 diam
Condition Good but all flags missing **Location** Tower, Ground floor
Notes 40 compartments; no signal flags.
 2013
 061



- 124** **Maker** Chance Brothers? (Perhaps part of the kit **04. Keepers' Equipment**
Object Wooden Whistle **1890s**
Medium Wood (ebony?) exotic timber
Size cms 6.0 whistle length 1. diam of mouth piece 2.8 at top end. 13.5 chain
Condition Fair **Location** Museum Room Q 1
Notes This is one of the most significant objects from the original fit out of the tower. It was in a tube in the tower and was used to alert other keepers in the dwellings.
 2013
 146



125 Maker 04. Keepers' Equipment

Object Pr. of Semaphore flags
 Medium nylon and wood
 Size cms 38 x 39.7 Flag 61 cms handle each
 Condition Poor with some rust stains and dirt Location Museum Room Q 1
 Notes Used at the haulage way or in the lighthouse
 2013
 152

**126** Maker Ampol 04. Keepers' Equipment

Object Oil can Ampol Copr cote
 Medium Can with paper label
 Size cms 10.2 x 10 diam
 Condition Fair condition Location Museum Room Q 1
 Notes
 2013
 153

**127** Maker Ampol 04. Keepers' Equipment

Object Oil can Ampol (Jet Lube)
 Medium Can with paper label
 Size cms 8.5 x 9.2 diam
 Condition Fair condition Location Museum Room Q 1
 Notes
 2013
 154

**128** Maker 04. Keepers' Equipment

Object 1 small object with centre shaft Roller?
 Medium Composite
 Size cms 9 cms x 42.8 diam
 Condition Fair Location Museum Room Q 1
 Notes Unknown object
 2013
 175



- 129** Maker 04. Keepers' Equipment
 Object Big MAAT paint bucket
 Medium Galvanised iron
 Size cms 34.7 cms 33.7 diam at rim (varies)
 Condition Location Museum Room Q 1
 Notes Handle repaired with blue coated electric wire
 2013
 195



- 130** Maker 04. Keepers' Equipment
 Object Australian Flag
 Medium Fabric
 Size cms 130 x 250
 Condition Worn, three stars worn off Location Museum Room Q 1
 Notes
 2013
 202



- 131** Maker 04. Keepers' Equipment
 Object Lighthouse Ladder
 Medium Wood, painted
 Size cms 317 x bottom width 36 30 at top 5.5 variable
 Condition Fair Location Museum Room Q 1
 Notes This ladder was used for maintenance on the tower -note hooks
 2013
 203



- 132** Maker 04. Keepers' Equipment
 Object Paint tray ?
 Medium Metal and various media
 Size cms 15.5 x 46.5 x 24.5
 Condition Poor probably found in bush near Location Museum Room Q 1
 Notes With old newspaper and glass fragments from the tower in it.
 2013
 251



133 **Maker** Arlec
Object Arlec swivel torch
Medium Plastic and metal
Size cms 13 length over-all
Condition Fair
Notes
 2013
 254

04. Keepers' Equipment

Location Museum Room Q 1



134 **Maker** Ever Ready
Object Ever Ready torch
Medium Plastic and metal
Size cms 26 length over-all
Condition Fair
Notes
 2013
 255

04. Keepers' Equipment

Location Museum Room Q 1



135 **Maker**
Object Two petrol cans, two stroke and four stroke
Medium Metal with red paint and paper labels
Size cms 19. cms height 17.7 diam
Condition Fair
Notes
 2013
 282

04. Keepers' Equipment

Location Q 1 outside Museum



136 **Maker** Protectoseal Co. Chicago
Object Safety can
Medium Red painted can
Size cms 30 cms full height x 19 x 12
Condition
Notes Protectoseal / co / Chicago (oval)
 No 245 embossed over makers name
 2013
 283

04. Keepers' Equipment

Location Q 1 outside Museum



137 Maker Protectoseal co. Pratt / Australia
 Object Safety can
 Medium Red painted can
 Size cms 36.5 full height diam 30.5
 Condition
 Notes
 2013
 284

04. Keepers' Equipment

Location Q 1 outside Museum



138 Maker Protectoseal co. Pratt / Australia
 Object Safety can
 Medium Red painted can with yellow labels
 Size cms 33 full height diam 25
 Condition
 Notes
 2013
 285

04. Keepers' Equipment

Location Q 1 outside Museum



139 Maker Protectoseal / Chicago
 Object Safety can
 Medium Red painted can
 Size cms 51 full height 35 x 15.5 cm oval
 Condition
 Notes B8455
 2013
 286

04. Keepers' Equipment

Location Q 1 outside Museum



140 Maker CLS
 Object Pad lock and key
 Medium Brass
 Size cms 6 x 5 x 1.00 approx Key 6 with 6.5 cross bar
 Condition Good
 Notes
 2013
 306

04. Keepers' Equipment

1940

Location Whim shed, Red Shed,
 These locks are on the Whim shed, Red shed, PMG Communications
 box, and the old Whim shed. They are most unusual and old.

- 141** **Maker** Keepers **04. Keepers' Equipment**
Object Roller for helipad (home made)
Medium Concrete and pipes
Size cms 40 approx. Diam. of roller, 80 cm. approx. length of handle.
Condition Fair **Location** Beside helipad
Notes This is a lovely example of inventiveness - how to make a garden roller on the island.
2013
416



- 142** **Maker** Rega brand **04. Keepers' Equipment**
Object Knapsack Sprayer **1890s?**
Medium Plastic and synthetic webbing and straps, brass hand pump, steel
Size cms 13 cms high 6.5 diam
Condition Fair still operational **Location** Museum
Notes Ailsa picture 649-052
2017
714 Taken out of use 2017 from BOM shed. For more info Jeremy Hood PWS Huonville



- 143** **Maker** **04. Keepers' Equipment**
Object Box for Radio Phones **1890s?**
Medium Timber frame at ends, Cardboard cladding, Plastic handles, foam lining
Size cms Length 41.5 cm width 32 cm Height 22 cm
Condition Good / Fair **Location** Museum
Notes Ailsa picture 649-052
2017
716 To Museum 2016/17



- 144** **Maker** **04. Keepers' Equipment**
Object Q1 HF Radio, Antenna **1890s?**
Medium Antenna
Size cms Length 105.5 cm (including mounting bracket) Cable 160cm long
Condition Good / Fair **Location** Museum
Notes Ailsa picture 658
2017
717 Radio decommissioned after damaged by lightening strike, August 2015



- 145** **Maker** 04. Keepers' Equipment
Object Q1 HF Radio Marine transceiver Type 6801 Mk 2B **1890s?**
Medium Blue mental case
Size cms Length box 11cm 33.5 cm width, 29.5.5 high
Condition Good / Fair **Location** Museum
Notes Ailsa picture 659
2017 To Museum 2016/17
718 Radio decommissioned after damaged by lightening strike, August 2015



- 146** **Maker** 04. Keepers' Equipment
Object Q1 HF Radion, Antenna tuner CODAN 7208 Mk 2B **1890s?**
Medium Grey mental
Size cms Length box 20.5 cm 16cm deep
Condition Good / Fair **Location** Museum
Notes Ailsa picture 660
2017 To Museum 2016/17
719 Radio decommissioned after damaged by lightening strike, August 2015



- 147** **Maker** 04. Keepers' Equipment
Object Table **1890s?**
Medium Oak
Size cms Top; 150 x 90 cms 78 high
Condition Good / Fair, used as work table and **Location** Q 1 Workshop
Notes Ailsa picture 660
2017
720



- 148** **Maker** Pyrex (Tilley) **05. Lantern Equipment**
Object Two glass lantern shades
Medium Clear glass with printing
Size cms 38 as in photo each arm 24 overall length Each cup: 13.3 depth 7.00
Condition Good **Location** Museum Room Q 1
Notes
2013
213



- 149** **Maker** Sievert **05. Lantern Equipment**
Object Swedish Kerosine Lantern lighter
Medium Brass with other metal handle
Size cms 19.5 as in photo 26 app overall length depth diam of tank 9.00
Condition Fair **Location** Museum Room Q 1
Notes 10148 patent NO ? As seen being used by John Cook in his photographs.
2013
214



- 150** **Maker** Tilley? **05. Lantern Equipment**
Object New lantern wicks with instructions
Medium Paper plastic and cloth
Size cms As in photo
Condition Good **Location** Museum Room Q 1
Notes
2013
215



- 151** **Maker** Tilley & Aladdin **05. Lantern Equipment**
Object New lantern mantles
Medium Paper wrapping and silk mantles
Size cms As in photo
Condition **Location** Museum Room Q 1
Notes
2013
216



- 152** **Maker** **05. Lantern Equipment**
Object Box for Tilley vaporiser
Medium Cardboard box
Size cms 15 cms long 1.6 x 1.6
Condition **Location** Museum Room Q 1
Notes
2013
217



- 153** **Maker** 05. Lantern Equipment
Object Spare glass pipette
Medium Newspaper wrappings and glass
Size cms See photo
Condition Location Museum Room Q 1
Notes
 2013
 220



- 154** **Maker** Tilley 05. Lantern Equipment
Object Two Lamp parts Small one marked Tilley
Medium Brass and metal
Size cms Larger 9.7 h x 6.2 full depth(3.7 base diam) Smaller 4.3 x 4.9
Condition Damaged Location Museum Room Q 1
Notes
 2013
 221



- 155** **Maker** Tilley? 05. Lantern Equipment
Object Two brass and mesh strainers? Name please!
Medium Brass & wire mesh
Size cms 1.0 x 7.5 diam
Condition Good Location Museum Room Q 1
Notes These are part of the lantern - and can be seen being put in place in a documentary of Maatsuyker made in 1940s.
 2013
 222



- 156** **Maker** Tilley? 05. Lantern Equipment
Object One brass strainer with pressed convex mesh strainer
Medium Brass & Mesh
Size cms 2.9 full depth 1.7 depth of ring x 7.1 diam
Condition Fair Location Museum Room Q 1
Notes These are part of the lantern - and can be seen being put in place in a documentary of Maatsuyker made in 1940s.
 2013
 223



- 157** Maker Tilley?
 Object Three armed Lamp burner
 Medium Brass
 Size cms 10.5 h x 6.8 approx overall each arm 3.00 from base
 Condition Fair
 Notes Part of large lamp from lantern?
 2013
 224

05. Lantern Equipment



- 158** Maker Tilley?
 Object Part of lamp pump?
 Medium Brass
 Size cms 13.2 length x 0.9 diam 1.6 diam of nut
 Condition Fair
 Notes
 2013
 225

05. Lantern Equipment



- 159** Maker Tilley?
 Object Part of lamp pump?
 Medium Corroded metal
 Size cms 8.7 high x 7.5 diam
 Condition Poor
 Notes Part of large lamp from lantern ?
 2013
 226 This looks like it may have been found outside - perhaps discarded.
 Possibly found on track behind tower?

05. Lantern Equipment



- 160** Maker
 Object Measure?
 Medium Brass
 Size cms 1.8 cm wide x 12.0 length
 Condition Fair
 Notes 85A on end
 2013
 227

05. Lantern Equipment



161 Maker
 Object Small box of valves (for lamp?)
 Medium Brass
 Size cms See photo
 Condition Good
 Notes Some look unused
 2013
 228

05. Lantern Equipment

Location Museum Room Q 1



162 Maker
 Object Small box and plastic bag of washers
 Medium Various
 Size cms See photo
 Condition Mixed
 Notes
 2013
 229

05. Lantern Equipment

Location Museum Room Q 1



163 Maker
 Object 4 convex washers
 Medium Composite material
 Size cms See photo
 Condition Mixed
 Notes
 2013
 230

05. Lantern Equipment

Location Museum Room Q 1



164 Maker
 Object 4 small valves
 Medium 3 brass, 1 Composite material
 Size cms See photo
 Condition Mixed
 Notes
 2013
 231

05. Lantern Equipment

Location Museum Room Q 1



165 Maker
 Object 1 cog
 Medium Metal
 Size cms 6.0 diam See photo
 Condition Fair, rusted
 Notes
 2013
 232

05. Lantern Equipment

Location Museum Room Q 1



166 Maker
 Object 1 rusted metal washer
 Medium Metal
 Size cms 4.5 diam See photo
 Condition Poor
 Notes
 2013
 233

05. Lantern Equipment

Location Museum Room Q 1



167 Maker
 Object Brass cog with six sided nut?
 Medium Brass
 Size cms 4 height 4.0 diam
 Condition Good
 Notes
 2013
 234

05. Lantern Equipment

Location Museum Room Q 1



168 Maker
 Object One cleaning brush for machinery with wire bristles
 Medium Wire
 Size cms 35.0 long
 Condition Fair
 Notes
 2013
 240

05. Lantern Equipment

Location Museum Room Q 1



169 **Maker**
Object One liquid measure
Medium Metal
Size cms 26.8 long
Condition Fair
Notes
 2013
 241

05. Lantern Equipment

Location Museum Room Q 1



170 **Maker**
Object Fuse Box
Medium Various media
Size cms 50 x 35.5 x 17.5
Condition Fair
Notes
 2013
 EDIT
 2017
 019

06. Electrical Equipment

Location Tower: Third floor

Fuse box for later electronic working in tower
 All destroyed in lightening strike 2015



171 **Maker** Brook Crompton Parkinson Compact ?
Object Electric Motor
Medium Cast iron
Size cms 58 cms long approx x 30.8 height 30 approx wide
Condition Corroded and paint cracking and
Notes
 2013
 036

06. Electrical Equipment

Location Tower, second floor

Label: This motor was installed on top of the clockwork mechanism and used to turn the lens from 1976-1996 when it was decommissioned.



172 **Maker** Hallam Magnetics Pty Ltd
Object Power transformer box in red Metal Box
Medium Metal box painted dark red
Size cms 30.5 cms x width 30.7 (35.7 with handles) 25.5 depth
Condition Outside deteriorated
Notes
 2013
 037

06. Electrical Equipment

Location Tower, second floor

Bracket for Power transformer box Metal Box, Iron painted white :36. cms high x 38.0 width overall x 31 depth. Pict 4 JC from 1970s
 All destroyed in lightening strike 2015; Removed 3 2017 see below



- 173** **Maker** Hallam Magnetics Pty Ltd **06. Electrical Equipment**
Object Fuse Box as removed from wall 2017
Medium Now burnt out completely
Size cms
Condition **Location** Tower
Notes See record 2013 / 037 Electrical Equipment in tower for how this
2017 looked before the 2016 Lightening strike
037 Ailsa Photo P1010184



- 174** **Maker** Solarex **06. Electrical Equipment**
Object Solar panel Solarex
Medium Solar cells with electric wire
Size cms 55 x 55 h 2.5 depth
Condition Fair **Location** Museum Room Q 1
Notes One of the original solar panels from the island.
2013
145



- 175** **Maker** **06. Electrical Equipment**
Object 1 ceramic insulator from a fuse box
Medium White glazed ceramic
Size cms 4.6 cms x 4 x 4.5 cm
Condition **Location** Museum Room Q 1
Notes
2013
174



- 176** **Maker** **06. Electrical Equipment**
Object Plastic Cover for fuse ?
Medium Grey plastic
Size cms Height 10.5 x 12 square approx
Condition Fair condition **Location** Museum Room Q 1
Notes
2013
181



- 177** Maker 06. Electrical Equipment
 Object Switch Box
 Medium Grey painted metal MAAT written on base
 Size cms 16.7 square 10.2 depth approx
 Condition Fair condition Location Museum Room Q 1
 Notes
 2013
 182



- 178** Maker 06. Electrical Equipment
 Object Box of old style light globes (12)
 Medium Glass and wire etc.
 Size cms Various sizes see photo
 Condition Good Location Museum Room Q 1
 Notes These should be detailed and checked for era and value.
 2013
 253



- 179** Maker 06. Electrical Equipment
 Object Old Batteries 1960s?
 Medium
 Size cms
 Condition Good Location Battery charging station
 Notes These were in use in 2005 - up until ? when the new system with solar panels was put in
 2013
 408



- 180** Maker 06. Electrical Equipment
 Object Signs at door to Battery charging station 1960s?
 Medium
 Size cms
 Condition Good Location Battery charging station
 Notes These were in use in 2005 - up until ? when the new system with solar panels was put in
 2013
 409



- 181** **Maker** 07. Communications
Object Telephone **1950s**
Medium Bakelite
Size cms 23 x 15.5 mouthpiece 23 x 10
Condition Good **Location** Tower: Third floor
Notes There are phones of this style and period in all the Island's buildings.
 This one in the tower destroyed in the Lightening strike
 2013
 EDIT
 2017
 003



- 182** **Maker** 07. Communications
Object Telephone on wall bracket
Medium Bakelite on white painted wood wall bracket
Size cms 16.00 height overall, 15.2 width at base 18.5 depth 23.7 approx.
Condition Fair **Location** Tower, First floor
Notes Labelled : C Of A 225 221: The stand for the phone would have been made up by the Keepers.
 2013
 049



- 183** **Maker** 07. Communications
Object 3 ceramic Insulators
Medium Ceramic
Size cms 9 x 6 cm diam at base
Condition Fair, one part missing **Location** Museum Room Q 1
Notes Possibly from old telephone wires throughout Island
 2013
 170



- 184** **Maker** 07. Communications
Object 2 ceramic Insulators with metal fittings & third matching
Medium Ceramic
Size cms 14 cms x 10.5 cm diam at base 5.5 top diam: arm approx 25 cms
Condition Fair, metal pins in reasonable condition **Location** Museum Room Q 1
Notes Possibly from old telephone wires throughout Island
 2013
 171



- 185** **Maker** 07. Communications
Object 2 ceramic Insulators one with metal fitting
Medium ceramic
Size cms 8.5 cms x 8.2 cm diam at base 3.8 top diam: arm approx 15 cms long
Condition Fair, metal pin in reasonable condition **Location** Museum Room Q 1
Notes Possibly from old telephone wires throughout Island
2013
172



- 186** **Maker** 07. Communications
Object 1 ceramic insulator
Medium Brown highly glazed ceramic
Size cms 6 cms x 7 cm diam at top
Condition Good **Location** Museum Room Q 1
Notes
2013
173



- 187** **Maker** 07. Communications
Object Walkie talkie radio set with cover
Medium Leather cover and radio set
Size cms Height closed 29.5 x 23 (includes side pocket) x 11.5
Condition Fair condition **Location** Museum Room Q 1
Notes
2013
180



- 188** **Maker** 07. Communications
Object Telephone
Medium Bakelite
Size cms 23.2 h base x 15.8 w 11.23 cm 10.2 Length of receiver
Condition Fair, dusty **Location** Museum Room Q 1
Notes
2013
183



- 189** **Maker** 07. Communications
Object Telecom phone (80s)
Medium Brown Plastic
Size cms 16 h base x 20 w x 7.8 d cm Length of receiver 22
Condition Good **Location** Museum Room Q 1
Notes
 2013
 184



- 190** **Maker** 07. Communications
Object Telecom phone (80s)
Medium Beige
Size cms 16 h base x 20 w x 7.8 d cm Length of receiver 22
Condition Good **Location** Museum Room Q 1
Notes
 2013
 185



- 191** **Maker** 07. Communications
Object AMSA Telephone Directory
Medium Plastic cover with loose leaf inside pages
Size cms 23.7 h base x 20.4 w x 4.2
Condition Good **Location** Museum Room Q 1
Notes
 2013
 186



- 192** **Maker** Aldis 07. Communications
Object ALDIS Long range signalling lamp MK10
Medium Wooden box with dove tailed corners
Size cms 23 h x 38. 6 20.9 Box am handle Head 22.8 , diam 2.4
Condition Fair **Location** Museum Room Q 1
Notes With jump leads quite (70s) in separate box
 Spare light globe in cardboard packaging
 2013
 189



- 193** **Maker** 07. Communications
Object RAAF portable long range signalling lamp(earlier - above)
Medium Wooden ply box
Size cms 23 h x 38. 6 20.9 Box am handle Head 22.8 , diam 2.4
Condition Fair **Location** Museum Room Q 1
Notes 1941(With leads)
 2013
 190



- 194** **Maker** 07. Communications
Object Long Distance signalling lantern with long electric cord
Medium Lamp (no box)
Size cms 28 cms 29 diam of lantern 16 of lantern
Condition Fair **Location** Museum Room Q 1
Notes
 2013
 191



- 195** **Maker** Ekco 07. Communications
Object Spare light light globe for Aldis lamp record 189
Medium Cardboard wrappings and glass globe
Size cms See photo
Condition Fair **Location** Museum Room Q 1
Notes Ekco bulb also shown in record 218. As a projector lamp it was probably used for a signalling lamp.
 2013
 219



- 196** **Maker** Mitralux 07. Communications
Object Mitralux L140 signalling torch
Medium Plastic and metal
Size cms 22.2 height 20.5 length overall 22.2 maximum width
Condition Fair **Location** Museum Room Q 1
Notes
 2013
 256



- 197** **Maker** 07. Communications
Object Bakelite phone on wall stand, with battery box below
Medium Bakelite and wood and batteries
Size cms Panel 85 x 27 x 2.2
Condition Good **Location** Q 1
Notes Good to still have the batteries in position.
 2013
 277



- 198** **Maker** 07. Communications
Object Box for early telephone communications on Island
Medium Metal
Size cms Box 38.5 x 23 x 13.4 - pole approx 120.
Condition Fair **Location** Track: top side, just
Notes These yellow boxes appear on the track - this in photograph is on the top side of the road just before the Olympic pool.
 2013
 EDIT
 2017
 296



- 199** **Maker** PMG 07. Communications
Object PMG Telephone wire box
Medium Concrete metal
Size cms
Condition Fair **Location** Track: near tardis
Notes These followed the yellow boxes.
 2013
 300



- 200** **Maker** PMG 07. Communications
Object PMG Communications Box (known as the Tardis)
Medium Concrete base and moulded fibreglass
Size cms 242 height near door, total width 180
Condition Fair **Location** Track: Tardis
Notes Installed to bring TV and phone to the Keepers. Stories are: the TV never worked properly in the quarters but was watched in the back of the truck near this building.
 2013
 301



- 201** **Maker** PMG **07. Communications**
Object PMG Communications Box (known as the Tardis)
Medium Concrete base and moulded fibreglass
Size cms 242 height near door, total width 180
Condition Fair no much deterioration over **Location** Track: Tardis
Notes New photos by Ailsa 2017 P1010152, 53
2017
301



- 202** **Maker** **07. Communications**
Object Telephone bell box **1950s?**
Medium Metal, painted grey
Size cms 17 x 17 x 10
Condition Good **Location** Q 2 Passageway Left of
Notes
2013
341



- 203** **Maker** **07. Communications**
Object Telephone **1950s?**
Medium Bakelite
Size cms Base plate 56.3 x 27, Battery box 20 x 18 x 8.7
Condition Good **Location** Q 2 Passageway
Notes Label below cradle / C. of A. / D.O.T. 225223
2013
342



- 204** **Maker** **07. Communications**
Object Phone **1950s?**
Medium Bakelite on fibreboard base plate
Size cms Base plate: 55.5 x 27; Box 20 x 17.5 x 8.8
Condition Good **Location** Q 3 Hallway
Notes The cords on this phone seem older than others on the Island. Perhaps Q3 was not being used when the other phones on the Island were last updated.
2013
348



- 205** Maker 07. Communications
 Object Insulator
 Medium Ceramic & steel bracket
 Size cms Length 29 x width 11.5 (Insulator 13.5cm)
 Condition Steel very corroded ceramic good Location Museum Room Q 1
 Notes Ailsa picture 576, 577
 2017 Found below Q2 1- 113/16
 694



- 206** Maker 08. Generator equipment
 Object Part of Generator?
 Medium Iron painted green
 Size cms See photo
 Condition Fair Location Museum Room Q 1
 Notes
 2013
 243



- 207** Maker 08. Generator equipment
 Object Part of Generator?
 Medium Iron painted green
 Size cms See photo 6.4 length 5.2 diam
 Condition Fair Location Museum Room Q 1
 Notes Marked 201 / 1110
 2013
 244



- 208** Maker 08. Generator equipment
 Object 2 base brackets for machinery or fuel tanks
 Medium Iron
 Size cms 8 x 13.8 (plate) 14 depth
 Condition Rusted Location Museum Room Q 1
 Notes
 2013
 250



- 209** **Maker** Lister **08. Generator equipment**
Object Generator 1
Medium
Size cms 134 x 250 (platform) x 90 high from platform.
Condition **Location** Generator Shed
Notes
2013
289



- 210** **Maker** Lister **08. Generator equipment**
Object Generator 2
Medium
Size cms 134 x 250 (platform) x 90 high from platform.
Condition **Location** Generator Shed
Notes
2013
290



- 211** **Maker** Lister **08. Generator equipment**
Object Another example to be detailed from Generator shed
Medium
Size cms
Condition **Location** Generator Shed
Notes
2013
291



- 212** **Maker** **09. Haulage**
Object Nail (from haulage?)
Medium
Size cms 19 x 1.1 cm square shaft, 2.0 sq. head
Condition Fair condition **Location** Museum Room Q 1
Notes
2013
155



- 213** **Maker**
- Object** Insulator
- Medium** Brown Glass
- Size cms** 23 overall insulator 10 x 7 cm diam at base
- Condition** [Location](#) Museum Room Q 1
- Notes** Found near haulage way near the gulch
- 2013**
- 168**

09. Haulage



- 214** **Maker**
- Object** Insulator
- Medium** Clear Glass with rusted pin
- Size cms** 23 overall insulator 10 x 7 cm diam at base
- Condition** Glass discoloured and rusted pin [Location](#) Museum Room Q 1
- Notes**
- 2013**
- 169**

09. Haulage



- 215** **Maker**
- Object** Collection of old bolts
- Medium** Iron
- Size cms** Various, up to 30 cms in length
- Condition** Rusted [Location](#) Red Shed
- Notes** Possibly from haulage?
- 2013**
- 303**

09. Haulage
1890s?

- 216** **Maker**
- Object** Trolley
- Medium** Wood and iron
- Size cms** 1.68 x 85.0 (without hook) x 21 (Very heavy)
- Condition** Fair [Location](#) Whim shed
- Notes** This is the base of the trolley for the haulage. There are photos of this as it was in the John Cook Archive.
- 2013**
- 308**

09. Haulage
1940

- 217** Maker
 Object Rollers 9 straight sided
 Medium Metal
 Size cms 38.00(without pin, Pin: 4.00) Diam 11.5 shaped
 Condition Fair Location Whim shed
 Notes These rollers have been collected from the original haulage tracks
 Photo 4 from Ailsa 2017
 2013
 EDIT
 2017
 309

09. Haulage
1940

- 218** Maker
 Object Rollers 5 concave
 Medium Metal, Aluminium? shell
 Size cms 38.00 (without pin, Pin: 4.00) Diam 12.5
 Condition Fair Location Whim shed
 Notes These rollers have been collected from the original haulage tracks
 2013
 310

09. Haulage
1940

- 219** Maker
 Object Rollers 3 wooden
 Medium Wooden with metal core
 Size cms 46.00 length (without pin, Pin: 4.00) Diam 13 (varies) pin 4.00
 Condition Poor Location Whim shed
 Notes The wooden rollers would have predated the metal ones? These rollers have been collected from the original haulage tracks.
 Photo 4 is from Ailsa 2017 No. P1000308
 2013
 EDIT
 2017
 311

09. Haulage
1900 ?

- 220** Maker
 Object Rollers 3 smaller wooden
 Medium Wooden with metal core
 Size cms 21.00 length (without pin, Pin: 4.50 varies) Diam 14.5
 Condition Poor Location Whim shed
 Notes The wooden rollers would have predated the metal ones? These rollers have been collected from the original haulage tracks
 2013
 312

09. Haulage
1900 ?

- 221** **Maker** 09. Haulage
Object Rollers 4 cast iron - rusted
Medium Cast iron
Size cms 36.00 length (without pin, Pin: 4.0) Diam 12
Condition Rusted **Location** Whim shed
Notes The wooden rollers would have predated the metal ones? Possibly these iron ones came after the wood . These rollers were collected from the original haulage tracks Additional Photo from Ailsa 1000307, 306
2013
EDIT
2017
313



- 222** **Maker** 09. Haulage
Object 2 Wooden rollers
Medium Cast iron
Size cms 36.00 length (without pin, Pin: 4/5 cms) Diam 12 (14.5 swollen one)
Condition Metal rusted: one swollen with rot **Location** Whim shed
Notes The wooden rollers would have predated the metal ones? one swollen with damp rot.
2013
314 These rollers have been collected from the original haulage tracks



- 223** **Maker** 09. Haulage
Object Gear lever? from old motor
Medium Cast iron, Metal badly rusted but stabiliser has been applied
Size cms 97.00 length, Diam. of large cog: 10.5 x 5 cm thick.
Condition Metal rusted **Location** Whim shed
Notes Uncertain exactly which bit this was.
2013
315



- 224** **Maker** 09. Haulage
Object Yoke for horse which drove the first haulage
Medium Cast iron and wood
Size cms 123 cms full height with wood. Harness from wood: 94 cms.
Condition Metal badly rusted but stabiliser has **Location** Whim shed
Notes There is single picture of the horse harnessed into this apparatus in the historic photographs of Maatsuyker Island as part of the John Cook Book. In all these photos it is shown upside down. The wooden arm is cut.
2013
316



- 225** **Maker** 09. Haulage
Object Sleeper supporting brackets and remains of roller. 1900 ?
Medium Cast iron and wood
Size cms Full length bracket to bracket 63.5 cms
Condition Poor, rusted metal **Location** Whim shed
Notes This must have been brought in from outside - for preservation and easy viewing of a sleeper with roller.
2013
317



- 226** **Maker** 09. Haulage
Object Remnants of rollers 1900 ?
Medium Rusted metal wood etc.
Size cms Various
Condition Poor **Location** Whim shed
Notes Additional photo from Ailsa 2017
2013
EDIT
2017
318



- 227** **Maker** 09. Haulage
Object Unknown tool 1900 ?
Medium Rusted metal and other medium
Size cms 37 cms length overall, shaft: 3.5 diam; head 12 x 12 cms thick
Condition Poor **Location** Whim shed
Notes
2013
319



- 228** **Maker** 09. Haulage
Object Side brace from trolley? 1940s
Medium Rusted metal
Size cms 30 x 5 x 1 cms approx.
Condition Fair **Location** Whim shed
Notes
2013
323



- 229** **Maker**
Object Cable
Medium Steel
Size cms Coil 150 cms diam.
Condition Fair **Location** Whim shed
Notes This is the steel cable from the haulage way.
2013
324

09. Haulage
1960s ?



- 230** **Maker**
Object Part of 2 old electric motors
Medium Metal
Size cms
Condition Fair **Location** Whim shed
Notes The objects on this shelf could be catalogued individually, but we were running out of time
2013
325

09. Haulage
1950s



- 231** **Maker**
Object Shelf with various objects
Medium Various
Size cms
Condition Fair **Location** Whim shed
Notes The objects on this shelf could be catalogued individually, but we were running out of time
2013
326

09. Haulage
1950s



- 232** **Maker**
Object Cover from old engine?
Medium Metal
Size cms
Condition Fair **Location** Whim shed
Notes The objects on this shelf could be catalogued individually, but we were running out of time
2013
327

09. Haulage
1950s



- 233** **Maker** Harman
Object Whim engine No. 1
Medium
Size cms 281 Length x 77 width 124 full height
Condition Fair **Location** Whim shed
Notes
 2013
 328

09. Haulage
 1940s



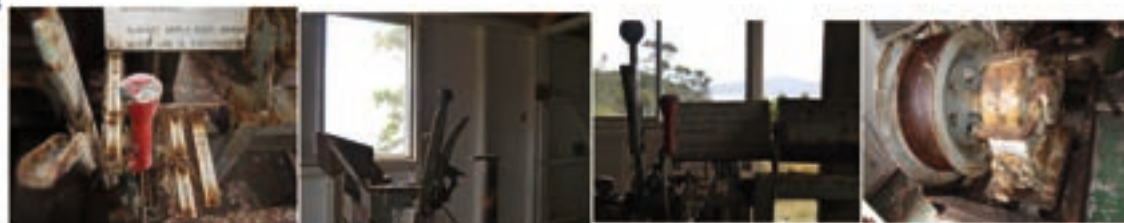
- 234** **Maker**
Object Brace Arch at front of Machine
Medium
Size cms 143 h x 74 width 31 depth full total
Condition Poor **Location** Whim shed
Notes This arch fed the cable to the wheel on the winch.
 2013
 329

09. Haulage
 1940s



- 235** **Maker**
Object Quick winch
Medium
Size cms 165 h overall approx 224 length platform x 109 wide
Condition Poor **Location** Whim shed
Notes It was hard to get a photograph of this as a whole.
 2013
 330

09. Haulage
 1950s



- 236** **Maker**
Object The Whim
Medium
Size cms 147 approx diam
Condition Poor **Location** Whim shed, outside in
Notes The wheel which was operated by horse power for haulage trollies.
 2013
 331

09. Haulage
 1900s



- 237** **Maker** 09. Haulage
Object Haulage way, leaving from Whim area in 2005
Medium
Size cms
Condition Location
Notes These photos were taken in 2005 - but it seemed relevant to include them here to give perspective to the objects in the shed.
2013
421



- 238** **Maker** 09. Haulage
Object Haulage way, Area by old banksia in 2005 & 2013
Medium
Size cms
Condition Location
Notes Photos 1 & 2 - 2005 - .3& 4 show the banksia fallen by 2013
2013
422



- 239** **Maker** 09. Haulage
Object Haulage way, roller near old banksia in 2005
Medium
Size cms
Condition Location
Notes This roller is still in this position 2013, Additional photo Ailsa 2017
2013
EDIT
2017
423



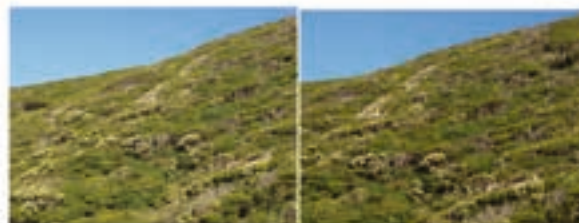
- 240** **Maker** 09. Haulage
Object Haulage way, marker post near old banksia in 2013
Medium
Size cms
Condition Location
Notes Photo 10066 Ailsa 2017 near same spot
424



- 241** **Maker** 09. Haulage
Object Haulage way, the main route as viewed in 2005
Medium
Size cms
Condition Location
Notes These photos were taken in 2005 - . Photo 4 shows the break in the trees beside the old banksia which has since blown down.
2013
425



- 242** **Maker** 09. Haulage
Object Haulage way, the main route as viewed in 2013 from bottom
Medium
Size cms
Condition Location
Notes Photos 1 & 2 2013
426 Photo 3 shows sleepers, looking up haulage in 2005



- 243** **Maker** 09. Haulage
Object Haulage way, the way across the gully in 2005
Medium
Size cms
Condition Location
Notes These photos were taken in 2005 - but it seemed relevant to include them here to give perspective to the objects in the shed.
2013
EDIT
2017
427



- 244** **Maker** 09. Haulage
Object Haulage way, roller near gully in 5005
Medium
Size cms
Condition Location
Notes these photos were taken in 2005 - but it seemed relevant to include them here to give perspective to the objects in the shed. Photo 4 shows the break in the trees beside the old banksia which has since blown down.
2013
428



- 245** **Maker** 09. Haulage
Object Haulage way, spare sleepers by track in 2005
Medium
Size cms
Condition Location
Notes these photos were taken in 2005 - but it seemed relevant to include them here to give perspective to the objects in the shed. Photo 4 shows the break in the trees beside the old banksia which has since been blown down.
2013
429



- 246** **Maker** 09. Haulage
Object Haulage way, details of sleepers and nails 2005
Medium
Size cms
Condition Location
Notes these photos were taken in 2005 - but it seemed relevant to include them here to give perspective to the objects in the shed. Photo 3 shows the break in the trees beside the old banksia which has since been blown down.
430



- 247** **Maker** 09. Haulage
Object Whim Shed
Medium
Size cms
Condition Location End of track top of
Notes
2013
431



- 248** **Maker** 09. Haulage
Object Haulage way, details 2017
Medium
Size cms
Condition Location
Notes Haulage as shown in 422 in 2013
2017
741 Ailsa photo 1010066



249 Maker
 Object Haulage way, details 2017 showing Trees through tracks
 Medium
 Size cms
 Condition
 Notes Ailsa photo 1010067, 68,69, 72
 2017
 742

09. Haulage



250 Maker
 Object Haulage way, details 2017 showing tracks
 Medium
 Size cms
 Condition
 Notes Ailsa photo 1010074, 75, 76, 77
 2017
 743

09. Haulage



251 Maker
 Object Haulage way, details 2017 Roller and tracks
 Medium
 Size cms
 Condition
 Notes Ailsa photo 1010074, 78, 79,80
 2017
 744

09. Haulage



252 Maker
 Object Haulage way, details 2017 sleeper & tracks
 Medium
 Size cms
 Condition
 Notes Ailsa photo 1010081, 82, 85
 2017
 745

09. Haulage



253 Maker
 Object Haulage way, details 2017 Elevated section
 Medium
 Size cms
 Condition Location
 Notes Haulage as shown in 427
 2017 Ailsa Photo 1010083, 84,86, 87
 746

09. Haulage



254 Maker
 Object Haulage way, details 2017 Elevated section
 Medium
 Size cms
 Condition Location
 Notes Haulage as shown in 427
 2017 Ailsa Photo 1010088, 89, 90, 91
 747

09. Haulage



255 Maker
 Object Haulage way, details 2017 corroded rails & rollers
 Medium
 Size cms
 Condition Location
 Notes Ailsa Photo 1010092, 89, 90, 103
 2017
 748

09. Haulage



256 Maker
 Object Haulage way, details 2017 Rollers and sleepers
 Medium
 Size cms
 Condition Location
 Notes Ailsa Photo 1010094, 95, 96, 97
 2017
 749

09. Haulage



257 Maker
 Object Haulage way, details 2017 Frame & sleepers
 Medium
 Size cms
 Condition Location
 Notes Ailsa Photo 1010098, 99, 100, 101
 2017
 750

09. Haulage



258 Maker
 Object Haulage way, details 2017 Elevated section
 Medium
 Size cms
 Condition Location
 Notes Ailsa Photo 1010102, 104, 105, 107
 2017
 750

09. Haulage



259 Maker
 Object Haulage way, details 2017 Tee tree through rails
 Medium
 Size cms
 Condition Location
 Notes Ailsa Photo 1010108, 109, 106
 2017
 751

09. Haulage



260 Maker
 Object Haulage way, details 2017 Metal fixtures
 Medium
 Size cms
 Condition Location
 Notes Ailsa Photo 1010106, 110, 111
 2017
 752

09. Haulage



261 Maker
 Object Haulage way, details 2017 Rollers & rails
 Medium
 Size cms
 Condition Location
 Notes Ailsa Photo 1010112, 114, 115, 116
 2017
 753

09. Haulage



262 Maker
 Object Haulage way, details 2017 Track & volunteers
 Medium
 Size cms
 Condition Location
 Notes Ailsa Photo 1010113,
 2017
 754

09. Haulage



263 Maker
 Object Haulage way, details 2017 Banksia fall
 Medium
 Size cms
 Condition Location
 Notes See record 422, photo 4 for same view in 2013, and tree in 2005.
 Ailsa Photo 1010112, 114, 115, 116
 2017
 755

09. Haulage



264 Maker
 Object Haulage way, details 2017 Looking back up Haulage
 Medium
 Size cms
 Condition Location
 Notes See record 425, photo 4 for same view in 2005.
 Ailsa Photo 1010140, 141,
 2017
 756

09. Haulage



265 Maker 09. Haulage

Object Haulage way, details 2005 Looking back up Haulage

Medium

Size cms

Condition

Notes

2017
757

Location

These photos were taken by Rosanna Cameron in 2005
They make an interesting comparison

266 Maker 10. Meteorological

Object Stevenson Screen

Medium Painted wood with slatted sides, door opens down at front

Size cms 68 h front 65.3 height back 66.3 width 43.00 depth

Condition Fair. More weathered at back with Location Museum Room Q 1

Notes

2013
143

267 Maker 10. Meteorological

Object AMSA Equipment box

Medium Ply wood Equipment box with foam lined inside compartments and

Size cms 22 h x 51.00 x 38 cm

Condition Fair - poor inside Location Museum Room Q 1

Notes

2013
209

Two extra photo details on record 212



268 Maker 10. Meteorological

Object AMSA Equipment box

Medium Ply wood Equipment box with foam inside deteriorated

Size cms 27 h x 48.5.00 x 49.8 cm

Condition Location Museum Room Q 1

Notes

2013
210

- 269** Maker
 Object **AMSA Equipment box Barometer**
 Medium **Ply wood Equipment box with cardboard and foam packaging inserts**
 Size cms **37 h x 49.2.00 x 35.4 cm**
 Condition
 Notes
 2013
 211

10. Meteorological

Location Museum Room Q 1



- 270** Maker
 Object **AMSA Anemometer cups**
 Medium **Metal pale blue cups and three wings**
 Size cms **38 as in photo each arm 24 overall length Each cup: 13.3 depth 7.00**
 Condition **Good**
 Notes
 2013
 212

10. Meteorological

Location Museum Room Q 1

Cups were lost off the anemometer in 2005 - but these look in too good condition to have been in the bushes that long. (two photos from 209)



- 271** Maker
 Object **Anemometer**
 Medium **Galvanised steel**
 Size cms **Cups 13.5 diam cm Full radius 23 cms**
 Condition **damaged and scratched**
 Notes
 2017
 690

10. Meteorological

Location Museum

Ailsa picture 803, 804
 Found December 2013 North of existing Anemometer
 Could be the 2005 ones? Watch of Nick Weetman & Rosanna Cameron



- 272** Maker
 Object **Chamber Pot**
 Medium **Crazed ceramic, cream with pink design**
 Size cms **13.6 cm 23. diam at rim**
 Condition **Damaged repaired - pieces missing**
 Notes
 2013
 099

11. Domestic: objects

Location Museum Room Q 1



- 273** Maker 11. Domestic: objects
 Object 3 shards of green/blue and white pot
 Medium 3 ceramic pieces - two show base
 Size cms 9 cms long from base to rim band approx 5 -7 mm thick
 Condition Damaged repaired - pieces missing Location Museum Room Q 1
 Notes
 2013
 100



- 274** Maker 11. Domestic: objects
 Object 4 shards of blue and white
 Medium 4 ceramic shards
 Size cms see ruler in photo
 Condition Location Museum Room Q 1
 Notes
 2013
 101



- 275** Maker 11. Domestic: objects
 Object Shard of broken white cup
 Medium White china
 Size cms see ruler in photo
 Condition Location Museum Room Q 1
 Notes
 2013
 102



- 276** Maker 11. Domestic: objects
 Object Saucer with violet design
 Medium Melba bone china
 Size cms see ruler in photo
 Condition Location Museum Room Q 1
 Notes
 2013
 103



277 Maker
 Object Base shard from small dish
 Medium White bone china
 Size cms see ruler in photo
 Condition
 Notes
 2013
 104

11. Domestic: objects

Location Museum Room Q 1



278 Maker
 Object small plate
 Medium Aluminium
 Size cms See photo
 Condition
 Notes
 2013
 107

11. Domestic: objects

Location Museum Room Q 1



279 Maker
 Object Piece of old plastic table cloth
 Medium Plastic
 Size cms 36 x 55
 Condition
 Notes
 2013
 108

11. Domestic: objects

Location Museum Room Q 1



280 Maker
 Object Remnant of man's suede shoe
 Medium Leather
 Size cms Approx 17 length & See tape in picture
 Condition
 Notes
 2013
 122

11. Domestic: objects

Location Museum Room Q 1



- 281** **Maker** 11. Domestic: objects
Object Remnant of boot with lace holes
Medium Leather
Size cms Approx 17 length & See tape in picture
Condition Location Museum Room Q 1
Notes
 2013
 123



- 282** **Maker** Zimmer 11. Domestic: objects
Object Arm brace
Medium Metal painted flesh colour
Size cms Height 19.3 length 28 cms
Condition Location Museum Room Q 1
Notes Zimmer Glamorgan GB. see label
 2013
 124



- 283** **Maker** 11. Domestic: objects
Object Book, Care of the sick in the home
Medium Book
Size cms 25 x 18.6
Condition Location Museum Room Q 1
Notes
 2013
 125



- 284** **Maker** 11. Domestic: objects
Object Pamphlet First Aid for snake bite in Australia July 1979
Medium Pamphlet
Size cms 24.5 x 14.8
Condition Location Museum Room Q 1
Notes This would have been sent to Maatsuyker as part of collection of First Aid Products. There are no snakes on Maatsuyker.
 2013
 126



285 **Maker**
Object Decorative model fish
Medium Green plastic
Size cms 21 cms long see photo
Condition
Notes
 2013
 127

11. Domestic: objects

Location Museum Room Q 1



286 **Maker**
Object Wooden stool
Medium Wood, Tas Oak
Size cms 30.2 h 60.8 length 26.9 width
Condition Good
Notes
 2013
 144

11. Domestic: objects

Location Museum Room Q 1



287 **Maker**
Object Tobacco pouch Egbergs Drum
Medium Plastic
Size cms 8 cm x 15.0 long
Condition Poor covered with dirt, contains
Notes
 2013
 150

11. Domestic: objects

Location Museum Room Q 1



288 **Maker**
Object Pr of Hinges
Medium Rusted metal
Size cms 34 cms full length 13.5 each
Condition Very rusted and fragile
Notes From Q1 fence Fence and gate replaced March 2004
 2013
 160

11. Domestic: objects

Location Museum Room Q 1



- 289** Maker
 Object **Cast iron corner piece**
 Medium **rusted metal**
 Size cms **60 height as shown x 140 w**
 Condition **Very rusted but painted with some** Location **Museum Room Q 1**
 Notes
 2013
 161

11. Domestic: objects



- 290** Maker
 Object **Part of cast iron bed head**
 Medium **Rusted metal**
 Size cms **46 cms x 55**
 Condition **Very rusted** Location **Museum Room Q 1**
 Notes
 2013
 162

11. Domestic: objects



- 291** Maker
 Object **Lock with two chrome door knobs**
 Medium
 Size cms **11 cms x 15.5**
 Condition
 Notes
 2013
 163

11. Domestic: objects



- 292** Maker
 Object **Two brass door knobs**
 Medium
 Size cms **4.0 cms x 4.5 diam.**
 Condition
 Notes
 2013
 164

11. Domestic: objects



293 **Maker**
Object Can Opener - Swingaway
Medium
Size cms 27.5 cms x 8.0 max.
Condition
Notes
 2013
 165

11. Domestic: objects

Location Museum Room Q 1



294 **Maker**
Object Bath/sink plug
Medium Brass
Size cms 6.3 diam x 1.0
Condition
Notes
 2013
 166

11. Domestic: objects

Location Museum Room Q 1



295 **Maker** Austral
Object Electric fan
Medium Small Austral brand motor
Size cms 2 5 to top of blades 17 across blades
Condition Rusted blades
Notes
 2013
 167

11. Domestic: objects

Location Museum Room Q 1



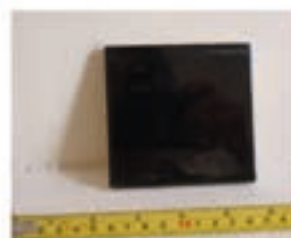
296 **Maker**
Object 4 briquettes plus two fragments
Medium Coal
Size cms 13.5 x 6.5X 5 (as shown by tape)
Condition Fair
Notes
 2013
 176

11. Domestic: objects

Location Museum Room Q 1



- 297** Maker 11. Domestic: objects
 Object 17 black ceramic tiles
 Medium Ceramic with black glaze
 Size cms 10 cm x 10 approx
 Condition Good Location Museum Room Q 1
 Notes A quantity of these have been placed in the cupboard in the Museum room.
 2013
 178



- 298** Maker 11. Domestic: objects
 Object Sock dryers? Mystery object?
 Medium Light wood? (Balsa wood) with tape at back
 Size cms 1) 45.8 x 6.3 max. width 2) 33 x 5.5
 Condition Leather strip on back of large one Location Museum Room Q 1
 Notes The tape at the back must have had a purpose and what was it if these were sock dryers !?
 2013
 179



- 299** Maker 11. Domestic: objects
 Object Croquet Mallet
 Medium Wood with copper banding
 Size cms 81.7 full length x 3. diam handle Head 22.8 , diam 2.4
 Condition Good Location Museum Room Q 1
 Notes
 2013
 188



- 300** Maker 11. Domestic: objects
 Object Watering can
 Medium Galvanised iron
 Size cms 38 cms full height 45 full width 22.5 diam
 Condition Fair, neat repair Location Museum Room Q 1
 Notes This can has been carefully repaired
 2013
 192



- 301** **Maker** 11. Domestic: objects
Object Larger jug
Medium Galvanised iron
Size cms 30 cms 23.5 diam (varies)
Condition Fair **Location** Museum Room Q 1
Notes Check measurements ! which one has holes in base?
2013
193



- 302** **Maker** 11. Domestic: objects
Object Medium jug
Medium Galvanised iron
Size cms 26 cms 18 diam (varies)
Condition Fair **Location** Museum Room Q 1
Notes Check measurements ! which one has holes in base?
2013
194



- 303** **Maker** Hand made on Island by Mick Eccles (Pre 11. Domestic: objects
Object Croquet Mallet (1)
Medium Wood
Size cms 98 length Handle 4.0 variable Head: 18.3 x 8 variable
Condition Fair **Location** Museum Room Q 1
Notes Made by a caretaker - who?
2013
198



- 304** **Maker** Hand made on Island by Mick Eccles (Pre 11. Domestic: objects
Object Croquet Mallet (1)
Medium Wood Tea tree
Size cms 95 length Handle 4.0 variable Head: 18.3 x 8 variable
Condition Good **Location** Museum Room Q 1
Notes Made by a caretaker - who?
2013
199



305 **Maker**
Object Set of 9 wire croquet hoops
Medium Fencing wire
Size cms 45 x 22 variable
Condition
Notes Made by a caretaker - who?
2013
200

11. Domestic: objects

Location Museum Room Q 1



306 **Maker**
Object 4 croquet balls, Jack & two posts
Medium Various
Size cms Two posts: Approx 38 cms length. Various balls
Condition
Notes
2013
201

11. Domestic: objects

Location Museum Room Q 1



307 **Maker**
Object Weight training bench
Medium Wood, with old carpet
Size cms 19. h overall x 145 l overall 125 l bench section 42 h
Condition
Notes Roughly home made training bench made by?
2013
204

11. Domestic: objects

Location Museum Room Q 1



308 **Maker**
Object Set of home made made dumb bells
Medium Wood, with old carpet
Size cms 198 l x 21.5 diam of weight
Condition
Notes Dumb bells made from concrete set in a bucket with post placed in
2013
205

11. Domestic: objects

Location Museum Room Q 1



- 309** **Maker** 11. Domestic: objects
Object Mystery object
Medium Piece of dowel with string at end
Size cms 62.5 length 1.0 diam
Condition Location Museum Room Q 1
Notes Child's toy - ? fishing rod or the like
2013
208



- 310** **Maker** Mazda, Phillips, Osram 11. Domestic: objects
Object Four light globes
Medium Cardboard wrappings and glass globes
Size cms 15 cms long 1.6 x 1.6
Condition Location Museum Room Q 1
Notes These may have been for lamps or for domestic purposes
2013
218



- 311** **Maker** 11. Domestic: objects
Object Old meat tray
Medium Aluminium
Size cms 4.7 height 33.5 x 27.5
Condition Poor Location Museum Room Q 1
Notes Found in bush
2013
235



- 312** **Maker** 11. Domestic: objects
Object 3 blocks of Pumice soap?
Medium Soap
Size cms Each 6 x 4.5
Condition Poor Location Museum Room Q 1
Notes
2013
236



- 313** **Maker** 11. Domestic: objects
Object 1 block of pure soap?
Medium Soap
Size cms See Photo
Condition Poor
Notes Location Museum Room Q 1
 2013
 237



- 314** **Maker** 11. Domestic: objects
Object Cast iron cooking pot
Medium Iron
Size cms 11.5 x 30.4 (with handles diam 25.5)
Condition Poor
Notes Location Museum Room Q 1
 Found in bush
 2013
 239



- 315** **Maker** 11. Domestic: objects
Object Rusted door handle
Medium Rusted metal
Size cms See photo 16.0 x 7.6
Condition Poor
Notes Location Museum Room Q 1
 Probably found in bush
 2013
 246



- 316** **Maker** Tri Test 11. Domestic: objects
Object Bottle of tri test Spirit of sal volatile
Medium Glass bottle with oil inside
Size cms See photo 7.5 high
Condition Good
Notes Location Museum Room Q 1
 2013
 247



- 317** **Maker** 11. Domestic: objects
Object Shoe last
Medium Iron
Size cms 7.0 cms height at heel irreg. x 29.0 length 9.5 width
Condition Rusted **Location** Museum Room Q 1
Notes This is very large and heavy.
 2013
 249



- 318** **Maker** 11. Domestic: objects
Object Stove door **1950s?**
Medium Metal
Size cms 27 x 34 cms (including hinge) 6.5 depth with knob
Condition Fair **Location** Track: Tardis
Notes This is not of intrinsic "value" but contributes to a complete picture of the way of life on the Island
 2013
 304



- 319** **Maker** 11. Domestic: objects
Object Dust pan **1940s ?**
Medium
Size cms 47 x 27 x 3,5 handle 19.3
Condition Fair **Location** Q 2
Notes This has been so carefully made. It must predate plastic - date?
 2013
 332



- 320** **Maker** No marks 11. Domestic: objects
Object Glass stopper from bottle
Medium Glass
Size cms Length 3width 2.4 cm diam
Condition Fair **Location** Museum Cupboard shelf
Notes Ailsa picture 568
 2017
 692



- 321** **Maker** 11. Domestic: objects
Object Childs plastic sandal (left)
Medium Plastic (Polyethylene?)
Size cms Length 17.5 x width 7.2
Condition Plastic very brittle - originally white **Location** Museum Cupboard 3rd
Notes Ailsa picture 569-570
2017 Found in montbretia behind Q2 1/3/16
693



- 322** **Maker** Crystal 11. Domestic: objects
Object Enamel basin with lid **60s -**
Medium Enamel with rose design stencil
Size cms Lid 18cm diam, bowl 17.3 diam, 8.5 high
Condition Enamel damaged basin has two **Location** Museum Cupboard 4th
Notes Ailsa picture 578, 579
2017 Found 1-11/3/16
695



- 323** **Maker** Gary Miller (caretaker 2nd term) 9.2016- 11. Domestic: objects
Object Tung Oiled Coffee Table **1970s**
Medium Tas Oak, Made from old bed frames Jan 2017
Size cms Length 93.5cms, width 57cms, depth 42
Condition Good condition **Location** Q1 Living Room
Notes Ailsa picture 584-6
2017
698



- 324** **Maker** Gary Miller (caretaker 2nd term) 9.2016- 11. Domestic: objects
Object Rack for bread/chopping boards & new bread board **1970s**
Medium Tas Oak, Made from old bed frames Jan 2017
Size cms Rack: Length 31.5, width 18.3, Height 30 cms; Board 28 x 25.5 cms
Condition Good condition **Location** Q1 Kitchen
Notes Ailsa picture 592, 593, 594
2017
699



- 325** **Maker** Gary Miller (caretaker 1st term) 12.2010 **11. Domestic: objects**
Object Green and White painted outdoor table **1970s**
Medium Made from scrap timber
Size cms Length 67.5, width 49.5, Height 53.5cms;
Condition Good condition **Location** Q1 Courtyard
Notes Ailsa picture 597, 598, 599
2017
700



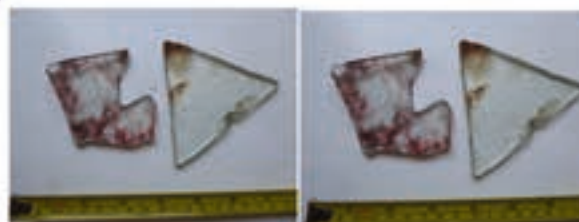
- 326** **Maker** Gary Miller (caretaker 1st term) 12.2010 **11. Domestic: objects**
Object Fly screen - food cover **1970s**
Medium Repaired with Tulle, wool, wire and spring from old secateurs
Size cms Diam 36.cms Height 15.cms;
Condition Corroded, repaired by Garry Miller **Location** Q1 Kitchen
Notes Ailsa picture 595, 596
2017
701



- 327** **Maker** **11. Domestic: objects**
Object Coconut shell - half **1890s?**
Medium Good condition
Size cms Height 6 x diam 10 cm
Condition Good **Location** Museum Hearth
Notes Dug up from Q 2 garden 2016/17 R. Mundy
2017 Ailsa picture 615-16
708



- 328** **Maker** **11. Domestic: objects**
Object Shards of glass **1890s?**
Medium 2 Glass one curved
Size cms Length 6.0 x 7mm thick
Condition Been in fire? **Location** Museum 3rd shelf
Notes Originally from tower? seems unlikely as found behind Q2 2016/17
2017 Ailsa picture 624, 25
711



329 **Maker**
Object 2 Shards of glass
Medium Glass one blue
Size cms
Condition Poor
Notes Ailsa picture 542, 543
2017
712

11. Domestic: objects
 1890s?

Location In workshop



330 **Maker**
Object Briquettes Assorted
Medium Compressed coal
Size cms See tape
Condition Poor
Notes Ailsa picture 648
 Found while mowing
2017
715

11. Domestic: objects
 1890s?

Location Museum Hearth



331 **Maker** Gary Miller (caretaker 2nd term) 9.2016-
Object Kitchen towel holder
Medium Varnished Wood with ends painted
Size cms
Condition Good condition
Notes Ailsa picture 584-6
2017
733

11. Domestic: objects
 1970s

Location Q1 Kitchen



332 **Maker** Commonwealth of Australia Broom
Object Broom
Medium Wood and horse hair
Size cms 145 cms long
Condition Good condition
Notes Ailsa picture 1010209-11
2017
734

11. Domestic: objects
 1970s

Location Q 3 Hallway



333 **Maker**
Object Dolls face
Medium Pink plastic with red painted lips
Size cms See tape in picture
Condition
Notes
 2013
 118

12. Domestic: children

Location Museum Room Q 1



334 **Maker**
Object Cow boy toy gun 1950s ?
Medium Metal alloy? with plastic handle
Size cms See tape in picture
Condition Corroded
Notes "Peacemaker"
 2013
 119

12. Domestic: children

Location Museum Room Q 1



335 **Maker**
Object Two toy cars red and grey
Medium Plastic
Size cms See tape in picture
Condition
Notes
 2013
 120

12. Domestic: children

Location Museum Room Q 1



336 **Maker**
Object Pair of child's patent leather shoes
Medium Leather
Size cms Approx 16 length & See tape in picture
Condition
Notes
 2013
 121

12. Domestic: children

Location Museum Room Q 1



337 Maker
 Object **Toy Boat**
 Medium **Green painted pine wood**
 Size cms **35 x 9.5 x 4.5**
 Condition
 Notes
2013
142

12. Domestic: children

Location Museum Room Q 1



338 Maker
 Object **Blue toy train loco**
 Medium **Plastic**
 Size cms **2.2 cm x 8.0 long x 1.5**
 Condition
 Notes **Found behind Q2 ?**
2013
151

12. Domestic: children

Location Museum Room Q 1



339 Maker
 Object **HMAS Boonie, toy boat? sign?**
 Medium **Wood**
 Size cms **35.5 x 12.7 cms 1.8 cm depth**
 Condition
 Notes
2013
196

12. Domestic: children

Location Museum Room Q 1



340 Maker
 Object **Toy boat**
 Medium **Wood, Painted lead to weight in place of keel**
 Size cms **8 hl x 59 l x 7**
 Condition
 Notes
2013
206

12. Domestic: children

Location Museum Room Q 1



- 341** **Maker** 12. Domestic: children
Object Toy boat
Medium Wood, Painted
Size cms 7.8 hl x 62.5 x 7
Condition Location Museum Room Q 1
Notes Home made
2013
207



- 342** **Maker** 12. Domestic: children
Object School desk
Medium Wood braced with metal
Size cms 69.7 h x 65 x 45
Condition Fair Location Q 1
Notes Originally for Keepers' children last used by Evie and Jonah
2013
273



- 343** **Maker** 12. Domestic: children
Object School desk
Medium Wood braced with metal with two stickers
Size cms 66 h x 6.8 x 45.5
Condition Fair Location Q 1
Notes Originally for Keepers' children last used by Evie and Jonah
2013
274



- 344** **Maker** 12. Domestic: children
Object Double sided black board
Medium Wood and (masonite core stock) with cord
Size cms 109.3 x 65
Condition Location Q 1
Notes Originally for Keepers' children last used by Evie and Jonah
2013
275



- 345** Maker 12. Domestic: children
 Object Toy Boat 1970s?
 Medium Plastic
 Size cms 14.5 x 8 x 2
 Condition Fair Location Museum shelves
 Notes Found by Sally Bryant March 2013 below the road, south of Olympic dam next to old hut in gully. 10 metres below the road. Was boat "rubbish" or was old hut which was tipped down gully used as a cubby by a child?
 2013
 333



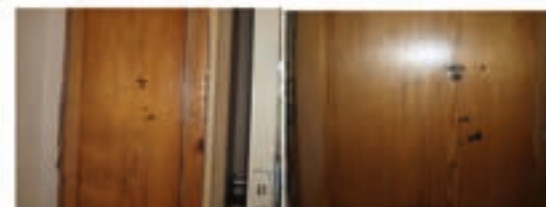
- 346** Maker 12. Domestic: children
 Object Child's School chair 1950s?
 Medium Plywood, yellow paint
 Size cms 57x 35 x 38
 Condition Good Location Q 2 Bedroom North East
 Notes No. 2 Quarters written under seat
 2013
 335



- 347** Maker 12. Domestic: children
 Object Child's School chair 1950s?
 Medium Plywood, blue paint
 Size cms 89 x 38 x 40
 Condition Good Location Q 1
 Notes
 2013
 415



- 348** Maker 12. Domestic: children
 Object Door frame with childrens' heights
 Medium Pine marked with text?
 Size cms
 Condition Good Location Q 2
 Notes Door into Kitchen
 2013
 418



- 349** Maker 12. Domestic: children
 Object Dolls leg 1970s
 Medium Plastic
 Size cms Original length 21cms
 Condition Fragile fragments Location Museum Cupboard 3rd
 Notes Ailsa picture 584
 2017 Found below road, near timber past Garney Gap1-11/3/16
 696



- 350** Maker 12. Domestic: children
 Object Child's inner sole 1890s?
 Medium Leather, fair - good condition
 Size cms 14 x 6 cm
 Condition Good Location Museum 3rd shelf
 Notes Found in drain 20 m North of Garneys Gap by Robyn Mundy 21/2/17
 2017 Ailsa picture 601,602,603
 703



- 351** Maker 13. Domestic: Bottles
 Object Bottle, Mercury Tas sparkling cider
 Medium Brown Glass
 Size cms 28 x 7.5
 Condition Good Location Museum Room Q 1 (Top
 Notes Left Bottle
 2013
 065



- 352** Maker 13. Domestic: Bottles
 Object Bottle, Casade
 Medium Clear glass
 Size cms 22.8 x 5.5
 Condition Good Location Museum Room Q 1 (Top
 Notes Centre bottle
 2013
 066



353 **Maker**
Object Bottle, Casade 26 fl oz
Medium Clear glass
Size cms 28.0 x 7.7
Condition Good
Notes RH bottle
 2013
 067

13. Domestic: Bottles

Location Museum Room Q 1 (Top)



354 **Maker**
Object Pickle jar, A. W. Townsend
Medium Clear glass
Size cms 13 x 5.5
Condition Good
Notes Left hand bottle
 2013
 068

13. Domestic: Bottles

Location Museum Room Q 1 (Top)



355 **Maker**
Object Sauce bottle
Medium Clear glass
Size cms 24 x 6.8 cms
Condition Good
Notes Centre bottle, oval Rosella Pres. & Manf. Co. . . . 2970
 2013
 069

13. Domestic: Bottles

Location Museum Room Q 1 (Top)



356 **Maker**
Object Sauce bottle, Holbrooks Worcestershire sauce
Medium Pale green glass, with air bubbles
Size cms 21.8 x 5.7 diam cms
Condition Good
Notes Glass has air bubbles, J on base
 2013
 070

13. Domestic: Bottles

Location Museum Room Q 1 (Top)



- 357** Maker 13. Domestic: Bottles
 Object ETA Brand jar with flare design Nut foods
 Medium clear glass,
 Size cms 10 cms x 8. 5. oval widest part
 Condition Good Location Museum Room Q 1 (Top
 Notes nut foods
 2013
 071



- 358** Maker 13. Domestic: Bottles
 Object Jar half jar vertically fluted other half plain
 Medium clear glass,
 Size cms 15.7 cms x 8.5 diam base 6.00. neck
 Condition Location Museum Room Q 1 (Top
 Notes This jar always remains the property of John Sutherland and sons Pty
 2013 Ltd
 072



- 359** Maker 13. Domestic: Bottles
 Object Leggo Jar
 Medium Clear glass
 Size cms 15. x 8.5 widest point
 Condition Location Museum Room Q 1 (Top
 Notes To contain only Leggos Jams pickles or preserves. This bottle is the
 2013 property of H M Leggo Co Ltd
 073



- 360** Maker 13. Domestic: Bottles
 Object Sauce bottle
 Medium Clear glass
 Size cms 19. x 6.0 approx square
 Condition Location Museum Room Q 1 (Top
 Notes This bottle always remains the property of Parke Davis & Co. Ltd
 2013
 074



- 361** Maker 13. Domestic: Bottles
 Object Sauce bottle
 Medium Clear glass
 Size cms 21. x 5.0 approx square
 Condition Location Museum Room Q 1 (Top
 Notes This bottle always remains C. N. Brooke & Sons property Re No 2767
 2013
 075



- 362** Maker 13. Domestic: Bottles
 Object Sauce bottle
 Medium Clear glass
 Size cms 23.5. x 6.0 approx square with cut edges
 Condition Location Museum Room Q 1 (Top
 Notes This bottle is the property of Studley preserving Co. Pty. Ltd
 2013
 076



- 363** Maker 13. Domestic: Bottles
 Object Sauce bottle
 Medium Clear glass
 Size cms 23.0 x 6.0 approx round
 Condition Location Museum Room Q 1 (Top
 Notes Contents 13 oz approx. property of H. Jones & Co Pty Ltd Hobart Tas
 2013
 077



- 364** Maker 13. Domestic: Bottles
 Object Pimms bottle
 Medium Clear with green tinge glass
 Size cms 29 x 7.5 base diam
 Condition Location Museum Room Q 1 (Top
 Notes This bottle always the property of Pimms Ltd
 Portion number - 1-7 up the size
 2013
 078



365 Maker
 Object Wine bottle
 Medium Light green tinged glass
 Size cms 43 x 7.0 approx base diam
 Condition
 Notes A34 S.3 x on base
 2013
 079

13. Domestic: Bottles

Location Museum Room Q 1 (Top



366 Maker
 Object Wine bottle
 Medium pale green tinged glass, with distinct bubbles
 Size cms 30 x 7.0 approx base diam
 Condition
 Notes No 14 plus logo on base
 2013
 080

13. Domestic: Bottles

Location Museum Room Q 1 (Top



367 Maker
 Object Sauce bottle
 Medium Thick clear glass, with fluted sides octagonal
 Size cms 28 x 8.0 approx base across
 Condition
 Notes This bottle is the property of Williams and sons Pty Ltd Alphington
 2013 Victoria Australia, bottle loaned Only and cannot be legally used by
 081 others.

13. Domestic: Bottles

Location Museum Room Q 1 (Top



368 Maker
 Object Sauce bottle
 Medium Clear glass, with fluted sides octagonal
 Size cms 28.5 x 8.0 approx base across
 Condition
 Notes The bottle is the property of H. Jones and Co. Pty Ltd Tasmania
 2013 (written on side of bottle)
 082

13. Domestic: Bottles

Location Museum Room Q 1 (Top



- 369** Maker 13. Domestic: Bottles
 Object Sauce bottle
 Medium Clear glass, with fluted sides octagonal
 Size cms 28.5 x 8.0 approx base across
 Condition Location Museum Room Q 1 (Top
 Notes The prop of Rosella Pres & Manf Coy Ltd Rego No 2510 (on base)
 2013
 083



- 370** Maker 13. Domestic: Bottles
 Object Wine bottle with cork
 Medium Clear glass, thick heavy base
 Size cms 29.0 x 7.5 approx base across
 Condition Location Museum Room Q 1 (Top
 Notes On Bottom: 039 / A1065 / A
 2013
 084



- 371** Maker 13. Domestic: Bottles
 Object Pino clean bottles (3)
 Medium Pale green glass, oval thick glass heavy base
 Size cms 23.3. x 9.3 base across widest point
 Condition One good condition, one dirty, one Location Museum Room Q 1 (Top
 Notes Front:Imperial / Oxford Pino Clean Back: / PINT /around lower bottle
 2013 /This bottle is the Property of Oxford Polish Co. Australia/
 085



- 372** Maker 13. Domestic: Bottles
 Object Spirit Bottle (Stones Green Ginger)?
 Medium Dark green glass, round with long neck
 Size cms 26 x 8.3 base diam
 Condition Location Museum Room Q 1 (Top
 Notes Base P & A ?
 2013
 086



- 373** Maker 13. Domestic: Bottles
 Object Medicine Bottle or Bleach
 Medium Thick Brown glass with narrow neck
 Size cms 21.5 x 6.8 base diam
 Condition Location Museum Room Q 1 (Top
 Notes "Keep bottle upright Simpson white King" (on body)
 2013
 087



- 374** Maker 13. Domestic: Bottles
 Object Dettol Bottle
 Medium Amber glass
 Size cms 15.2 x 8.5 cm across x 3.8
 Condition Location Museum Room Q 1 (Top
 Notes With measure marks (table spoons) up side
 2013
 088



- 375** Maker 13. Domestic: Bottles
 Object Medicine ? Bottle
 Medium Brown glass
 Size cms 17.7 x 5 cm base diam
 Condition Location Museum Room Q 1 (Top
 Notes 1948 A 1046
 2013
 089



- 376** Maker 13. Domestic: Bottles
 Object Bottle
 Medium Brown square glass
 Size cms 21.2 x 4.7 cm base across
 Condition Location Museum Room Q 1 (Top
 Notes
 2013
 090



- 377** Maker 13. Domestic: Bottles
 Object Rectangular Bottle
 Medium Brown glass
 Size cms 19.5 x 7.2 x 4.3 base
 Condition Location Museum Room Q 1 (Top
 Notes 1 on front at base see photo F1159
 2013
 091



- 378** Maker 13. Domestic: Bottles
 Object Bottle
 Medium Two Brown square glass with corks
 Size cms 21.2 (without cork) x 4.7 cm base across
 Condition Location Museum Room Q 1 (Top
 Notes 4 similar in photo
 2013 One side with label panel . No 1A on bottom edge Base: K 5 see
 092 photo



- 379** Maker 13. Domestic: Bottles
 Object Bottle
 Medium Brown square glass with screw top
 Size cms 20.5 x 4.7 cm base across
 Condition Location Museum Room Q 1 (Top
 Notes 4 similar in photo
 2013 One side with label panel . No 1A on bottom edge Base: K 5 see
 093 photo



- 380** Maker 13. Domestic: Bottles
 Object Bottle
 Medium Brown square glass
 Size cms 20.1 x 4.7 cm base across
 Condition Location Museum Room Q 1 (Top
 Notes 4 similar in photo
 2013 One side with label panel . No 1A on bottom edge Base: K 5 see
 094 photo



- 381** Maker 13. Domestic: Bottles
 Object Pino clean Bottle
 Medium Brown Oval glass
 Size cms 23.5 x 9.2 x 5.9 cm base
 Condition Location Museum Room Q 1 (Top
 Notes Front: Imperial / Oxford Pino Clean Back: / PINT /around lower bottle
 2013 /This bottle is the Property of Oxford Polish Co. Australia/
 095



- 382** Maker 13. Domestic: Bottles
 Object Bottle
 Medium Brown oval glass with cork
 Size cms 26.8 x 9.6 x 5.7 cm base
 Condition Location Museum Room Q 1 (Top
 Notes 6 on bottle Logo Base F541 * / M
 2013
 096



- 383** Maker 13. Domestic: Bottles
 Object Wine Bottle (Penfold)
 Medium Brown glass
 Size cms 30 x 7.5 cm base
 Condition Location Museum Room Q 1 (Top
 Notes
 2013
 097



- 384** Maker 13. Domestic: Bottles
 Object Jam Jar
 Medium Clear glass
 Size cms 17.5 x 7.7 cm base
 Condition Location Museum Room Q 1 (Top
 Notes The property of Australasian Jam Co Pty Ltd Melbourne
 2013 J 261
 098



385 Maker

13. Domestic: Bottles

Object Brown jar with screw top (no top)

Medium Brown glass, imperfect with indent on one side

Size cms 9.8 x 5.2 diam at base

Condition

Notes Kruschen salts written up side

2013
109 On base 8 / 2998

Location Museum Room Q 1

**386** Maker

13. Domestic: Bottles

Object Brown jar with screw top (no top)

Medium Brown glass, thick

Size cms 11 x 7.3 diam at base

Condition

Notes 1942 on base (date)

2013
110

Location Museum Room Q 1

**387** Maker

13. Domestic: Bottles

Object Vegemite Jar

Medium Clear glass with some ripple imperfection on one side

Size cms 11 x 7 diam at base

Condition

Notes

2013
111

Location Museum Room Q 1

**388** Maker

13. Domestic: Bottles

Object Bovril Jar

Medium Brown Glass

Size cms 8 x 6 maximum width

Condition

Notes Bovril Limited 203

2013
112 Bovril limited on other side Base : U O 5?

Location Museum Room Q 1



389 Maker
 Object Small bottle (Medicine)
 Medium Brown Glass
 Size cms 6.7 x 3.5 diam at base
 Condition
 Notes M 44 on base
 2013
 113

13. Domestic: Bottles

Location Museum Room Q 1



390 Maker
 Object Ink Bottle
 Medium Clear glass
 Size cms 6 cm x 6.8 max. width 4.3 depth
 Condition
 Notes Waterman's / 2 oz 16s / Rego No. / 908853
 2013
 114

13. Domestic: Bottles

Location Museum Room Q 1



391 Maker
 Object Marmite Jar
 Medium White opaque glass
 Size cms 7 cm x 5.8 diam at base
 Condition
 Notes PROPERTY OF MARMITE Company same logo as on some other jars
 2013
 115

13. Domestic: Bottles

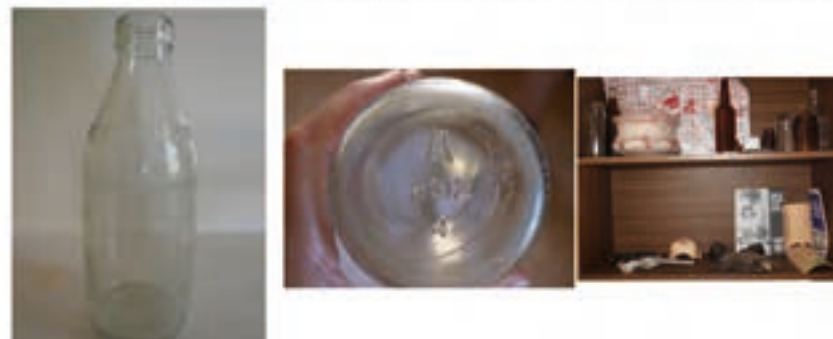
Location Museum Room Q 1



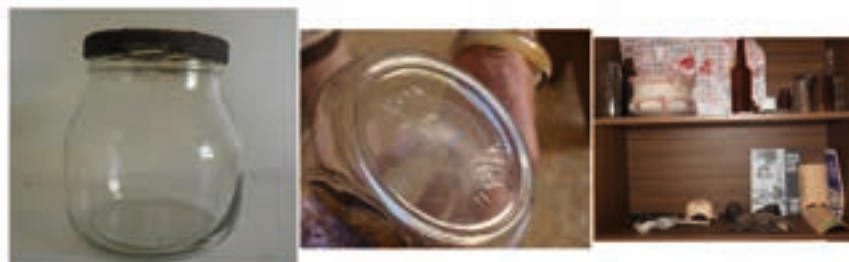
392 Maker
 Object Milk Bottle
 Medium Clear glass
 Size cms 20.5 cm x 7.7 diam at base
 Condition
 Notes PHOTO of base 2212 / 4 plus the logo
 2013
 116

13. Domestic: Bottles

Location Museum Room Q 1



- 393** **Maker** 13. Domestic: Bottles
Object Pickle? Jar
Medium Clear glass with very corroded lid
Size cms 15.5 (includes lid) cm x 15 diam at widest point
Condition Location Museum Room Q 1
Notes PHOTO of base
2013
117



- 394** **Maker** 13. Domestic: Bottles
Object Sherry flagon
Medium Clear glass
Size cms 28 height diam 14 cm
Condition Location Museum Room Q 1
Notes Perhaps not worth keeping?
2013
128



- 395** **Maker** 13. Domestic: Bottles
Object Cordial bottles (2)
Medium Clear glass with leaf motif
Size cms 28 height diam 14 cm
Condition Location Museum Room Q 1
Notes
2013
129



- 396** **Maker** 13. Domestic: Bottles
Object Squared bottle: Aromatic Schnapps / Schiedam / M.P. Pollen &
Medium Thick glass tinged green with bubbles
Size cms 24.8 height 7. across cm
Condition Roughly broken at neck Location Museum Room Q 1
Notes
2013
130



397 Maker
 Object Coca cola bottle
 Medium Clear glass
 Size cms 30 height 8 diam at base
 Condition Fair
 Notes
 2013
 131

13. Domestic: Bottles

Location Museum Room Q 1



398 Maker
 Object Coca cola bottles (2)
 Medium Clear glass
 Size cms 19.7 height 5.8 diam at base
 Condition Fair
 Notes
 2013
 132

13. Domestic: Bottles

Location Museum Room Q 1



399 Maker
 Object Squared bottle:
 Medium Thick glass tinged green rough cast
 Size cms 18.5 height 5.3 square at base
 Condition Deeply cracked on side, Roughly
 Notes
 2013
 133

13. Domestic: Bottles

Location Museum Room Q 1



400 Maker
 Object Cascade
 Medium Clear glass with white paint
 Size cms 27.8 height 8.0 diam at base
 Condition Fair
 Notes
 2013
 134

13. Domestic: Bottles

Location Museum Room Q 1



- 401** Maker 13. Domestic: Bottles
 Object Cascade
 Medium Clear glass with white paint
 Size cms 22.5 height 5.5 diam at base
 Condition Fair Location Museum Room Q 1
 Notes
 2013
 135



- 402** Maker 13. Domestic: Bottles
 Object Rosella Sauce Bottle
 Medium Clear glass, ribbed with clear section for label
 Size cms 21.8 height 6.5 diam at base
 Condition Fair Location Museum Room Q 1
 Notes On bottle written up side: This bottle belongs to the Rosella Co. Pty.
 2013 Ltd. Reg no. 2969
 137



- 403** Maker 13. Domestic: Bottles
 Object Imperial Oxford pino clean (3 bottles)
 Medium Clear glass, oval
 Size cms 21.8 height 6.5 diam at base
 Condition Fair, third one very broken at neck Location Museum Room Q 1
 Notes
 2013
 138



- 404** Maker 13. Domestic: Bottles
 Object Hunters Bleach?
 Medium Finely Ribbed with clear sections glass, oval
 Size cms 23.2 height 6.9 length of oval at base
 Condition Broken at neck Location Museum Room Q 1
 Notes On bottle written up side Caution not to be taken.
 2013 Property of Hunter Products. This container must not be used for food
 139 or drink.



- 405** Maker 13. Domestic: Bottles
 Object Glass bottle top
 Medium Glass
 Size cms 3.4 length diam at top 2.5 (irreg.)
 Condition Worn from floating? worn
 Notes Possible found on beach?
 2013
 248

Location Museum Room Q 1



- 406** Maker (Klaora)? 13. Domestic: Bottles
 Object Bottle with corroded lid 1890s?
 Medium Good condition
 Size cms Height 29.5 x diam 8.5 cm
 Condition Good
 Notes Found while mowing 2016/17
 2017 Ailsa picture 604, 605, 606
 704

Location Museum 2nd shelf



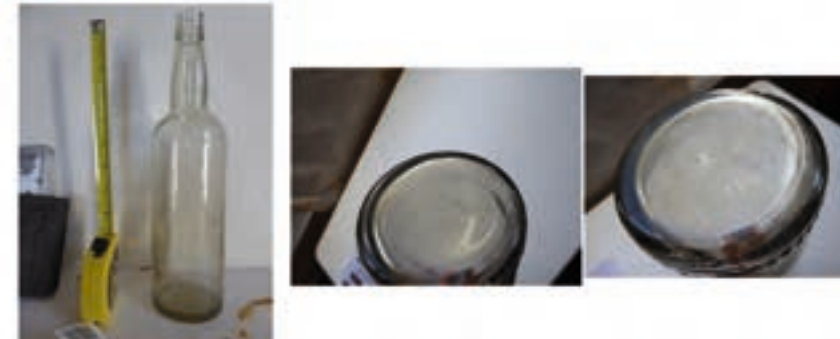
- 407** Maker 13. Domestic: Bottles
 Object Bottle clear glass (? sauce) 1890s?
 Medium Good condition
 Size cms Height 23x diam 6.5 cm
 Condition Good
 Notes Found while mowing 2016/17
 2017 Ailsa picture 607-9
 705

Location Museum 2nd shelf



- 408** Maker 13. Domestic: Bottles
 Object Bottle clear glass 1890s?
 Medium Good condition
 Size cms Height 30.5x diam 7.5 cm
 Condition Good
 Notes Found while mowing 2016/17
 2017 Ailsa picture 610-12
 706 "This bottle is the property of Traders Pty Ltd Hobart" (round base)

Location Museum 2nd shelf



- 409** **Maker** Penfolds (sherry) **13. Domestic: Bottles**
Object Bottle Brown glass **1890s?**
Medium Good condition
Size cms Height 23x diam 6.5 cm
Condition Good **Location** Museum 2nd shelf
Notes Found while mowing 2016/17
2017 Ailsa picture 613-14
707 "The bottle always remains the Property of Penfolds Pty Ltd"



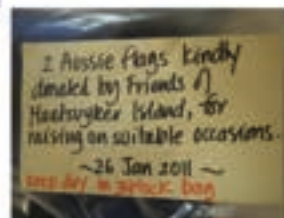
- 410** **Maker** **14. Domestic: can**
Object Big Boy Lemonade can
Medium Aluminium
Size cms 13 height 6.5 diam at base
Condition Fair **Location** Museum Room Q 1
Notes
2013
136



- 411** **Maker** **14. Domestic: can**
Object 2 Drink cans, BOAGS XXXX 370ml Coca cola 13 Fl.oz **1890s?**
Medium Aluminium
Size cms Height 13 cms diam 6.5
Condition Poor **Location** Museum shelf 3
Notes Ailsa picture 646
2017 Found while brush cutting
713



- 412** **Maker** **15. Caretakers Equipment**
Object Australian flats x 2 **2011**
Medium Cotton
Size cms
Condition New **Location** Tower, First floor
Notes Labelled 2 Australian flags kindly donated by Friends of Maatsuyker Island for raising on suitable occasions.
2013
059



- 413** **Maker** Various caretakers **15. Caretakers Equipment**
Object Caretakers' Table cloth **2009 -**
Medium Calico Table cloth edged with dark green and white edging
Size cms 175 x 112
Condition Good **Location** Q 1
Notes This has a number of individual embroideries made by different caretakers as detailed below.
2013
259



- 414** **Maker** Meryl & Roger (caretakers) **15. Caretakers Equipment**
Object Caretakers' Table cloth **2012**
Medium Calico Table cloth edged with dark green and white edging
Size cms
Condition Good **Location** Q 1
Notes Individual embroidery of light tower with flags
2013
260



- 415** **Maker** Gwen Egg **15. Caretakers Equipment**
Object Caretakers' Table cloth embroidery **2012**
Medium Calico Table cloth edged with dark green and white edging
Size cms
Condition Good **Location** Q 1
Notes Individual embroidery for her second Christmas on Maatsuyker
2013
261



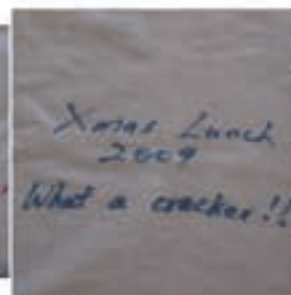
- 416** **Maker** Gwen Egg & Annette **15. Caretakers Equipment**
Object Caretakers' Table cloth embroidery **2010**
Medium Calico Table cloth edged with dark green and white edging
Size cms
Condition Fair - stitching good but ink writing **Location** Q 1
Notes (Seal)Drawn by Gwen Egg when she was at Maat as a 18 year old. Copied and stitched by Annette caretaker Oct. 09 - Feb. 10. Egg was artist here at that time. How good is that?
2013
262



- 417** **Maker** Gwen Egg 15. Caretakers Equipment
Object Caretakers' Table cloth embroidery **2010**
Medium Calico Table cloth edged with dark green and white edging
Size cms
Condition Good Location Q 1
Notes Flower embroidery signed Gwen Egg Feb. - Aug. 2012
 2013
 263



- 418** **Maker** Trevor, Annette, Gwen & Marina 15. Caretakers Equipment
Object Caretakers' Table cloth embroidery **2009**
Medium Calico Table cloth edged with dark green and white edging
Size cms
Condition Good Location Q 1
Notes Ink writing in two colours: Maatsuyker Christmas 2009 Trevor, Annette, Gwen, Min. Fun, Food, laughter & the weather also Happy Christmas 2009 Fairy Lights on Maat & Limington.
 2013
 264



- 419** **Maker** Marina Campbell 15. Caretakers Equipment
Object Caretakers' Table cloth embroidery **2012**
Medium Calico Table cloth edged with dark green and white edging
Size cms
Condition Good Location Q 1
Notes Image of shearwater and moon - Min Feb.- Aug.' 12
 2013
 265



- 420** **Maker** Marsha & Marg 15. Caretakers Equipment
Object Caretakers' Table cloth embroidery **2012**
Medium Calico Table cloth edged with dark green and white edging
Size cms
Condition Good Location Q 1
Notes Pink Robin - Marsha & Marg Dec. 2011 Jan 2012
 2013
 266



- 421** Maker Evie Hamilton 15. Caretakers Equipment
 Object Caretakers' Table cloth embroidery 2010
 Medium Calico Table cloth edged with dark green and white edging
 Size cms
 Condition Good Location Q 1
 Notes Drawing in Texta of figure - Evie 2010
 2013
 267



- 422** Maker Jonah Hamilton 15. Caretakers Equipment
 Object Caretakers' Table cloth embroidery 2010
 Medium Calico Table cloth edged with dark green and white edging
 Size cms 175 x 112
 Condition Good Location Q 1
 Notes Drawing in Texta of Dave (the truck) Jonah 2010
 2013
 268



- 423** Maker Annette Walsh 15. Caretakers Equipment
 Object Tea Cosy 2009
 Medium Ugg Boots and Australian Flags
 Size cms 15 x 15 Irreg. diam
 Condition Fair - shows tea staining Location Q 1
 Notes This was made by Annette - caretaker
 2013
 269



- 424** Maker Gwen Egg 15. Caretakers Equipment
 Object Hot hands 2010
 Medium Corduroy and cotton material
 Size cms 20 x 15 cms
 Condition Good Location Q 1
 Notes Gwen Egg artist in residence summer of 2009/2010
 2013
 EDIT
 2017
 270



- 425** **Maker** Gwen Egg 15. Caretakers Equipment
Object Hot hands **2010**
Medium Old flannelette or baby blanket
Size cms 20 x 14 cms
Condition Location Q 1
Notes Gwen Egg artist in residence summer of 2009/2010
2013
271



- 426** **Maker** Roger & Meryl Jan 2012 15. Caretakers Equipment
Object Maatsuyker Island Croquet Cup **2012**
Medium Old aluminium saucepan with Tea tree wood base
Size cms 26.3 x 12.6
Condition Good Location Q 1
Notes Label: Maat Croquet Cup / Inaugural Match 02 day 2012/ Cup
2013 Champion Marsha Durham
272



- 427** **Maker** Caretaker 15. Caretakers Equipment
Object Tray
Medium Island T Tree and old boards
Size cms 70.5 x 34 x 10 full depth at handle
Condition Good Location Q 1
Notes Who made this?
2013
279



- 428** **Maker** 15. Caretakers Equipment
Object Childrens sledge **2010**
Medium Reused pine boards
Size cms 63. x 41.5 full height with lamp x 25
Condition Good Location Q 1
Notes Recent caretakers
2013
280



- 429** Maker 15. Caretakers Equipment
 Object School Bell **2010**
 Medium Piece of steel with cord and fishing weight
 Size cms 16.5 x 7.3 diam
 Condition Good Location Q 1
 Notes
 2013
 281



- 430** Maker 16. House fittings
 Object Brass window handles 2 painted in SE bedroom and two
 Medium Brass
 Size cms 5.7 x 5 x 3.2
 Condition Good Location Q 1
 Notes These windows are original sash windows
 2013
 276



- 431** Maker 16. House fittings
 Object Two Chandeliers
 Medium Plastic crystals and metal
 Size cms 26.5 x 26 cms
 Condition Good Location Q 1
 Notes I remember these being a great thing to have in the late 60s in UK!
 2013
 278



- 432** Maker 16. House fittings
 Object Wonderheat Heater **1960s?**
 Medium Plywood, yellow paint
 Size cms 66 x 80 including tile surround
 Condition Not serviceable - with tag Location Q 2 Bedroom North East
 Notes
 2013
 336



- 433** **Maker** 16. House fittings
Object 1890s fireplace mantle **1890**
Medium Wood - painted white
Size cms 122 x 162
Condition Good - painted with high gloss paint. **Location** Q 2 Bedroom North East
Notes
2013
337



- 434** **Maker** 16. House fittings
Object 1890s fireplace mantle **1890**
Medium Wood - painted Blue
Size cms 122 x 162
Condition Good - painted with high gloss paint. **Location** Q 2 Bedroom North
Notes
2013
338



- 435** **Maker** 16. House fittings
Object 1890s fireplace mantle **1890**
Medium Wood - painted yellow
Size cms 120 x 162
Condition Good - painted with high gloss paint. **Location** Q 2 Bedroom South East
Notes
2013
339

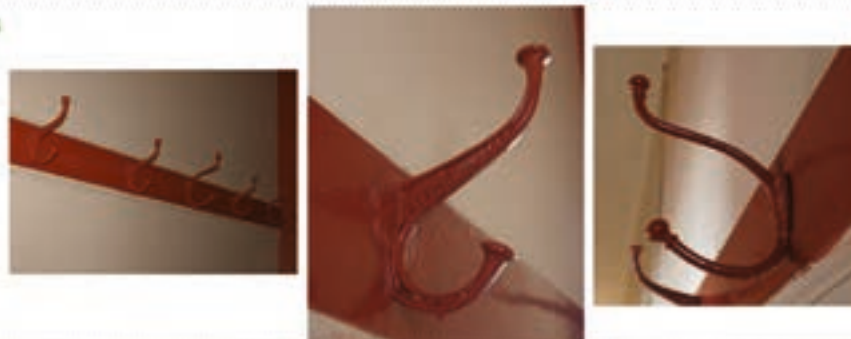


- 436** **Maker** 16. House fittings
Object 1890s fireplace mantle **1890**
Medium Wood - painted white and grey
Size cms 122 x 160
Condition Good - painted with high gloss paint. **Location** Q 2 Bedroom South
Notes Copper sheeting filled out old fire place
2013
340



- 437** **Maker**
Object 7 coat hooks on wooden board
Medium Metal and wood painted red
Size cms Base plate 185 x 15 , Hooks approx 15.0 cms high
Condition Good, heavily painted with gloss red. **Location** Q 2 Passageway
Notes
 2013
 343

16. House fittings



- 438** **Maker**
Object Pantry "meat safe" cupboard
Medium Wood, Possibly Oak, varnished with mesh sides and doors
Size cms 111.5 high x 169 x 46.5 Hooks approx 15.0 cms high
Condition Good, varnished wood **Location** Q 2 Pantry
Notes
 2013
 344

16. House fittings
1950s?

- 439** **Maker**
Object Pantry "meat safe" cupboard
Medium Wood, Possibly Oak, varnished with mesh sides and doors
Size cms 111.5 high x 169 x 46.5 Hooks approx 15.0 cms high
Condition Good, varnished wood **Location** Q 3 Pantry
Notes
 2013
 346

16. House fittings
1950s?

- 440** **Maker**
Object 4 Windows
Medium Wood, several layers of paint
Size cms 112 high x 123 irreg.; 12 panes each: 39.5 x 33
Condition Poor: 2 reasonably intact, 2 partially **Location** Q 3 Pantry
Notes These came from southern verandah at Q1 originally?
 2013
 347

16. House fittings
1890s?

441 Maker
 Object 1890s fireplace mantle
 Medium Painted wood
 Size cms 122 x 158
 Condition Good
 Notes
 2013
 349

16. House fittings
 1890s?

Location Q 3 Bedroom North



442 Maker
 Object 1890s fireplace mantle
 Medium Painted wood
 Size cms 122 x 158
 Condition Good
 Notes
 2013
 350

16. House fittings
 1890s?

Location Q 3 Bedroom North



443 Maker
 Object 1890s fireplace mantle
 Medium Painted wood
 Size cms 122 x 158
 Condition Good
 Notes
 2013
 351

16. House fittings
 1890s?

Location Q 3 Bedroom South



444 Maker
 Object 1890s fireplace mantle
 Medium Painted wood
 Size cms 122 x 158
 Condition Good
 Notes
 2013
 352

16. House fittings
 1890s?

Location Q 3 Bedroom South

With brass plate across fireplace, same as in mantle in Q 2



- 445** **Maker** 16. House fittings
Object 1890s Wall vents
Medium Painted Metal
Size cms 18 x 26 approx (guessed)
Condition Good **Location** Q 3 Bedroom South
Notes These are in many rooms, often placed high above the fireplace
2013
353



- 446** **Maker** 16. House fittings
Object Window
Medium Painted wood
Size cms 57 x 70 (window itself)
Condition Fair - recent maintenance visible **Location** Q 3 South Verandah
Notes This is an example of the older style window, of which there would have been many. It matches the old much larger one stored in Q3 pantry
2013
354



- 447** **Maker** 16. House fittings
Object 1890 Wall vent above fireplace
Medium Painted Metal
Size cms 18 x 26 approx (guessed)
Condition Good **Location** Museum
Notes See record 353 for similar objects
2017
702



- 448** **Maker** 16. House fittings
Object Window fitting in Q1 Qorkshop
Medium Painted Metal
Size cms
Condition **Location** Q1 Workshop
Notes
2017
783 Ailsa picture 1000628



- 449** **Maker** Gwen Egg **17. Outdoors: artwork**
Object Sculptural hen **2012**
Medium Papier Mache
Size cms 38 x 60 x 20 approx.
Condition Good **Location** Hen house
Notes Made by Gwen Egg when artist in residence and placed in the old hen house.
2013
EDIT
2017 New photo Ailsa 2017
402



- 450** **Maker** **17. Outdoors: farming**
Object Gun cartridge Winchester Australia 12 bore
Medium Blue plastic
Size cms 6.8 x 2.0 diam at end cms
Condition **Location** Museum Room Q 1
Notes
2013
149



- 451** **Maker** **17. Outdoors: farming**
Object Rabbit trap
Medium Rusted metal
Size cms 31 cms full length
Condition Very rusted and fragile **Location** Museum Room Q 1
Notes
2013
159



- 452** **Maker** **17. Outdoors: farming**
Object Sheep's skull **1990s?**
Medium Bone
Size cms 7h x 16 x 10 (2 sides together)
Condition Poor **Location** Museum Room Q 1
Notes Found in ground edge of mowed section near orchard by Rosanna Cameron 2013
2013
399 Kept to illustrate remains of farming life on the Island.



- 453** **Maker** 17. Outdoors: farming
Object Cow skull **1980s?**
Medium Bone
Size cms
Condition Poor **Location** Hen house
Notes This could have been one that rested in a tree below the helipad for some years. Since 2005 the path has collapsed was it placed here for safekeeping? Kept to illustrate remains of farming life on the Island.
2013
400



- 454** **Maker** Caretakers **17. Outdoors: Garden**
Object Garden
Medium
Size cms
Condition **Location**
Notes This area has been developed over the years by all caretakers. The RH structure was part of the new light and due to go off the island in 2013 see record: 420 Now Rosemary Rotunda
2017
735



- 455** **Maker** Gary Millar 2016/17 **17. Outdoors: Garden**
Object Polly Garden No. 2
Medium
Size cms
Condition **Location**
Notes This area has been developed over the years by all caretakers. This tunnel was built by Gary Miller, Caretaker Summer 2016/17
2017
736



- 456** **Maker** Gary Millar 2016/17 **17. Outdoors: Garden**
Object Polly Garden No. 2
Medium
Size cms
Condition **Location**
Notes This area has been developed over the years by all caretakers. This tunnel was built by Gary Miller, Caretaker Summer 2016/17
2017
737



457 Maker Gary Millar 2016/17

17. Outdoors: Garden

Object Polly Garden

Medium

Size cms

Condition

Location

Notes This area has been developed over the years by all caretakers. This tunnel was built by Gary Miller, Caretaker Summer 2016/17

2017
738

458 Maker Gary Millar 2016/17

17. Outdoors: Garden

Object Garden Greenhouse

Medium

Size cms

Condition

Location

Notes This area has been developed over the years by all caretakers
Ailsa photo 1000437, 436, 4352017
739

459 Maker Gary Millar 2016/17

17. Outdoors: Garden

Object Polly Garden

Medium

Size cms

Condition

Location

Notes This area has been developed over the years by all caretakers
Ailsa photo 10004, 38, 39, 40,2017
740

460 Maker Keepers & Caretakers

17. Outdoors: Garden

Object Tanks at Secret Garden

2017

Medium Copper

Size cms Small, 63 cm high, larger 110 cms high

Condition Good

Location Outdoors track from

Notes Tanks moved from Whim (one left behind) by Robyn Mundy & Gary Miller.

2017
790

Ailsa photo 1000991, 992, 993



- 461** **Maker** Keepers & Caretakers **17. Outdoors: Garden**
Object Secret Garden near chicken house restored for use by Garry **2017**
Medium
Size cms
Condition Good **Location** Outdoors track from
Notes Secret garden revived by Gary Miller
2017 Ailsa photo 1000994, 995, 996, 997
791



- 462** **Maker** Keepers **17. Outdoors: General**
Object Water tank
Medium Concrete
Size cms 133 x 185 diam
Condition
Notes **Location** Track: near paint shed
 Originally this would have been an iron tank. As it rusted it was repaired inside with concrete and mesh wire . Finally the original corrugated metal rusts and is removed.
2013
292



- 463** **Maker** Parks & Wildlife / Caretakers **17. Outdoors: General**
Object Wind generator mast **2007/8?**
Medium Iron
Size cms
Condition
Notes **Location** Track: near fuel tanks
 This was installed in 2007? but due to the extreme winds was unworkable and discarded.
2013
294 Two 2017 photos from Ailsa 1000967, 8



- 464** **Maker** **17. Outdoors: General**
Object Box for fire extinguisher **1960s?**
Medium Metal, painted red
Size cms Box 91.5 x91 x40.5
Condition
Notes **Location** Track near fuel tanks
 This box is by the fuel tanks up the track from the tower and generator shed.
2013 There were others around the Island in places where fuel was stored.
295



- 465** **Maker** 17. Outdoors: General
Object Water tanks discarded down gully near Olympic dam
Medium Corrugated iron
Size cms
Condition Location Track: lower side, just near
Notes Rubbish was discarded in the gullies - no thought was given at the time for the
2013 Island's environment.
297



- 466** **Maker** 17. Outdoors: General
Object Olympic Pool
Medium
Size cms
Condition Location Olympic dam
Notes This was constructed to store the Island's only fresh water supply. It
2013 was discarded for use?
EDIT Also known as Olympic dam or the pond
2017
298



- 467** **Maker** 17. Outdoors: General
Object Seal Skull, australian or NZfur seal **1980s?**
Medium Bone
Size cms length 25 width 15 cms wide
Condition Poor Location Hen house
Notes Adolescent seal skull, teeth not worn, apices open on conines, many
2013 unerupted teeth (Note from Ailsa)
EDIT Ailsa Photo 2017 1000979. 80, 81, 82
2017
401



- 468** **Maker** 17. Outdoors: General
Object Pipes/railings access sections **1920s?**
Medium Metal pipe section, with rubber and fibre inserts
Size cms Access section in pipe approx. 93 cms. long
Condition Good Location Various parts of
Notes Around the island there are old pipes which seem to be positioned to
403 double as road side markers and conduits communications and water.



- 469** **Maker** Keepers **17. Outdoors: General**
Object Childrens' cubby house **1960s?**
Medium Wood fibreboard & some asbestos sheeting
Size cms 190 H. from ground, 142 wide 125 depth
Condition Poor **Location** Located behind Q2
Notes This was built for some keepers' children. Since the understanding of the dangers of asbestos it has been boarded over.
404



- 470** **Maker** **17. Outdoors: General**
Object Double sink **1890s?**
Medium Concrete with metal edge
Size cms 140 x 54 x 35 cms.
Condition Poor **Location** Located behind Q2
Notes The old double sink reused as a garden planter.
405



- 471** **Maker** Keeper **17. Outdoors: General**
Object Briquette stove, **1960s?**
Medium Built out of old interior fire box and brickwork
Size cms Height to top 78 cms. x 95, 80 approx. full depth with chimney
Condition Poor **Location** Back of Q 2
Notes Originally used by light keepers for cooking and heating moved out in 1980s for use as a bbq
2013
EDIT
2017
407



- 472** **Maker** Caretakers **17. Outdoors: General**
Object Helipad
Medium Concrete - painted
Size cms
Condition Poor **Location** Helipad
Notes This is likely to be repaired or replaced because of damage - these photos record it and the paintings.
2013
EDIT
2017
417



- 473** **Maker** Keepers **17. Outdoors: General**
Object Brick garden bed with Hydrangea
Medium
Size cms 34h x 120 x 94 deep cms. approx.
Condition Location Behind Q3
Notes This is a magnificent hydrangea and as it cannot and does not spread
 2013 has been left in spite of many weed clearing expeditions.
 419



- 474** **Maker** **17. Outdoors: General**
Object Tank behind the shed
Medium
Size cms
Condition Location
Notes Ailsa Photo P1010064
 2017 Tanks similar to this have been moved to the "Secret Garden"
 758



- 475** **Maker** **17. Outdoors: General**
Object Workshop **1990**
Medium
Size cms
Condition Location Outdoors
Notes Ailsa photo 1000280, 81, 82
 2017
 777



- 476** **Maker** **17. Outdoors: General**
Object Safety signs **1890s**
Medium
Size cms
Condition Location Tower, Top
Notes Sign from top of tower
 2017 Ailsa photo 1000327
 779



477 **Maker**
Object Tanks at Q 2
Medium
Size cms
Condition
Notes
2017 Ailsa photo1000527, 528, 1000279
780

17. Outdoors: General
1890s

Location Outside Q 3



478 **Maker**
Object Tanks & pipes in situ above Q3
Medium
Size cms
Condition
Notes
2017 Ailsa photo1000533,
781

17. Outdoors: General
1890s

Location Tower, Top



479 **Maker**
Object Fence at Q1
Medium
Size cms
Condition
Notes Ailsa photo 1000630, 631
2017
782

17. Outdoors: General
1890s

Location Tower, Top



480 **Maker** Caretaker
Object Box for forcing seeds?
Medium Wood, painted
Size cms
Condition Good
Notes
2017 Ailsa photo 1000629
785

17. Outdoors: General
1950s?

Location Q 1 By back door



481 **Maker** Keepers
Object Water tanks
Medium Steel
Size cms
Condition Good
Notes
2017 Ailsa photo 1000632, 633
786

17. Outdoors: General
 1950s?

Location Outdoors track from



482 **Maker** Keepers
Object Fuel tanks
Medium Steel
Size cms
Condition Poor
Notes
2017 Ailsa photo 1000966,
787

17. Outdoors: General
 1950s?

Location Outdoors track from



483 **Maker** Keepers & Caretakers
Object Chicken house
Medium
Size cms
Condition Good
Notes
2017 Ailsa photo 1000985, 86, 88, 89
788

17. Outdoors: General

Location Outdoors track from



484 **Maker** Keepers & Caretakers
Object Secret Garden near chicken house
Medium
Size cms
Condition Good
Notes
2017 Ailsa photo 100098,
789

17. Outdoors: General

Location Outdoors track from



485 **Maker** Keepers & Caretakers
Object Orchard
Medium
Size cms
Condition Good
Notes
2017 Ailsa photo 1010002
792

17. Outdoors: General
 2017

Location Outdoors track from



486 **Maker**
Object Water Tank
Medium
Size cms
Condition
Notes Bruce Francombe repaired tanks and added joke Dali Signature.
2017 Ailsa photo 1000527, 528, 1000279
794

17. Outdoors: General
 1890s

Location Outside Q 3



487 **Maker**
Object Servicing pit for vehicles
Medium Concrete
Size cms 70 cms wide (currently 56.cms deep but still soil to go)
Condition
Notes Excavated by Gary Miller
2017 Ailsa photo 1010212, 3, 4
795

17. Outdoors: General
 1890s

Location Adjacent to Garage



488 **Maker**
Object Wind sock
Medium Steel and fabric masts etc, with bar for lowering pole
Size cms
Condition
Notes
2017 Ailsa photo 1010244 & 45
796

17. Outdoors: General
 1890s

Location Outside, by garden West



- 489** **Maker** Gary Miller **17. Outdoors: General**
Object Steps from Road to Q 2 **1890s**
Medium Wooden edges
Size cms
Condition
Notes Repaired by Garfy 2017 **Location** Outside, by garden West
2017 Ailsa photo 1010208
797



- 490** **Maker** Light Keepers **17. Outdoors: General**
Object Steps between tower and Q1
Medium
Size cms
Condition **Location** Tower Exterior
Notes Concrete by light keepers and regularly painted by Caretakers.
2017 Ailsa Photo P1010199,
808



- 491** **Maker** **17. Outdoors: General**
Object Helipad
Medium Concrete - painted
Size cms
Condition Poor **Location** Helipad
Notes Ailsa Photo P1010282
809



- 492** **Maker** **17. Outdoors: General**
Object Helipad old fuel store
Medium Old fuel tanks
Size cms
Condition Poor **Location** Helipad
Notes Soon to be removed
810 Ailsa Photo P1010283, 284



- 493** **Maker** 17. Outdoors: General
Object Helipad old fuel store
Medium Old Red box - possibly for telephone
Size cms
Condition Poor **Location** Helipad
Notes
 2017
 811



- 494** **Maker** Keepers 18. Buildings
Object Paint Shed, originally generator shed.
Medium Various materials
Size cms Windows: 146 x 94
Condition **Location** Track: near paint shed
Notes Objects inside - current. But shed is an example of a well kept but much adapted building - note steps out of place. The original sash windows are still on building.
 2013
 EDIT
 2017
 293 Second photo from Ailsa 2017 1000973



- 495** **Maker** Keepers 18. Buildings
Object Red Shed (fuel)
Medium Corrugated iron
Size cms
Condition **Location** Track: Top of hill near
Notes This is one of various buildings on the Island. Latterly this was used for fuel storage.
 2013
 302



- 496** **Maker** Keepers/Contractors 18. Buildings
Object Whim shed 1920
Medium Fibro and Wood
Size cms
Condition Fair **Location** Whim shed
Notes This shed was built to house the haulage diesel powered winch. When the original winch was replaced in the mid seventies they simply extended the front of the shed leaving the old mechanism at the back.
 2013
 307



497 Maker

18. Buildings

Object Stable 2005

Medium

Size cms

Condition

Notes

2013

432

Location Below helipad on track.

The remains of this building are being covered by vegetation. These 2005 photographs record it as it was then.



498 Maker

18. Buildings

Object Stable 2017

Medium

Size cms

Condition

Notes

2017

432

Location Below helipad on track.

The remains of this building are being covered by vegetation. These are new photos taken in 2017
Ailsa P 1010010, 11



499 Maker Ron Felhberg

18. Buildings

Object Verandah Q 2

2017

Medium

Size cms

Condition Good

Notes

2017

793

Location Outdoors track from

Repair work 2017
Ailsa photo 1010003 - 7



500 Maker

19. Geology

Object Rock sample

Medium Petrified ?

Size cms 18 x 13.5 x 9.5

Condition

Notes

2013

156

Location Museum Room Q 1

Big lumps of this rock came down with the landslide at Garney's Gap
26th April 2012.



501 Maker
 Object 3 Sheerwater eggs
 Medium Egg shells
 Size cms see ruler in photo
 Condition
 Notes
 2013
 105

20. Natural History

Location Museum Room Q 1



502 Maker
 Object Bird skull
 Medium Bone
 Size cms see ruler in photo
 Condition
 Notes
 2013
 106

20. Natural History

Location Museum Room Q 1



503 Maker Keepers & caretakers
 Object Bird bridges
 Medium Wooden (various recycled bits of timber)
 Size cms Various
 Condition Good
 Notes
 2013
 305

20. Natural History
1940

Location Track

These little bird bridges appear all along the track and give the birds a way over the culverts so that they do not break down the soil and block the drains as the go to their nests. This is not of intrinsic "value" but recording this contributes to a complete picture of the way of life on the Island.



504 Maker Weed Volunteers
 Object Lobster sculpture from Black Berry root
 Medium Black berry root from the Island
 Size cms 49 cm L x 15 cm H
 Condition Good
 Notes
 2013
 334

20. Natural History
2005?

Location Q 2

Made by weed volunteer and kept in Q2 as a reminder of all the work carried out to eradicate weeds. Frpm a trip with Albert Thompson digging out black berries with volunteers



- 505** **Maker** 20. Natural History
Object Mutton Bird Skull - no mandible **1970s**
Medium
Size cms Length 10 cms, width 4 cms, depth 3.2
Condition Bleached but good condition **Location** Museum with mutton
Notes Ailsa picture 584-6
2017 No record where found
697



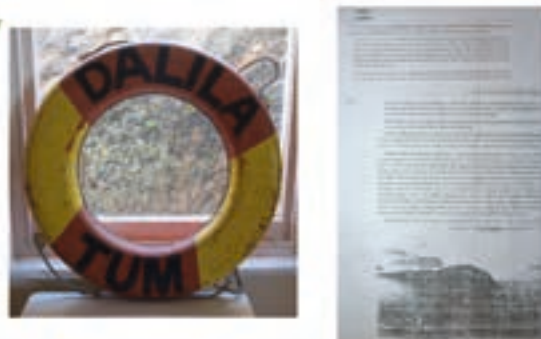
- 506** **Maker** 20. Natural History
Object Mutton bird egg **1890s?**
Medium Good condition (Garry cleaned out)
Size cms Length 7.5 x 5 diam
Condition Good **Location** Museum 3rd shelf
Notes Collected to demonstrate size of egg to visitors
2017 Ailsa picture 617-18
709



- 507** **Maker** 20. Natural History
Object Bird skull (with damaged mandible) **1890s?**
Medium bone, some feathers and part of eyes
Size cms Length 6.0 x 2 width
Condition Good **Location** Museum 3rd shelf
Notes Collected to demonstrate to visitors
2017 Ailsa picture 619-23
710



- 508** **Maker** 21. Island History
Object Life Ring from Dalila Tum
Medium Plastic with rope handles
Size cms Outer diam 77 cms , inner diam 45 cms 12. depth
Condition Fair **Location** Museum Room Q 1
Notes The fishing vessel Dalila dragged her anchor off Maatsuyker Island on the morning of 4 June 1984. Where she became a total loss. See printed paper
2013
140



- 509** **Maker** Keeper
Object Dog foot prints in concrete outside Q1
Medium Concrete
Size cms Area approx 14 x 10 cms - variable
Condition Location Q 1
Notes A keeper's dog - as no dogs on island since.
2013
287

21. Island History



- 510** **Maker** Keeper
Object Makers mark in concrete steps Q1
Medium Concrete
Size cms Area approx 28 x 38 variable
Condition Location Q 1
Notes OB & DC 89
2013
288

21. Island History



- 511** **Maker**
Object 4 loose leaf sets of records
Medium Paper and plastic folders
Size cms A4
Condition Fair Location Museum Room Q 1
Notes These could be checked to see if scanning is worthwhile
2013
257

22. Records



- 512** **Maker**
Object Record books
Medium Paper and binder folders
Size cms A4
Condition Fair Location Museum Room Q 1
Notes These could be checked to see if scanning is worthwhile
2013
258

22. Records



- 513** Maker 22. Records
 Object Weather Log: Jan 82 - August 85 (incomplete)
 Medium Book
 Size cms 30 x 21 x 2 approx
 Condition Worn Location Weather shed
 Notes It would be a good idea (but time consuming job) to scan these for digital storage.
 2013
 411



- 514** Maker 22. Records
 Object Weather Log: Sept. 88 - 31.7.97
 Medium Book
 Size cms 30 x 21 x 2 approx
 Condition Worn Location Weather shed
 Notes It would be a good idea (but time consuming job) to scan these for digital storage.
 2013
 412



- 515** Maker 22. Records
 Object Weather Log: Aug. 1970 - Dec. 31 1977
 Medium Book
 Size cms 30 x 21 x 2 approx
 Condition Worn Location Weather shed
 Notes It would be a good idea (but time consuming job) to scan these for digital storage.
 2013
 413



- 516** Maker 22. Records
 Object Weather Log: Aug. 1997 - September 2006
 Medium Book
 Size cms 30 x 21 x 2 approx
 Condition Worn Location Weather shed
 Notes It would be a good idea (but time consuming job) to scan these for digital storage.
 2013
 414



517 **Maker**
Object 2 broken oars, one with rowlock attached
Medium Wood
Size cms 1) 135.0 2) 162.5
Condition
Notes
 2013
 197

23. Flotsam

Location Museum Room Q 1



518 **Maker**
Object 7 parts of floaties
Medium Polystyrene
Size cms See Photo
Condition Poor
Notes Not worth keeping?
 2013
 238

23. Flotsam

Location Museum Room Q 1



519 **Maker**
Object One door latch from boat?
Medium Wood
Size cms See photo
Condition Poor
Notes Flotsam? or where was it found?
 2013
 242

23. Flotsam

Location Museum Room Q 1



520 **Maker**
Object Sea Anchor?
Medium Canvas and rope
Size cms
Condition Fair
Notes The objects in the workshop need to be fully catalogued.
 2013
 392

23. Flotsam

Location Workshop



- 521** **Maker** 24. Workshop objects
Object Tyre Pump
Medium Wood & metal
Size cms 50 cms full length x 3.7 diam of pump 23.7 handle x 4.5
Condition Location Museum Room Q 1
Notes Wooden handle does not look original - an example of repair carried out on the Island.
2013
157



- 522** **Maker** 24. Workshop objects
Object Tyre Pump
Medium Wood & metal
Size cms 50.5 cms full length x 3.5 diam of pump 18.0 handle x 2.5
Condition Base damaged Location Museum Room Q 1
Notes Original Wooden handle.
2013
158



- 523** **Maker** Protector Safety Pty Ltd 24. Workshop objects
Object Lens cleaning station with tin of lens cleaner anti fog solution
Medium Metal
Size cms 25 x 23.58 X 5.8
Condition Fair - shows rust Location Museum Room Q 1
Notes There is a set of these installed in the workshop/garage. Perhaps this set came from the generator room or battery room in Q1.
2013
177



- 524** **Maker** 24. Workshop objects
Object Group of Block and tackle hooks **Various**
Medium Metal
Size cms Various (10)
Condition Fair Location Workshop backroom
Notes The objects in the workshop need to be fully catalogued.
2013 This is a great group and it could be found that some are of historical interest.
EDIT
2017
390 See 2017 661 - 666



- 525** **Maker** 24. Workshop objects
Object Container of old nails **1920s?**
Medium Iron nails
Size cms 14 cms. approx. length
Condition Rusted **Location** Workshop
Notes The objects in the workshop need to be fully catalogued.
2013 These nails were either rescued from projects around the island
391 (possibly haulage way) or they may have always been spare nails.



- 526** **Maker** 24. Workshop objects
Object Lens cleaning station **1980s?**
Medium Metal
Size cms 25 x 23.58 X 5.8
Condition Fair **Location** Workshop
Notes The objects in the workshop need to be fully catalogued.
2013 This is the same as the one in the Museum - probably they were in
393 various positions on the Island.



- 527** **Maker** 24. Workshop objects
Object Wall showing various objects of various dates **Various**
Medium
Size cms
Condition Mostly still in use **Location** Workshop
Notes The objects in the workshop need to be fully catalogued.
2013 There are many objects here that are new, but there are older objects
394 still in use. The Culture to repair rather than replace being evident.



- 528** **Maker** 24. Workshop objects
Object Anvil **Resear**
Medium Cast iron
Size cms 31 x 84 x 13.7
Condition Good **Location** Workshop
Notes The objects in the workshop need to be fully catalogued.
2013
395



- 529** Maker
Object Garden Tools
Medium Various
Size cms Various
Condition Varied
Notes The objects in the workshop need to be fully catalogued.
2013 Many of the tools are still used. They need to be catalogued and
396 researched individually. One must assume that some could be old.

24. Workshop objects

Resear

Location Workshop



- 530** Maker
Object Shifter
Medium
Size cms 31 cms
Condition Fair - seized but oiled to slow
Notes Ailsa picture 441- 442
2017
643

24. Workshop objects

Location Workshop



- 531** Maker Bahco Sweden
Object Slide puller
Medium
Size cms 59 long cms
Condition Fair -
Notes Ailsa picture 444- 447
2017
644

24. Workshop objects

Location Workshop



- 532** Maker
Object 3 bale hooks
Medium Galvanised steel, one with wooden handle
Size cms 13 & 14 cms
Condition Fair - Very corroded - welded from
Notes Ailsa picture 448 & 449
2017
645

24. Workshop objects

Location Workshop



- 533** Maker 24. Workshop objects
 Object Tongs 1950
 Medium Steel
 Size cms 15cms
 Condition Very corroded - did have plastic or Location Workshop
 Notes Ailsa picture 450 & 451
 2017
 646



- 534** Maker 24. Workshop objects
 Object Work Bench
 Medium Oak
 Size cms Length 320cm; width: 75 at vice, 57 at bench; Height 80cms
 Condition Fair Location Workshop
 Notes Ailsa picture 452
 2017
 647



- 535** Maker 24. Workshop objects
 Object Vice
 Medium Turned wood (darker wood than oak of bench)
 Size cms Length 320cm; width: 75 at vice, 57 at bench; Height 80cms
 Condition Fair Location Workshop
 Notes Ailsa picture 452 759, 761
 2017
 648



- 536** Maker 24. Workshop objects
 Object Wood Plane 1940s
 Medium Turned wood (darker wood than oak of bench)
 Size cms Length 24cm; width: 6.5 Height 14.5cms
 Condition Fair Location Workshop
 Notes Ailsa picture 452
 2017
 649 Window sill Middle room



- 537** Maker 24. Workshop objects
 Object Timber float 1940s
 Medium Tas oak? --
 Size cms Length 28cm; width: 11cm Height 7 cms
 Condition Fair, worn Location Workshop
 Notes Ailsa picture 462 - 464
 2017
 650



- 538** Maker 24. Workshop objects
 Object Two bill hooks tools (1 with remains of handle and some 1940s
 Medium Steel? --
 Size cms Length 44cm;
 Condition Moderate corrosion Location Workshop
 Notes Ailsa picture 476 - 478
 2017
 651



- 539** Maker 24. Workshop objects
 Object Ceramic Insulators 1940s
 Medium Ceramic with brown glaze --
 Size cms Length 20cm; 4 cm diam
 Condition Good Location Workshop
 Notes Ailsa picture 479 - 480
 2017 Possibly for antennae wires
 652



- 540** Maker 24. Workshop objects
 Object Bridge Spikes (Many) 1940s
 Medium Steel --
 Size cms Length 20cm; - some 18cms cm
 Condition from new (unused) to very corroded Location Workshop
 Notes Ailsa picture 482
 2017
 653



- 541** **Maker** 24. Workshop objects
Object Turnbuckle
Medium Yellow painted, some corrosion
Size cms length 50 cms
Condition Fair - one end turns relatively freely **Location** Workshop - back room
Notes Ailsa picture 483
 2017
 655



- 542** **Maker** 24. Workshop objects
Object Eyelets for splicing into ropes and cables x 4
Medium Galvanised Steel
Size cms 1 @ 9.5x 6.5 x 2.2; 3@ 7 x 5 x 1.7
Condition good **Location** Workshop - back room
Notes Ailsa picture 484
 2017
 656



- 543** **Maker** 24. Workshop objects
Object Turnbuckles x 2
Medium Steel, some corrosion
Size cms length 33 cms + shackle
Condition Fair - some corrosion treated with **Location** Workshop - back room
Notes Ailsa picture 485
 2017
 657



- 544** **Maker** 24. Workshop objects
Object Turnbuckles x 3
Medium Steel, some corrosion
Size cms length 30 cms + eyelets
Condition Fair - some corrosion treated with **Location** Workshop - back room
Notes Ailsa picture 486
 2017
 658



- 545** Maker 24. Workshop objects
 Object Group of shackles
 Medium Steel, some corrosion
 Size cms Largest: length 15 cms x 13 x 5 (swl 45 ct) Smallest 11 x 9 x 4 (swl 15 ct)
 Condition Fair - some corrosion Location Workshop - back room
 Notes Ailsa picture 494
 2017
 659



- 546** Maker 24. Workshop objects
 Object Small pulley on galvanised wire cable
 Medium Steel, some corrosion
 Size cms 5 cm x 2.5 cm x 1.5; wire 70 cms
 Condition Fair - some corrosion Location Workshop - back room
 Notes Ailsa picture 495 - 98
 2017
 660



- 547** Maker 24. Workshop objects
 Object Block & double pulley with eye bolt
 Medium
 Size cms Length 42 cms x w 17cm d 8cms
 Condition Fair - one pulley jammed Location Workshop - back room
 Notes Ailsa picture 499- 501
 2017 Has improvised pin for bottom guides
 661



- 548** Maker 24. Workshop objects
 Object Block & double pulley with eye bolt
 Medium
 Size cms Length 43 cms x w 17cm d 8cms
 Condition Fair - both pulleys turn Location Workshop - back room
 Notes Ailsa picture 502- 504
 2017
 662



- 549** Maker 24. Workshop objects
 Object Block & single pulley with eye bolt & shackle
 Medium Casing - steel, corroded and bent, wheel brass.
 Size cms Block length 45 cms x w 19cm d 13cms
 Condition Damaged Location Workshop - back room
 Notes
 2017
 663



- 550** Maker 24. Workshop objects
 Object Block - single pulley with top eye bolt
 Medium Casing - steel, corroded and bent, wheel brass.
 Size cms Block length 40 cms (without shackle) x w 7.5 cm d 6.5cms
 Condition All functional Location Workshop - back room
 Notes Ailsa picture 508- 510
 2017 Has improvised pin for bottom guides
 664



- 551** Maker 24. Workshop objects
 Object Block - double pulley with top hook
 Medium Casing - steel
 Size cms Block length 50 cms x w 16.5 cm d 8.5cms
 Condition Both pullies turn Location Workshop - back room
 Notes Ailsa picture 511-513
 2017
 665



- 552** Maker 24. Workshop objects
 Object Block - double pulley with top hook
 Medium Casing - steel, corroded and bent, wheel brass.
 Size cms Block length 50 cms x w 7.5 cm d 8.5cms
 Condition Well oiled and functional - conditon Location Workshop - back room
 Notes Ailsa picture 514-517
 2017
 666



- 553** **Maker** 24. Workshop objects
Object Pocket balance
Medium Iron corroded
Size cms Length 25 cms x w 4 cm d 2.5 cms
Condition iron corroded, still functional **Location** Workshop - front room
Notes Ailsa picture 514-517
2017 Behind lower end of work bench
667



- 554** **Maker** 24. Workshop objects
Object Waste pipe for double trough, plubing fitting
Medium Brass
Size cms Length 22 cms x w 7.5 cm d 26.8 cms
Condition Good condition **Location** Workshop - front room
Notes Ailsa picture 544-546
2017
668



- 555** **Maker** Craig Searle ? 24. Workshop objects
Object Drain cleaning tool
Medium Handmade - natural wooden handle
Size cms Length 37 cms x w 9.5 cm
Condition Good condition **Location** Workshop - front room
Notes Ailsa picture 547
2017 Purpose shaped metal blade bolted into old trowel? hilt
669 Robyn M - most important tool for drains



- 556** **Maker** 24. Workshop objects
Object Iron Roller - used to hold door open
Medium Iron
Size cms Length 22.7 + pin total 25; Diam 14.5
Condition Corroded and beautiful - "sculptural" **Location** Workshop -
Notes Ailsa picture 695-7 & 714 - 715
2017 Pin on end has been ground off/broken, & bottom ground to re-purpose
670 the roller as a door stop. Marks on door suggest it has been used for
 some time



- 557** Maker REGA 24. Workshop objects
 Object Stirrup pump
 Medium IBrass for pump, Iron for foot plate Plastic tubing
 Size cms Length 78 cm (plunger depressed) 110 expended; hose 140 cm
 Condition Fair Location Workshop -
 Notes Ailsa picture 699-04
 2017 One foot plate at current location
 671



- 558** Maker 24. Workshop objects
 Object Measuring stick - for fuel in a 44 Gal drum on its side
 Medium Wood, Tas Oak
 Size cms Length 121.3, 2.2 x 2.3 section
 Condition Fair Location Workshop - Garage Front
 Notes Ailsa picture 705-09
 2017 Numbered 10 - 500 in 10s; 30.6cm - 0-100; 19.4cm- 120-200;
 672 17.3 cm 200-300; 18.8 cm -300-400; 23.8cm 400-500



- 559** Maker No Brand 24. Workshop objects
 Object Square 1940s -
 Medium Steel brass and wood
 Size cms Length 19.6, W 14.1 D.1.8
 Condition Fair Location Workshop - Garage Front
 Notes Ailsa picture 712-3
 2017
 673



- 560** Maker 24. Workshop objects
 Object Shovel
 Medium Galvanised steel and Wood with red painted section
 Size cms Length 100.5 W 25.5
 Condition Still in use - good condition Location Workshop - Garden tools
 Notes Ailsa picture 717-9
 2017
 674



- 561** **Maker** 24. Workshop objects
Object Shovel, long handle
Medium Galvanised steel and Wood with red painted section
Size cms Length 158.5 W 24.5
Condition Still in use - excellent condition **Location** Workshop - Garden tools
Notes Ailsa picture 720, 21,22
2017
675



- 562** **Maker** 24. Workshop objects
Object Shovel, long handle
Medium Galvanised steel and Wood with red painted section
Size cms Length 157. W 24.5
Condition Still in use - excellent condition **Location** Workshop - Garden tools
Notes Ailsa picture 724
2017
676



- 563** **Maker** 24. Workshop objects
Object Stone Hammer
Medium Galvanised steel and Wood with residual red paint and green
Size cms Length 91.5 W 22.7 cm Depth 4.7
Condition Still in use - excellent condition **Location** Workshop - Garden tools
Notes Ailsa picture 726 - 7,
2017
677



- 564** **Maker** 24. Workshop objects
Object Mattock
Medium Galvanised steel and Wood with residual red paint and green
Size cms Length 91 W 34 cm
Condition Still in use - excellent condition **Location** Workshop - Garden tools
Notes Ailsa picture 728, 29, 30
2017
678



- 565** Maker 24. Workshop objects
 Object Adze (axe? handle held with screw)
 Medium Galvanised steel and Wood with residual red paint and green
 Size cms Length 76 W 26.5 cm depthe 10.5
 Condition Still in use - excellent condition (has Location Workshop - Garden tools
 Notes Ailsa picture 732, 33, 34
 2017
 679



- 566** Maker 24. Workshop objects
 Object Axe
 Medium Galvanised steel and Wood with residual red paint and green
 Size cms Length 78.5 W 16.4 cm depthe 10.5
 Condition Still in use - excellent condition Fair; Location Workshop - Garden tools
 Notes Ailsa picture 736, 33, 34
 2017
 680



- 567** Maker 24. Workshop objects
 Object Mattock
 Medium Galvanised steel and Wood with residual red paint and green
 Size cms Length 92 W 34 cm
 Condition Still in use - excellent condition Location Workshop - Garden tools
 Notes Ailsa picture 738, 39, 40
 2017 Scratched on handle W21 = 2 DST (dept of Shipping and Transport)
 681 CLS Commonwealth Lighthouse service



- 568** Maker 24. Workshop objects
 Object Pick
 Medium Galvanised steel and Wood with residual red paint and green on handle
 Size cms Length 92 W 58 cm
 Condition Still in use - good condition, trace of Location Workshop - Garden tools
 Notes Ailsa picture 741, 42, 43
 2017 The head of this may be forged and so quite old.
 682 Thick pick and handle - recent "marriage"



- 569** **Maker** 24. Workshop objects
Object Pick
Medium Galvanised steel and Wood with lots of red paint and green on handle
Size cms Length 92 W 59 cm
Condition Still in use - good condition, trace of **Location** Workshop - Garden tools
Notes Ailsa picture 744, 45, 46, 47
2017
683 Handle quite new in comparison to head
 Head probably hand forged



- 570** **Maker** 24. Workshop objects
Object Mattock
Medium Galvanised steel and Wood with lots of red paint and green on handle
Size cms Length 87 W 26 cm
Condition Still in use - good condition **Location** Workshop - Garden tools
Notes Ailsa picture 749, 50
2017
684 Used for cleaning drains



- 571** **Maker** S England 24. Workshop objects
Object Two spades - broken handles
Medium Galvanised steel
Size cms Length 51 W 19 cm
Condition Poor condition **Location** Workshop - Garden tools
Notes Ailsa picture 751,
2017
685



- 572** **Maker** 24. Workshop objects
Object Two spades - broken handles
Medium Galvanised steel
Size cms Length 51 W 19 cm
Condition Poor condition **Location** Workshop - Garden tools
Notes Ailsa picture 751,- 54
2017
686



- 573** Maker 24. Workshop objects
 Object Three fern hooks - bill hooks
 Medium Galvanised steel
 Size cms
 Condition Good condition Location Workshop - Garden tools
 Notes Ailsa picture 755,- 54
 2017 Oldish abd useful befxore brush cutters
 687



- 574** Maker 24. Workshop objects
 Object Mystery Item Measure for fuel? lawnmowers?
 Medium Galvanised steel
 Size cms
 Condition Good condition Location Workshop - Garden tools
 Notes Ailsa picture 762
 2017 Oldish abd useful befxore brush cutters
 688



- 575** Maker 24. Workshop objects
 Object Adjustable wrench
 Medium Galvanised steel
 Size cms Length 36 cm at current setting;w 7 cm, 4 at bold
 Condition Good condition; oiled and in use Location Workshop - Garden tools
 Notes Ailsa picture 763
 2017 Oldish abd useful befxore brush cutters
 689



- 576** Maker 24. Workshop objects
 Object Keepers
 Object Tray top wheel barrow
 Medium Wood and mixed media
 Size cms length 160 width 64 cm height 40 cm
 Condition Wooden frame OK, metal legs Location Outside workshop
 Notes Ailsa picture 274, 275, 276, 277, 538
 2017 Behind brickette shed shed
 691 Tyre OK for re-use



577 Maker 24. Workshop objects

Object Auger bit
 Medium Steel
 Size cms 60 cms
 Condition Rusted but solid, not so old
 Notes Ailsa picture 012
 2017
 721

Location Workshop

**578** Maker 24. Workshop objects

Object Adjustable spanner
 Medium Steel
 Size cms 26 x 10 cms
 Condition Steel, some white paint, oiled and
 Notes Ailsa picture 013
 2017
 722

Location Workshop

**579** Maker 24. Workshop objects

Object 2 Seats working on tower
 Medium Wood coir rope, galvanised eyelets
 Size cms 53 x 24 cms
 Condition Good, as new
 Notes Ailsa picture 0116-21
 2017
 723

Location Workshop - Middle room

**580** Maker 24. Workshop objects

Object Auger Bit
 Medium Steel, new dowel in top
 Size cms 130 cms
 Condition Steel, Rust, quite old
 Notes Ailsa picture 0134-38
 2017
 724

Location Workshop - Garage Front



581 Maker
 Object Crow Bar Pinck bar
 Medium Cast iron?
 Size cms 156 x 3.2 cms
 Condition Very heavy and corroded
 Notes Ailsa picture 1010039-43
 2017
 725

24. Workshop objects

Location Workshop - Garage Front



582 Maker
 Object Improvised tool
 Medium Square steel iron plate, pipe handle held by bolt.
 Size cms Length 158 cms Plate 17.5 cms
 Condition Newish
 Notes Ailsa picture 1010044-48
 2017
 726

24. Workshop objects

Location Workshop - Garage Front



583 Maker
 Object Improvised tool (Lifting something into place?)
 Medium Wood dowel handle
 Size cms Length 133 but has broken off - probably longer
 Condition Newish
 Notes Ailsa picture 1010049-53
 2017
 727

24. Workshop objects

Location Workshop - Garage Front



584 Maker
 Object Speed limit sign
 Medium Metal with re-cycled handle
 Size cms
 Condition Green paint traces on it
 Notes Ailsa picture 1010054
 2017
 728
 From elsewhere

24. Workshop objects

Location Workshop - Garage



585 Maker **DAWN**
 Object **Vice on saw horse**
 Medium **steel**
 Size cms **26 x 8 x height 11.5**
 Condition **White paint traces on it**
 Notes **Ailsa picture 1010054-56**
 2017
 729

24. Workshop objects

Location Workshop - Middle room



586 Maker **4MQA**
 Object **Vice on work bench**
 Medium **steel**
 Size cms
 Condition **Red paint traces on it Newish**
 Notes **Ailsa picture 1010057**
 2017
 730

24. Workshop objects

Location Workshop



587 Maker **SMH D D**
 Object **Plyers**
 Medium **Steel**
 Size cms
 Condition **Good well oiled, trace of high vis**
 Notes **Ailsa picture 1010058-59**
 2017
 731

24. Workshop objects

Location Workshop - Middle room



588 Maker
 Object **Padlock See 306**
 Medium **Steel**
 Size cms
 Condition **In parts**
 Notes **Ailsa picture 1010146-48**
 2017
 732

24. Workshop objects

Location Workshop

These locks were unique and at one stage used at Whim shed - only one key which was remade 2013?
 2017 Ailsa picture 1010146, 7, 8



- 589** **Maker** 24. Workshop objects
Object Emergency Assembly notice for workshop **1990**
Medium
Size cms
Condition Location Workshop - Garage
Notes
2017 Ailsa photo 1010033
776



- 590** **Maker** J. Rabone & sons, Birmingham England 24. Workshop objects
Object Spirit level
Medium Wood and brass
Size cms
Condition Fair, still used Location Workshop
Notes Ailsa Photo P1010123,226
2017
812



- 591** **Maker** 24. Workshop objects
Object Boxes for screws and fittings etc
Medium
Size cms
Condition Location Workshop - back room
Notes Ailsa Photo P100465, 466. 468
2017
813



- 592** **Maker** 24. Workshop objects
Object Boxes for screws and fittings with names for machines
Medium
Size cms
Condition Location Workshop - back room
Notes Ailsa Photo P1000778, 780
2017 Machines on Maat have been given names over the years - boxes of bits for the different machines defined by name rather than type.
814



593 Maker
 Object **3 well used oil containers**
 Medium **Steel**
 Size cms
 Condition **All still in use**
 Notes **Ailsa Photo P1000766, 767. 468**
 2017
 815

24. Workshop objects

Location Workshop - front room



594 Maker
 Object **Bakelite phone**
 Medium
 Size cms
 Condition **Fair - reasonable for age and**
 Notes **Ailsa Photo P1010220**
 2017
 816
 These phones were all around the Island for early island communications.

24. Workshop objects

Location Workshop - back room



595 Maker
 Object **In situ photo for garden tool storage**
 Medium
 Size cms
 Condition
 Notes
 2017
 817

24. Workshop objects

Location Workshop - front room



596 Maker
 Object **Variety of plumbing fittings**
 Medium
 Size cms
 Condition
 Notes **P1000555 Ailsa composed these into a Rosalie Gascoigne type artwork!**
 2017
 818

24. Workshop objects

Location Workshop



- 597** **Maker** AMSA 25. AMSA
Object Railing from "new" Beacon
Medium Aluminium
Size cms 120 h. approx. (not measured)
Condition Fair **Location** Whim shed
Notes We think this was removed from the new light beacon.
 In 2017 moved to Garden where it has become the "Rosemary Rotunda"
 2013
 EDIT
 2017
 420



- 598** **Maker** 26. Signs
Object Lighthouse direction sign
Medium Wood with painted lettering
Size cms 86 x 21 cms x 1.7 cms
Condition **Location** Museum Room Q 1
Notes
 2013
 141



- 599** **Maker** Peter Blackwell 26. Signs
Object Sign "Peter's Pumpkin Palace"
Medium Painted Wood sign
Size cms 17.5 tall 38 long 1.8 depth
Condition Fair **Location** Museum Room Q 1
Notes Peter Blackwell worked as a Light keeper on Maatsuyker Island and lived in Q 3. 29 July 1976 - 2 Dec. 1977. He painted the sign and attached it to the gate.
 2013
 147



- 600** **Maker** Gary Miller 26. Signs
Object Olympic dam sign (also known as the Olympic pool) 2008?
Medium Wooden sign
Size cms Sign: 60 x 15 x 4; Pole height: 90
Condition **Location** Track: near Olympic dam
Notes Made by recent caretaker.
 2013
 299



- 601** **Maker** 26. Signs
Object Sign 1950s?
Medium Wood, varnished and painted
Size cms 30 high x 9.5 x 1.6
Condition Good, varnished wood **Location** Q 3 By back door
Notes Ailsa photo 1000925 shows some deterioration
 2013
 EDIT
 2017
 345



- 602** **Maker** 26. Signs
Object Garden Sign pre
Medium Wood
Size cms 16 x 40 approx. (Guessed)
Condition Good **Location** Outside, by garden West
Notes Made by caretaker
 2013
 397
 Second picture shows sign in 2005 - either present one is repainted or the old one blew away.



- 603** **Maker** Gary Miller 26. Signs
Object Orchard sign 2010
Medium Wood
Size cms 15 x 31 approx. (Guessed)
Condition Good **Location** Outside, by Orchard
Notes Made by Gary Miller
 2013
 EDIT
 2017
 398



- 604** **Maker** Mark Raddatz & Nicki Barry 26. Signs
Object Direction for lost lids 2006
Medium Wood
Size cms 18 x 70 approx. (Guessed)
Condition Good **Location** Outside, by Orchard
Notes Made by caretaker. The rain water gauge lid is frequently blown into this spot.
 2013
 EDIT
 2017
 406



605 **Maker** Caretaker
Object Sign for Q2
Medium Wood, varnished and painted
Size cms 30 high x 9.5 x 1.6 approx
Condition fair, varnished wood
Notes
2017
784 Ailsa photo 1000932

26. Signs

Location Q 2 By back door



Maatsuyker Island Keepers' Tree: recorded 2013 & 2017



- 1 Maker 27. Signs: Keepers Tree
Object Keepers' Tree overall view 1964-2013

Medium
Size cms

Condition Fair

Notes These plaques have been placed on the 'Keepers Tree' which is located just off the track to the summit. They mark the times of 'Keepers' and 'caretakers' on the island. Each is made by the people shown.
2013
355



Location Outdoors - Keepers Tree

- 2 Maker 27. Signs: Keepers Tree
Object Tree as situated in 2017 1990

Medium
Size cms

Condition

Notes Ailsa photo 1000870, 2
2017
773



Location Outdoors - Keepers Tree

- 3 Maker 27. Signs: Keepers Tree
Object Tree stress in 2017 1990

Medium
Size cms

Condition

Notes Ailsa photo 1000866, 67, 68, 69
2017
774



Location Outdoors - Keepers Tree

- 4 **Maker** 27. Signs: Keepers Tree
Object Tree stress in 2017 **1990**

Medium

Size cms

Condition

Notes

2017 Ailsa photo 1000866, 67, 68, 69
 775



Location Outdoors - Keepers Tree

- 5 **Maker** Abbas, Horton 27. Signs: Keepers Tree
Object Sign: Bryony Horton and Nabil Abbas 05.02.06 - 05.06.06 **2006**

Medium Lead ? with electric cable ties.

Size cms 10 x 14 cms

Condition Good

Notes These plaques have been placed on the 'Keepers Tree' which is located just off the track to the summit. They mark the times of 'Keepers' and 'caretakers' on the island. Each is made by the people shown.

2013 EDIT
 2017 378
 2017 Ailsa photo 1000843, & 875



Location Outdoors - Keepers Tree

- 6 **Maker** Banks, Colin & Elaine & Sam 27. Signs: Keepers Tree
Object Plaque 19/5/76 -1/5/77 Sam (30/10/76) **1990**

Medium Lead

Size cms 23 x 28 cms

Condition Fair, reaction around nails

Notes These plaques have been placed on the 'Keepers Tree' which is located just off the track to the summit. They mark the times of 'Keepers' and 'caretakers' on the island. Each is made by the people shown.

2017 770
 Ailsa photo 1000839



Location Outdoors - Keepers Tree

- 7** **Maker** Barrett, Owen L, Clark, David B **27. Signs: Keepers Tree**
Object Sign: Maatsuyker island Centenary 1st June - 1991 **1991**
 Keepers: Owen L Barrett, David B Clark
Medium Stainless steel
Size cms 8 x 8 cms
Condition Good, very shiny - high in tree
Notes These plaques have been placed on the 'Keepers Tree' which is located just off the track to the summit. They mark the times of 'Keepers' and 'caretakers' on the island. Each is made by the people shown.
2013
EDIT
2017
368
Location Outdoors - Keepers Tree



- 8** **Maker** Blackwell, Peter **27. Signs: Keepers Tree**
Object Sign: many members of the Blackwell family including Gwen Egg and Marina Campbell **1968-2012**
Medium Lead on board
Size cms 30 x 23
Condition Fair - sap stain across middle
Notes These plaques have been placed on the 'Keepers Tree' which is located just off the track to the summit. They mark the times of 'Keepers' and 'caretakers' on the island. Each is made by the people shown.
2013
EDIT
2017
356
Location Outdoors - Keepers Tree



- 9** **Maker** Brent, E & Berends T. **27. Signs: Keepers Tree**
Object Sign: E. Brent, & T. Berends & A. Sculthorpe 1975 & 1976 **1975**
Medium Lead
Size cms 22 x 25 cms
Condition Fair, light stain
Notes These plaques have been placed on the 'Keepers Tree' which is located just off the track to the summit. They mark the times of 'Keepers' and 'caretakers' on the island. Each is made by the people shown.
2013
EDIT
2017
361
Location Outdoors - Keepers Tree



- 10 **Maker** Clarke, Steve **27. Signs: Keepers Tree**
Object Sign: Steve Clarke 22.9.78 **1978**

Medium Lead
Size cms 35 x 4.5
Condition Fair Not firmly attached 2017

Notes These plaques have been placed on the 'Keepers Tree' which is located just off the track to the summit. They mark the times of 'Keepers' and 'caretakers' on the island. Each is made by the people shown.
2013
362
 2017 Ailsa photo 1000847



Location Outdoors - Keepers Tree

- 11 **Maker** Cook, J. W. **27. Signs: Keepers Tree**
Object Sign: J. W. Cook & L. M. Cook 1971 - 1978 **1978**

Medium Galu over board Lead would not have rusted like this?
Size cms 22 x 14 cms
Condition Rusted, this was original; remade above

Notes These plaques have been placed on the 'Keepers Tree' which is located just off the track to the summit. They mark the times of 'Keepers' and 'caretakers' on the island. Each is made by the people shown.
2013
EDIT
2017
363
 Reported as unreadable in 2017



Location Outdoors - Keepers Tree

- 12 **Maker** Cook, J. W. **27. Signs: Keepers Tree**
Object Sign: J. W. Cook & L. M. Cook 1971 - 1978 **1978,**

Medium Lead over board
Size cms 26 x 15
Condition Good - this is likely to be a replacement sign installed 2012?

Notes These plaques have been placed on the 'Keepers Tree' which is located just off the track to the summit. They mark the times of 'Keepers' and 'caretakers' on the island. Each is made by the people shown.
2013
EDIT
2017
364
 2017 Ailsa Photo 1000835



Location Outdoors - Keepers Tree

- 13** **Maker** Courtney, Clark **27. Signs: Keepers Tree**
Object Sign: David & Diane, Damien Darren, Courtney Clark **1968-2012**
Medium Lead
Size cms 18 x 25 cms
Condition Fair
Notes These plaques have been placed on the 'Keepers Tree' which is located just off the track to the summit. They mark the times of 'Keepers' and 'caretakers' on the island. Each is made by the people shown.
2013
EDIT
2017
357
 Photo Ailsa 2017 1000826
Location Outdoors - Keepers Tree



- 14** **Maker** Eccles, Mick & Foster, Phillipa **27. Signs: Keepers Tree**
Object Plaque August 04 - January 05 **1990**
Medium Steel?
Size cms 27. x 18.5 cms
Condition Good
Notes These plaques have been placed on the 'Keepers Tree' which is located just off the track to the summit. They mark the times of 'Keepers' and 'caretakers' on the island. Each is made by the people shown.
2017
765
 Ailsa photo 1000818
Location Outdoors - Keepers Tree



- 15** **Maker** Ervin, Richard **27. Signs: Keepers Tree**
Object Plaque 1/05 - 2/06 **1990**
 Relief Caretaker
Medium Copper? rusting/reacting around nails
Size cms 7.6 x 14 cms
Condition Fair
Notes These plaques have been placed on the 'Keepers Tree' which is located just off the track to the summit. They mark the times of 'Keepers' and 'caretakers' on the island. Each is made by the people shown.
2017
769
 Ailsa photo 1000838
Location Outdoors - Keepers Tree



- 16** **Maker** Fairbrother, S Kay Lynette **27. Signs: Keepers Tree**
Object Sign: Lynette Kay & Scott Fairbrother, Volunteers Aug- **2001**
 Nov 2001

Medium Lead on ply

Size cms 9 x 8 cms

Condition Fragile

Notes These plaques have been placed on the 'Keepers Tree' which is located just off the track to the summit. They mark the times of 'Keepers' and 'caretakers' on the island. Each is made by the people shown.

2013
 EDIT
 2017
 372

2017 Ailsa photo 1000828



Location Outdoors - Keepers Tree

- 17** **Maker** Francombe, Kate & Bruce **27. Signs: Keepers Tree**
Object Plaque Feb - August 2014 & September **1990**

Medium Copper?

Size cms 14 x 7.3 cms

Condition Good

Notes These plaques have been placed on the 'Keepers Tree' which is located just off the track to the summit. They mark the times of 'Keepers' and 'caretakers' on the island. Each is made by the people shown.

2017
 763

Ailsa photo 1000813



Location Outdoors - Keepers Tree

- 18** **Maker** French, J & Karen **27. Signs: Keepers Tree**
Object Sign: French John, Karen & Matthew (5 mths) Aug-Nov **2000**
 2000 C'takers

Medium Lead and timber

Size cms 176 x 13.5

Condition Good

Notes These plaques have been placed on the 'Keepers Tree' which is located just off the track to the summit. They mark the times of 'Keepers' and 'caretakers' on the island. Each is made by the people shown.

2013
 EDIT
 2017
 371

Ailsa Photo 1000823



Location Outdoors - Keepers Tree

- 19** **Maker** Gittins A & Broome Anna **27. Signs: Keepers Tree**
Object Sign: Anna Broome, Adam Gittins 7 Aug. 12 - 18 Feb. **2013**
 13
Medium Stainless steel
Size cms circa 17 x 13
Condition Good
Notes These plaques have been placed on the 'Keepers Tree' which is located just off the track to the summit. They mark the times of 'Keepers' and 'caretakers' on the island. Each is made by the people shown.
2013
EDIT
2017
389
 Ailsa 2017 1000827



Location Outdoors - Keepers Tree

- 20** **Maker** Hocking, D. Abbot, D. Thiele J. **27. Signs: Keepers Tree**
Object Dianne Hocking, Dave Abbott & Jill Thiele(relative of Peter & Ken Blackwell)Nov. 13 - Feb. 6 2001 **2001**
Medium Lead over board
Size cms 10 x 14 cms
Condition Good
Notes These plaques have been placed on the 'Keepers Tree' which is located just off the track to the summit. They mark the times of 'Keepers' and 'caretakers' on the island. Each is made by the people shown.
2013
EDIT
2017
373
 2017 Ailsa photo 1000849



Location Outdoors - Keepers Tree

- 21** **Maker** Judd, Timms & Parnell **27. Signs: Keepers Tree**
Object Plaque 22.1.71 - 5.12.72 Judd, Harry, Audrey Helen; Timms Roger, Jan Parnell Barrie Elaine, **1990**
Medium Lead
Size cms 23 x 45 cms
Condition Fair
Notes These plaques have been placed on the 'Keepers Tree' which is located just off the track to the summit. They mark the times of 'Keepers' and 'caretakers' on the island. Each is made by the people shown.
2017
768
 Ailsa photo 1000837



Location Outdoors - Keepers Tree

- 22 **Maker** Kanitz, R & Simpson, Meryl **27. Signs: Keepers Tree**
Object Sign: Meryl Simpson and Roger Kanitz, Oct. 2011 - Feb. 2012 **2012**

Medium Stainless steel

Size cms 12 x 21 cms

Condition Good

Notes These plaques have been placed on the 'Keepers Tree' which is located just off the track to the summit. They mark the times of 'Keepers' and 'caretakers' on the island. Each is made by the people shown.

2013
 EDIT
 2017
 388
 2017 Ailsa photo 1000848



Location Outdoors - Keepers Tree

- 23 **Maker** Kentish, Judith **27. Signs: Keepers Tree**
Object Sign: Judith Kentish Artist Aug. - Sept. 2010 **2010**

Medium Steel ?

Size cms 12.5 x 9 cms

Condition Good by 2017 the tree has covered all edges

Notes These plaques have been placed on the 'Keepers Tree' which is located just off the track to the summit. They mark the times of 'Keepers' and 'caretakers' on the island. Each is made by the people shown.

2013
 EDIT
 2017
 384
 2017 Ailsa photo 1000859



Location Outdoors - Keepers Tree

- 24 **Maker** Konkes, C & Pigott Katie **27. Signs: Keepers Tree**
Object Sign: Chris Konkes & Katie Pigott; May - Nov. 1999 **1999**

Medium Lead

Size cms 20 x 16 cms

Condition Fair, brown stains

Notes These plaques have been placed on the 'Keepers Tree' which is located just off the track to the summit. They mark the times of 'Keepers' and 'caretakers' on the island. Each is made by the people shown.

2013
 EDIT
 2017
 370



Location Outdoors - Keepers Tree

- 25** **Maker** Launceston walking Club **27. Signs: Keepers Tree**
Object Sign: Launceston Walking Club Film Trip 28 Dec., 1975 - 5th Jan 1976 **1975**
Medium Soft lead
Size cms 40? x 23 cms
Condition Fair by 2017 the plate is more bent in the joint of the tree.
Notes These plaques have been placed on the 'Keepers Tree' which is located just off the track to the summit. They mark the times of 'Keepers' and 'caretakers' on the island. Each is made by the people shown.
2013
EDIT
2017
360
 2017 Ailsa photo 1000860



Location Outdoors - Keepers Tree

- 26** **Maker** Levings, Adrian **27. Signs: Keepers Tree**
Object Adrian Levings 01.04.94 - 02.05/94 **1994**
Medium Copper?
Size cms 17 x20 cms
Condition Good
Notes These plaques have been placed on the 'Keepers Tree' which is located just off the track to the summit. They mark the times of 'Keepers' and 'caretakers' on the island. Each is made by the people shown.
2013
EDIT
2017
369
 2017 Ailsa photo 1000851



Location Outdoors - Keepers Tree

- 27** **Maker** Miller, Gary **27. Signs: Keepers Tree**
Object Sign: Robyn Mundy, Gary Miller Oct. 10 - Feb. 11 **2011**
Medium Aluminium
Size cms Plaque :13 x 17.5 Lighthouse 15.5 height
Condition Good
Notes These plaques have been placed on the 'Keepers Tree' which is located just off the track to the summit. They mark the times of 'Keepers' and 'caretakers' on the island. Each is made by the people shown. Second stay added Sep 16 - Mar 17
2013
EDIT
2017
386
 Ailsa 1000808.



Location Outdoors - Keepers Tree

- 28 **Maker** Milne, Wendy & David Milne **27. Signs: Keepers Tree**
Object September 2014 - AMarch 2015 **1990**

Medium Aluminium
Size cms 17.5 x 10 cms
Condition Good

Notes These plaques have been placed on the 'Keepers Tree' which is located just off the track to the summit. They mark the times of 'Keepers' and 'caretakers' on the island. Each is made by the people shown.
2017
764
 Ailsa photo 1000813



Location Outdoors - Keepers Tree

- 29 **Maker** Murray, Pamela & Lemon, Mick **27. Signs: Keepers Tree**
Object Plaque 5/2/07 - 4/6/07 **1990**

Medium Lead
Size cms 13 x 7.5 cms
Condition Good

Notes These plaques have been placed on the 'Keepers Tree' which is located just off the track to the summit. They mark the times of 'Keepers' and 'caretakers' on the island. Each is made by the people shown.
2017
762
 Ailsa photo 1000813



Location Outdoors - Keepers Tree

- 30 **Maker** Nicholson, David & Mary **27. Signs: Keepers Tree**
Object Plaque August 13 - February 14 **1990**

Medium Aluminium
Size cms 24 x 15 cms
Condition Good

Notes These plaques have been placed on the 'Keepers Tree' which is located just off the track to the summit. They mark the times of 'Keepers' and 'caretakers' on the island. Each is made by the people shown.
2017
761
 Ailsa photo 1000812



Location Outdoors - Keepers Tree

- 31 **Maker** Parkinson , Rachael and Snell, Griff **27. Signs: Keepers Tree**
Object Plaque October 07; - Feb 08 **1990**

Medium Aluminium ?
Size cms 18. x 9 cms
Condition Fair - could get blown off

Notes These plaques have been placed on the 'Keepers Tree' which is located just off the track to the summit. They mark the times of 'Keepers' and 'caretakers' on the island. Each is made by the people shown.
2017 Ailsa photo 1000829
767



Location Outdoors - Keepers Tree

- 32 **Maker** Parsey **27. Signs: Keepers Tree**
Object Sign: Parsey Family returned Holiday 15.8.80 **1980**

Medium Lead
Size cms 6 x 12 cms
Condition Fair - parts hard to read

Notes These plaques have been placed on the 'Keepers Tree' which is located just off the track to the summit. They mark the times of 'Keepers' and 'caretakers' on the island. Each is made by the people shown.
2013 Ailsa photo 2017 1000845 & 863
EDIT
2017
365



Location Outdoors - Keepers Tree

- 33 **Maker** Parsey, Tony & Robyn **27. Signs: Keepers Tree**
Object Sign: Parsey Tony & Robyn, Craig & Emma 28.3.73 - 19.4.75 **1973**

Medium Lead on board
Size cms 18 x 25
Condition Good

Notes These plaques have been placed on the 'Keepers Tree' which is located just off the track to the summit. They mark the times of 'Keepers' and 'caretakers' on the island. Each is made by the people shown.
2013 Ailsa photo 1000888
EDIT
2017
359



Location Outdoors - Keepers Tree

- 34** **Maker** Parsey, Tony English, Jim **27. Signs: Keepers Tree**
Object Sign: Tony Parsey, Jim English 10/15 2 1990 **1990**

Medium Lead
Size cms 10 x 12 cms
Condition Fair

Notes These plaques have been placed on the 'Keepers Tree' which is located just off the track to the summit. They mark the times of 'Keepers' and 'caretakers' on the island. Each is made by the people shown.

2013
EDIT
2017
366
 2017 Ailsa photo 1000850



Location Outdoors - Keepers Tree

- 35** **Maker** Paul (Richardson) and Amanda Walker **27. Signs: Keepers Tree**
Object Plaque 2015 **2015**

Medium Lead ?
Size cms 9 x 14 circa
Condition Good

Notes These plaques have been placed on the 'Keepers Tree' which is located just off the track to the summit. They mark the times of 'Keepers' and 'caretakers' on the island. Each is made by the people shown.

2017
772
 Ailsa photo 1000853, 2



Location Outdoors - Keepers Tree

- 36** **Maker** Raddatz, M. Barry, Nicky **27. Signs: Keepers Tree**
Object Sign: Nicky Barry; Mark Raddatz 20th May - 3rd October **2011**
 2011, Volunteer Caretakers

Medium Aluminium
Size cms 18 x 10.05
Condition Good

Notes These plaques have been placed on the 'Keepers Tree' which is located just off the track to the summit. They mark the times of 'Keepers' and 'caretakers' on the island. Each is made by the people shown.

2013
EDIT
2017
387
 Ailsa Photo 1000821



Location Outdoors - Keepers Tree

- 37** **Maker** Reid, Phillip & Brady, Ailsa **27. Signs: Keepers Tree**
Object Sign: Ailsa Brady, Phillip Reid, Caretakers 4 June - 1 Oct. 2007 **2007**
Medium Lead
Size cms 19.5 x 16 cms
Condition Fair, brown stains
Notes These plaques have been placed on the 'Keepers Tree' which is located just off the track to the summit. They mark the times of 'Keepers' and 'caretakers' on the island. Each is made by the people shown.
2013
EDIT
2017
379



Location Outdoors - Keepers Tree

- 38** **Maker** Searle, Craig & Debbie **27. Signs: Keepers Tree**
Object Sign: Craig & Debbie Searle June - Sept. 2010 Feb - Aug 2013 addition **2010**
Medium Aluminium
Size cms 16 x 13 total
Condition Good
Notes These plaques have been placed on the 'Keepers Tree' which is located just off the track to the summit. They mark the times of 'Keepers' and 'caretakers' on the island. Each is made by the people shown.
2013
EDIT
2017
385
 2017 Ailsa photo 1000810 & 885



Location Outdoors - Keepers Tree

- 39** **Maker** St. Leger, B & M **27. Signs: Keepers Tree**
Object Sign: Marcelle, Bill St Leger 4/10/05 - 28/12/05; 15/1/06 - 6/2/06 **2005**
Medium Iron
Size cms 19 x 6.5 cms
Condition Good
Notes These plaques have been placed on the 'Keepers Tree' which is located just off the track to the summit. They mark the times of 'Keepers' and 'caretakers' on the island. Each is made by the people shown.
2013
EDIT
2017
376
 2017 Ailsa photo 1000857



Location Outdoors - Keepers Tree

- 40 **Maker** Stennetts, Martin, Leanne, Alex & Olivia 27. Signs: Keepers Tree
Object Plaque Autumn 2011; Martin (45) Leanne (40) 1990
 Alex (10) Olivia (8)

Medium Laser on board

Size cms 29. x 13 cms

Condition Good

Notes These plaques have been placed on the 'Keepers Tree' which is located just off the track to the summit. They mark the times of 'Keepers' and 'caretakers' on the island. Each is made by the people shown. Deb & Craig Searle installed 2013
 2017
 766
 Ailsa photo 1000819



Location Outdoors - Keepers Tree

- 41 **Maker** Tad, & Suzy 27. Signs: Keepers Tree
Object Sign: Tad & Suzy Oct. 08 - Feb. 08 2008

Medium Aluminium

Size cms 15 x 21

Condition Good

Notes These plaques have been placed on the 'Keepers Tree' which is located just off the track to the summit. They mark the times of 'Keepers' and 'caretakers' on the island. Each is made by the people shown.
 2013
 EDIT
 2017
 380
 @017 Ailsa photo 1000831



Location Outdoors - Keepers Tree

- 42 **Maker** Thompson, Albert 27. Signs: Keepers Tree
Object Albert Thompson 27-4-1990 / 15-10-1990 1990

Medium Steel ?

Size cms 10 x 16 cms

Condition Good

Notes These plaques have been placed on the 'Keepers Tree' which is located just off the track to the summit. They mark the times of 'Keepers' and 'caretakers' on the island. Each is made by the people shown.
 2013
 EDIT
 2017
 367
 2017 Ailsa photo 1000865



Location Outdoors - Keepers Tree

- 43 **Maker** Unknown 27. Signs: Keepers Tree
Object Remnant of plaque found by Keeper's Tree

Medium Plywood with varnish

Size cms 8.0 Variable x 9 cms

Condition Very frail

Notes an 82 and G L .. KEEPE.. VIC can be deciphered

2013

148 This piece is in the Museum



Location Museum Room Q 1

- 44 **Maker** Walker, J & L 27. Signs: Keepers Tree
Object Sign: John & Lorraine Walker Feb. 2009 - June 2009 2009

Medium Steel

Size cms

Condition Good

Notes These plaques have been placed on the 'Keepers Tree' which is located just off the track to the summit. They mark the times of 'Keepers' and 'caretakers' on the island. Each is made by the people shown.

Ailsa Photo 1000830

Location Outdoors - Keepers Tree



- 45 **Maker** Walsh, Trevor & Annette 27. Signs: Keepers Tree
Object Trevor & Annette Walsh, 2 June - 29 Sept. 08; 9 Oct. 09 - 8 Feb. 10 and September 2014 - March 2015 2009

Medium Lead

Size cms 18.5 x 10

Condition Fair, small rust stain. Cleaned by 2017

Notes These plaques have been placed on the 'Keepers Tree' which is located just off the track to the summit. They mark the times of 'Keepers' and 'caretakers' on the island. Each is made by the people shown.

Ailsa photo 1000817

Location Outdoors - Keepers Tree



- 46 **Maker** Weetman, Nick, Cameron, Rosanna **27. Signs: Keepers Tree**
Object Sign: Nick Weetman & Rosanna Cameron February 2005 - May 2005

Medium Copper

Size cms 19 x 7.5 cms

Condition Fair, good green patina developing

Notes These plaques have been placed on the 'Keepers Tree' which is located just off the track to the summit. They mark the times of 'Keepers' and 'caretakers' on the island. Each is made by the people shown.

2013
 EDIT
 2017
 375
 2017 Ailsa photo 1000874



Location Outdoors - Keepers Tree

- 47 **Maker** Weldon D. Barry, D. **27. Signs: Keepers Tree**
Object Sign: Weldon, Douglas, Daphne Barry (12 Corinth Street Howrah ?) 1971

Medium Lead

Size cms 18 x 16 cms

Condition Fair, parts obscured

Notes These plaques have been placed on the 'Keepers Tree' which is located just off the track to the summit. They mark the times of 'Keepers' and 'caretakers' on the island. Each is made by the people shown.

2013
 EDIT
 2017
 358
 2017 Ailsa photo 1000846



Location Outdoors - Keepers Tree

- 48 **Maker** Wills, R & Scott F **27. Signs: Keepers Tree**
Object Sign: Rob Wills Fiona Scott Aug. 2003 to Feb. 2004 2004

Medium Lead

Size cms 28 x 19 cms

Condition Good

Notes These plaques have been placed on the 'Keepers Tree' which is located just off the track to the summit. They mark the times of 'Keepers' and 'caretakers' on the island. Each is made by the people shown.

2013
 EDIT
 2017
 374
 2017 Ailsa 1000842



Location Outdoors - Keepers Tree

- 49 **Maker** Wiltshire, A ; Hamilton, Sheryl **27. Signs: Keepers Tree**
Object Sign: Al Wiltshire & Sheryl Hamilton Jonah(7) & Evie(4) **2010**
 Feb-May 2010
Medium Lead and timber
Size cms 19 x 13
Condition Good
Notes These plaques have been placed on the 'Keepers Tree' which is located just off the track to the summit. They mark the times of 'Keepers' and 'caretakers' on the island. Each is made by the people shown.
 2013
 EDIT
 2017
 383
 Ailsa photo 1000822



Location Outdoors - Keepers Tree

- 50 **Maker** Woolmer, P & Buller, L **27. Signs: Keepers Tree**
Object Louise Buller + Paul Woolmer 6th June - 10th October 2005 **2005**
Medium Aluminium
Size cms 17 x 13
Condition Good
Notes These plaques have been placed on the 'Keepers Tree' which is located just off the track to the summit. They mark the times of 'Keepers' and 'caretakers' on the island. Each is made by the people shown.
 2013
 EDIT
 2017
 377
 Ailsa Photo 1000820



Location Outdoors - Keepers Tree

