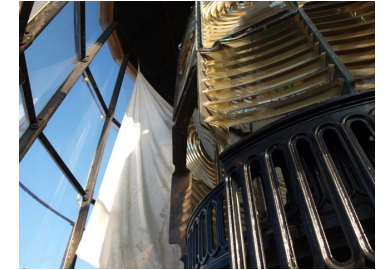
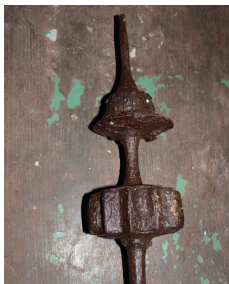
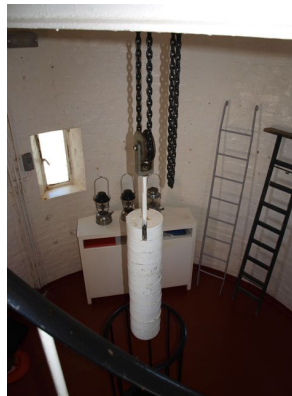


Catalogue of Objects on



Maatsuyker Island

Part 1 - 2013



FOMI (Friends of Maatsuyker Island)

Catalogue of Objects on Maatsuyker Island 2013
for
FOMI (Friends of Maatsuyker Island)

Introduction:

It is acknowledged in the Tasmanian Heritage Register that: “Maatsuyker Island Light station, built in 1891, is of historic heritage significance because it represents the principal characteristics of a group of Late Victorian Lightstation Buildings, including the remains of a rare supply haulage system and unusually intact lighthouse”.

In 2008 FOMI compiled an archive of photographs from John Cook, a lighthouse keeper in Tasmania for almost 25 years. Since then FOMI hoped to add to this project. The group has been aware of the multitude of objects of varying types and interests on the Island and in order to plan appropriate preservation and interpretation strategies, it was decided they must first be fully recorded.

This is the first volume and includes over 432 records comprising around 65% of the objects to be recorded. The objects range in type from objects in the tower, relating to the Chance Brothers tower fittings and the remains of the haulageway, to objects of a more domestic nature from the everyday life of the Keepers and their families. Because of the remoteness of the Island it was difficult to procure new items and dispose of old. There are many items displaying the improvisation, adaptation and re-use that were therefore necessary.

This Pdf is a part of a larger electronic data document. More information will be added as it becomes available. It is hoped that public access will arouse interest and attract further information. If anyone feels they have information to add relating to objects displayed please contact FOMI or Rosanna Cameron (rcameron@tassie.net.au)

Acknowledgement:

The Friends of Maatsuyker Island (FOMI) a sub-branch of Wildcare Inc., kindly thank the Australian National Maritime Museum and the Australian Government through the Maritime Museums of Australia Project Support Scheme (MMAPSS) for their collaborative support and Wildcare for its financial support for transport to the Island. The catalogue and design has been compiled by Rosanna Cameron with assistance on the Island from Anne Piesse and administrative support from Marina Campbell (president FOMI) and Derek Inglis (treasurer FOMI).

Copyright:

This document and the photos herein are copyright. They may not be displayed, made public or used outside the context of the document. Any reproduction, duplication or public use of the material must first be sanctioned by FOMI, Rosanna Cameron or representative.

- 001 **Maker** Chance Brothers **01.Tower: Prisms**
Object Prisms/Fresnel Lens, catadioptric prism top section **1890s**
Medium Glass crystal 548 prisms
Size cms Full height?
Condition
Notes These prisms are mounted on a clockwork mechanism. Later models were on a Mercury bath. Picture 4 John Cook lighting lamp. This image is copyright to John Cook. These could be detailed more in the future.
Location Tower, Top [More work Rqd.](#) YES more info



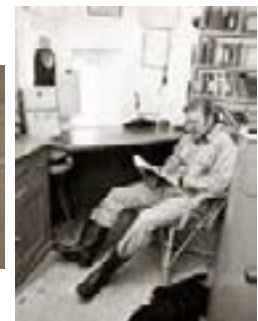
- 002 **Maker** Chance Brothers **02.Tower: Mechanism**
Object Clockwork mechanism in metal and glass cabinet **1890s**
Medium brass etc.
Size cms 138.6h x 123 x 123
Condition Working order
Notes For turning prisms - There could be many more photos and breakdown of this machinery when more time is available
Location Tower: Third floor [More work Rqd.](#) YES more info



- 029 **Maker** Chance Brothers **02.Tower: Mechanism**
Object Handle for weights
Medium
Size cms Arm 43.2 lower 22.5 handle 28.7 to join to arm
Condition Good
Notes Handle for winding up the weights which operate the mechanism
Location Tower: Third floor [More work Rqd.](#) more info



- 043 **Maker** Chance Brothers **02.Tower: Mechanism**
Object Case enclosing chain for weights **1890s**
Medium Metal painted black
Size cms Estimate: 108.5 h x 52. 5 diam.
Condition Good
Notes On the second floor there is a railing on the third this more covered protection. The picture showing the Keeper John Cook on the same floor of the tower is copyright to John Cook.
Location Tower, second floor (Original Lounge) [More work Rqd.](#) more info



- 050 **Maker** Chance Brothers **02.Tower: Mechanism**
Object Clockwork mechanism with weights for light rotation **1890s**
Medium Metal chain with weights and railing
Size cms From wheel to base of weights 134 cms., diam. of weights 19.5.
Condition Working order
Notes Overall length of weights 88 cms.
 This was the original radio/lounge room in JC's photos
- Location** Tower, First floor (original radio room) [More work Rqd.](#) [more info](#)



- 051 **Maker** Chance Brothers **02.Tower: Mechanism**
Object Weights, 11 in situ painted with white enamel paint **1890s**
Medium Weights iron + lead?
Size cms 7.5 x 19.5 diam each
Condition Working order
Notes Total weight: 352 lbs. (159 kg). Part of original tower mechanism exported from UK This was the original radio room in JC's photos
- Location** Tower, First floor (original radio room) [More work Rqd.](#) [more info](#)



- 052 **Maker** Chance Brothers **02.Tower: Mechanism**
Object Spare weights (3) **1890s**
Medium Iron with lead
Size cms Height 75 x 19 diam
Condition Working order
Notes Part of original tower mechanism exported from UK
 This was the original radio room in JC's photos
- Location** Tower, First floor (original radio room) [More work Rqd.](#) [more info](#)



- 053 **Maker** Chance Brothers **02.Tower: Mechanism**
Object Smaller weight **1890s**
Medium Iron with lead
Size cms 5 cms height x 15 cm diam
Condition Working order
Notes Part of original tower mechanism exported from UK
 This was the original radio room in JC's photos
- Location** Tower, First floor (original radio room) [More work Rqd.](#) [more info](#)



- 054 **Maker** Chance Brothers **02.Tower: Mechanism**
Object Railing for Mechanism **1890s**
Medium Iron painted with black enamel paint, 10 uprights, convex round top
Size cms 108.5 h x 52. 5 diam
Condition Working order
Notes Part of original tower mechanism exported from UK. This was the original radio room in JC's photos it had wire around it in 1977. This image is copyright to John Cook.
- Location** Tower, First floor (original radio room) [More work Rqd.](#) [more info](#)



- 055 **Maker** Chance Brothers **02.Tower: Mechanism**
Object 12 brass clasps with threaded pin foot and wing nuts **1890s**
Medium Brass ? (copper)
Size cms 16.5 Length to head of pin; foot 7 cms x 2 cms wide x 0.8 mm.
Condition Good
Notes Wing nut 5.8 x 6.8. These appear to be intricately made parts from the mechanism - they are either alternative parts or spare?
- Location** Tower, First floor (original radio room) [More work Rqd.](#) ask JC [more info](#)



- 056 **Maker** Chance Brothers **02.Tower: Mechanism**
Object Nuts and bolts for ? **1890s**
Medium Brass ? (copper)
Size cms 12 cm overall; base 6.5 x 6.3 2.5
Condition Good
Notes These appear to be intricately made parts from the mechanism - they are either alternative parts or spare?
- Location** Tower, First floor (original radio room) [More work Rqd.](#) ask JC [more info](#)



- 004 **Maker** Chance Brothers? UK, part of original fittings **03.Tower: parts**
Object Vent 1 by phone **1890s**
Medium Brass
Size cms 24 diam , 4 cm deep with knob
Condition Fair, tarnished
Notes These vents were used to ventilate the tower in the days of the oil burning lamp. If improperly adjusted the light could either flare or go out.
- Location** Tower: Third floor [More work Rqd.](#) [more info](#)



005 **Maker** Chance Brothers? UK, part of original fittings
Object Vent 2 to right round tower
Medium Brass
Size cms 24 diam , 4 cm deep with knob
Condition Fair, tarnished
Notes

03.Tower: parts
 1890s



Location Tower: Third floor

More work Rqd. [more info](#)

006 **Maker** Chance Brothers? UK, part of original fittings
Object Vent 3 to right round tower
Medium Brass
Size cms 24 diam , 4 cm deep with knob
Condition Fair, tarnished
Notes Picture 2 shows vent

03.Tower: parts
 1890s



Location Tower: Third floor

More work Rqd. [more info](#)

007 **Maker** Chance Brothers? UK, part of original fittings
Object Vent 4 to right round tower
Medium Brass
Size cms 24 diam , 4 cm deep with knob
Condition Fair, tarnished
Notes

03.Tower: parts
 1890s



Location Tower: Third floor

More work Rqd. [more info](#)

008 **Maker** Chance Brothers? UK, part of original fittings
Object Vent 5 to right round tower
Medium Brass
Size cms 24 diam , 4 cm deep with knob
Condition Fair, tarnished
Notes

03.Tower: parts
 1890s



Location Tower: Third floor

More work Rqd. [more info](#)

009 **Maker** Chance Brothers? UK, part of original fittings
Object Vent 6 to right round tower
Medium Brass
Size cms 24 diam , 4 cm deep with knob
Condition Fair, tarnished
Notes

03.Tower: parts
 1890s



Location Tower: Third floor

More work Rqd. [more info](#)

010 **Maker** Chance Brothers? UK, part of original fittings
Object Vent 7 to right round tower
Medium Brass
Size cms 24 diam , 4 cm deep with knob
Condition Fair, tarnished
Notes Picture 2 shows vent cleaned in 2005

03.Tower: parts
 1890s



Location Tower: Third floor

More work Rqd. [more info](#)

011 **Maker** Chance Brothers? UK, part of original fittings
Object Vent 8 to right round tower
Medium Brass
Size cms 24 diam (knob missing)
Condition Fair, tarnished, Knob missing
Notes

03.Tower: parts
 1890s



Location Tower: Third floor

More work Rqd. [more info](#)

012 **Maker** Chance Brothers? UK, part of original fittings
Object Vent 9 to right round tower
Medium Brass
Size cms 24 diam (knob missing)
Condition Fair, tarnished, Knob missing
Notes

03.Tower: parts
 1890s



Location Tower: Third floor

More work Rqd. [more info](#)

013 **Maker** Chance Brothers? UK, part of original fittings
Object Vent 10 to right round tower
Medium Brass
Size cms 24 diam , 4 cm deep with knob
Condition Painted over, some paint later removed
Notes

03.Tower: parts
 1890s



Location Tower: Third floor

More work Rqd. [more info](#)

014 **Maker** Chance Brothers? UK, part of original fittings
Object Vent 11 to right round tower
Medium Brass
Size cms 24 diam , 4 cm deep with knob
Condition Fair tarnished
Notes

03.Tower: parts
 1890s



Location Tower: Third floor

More work Rqd. [more info](#)

015 **Maker** Chance Brothers? UK, part of original fittings
Object Vent 12 to right round tower
Medium Brass
Size cms 24 diam , 4 cm deep with knob
Condition Fair tarnished
Notes

03.Tower: parts
 1890s



Location Tower: Third floor

More work Rqd. [more info](#)

016 **Maker** Chance Brothers? UK, part of original fittings
Object Vent 13 to right round tower
Medium Brass
Size cms 24 diam , 4 cm deep with knob
Condition Fair tarnished
Notes

03.Tower: parts
 1890s



Location Tower: Third floor

More work Rqd. [more info](#)

017 **Maker** Chance Brothers? UK, part of original fittings
Object Vent 14 to right round tower
Medium Brass
Size cms 24 diam , 4 cm deep with knob
Condition Fair, tarnished
Notes

03.Tower: parts
 1890s



Location Tower: Third floor

More work Rqd. [more info](#)

018 **Maker** Chance Brothers? UK Probably part of original
Object Small vent to right of door
Medium Brass
Size cms 12 diam
Condition Fair, tarnished
Notes This is a single smaller vent by the door

03.Tower: parts
 1890s



Location Tower: Third floor

More work Rqd. [more info](#)

035 **Maker** Chance Brothers? with later repair
Object Wind vane
Medium Painted (thick white enamel) with copper wings and steel or galvanised rod,
Size cms 54 cms long approx. x 31 wide
Condition Corroded and paint cracking and peeling off
Notes Close inspection shows a steel bar or later than 1890 type. It is probable that these are the original wind vein wings with a later repair.

03.Tower: parts



Location Tower, second floor (Original Lounge)

More work Rqd. ask JC [more info](#)

062 **Maker**
Object Black wall cupboard
Medium Plywood
Size cms 50 cms h x 55.4 w overall x 17.5 overall depth
Condition Good
Notes Not sure what this was for -

03.Tower: parts



Location Tower, Ground floor

More work Rqd. ask JC [more info](#)

063 **Maker** J & R Duff?
Object Plaque on inner door
Medium Brass
Size cms 7.4 x 12.8
Condition Good
Notes Features in JC's photographs

03.Tower: parts
 pre 1900s?



Location Tower, Ground floor

More work Rqd. [more info](#)

064 **Maker** Caretaker?
Object Decorative door lintel
Medium Wood
Size cms 100 cms approx. (not measured)
Condition Good
Notes

03.Tower: parts

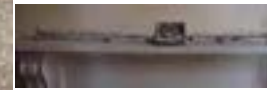


Location Tower, Ground floor

More work Rqd. [more info](#)

187 **Maker**
Object Piece of down Pipe from the tower
Medium Painted copper
Size cms 98.0 long x 3. diam
Condition Paint flaking
Notes Found in garden 3.07.03 RNJ

03.Tower: parts



Location Museum Room Q 1 Cupboard 2

More work Rqd. [more info](#)

245 **Maker**
Object Two clips ? from Tower (Chance Brothers?)
Medium Iron
Size cms See photo 12.0 x 5.6
Condition Fair
Notes Perhaps these are spare clips for tower equipment?

03.Tower: parts

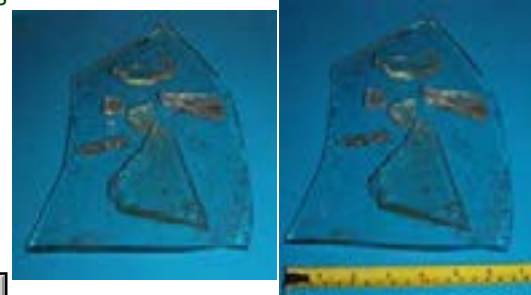


Location Museum Room Q 1 Cupboard 3

More work Rqd. [more info](#)

- 252 **Maker**
Object Glass from tower
Medium Glass
Size cms Various sizes see photo
Condition Broken pieces
Notes Found in bush near the tower

03.Tower: parts

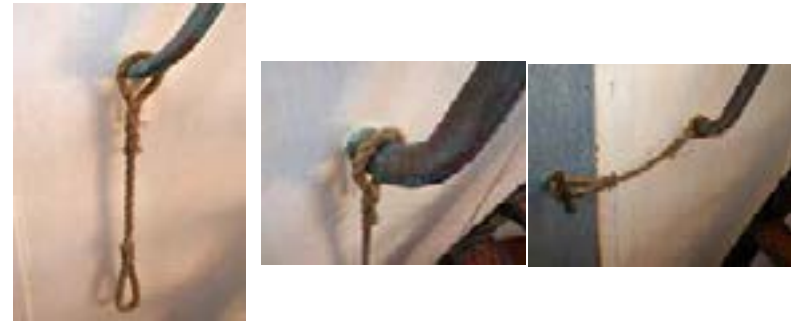


Location Museum Room Q 1 Cupboard 3

More work Rqd. [more info](#)

- 020 **Maker** Light keepers
Object Rope
Medium Hemp
Size cms 50 cm length
Condition Fair
Notes This is used to make sure the door does not get blown open. The slicing would have had to be done on the spot by one of the keepers.

04. Keepers' Equipment

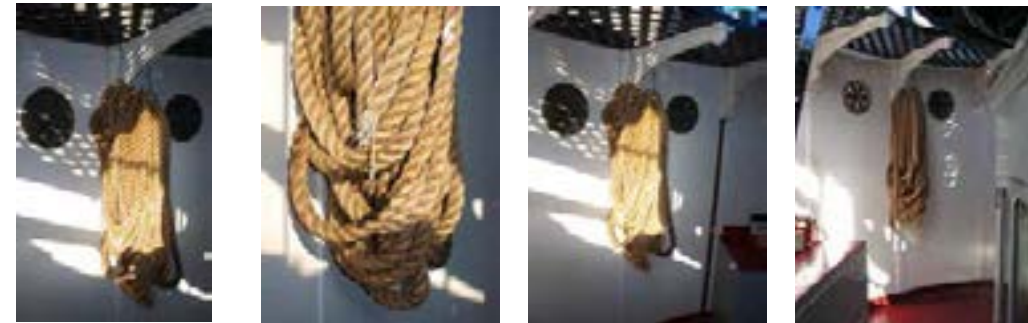


Location Tower: Third floor

More work Rqd. [more info](#)

- 021 **Maker**
Object Big Rope
Medium Sisal or hemp ?
Size cms approx. 30 metres length
Condition good
Notes This was the original safety rope to lower oneself down from the top of the tower. (Picture 4 shows setting. RC 2005)

04. Keepers' Equipment



Location Tower: Third floor

More work Rqd. [more info](#)

- 022 **Maker** Light keepers
Object Pole
Medium Wood with nail
Size cms 1.54 metres length Nail 8 cm
Condition Old
Notes This pole was used by the light keepers - It was certainly devised in a inventive and makeshift way with the old nail but was an essential tool for adjusting the curtains.

04. Keepers' Equipment



Location Tower: Third floor

More work Rqd. [ask JC](#) [more info](#)

023 **Maker**
Object Shell oil tin
Medium Metal
Size cms 16.7 x 16 diam
Condition Good body, lid rusted
Notes

04. Keepers' Equipment



Location Tower: Third floor

More work Rqd. [more info](#)

024 **Maker**
Object Caltex oil tin
Medium Metal
Size cms 17 x 16 diam
Condition Fair
Notes

04. Keepers' Equipment



Location Tower: Third floor

More work Rqd. [more info](#)

025 **Maker**
Object Castrol grease tin
Medium Metal
Size cms 9.5 x 10 diam
Condition fair
Notes

04. Keepers' Equipment



Location Tower: Third floor

More work Rqd. [more info](#)

026 **Maker**
Object Oil can
Medium Metal
Size cms 15 x 9.5 diam 20 with handle and tubular spout
Condition Fair
Notes Inscribed 'Maat' on body

04. Keepers' Equipment



Location Tower: Third floor

More work Rqd. [more info](#)

027 **Maker** 04. Keepers' Equipment

Object Oil can

Medium

Size cms 15 x 9.5 diam 20 with handle and backward tubular spout

Condition Fair

Notes Tape label unreadable, on body



Location Tower: Third floor

More work Rqd. [more info](#)

028 **Maker** Stoptime 04. Keepers' Equipment

Object Stop watch

Medium Steel case

Size cms 5 x 7 x 1.2

Condition Fair

Notes For ensuring timing of mechanism correct



Location Tower: Third floor

More work Rqd. [more info](#)

030 **Maker** USA 04. Keepers' Equipment

Object Gloves pr.

Medium Rayon with Cotton liner

Size cms 27 cm 19 width to thumb approx.

Condition Good

Notes Made in USA labelled: 100% Rayon outer 100% cotton lining.



Location Tower: Third floor

More work Rqd. [more info](#)

031 **Maker** 04. Keepers' Equipment

Object Gloves pr. (yellow)

Medium

Size cms 28 cm 18 width to thumb approx.

Condition Good

Notes Made in USA labelled: 100% Rayon outer 100% cotton lining.



Location Tower: Third floor

More work Rqd. [more info](#)

032 Maker 04. Keepers' Equipment

Object Gloves pr. (long wrist)
 Medium
 Size cms 44 cm 17.2 width to thumb approx. each
 Condition Good
 Notes Dated 4/64 ? D.S.T. (keeper's initials?)



Location Tower: Third floor More work Rqd. [more info](#)

033 Maker 04. Keepers' Equipment

Object Paint brush with sawn handle (3")
 Medium
 Size cms 14 cm long 8 width
 Condition Good
 Notes initials: This has a carefully trimmed handle for a special purpose - perhaps for allowing it to reach a particular part of mechanism for cleaning.



Location Tower: Third floor More work Rqd. ask JC [more info](#)

034 Maker 04. Keepers' Equipment

Object Safety sign on door
 Medium
 Size cms 29.8 x 22.3 w
 Condition Good
 Notes



Location Tower: Third floor More work Rqd. [more info](#)

038 Maker 04. Keepers' Equipment

Object Table 1 for wind vane
 Medium Recycled timer (from workshop)
 Size cms 61.3 cms high x 93.4 length width overall x 58 depth
 Condition Fair
 Notes Probably made in station workshop out of available timber and shaped for the tower - showing necessary re-use of materials.



Location Tower, second floor (Original Lounge) More work Rqd. [more info](#)

039 **Maker** Caretakers (after decommission) **04. Keepers' Equipment**

Object Table 2 for electric motor

Medium Painted recycled timber (from workshop)

Size cms 53.5 cms high x 67.5 length x 49.5 depth

Condition Good

Notes The motor is extremely heavy - the table has a sturdiness to match.



Location Tower, second floor (Original Lounge)

More work Rqd. **more info**

040 **Maker** **04. Keepers' Equipment**

Object Metal cog with Allan key stuck in it

Medium Metal core part coated with bitumen

Size cms 7 cm length x 3.5 diam at end 4.7 diam at centre

Condition Fair

Notes Check JC



Location Tower, second floor (Original Lounge)

More work Rqd. ask JC **more info**

041 **Maker** **04. Keepers' Equipment**

Object Rod 1

Medium iron with copper? adjustable joiner

Size cms 130 x

Condition

Notes These are sure to have a specific purpose for the adjustment of some light equipment - curtains?



Location Tower, second floor (Original Lounge)

More work Rqd. ask JC **more info**

042 **Maker** **04. Keepers' Equipment**

Object Rod 2 with threaded end

Medium iron

Size cms 60.7

Condition

Notes These are sure to have a specific purpose for the adjustment of some light equipment - curtains?



Location Tower, second floor (Original Lounge)

More work Rqd. ask JC **more info**

- 044 **Maker** Tilley **04. Keepers' Equipment**
Object Tilley lamp
Medium Aluminium and brass base to tank?
Size cms 52 cm with handle 16.8 diam of tank 19 approx. overall
Condition Good
Notes Inscribed manufactured in the United Kingdom
 With mantle. "Maatsuyker Emergency lamp 1969" inscribed on base
- Location** Tower, First floor (original radio room) [More work Rqd.](#) [more info](#)



- 045 **Maker** Tilley **04. Keepers' Equipment**
Object Tilley lamp
Medium Aluminium and brass base to tank?
Size cms 51 cm with handle 16.8 diam of tank 19 approx. overall
Condition Good
Notes Inscription on glass, manufactured in the United Kingdom
 No mantle DST QI 100 1971
- Location** Tower, First floor (original radio room) [More work Rqd.](#) [more info](#)



- 046 **Maker** Aladdin **04. Keepers' Equipment**
Object Aladdin Lamp
Medium Aluminium
Size cms 48.5 x 16.4 diam of base 20.4 across overall
Condition Good
Notes Inscribed with makers name
- Location** Tower, First floor (original radio room) [More work Rqd.](#) [more info](#)



- 047 **Maker** Chance Brothers **04. Keepers' Equipment**
Object Ladder
Medium Iron, with grey enamel paint
Size cms 217.00 x 32.3 3.7 depth of
Condition This could have been heavily weathered - recently painted to stabilise erosion.
Notes This ladder has been noticed by other lighttower experts as being part of the original Chance brothers Equipment
- Location** Tower, First floor (original radio room) [More work Rqd.](#) [more info](#)



- 048 **Maker** Keepers? **04. Keepers' Equipment**
Object Ladder
Medium Wood, with black paint
Size cms 200 x 33 at base 28.5 at top: Top section 53 x 14 cms x 2.5 cm
Condition Fair, repainted
Notes



Location Tower, First floor (original radio room) **More work Rqd.** [more info](#)

- 057 **Maker** Department of Transport and Communications **04. Keepers' Equipment**
Object Lighthouse visitors book **1988**
Medium Sheets from Older book within plastic covered folder
Size cms Cover height 31.8 x 25.5 x 2.5 approx: Page 29.6 x 20.5.
Condition Fair
Notes This is an extremely important record and should be fully scanned.
 Task for further work on this project



Location Tower, First floor (original radio room) **More work Rqd.** [Scan](#) [more info](#)

- 058 **Maker** Lightkeepers **04. Keepers' Equipment**
Object White cupboard with shaped top to fit tower room
Medium White painted ply
Size cms 96 x 121 max. 41 at widest part; 30.5 at each end.
Condition
Notes



Location Tower, First floor (original radio room) **More work Rqd.** [more info](#)

- 060 **Maker** **04. Keepers' Equipment**
Object Emergency sling
Medium Plastic aluminium and rope
Size cms 216.5 x 61.5 x 19
Condition Good
Notes Out dated



Location Tower, Ground floor **More work Rqd.** [more info](#)

- 061 **Maker** 04. Keepers' Equipment
Object Signal Flag cabinet
Medium Plywood with canisters for each signal flag
Size cms 155.5 x 102.0 x 35.25 ; each container 34.5 long x 15.7 diam
Condition Good but all flags missing
Notes 40 compartments; no signal flags. Gwen Egg made a flag when she was artist in residence it is in canister 9? - check and photograph Gwen's flag
- Location** Tower, Ground floor [More work Rqd.](#) [more info](#)



- 146 **Maker** Chance Brothers? (Perhaps part of the kit from 04. Keepers' Equipment
Object Wooden Whistle 1890s
Medium Wood (ebony?) exotic timber
Size cms 6.0 whistle length 1. diam of mouth piece 2.8 at top end. 13.5 chain with
Condition Fair
Notes This is one of the most significant objects from the original fit out of the tower. It was in a tube in the tower and was used to alert other keepers in the dwellings.
- Location** Museum Room Q 1 [More work Rqd.](#) [more info](#)



- 152 **Maker** 04. Keepers' Equipment
Object Pr. of Semaphore flags
Medium nylon and wood
Size cms 38 x 39.7 Flag 61 cms handle each
Condition Poor with some rust stains and dirt
Notes Used at the haulage way or in the lighthouse
- Location** Museum Room Q 1 [More work Rqd.](#) [more info](#)



- 153 **Maker** 04. Keepers' Equipment
Object Ampol
Object Oil can Ampol Copr cote
Medium Can with paper label
Size cms 10.2 x 10 diam
Condition Fair condition
Notes
- Location** Museum Room Q 1 [More work Rqd.](#) [more info](#)



154 **Maker** Ampol
Object Oil can Ampol (Jet Lube)
Medium Can with paper label
Size cms 8.5 x 9.2 diam
Condition Fair condition
Notes

04. Keepers' Equipment



Location Museum Room Q 1

More work Rqd. [more info](#)

175 **Maker**
Object 1 small object with centre shaft Roller?
Medium Composite
Size cms 9 cms x 42.8 diam
Condition Fair
Notes Unknown object

04. Keepers' Equipment



Location Museum Room Q 1 Cupboard 2

More work Rqd. [more info](#)

195 **Maker**
Object Big MAAT paint bucket
Medium Galvanised iron
Size cms 34.7 cms 33.7 diam at rim (varies)
Condition
Notes Handle repaired with blue coated electric wire

04. Keepers' Equipment



Location Museum Room Q 1 Cupboard 2

More work Rqd. [more info](#)

202 **Maker**
Object Australian Flag
Medium Fabric
Size cms 130 x 250
Condition Some stars worn off.
Notes

04. Keepers' Equipment



Location Museum Room Q 1

More work Rqd. [more info](#)

203 **Maker** 04. Keepers' Equipment**Object** Lighthouse Ladder**Medium** Wood, painted**Size cms** 317 x bottom width 36 30 at top 5.5 variable**Condition** Fair**Notes** This ladder was used for maintenance on the tower -note hooks**Location** Museum Room Q 1**More work Rqd.** [more info](#)251 **Maker** 04. Keepers' Equipment**Object** Paint tray ?**Medium** Metal and various media**Size cms** 15.5 x 46.5 x 24.5**Condition** Poor probably found in bush near tower**Notes** With old newspaper and glass fragments from the tower in it.**Location** Museum Room Q 1 Cupboard 3**More work Rqd.** [more info](#)254 **Maker** Arlec 04. Keepers' Equipment**Object** Arlec swivel torch**Medium** Plastic and metal**Size cms** 13 length over-all**Condition** Fair**Notes****Location** Museum Room Q 1 Cupboard 3**More work Rqd.** [more info](#)255 **Maker** Ever Ready 04. Keepers' Equipment**Object** Ever Ready torch**Medium** Plastic and metal**Size cms** 26 length over-all**Condition** Fair**Notes****Location** Museum Room Q 1 Cupboard 3**More work Rqd.** [more info](#)

282 Maker

04. Keepers' Equipment

Object Two petrol cans, two stroke and four stroke

Medium Metal with red paint and paper labels

Size cms 19. cms height 17.7 diam

Condition Fair

Notes



Location Q 1 outside Museum Room

More work Rqd. [more info](#)

283 Maker Protectoseal Co. Chicago

04. Keepers' Equipment

Object Safety can

Medium Red painted can

Size cms 30 cms full height x 19 x 12

Condition

Notes Protectoseal / co / Chicago (oval)
No 245 embossed over makers name

Location Q 1 outside Museum Room

More work Rqd. [more info](#)

284 Maker Protectoseal co. Pratt / Australia

04. Keepers' Equipment

Object Safety can

Medium Red painted can

Size cms 36.5 full height diam 30.5

Condition

Notes



Location Q 1 outside Museum Room

More work Rqd. [more info](#)

285 Maker Protectoseal co. Pratt / Australia

04. Keepers' Equipment

Object Safety can

Medium Red painted can with yellow labels

Size cms 33 full height diam 25

Condition

Notes

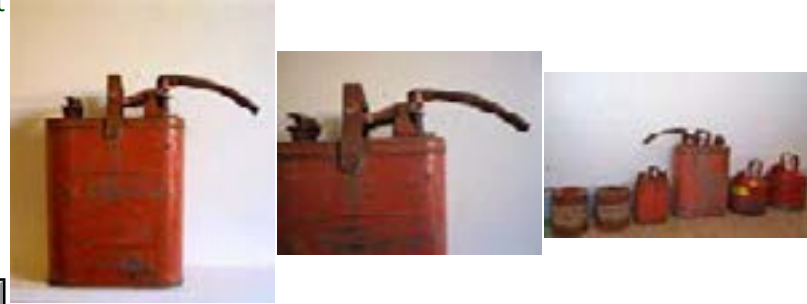


Location Q 1 outside Museum Room

More work Rqd. [more info](#)

286 **Maker** Protectoseal / Chicago
Object Safety can
Medium Red painted can
Size cms 51 full height 35 x 15.5 cm oval
Condition
Notes B8455

04. Keepers' Equipment



Location Q 1 outside Museum Room

More work Rqd. [more info](#)

306 **Maker** CLS
Object Pad lock and key
Medium Brass
Size cms 6 x 5 x 1.00 approx Key 6 with 6.5 cross bar
Condition Good
Notes These locks are on the Whim shed, Red shed and the other shed at the Whim area. They are most unusual and old.

04. Keepers' Equipment

1940



Location Whim shed, Red Shed, Tardis

More work Rqd. [more info](#)

416 **Maker** Keepers
Object Roller for helipad -(home made)
Medium Concrete and pipes
Size cms 40 approx. Diam. of roller, 80 cm. approx. length of handle.
Condition Fair
Notes This is a lovely example of inventiveness - how to make a garden roller on the island.

04. Keepers' Equipment



Location Beside helipad

More work Rqd. [more info](#)

213 **Maker** Pyrex (Tilley)
Object Two glass lantern shades
Medium Clear glass with printing
Size cms 38 as in photo each arm 24 overall length Each cup: 13.3 depth 7.00
Condition Good
Notes

05. Lantern Equipment



Location Museum Room Q 1 Cupboard 3

More work Rqd. [more info](#)

214 **Maker** Sievert **05. Lantern Equipment**

Object Swedish Kerosine Lantern lighter
Medium Brass with other metal handle
Size cms 19.5 as in photo 26 app overall length depth diam of tank 9.00
Condition Fair
Notes 10148 patent NO ? As seen being used by John Cook in his photographs.



Location Museum Room Q 1 Cupboard 3

[More work Rqd.](#) [more info](#)

215 **Maker** Tilley? **05. Lantern Equipment**

Object New lantern wicks with instructions
Medium Paper plastic and cloth
Size cms As in photo
Condition Good
Notes



Location Museum Room Q 1 Cupboard 3

[More work Rqd.](#) [more info](#)

216 **Maker** Tilley & Aladdin **05. Lantern Equipment**

Object New lantern mantles
Medium Paper wrapping and silk mantles
Size cms As in photo
Condition
Notes



Location Museum Room Q 1 Cupboard 3

[More work Rqd.](#) [more info](#)

217 **Maker** **05. Lantern Equipment**

Object Box for Tilley vaporiser
Medium Cardboard box
Size cms 15 cms long 1.6 x 1.6
Condition
Notes



Location Museum Room Q 1 Cupboard 3

[More work Rqd.](#) [more info](#)

220 **Maker** 05. Lantern Equipment

Object Spare glass pipette
Medium Newspaper wrappings and glass
Size cms See photo
Condition
Notes



Location Museum Room Q 1 Cupboard 3 [More work Rqd.](#) [more info](#)

221 **Maker** Tilley 05. Lantern Equipment

Object Two Lamp parts Small one marked Tilley
Medium Brass and metal
Size cms Larger 9.7 h x 6.2 full depth(3.7 base diam) Smaller 4.3 x 4.9
Condition Damaged
Notes



Location Museum Room Q 1 Cupboard 3 [More work Rqd.](#) [more info](#)

222 **Maker** Tilley? 05. Lantern Equipment

Object Two brass and mesh strainers? Name please!
Medium Brass & wire mesh
Size cms 1.0 x 7.5 diam
Condition Good
Notes These are part of the lantern - and can be seen being put in place in a documentary of Maatsuyker made in 1940s.



Location Museum Room Q 1 Cupboard 3 [More work Rqd.](#) [more info](#)

223 **Maker** Tilley? 05. Lantern Equipment

Object One brass strainer with pressed convex mesh strainer
Medium Brass & Mesh
Size cms 2.9 full depth 1.7 depth of ring x 7.1 diam
Condition Fair
Notes These are part of the lantern - and can be seen being put in place in a documentary of Maatsuyker made in 1940s.



Location Museum Room Q 1 Cupboard 3 [More work Rqd.](#) [more info](#)

224 **Maker** Tilley? **05. Lantern Equipment**

Object Three armed Lamp burner

Medium Brass

Size cms 10.5 h x 6.8 approx overall each arm 3.00 from base

Condition Fair

Notes Part of large lamp from lantern?



Location Museum Room Q 1 Cupboard 3

More work Rqd. **more info**

225 **Maker** Tilley? **05. Lantern Equipment**

Object Part of lamp pump?

Medium Brass

Size cms 13.2 length x 0.9 diam 1.6 diam of nut

Condition Fair

Notes



Location Museum Room Q 1 Cupboard 3

More work Rqd. **more info**

226 **Maker** Tilley? **05. Lantern Equipment**

Object Part of lamp pump?

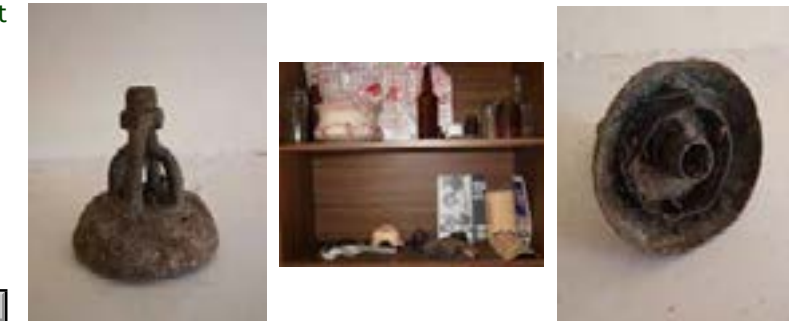
Medium Corroded metal

Size cms 8.7 high x 7.5 diam

Condition Poor

Notes Part of large lamp from lantern ?

This looks like it may have been found outside - perhaps discarded. Possibly found on track behind tower?



Location Museum Room Q 1 Cupboard 3

More work Rqd. **more info**

227 **Maker** Measure? **05. Lantern Equipment**

Object Measure?

Medium Brass

Size cms 1.8 cm wide x 12.0 length

Condition Fair

Notes 85A on end



Location Museum Room Q 1 Cupboard 3

More work Rqd. YES **more info**

228 [Maker](#) 05. Lantern Equipment

[Object](#) Small box of valves (for lamp?)
[Medium](#) Brass
[Size cms](#) See photo
[Condition](#) Good
[Notes](#) Some look unused



[Location](#) Museum Room Q 1 Cupboard 3

[More work Rqd.](#) [more info](#)

229 [Maker](#) 05. Lantern Equipment

[Object](#) Small box and plastic bag of washers
[Medium](#) Various
[Size cms](#) See photo
[Condition](#) Mixed
[Notes](#)



[Location](#) Museum Room Q 1 Cupboard 3

[More work Rqd.](#) [more info](#)

230 [Maker](#) 05. Lantern Equipment

[Object](#) 4 convex washers
[Medium](#) Composite material
[Size cms](#) See photo
[Condition](#) Mixed
[Notes](#)



[Location](#) Museum Room Q 1 Cupboard 3

[More work Rqd.](#) [more info](#)

231 [Maker](#) 05. Lantern Equipment

[Object](#) 4 small valves
[Medium](#) 3 brass, 1 Composite material
[Size cms](#) See photo
[Condition](#) Mixed
[Notes](#)



[Location](#) Museum Room Q 1 Cupboard 3

[More work Rqd.](#) [more info](#)

232 **Maker**
Object 1 cog
Medium Metal
Size cms 6.0 diam See photo
Condition Fair, rusted
Notes

05. Lantern Equipment



Location Museum Room Q 1 Cupboard 3

More work Rqd. [more info](#)

233 **Maker**
Object 1 rusted metal washer
Medium Metal
Size cms 4.5 diam See photo
Condition Poor
Notes

05. Lantern Equipment



Location Museum Room Q 1 Cupboard 3

More work Rqd. [more info](#)

234 **Maker**
Object Brass cog with six sided nut?
Medium Brass
Size cms 4 height 4.0 diam
Condition Good
Notes

05. Lantern Equipment



Location Museum Room Q 1 Cupboard 3

More work Rqd. [more info](#)

240 **Maker**
Object One cleaning brush for machinery with wire bristles
Medium Wire
Size cms 35.0 long
Condition Fair
Notes

05. Lantern Equipment



Location Museum Room Q 1 Cupboard 3

More work Rqd. [more info](#)

241 **Maker**
Object One liquid measure
Medium Metal
Size cms 26.8 long
Condition Fair
Notes

05. Lantern Equipment



Location Museum Room Q 1 Cupboard 3

More work Rqd. [more info](#)

019 **Maker**
Object Fuse Box
Medium Various media
Size cms 50 x 35.5 x 17.5
Condition Fair
Notes Fuse box for later electronic working in tower

06. Electrical Equipment



Location Tower: Third floor

More work Rqd. [more info](#)

036 **Maker** Brook Crompton Parkinson Compact ?
Object Electric Motor
Medium Cast iron
Size cms 58 cms long approx x 30.8 height 30 approx wide
Condition Corroded and paint cracking and peeling off
Notes Label: This motor was installed on top of the clockwork mechanism and used to turn the lens from 1976-1996 when it was decommissioned.

06. Electrical Equipment

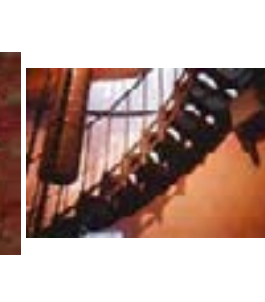


Location Tower, second floor (Original Lounge)

More work Rqd. [more info](#)

037 **Maker** Hallam Magnetics Pty Ltd
Object Power transformer box in red Metal Box
Medium Metal box painted dark red
Size cms 30.5 cms x width 30.7 (35.7 with handles) 25.5 depth
Condition Outside deteriorated
Notes Bracket for Power transformer box Metal Box, Iron painted white :36. cms high x 38.0 width overall x 31 depth. Pict 4 JC from 1970s

06. Electrical Equipment



Location Tower, second floor (Original Lounge)

More work Rqd. [more info](#)

- 145 **Maker** Solarex
Object Solar panel Solarex
Medium Solar cells with electric wire
Size cms 55 x 55 h 2.5 depth
Condition Fair
Notes One of the original solar panels from the island.

06. Electrical Equipment



Location Museum Room Q 1

More work Rqd. [more info](#)

- 174 **Maker**
Object 1 ceramic insulator from fuse box
Medium White glazed ceramic
Size cms 4.6 cms x 4 x 4.5 cm
Condition
Notes

06. Electrical Equipment



Location Museum Room Q 1 Cupboard 2

More work Rqd. [more info](#)

- 181 **Maker**
Object Plastic Cover for fuse ?
Medium Grey plastic
Size cms Height 10.5 x 12 square approx
Condition
Notes

06. Electrical Equipment



Location Museum Room Q 1 Cupboard 2

More work Rqd. [more info](#)

- 182 **Maker**
Object Switch Box
Medium Grey painted metal MAAT written on base
Size cms 16.7 square 10.2 depth approx
Condition
Notes

06. Electrical Equipment



Location Museum Room Q 1 Cupboard 2

More work Rqd. [more info](#)

253 **Maker** 06. Electrical Equipment

Object Box of old style light globes (12)
Medium Glass and wire etc.
Size cms Various sizes see photo
Condition Good
Notes These should be detailed and checked for era and value.



Location Museum Room Q 1 Cupboard 3 **More work Rqd.** YES

408 **Maker** 06. Electrical Equipment

Object Old Batteries **1960s?**
Medium
Size cms
Condition Good
Notes These were in use in 2005 - up until ? when the new system with solar panels was put in



Location Battery charging station veranda Q1 **More work Rqd.** Date

409 **Maker** 06. Electrical Equipment

Object Signs at door to Battery charging station **1960s?**
Medium
Size cms
Condition Good
Notes These were in use in 2005 - up until ? when the new system with solar panels was put in



Location Battery charging station veranda Q1 **More work Rqd.** Date

003 **Maker** 07. Communications

Object Telephone **1950s**
Medium Bakelite
Size cms 23 x 15.5 mouthpiece 23 x 10
Condition Good
Notes There are phones of this style and period in all the Island's buildings.



Location Tower: Third floor **More work Rqd.**

- 049 **Maker** 07. Communications
Object Telephone on wall bracket
Medium Bakelite on white painted wood wall bracket
Size cms 16.00 height overall, 15.2 width at base 18.5 depth 23.7 approx. length of
Condition
Notes Labelled : C Of A 225 221: The stand for the phone would have been made up by the Keepers.
- Location** Tower, First floor (original radio room) [More work Rqd.](#) [more info](#)



- 170 **Maker** 07. Communications
Object 3 ceramic Insulators
Medium Ceramic
Size cms 9 x 6 cm diam at base
Condition Fair
Notes Possibly from old telephone wires throughout Island
- Location** Museum Room Q 1 Cupboard 2 [More work Rqd.](#) [more info](#)



- 171 **Maker** 07. Communications
Object 2 ceramic Insulators with metal fittings & third matching
Medium Ceramic
Size cms 14 cms x 10.5 cm diam at base 5.5 top diam: arm approx 25 cms long
Condition Fair, metal pins in reasonable condition (less rusted than Haulage way insulators)
Notes Possibly from old telephone wires throughout Island
- Location** Museum Room Q 1 Cupboard 2 [More work Rqd.](#) [more info](#)



- 172 **Maker** 07. Communications
Object 2 ceramic Insulators one with metal fitting
Medium ceramic
Size cms 8.5 cms x 8.2 cm diam at base 3.8 top diam: arm approx 15 cms long
Condition Fair, metal pin in reasonable condition second without metal arm
Notes Possibly from old telephone wires throughout Island
- Location** Museum Room Q 1 Cupboard 2 [More work Rqd.](#) [more info](#)



173 Maker

07. Communications

Object 1 ceramic insulator
 Medium Brown highly glazed ceramic
 Size cms 6 cms x 7 cm diam at top
 Condition Good
 Notes



Location Museum Room Q 1 Cupboard 2

More work Rqd. [more info](#)

180 Maker

07. Communications

Object Walkie talkie radio set with cover
 Medium Leather cover and radio set
 Size cms Height closed 29.5 x 23 (includes side pocket) x 11.5
 Condition
 Notes



Location Museum Room Q 1 Cupboard 2

More work Rqd. [more info](#)

183 Maker

07. Communications

Object Telephone
 Medium Bakelite
 Size cms 23.2 h base x 15.8 w 11.23 cm 10.2 Length of receiver
 Condition Fair
 Notes



Location Museum Room Q 1 Cupboard 2

More work Rqd. [more info](#)

184 Maker

07. Communications

Object Telecom phone (80s)
 Medium Brown Plastic
 Size cms 16 h base x 20 w x 7.8 d cm Length of receiver 22
 Condition Good
 Notes



Location Museum Room Q 1 Cupboard 2

More work Rqd. [more info](#)

185 **Maker** 07. Communications

Object Telecom phone (80s)
Medium Beige
Size cms 16 h base x 20 w x 7.8 d cm Length of receiver 22
Condition Good
Notes



Location Museum Room Q 1 Cupboard 2 **More work Rqd.** [more info](#)

186 **Maker** 07. Communications

Object AMSA Telephone Directory
Medium Plastic cover with loose leaf inside pages
Size cms 23.7 h base x 20.4 w x 4.2
Condition Good
Notes



Location Museum Room Q 1 Cupboard 2 **More work Rqd.** [more info](#)

189 **Maker** Aldis 07. Communications

Object ALDIS Long range signalling lamp MK10
Medium Wooden box with dove tailed corners
Size cms 23 h x 38.6 20.9 Box am handle Head 22.8 , diam 2.4
Condition Fair
Notes With jump leads quite (70s) in separate box
 Spare light globe in cardboard packaging



Location Museum Room Q 1 Cupboard 2 **More work Rqd.** [more info](#)

190 **Maker** 07. Communications

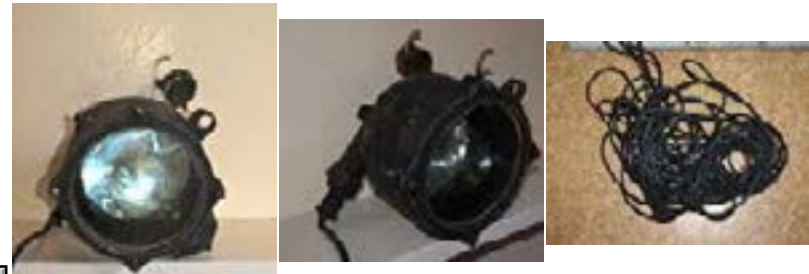
Object RAAF portable long range signalling lamp(earlier - above)
Medium Wooden ply box
Size cms 23 h x 38.6 20.9 Box am handle Head 22.8 , diam 2.4
Condition Fair
Notes 1941(With jump leads)



Location Museum Room Q 1 Cupboard 2 **More work Rqd.** [more info](#)

191 **Maker** 07. Communications

Object Long Distance signalling lantern with long electric cord
Medium Lamp (no box)
Size cms 28 cms 29 diam of lantern 16 of lantern
Condition Fair
Notes



Location Museum Room Q 1 Cupboard 2 [More work Rqd.](#) [more info](#)

219 **Maker** Ekco 07. Communications

Object Spare light light globe for Aldis lamp record 189
Medium Cardboard wrappings and glass globe
Size cms See photo
Condition
Notes Ekco bulb also shown in record 218. As a projector lamp it was probably used for a signalling lamp.



Location Museum Room Q 1 Cupboard 3 [More work Rqd.](#) [more info](#)

256 **Maker** Mitralux 07. Communications

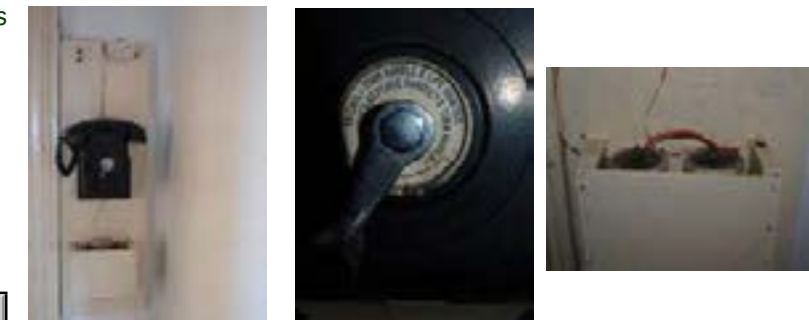
Object Mitralux L140 signalling torch
Medium Plastic and metal
Size cms 22.2 height 20.5 length overall 22.2 maximum width
Condition Fair
Notes



Location Museum Room Q 1 Cupboard 3 [More work Rqd.](#) [more info](#)

277 **Maker** 07. Communications

Object Bakelite phone on wall stand, with battery box below
Medium Bakelite and wood and batteries
Size cms Panel 85 x 27 x 2.2
Condition Good
Notes Good to still have the batteries in position.



Location Q 1 [More work Rqd.](#) [more info](#)

- 296 **Maker** 07. Communications
Object Box for early telephone communications on Island
Medium Metal
Size cms Box 38.5 x 23 x 13.4 - pole approx 120.
Condition
Notes These yellow boxes appear on the track - this in photograph is on the top side of the road just before the Olympic pool.
- Location** Track: top side, just before the Olympic pool. [More work Rqd.](#) [more info](#)



- 300 **Maker** PMG 07. Communications
Object PMG Telephone wire box
Medium Concrete metal
Size cms
Condition Fair
Notes These followed the yellow boxes.
- Location** Track: near tardis. [More work Rqd.](#) [more info](#)



- 301 **Maker** PMG 07. Communications
Object PMG Communications Box (known as the Tardis)
Medium Concrete base and moulded fibreglass
Size cms 242 height near door, total width 180
Condition Fair
Notes Installed to bring TV and phone to the Keepers. Stories are: the TV never worked properly in the quarters but was watched in the back of the truck near this building.
- Location** Track: Tardis. [More work Rqd.](#) [more info](#)



- 341 **Maker** 07. Communications
Object Telephone bell box 1950s?
Medium Metal, painted grey
Size cms 17 x 17 x 10
Condition Good
Notes
- Location** Q 2 Passageway Left of South Door. [More work Rqd.](#) [more info](#)



342 **Maker**
Object Telephone
Medium Bakelite
Size cms Base plate 56.3 x 27, Battery box 20 x 18 x 8.7
Condition Good
Notes Label below cradle / C. of A. / D.O.T. 225223

07. Communications

1950s?



Location Q 2 Passageway

More work Rqd. [more info](#)

348 **Maker**
Object Phone
Medium Bakelite on fibreboard base plate
Size cms Base plate: 55.5 x 27; Box 20 x 17.5 x 8.8
Condition Good
Notes The cords on this phone seem older than others on the Island. Perhaps Q3 was not being used when the other phones on the Island were last updated.

07. Communications

1950s?



Location Q 3 Hallway

More work Rqd. [more info](#)

243 **Maker**
Object Part of Generator?
Medium Iron painted green
Size cms See photo
Condition Fair
Notes

08. Generator equipment



Location Museum Room Q 1 Cupboard 3

More work Rqd. [more info](#)

244 **Maker**
Object Part of Generator?
Medium Iron painted green
Size cms See photo 6.4 length 5.2 diam
Condition Fair
Notes Marked 201 / 1110

08. Generator equipment



Location Museum Room Q 1 Cupboard 3

More work Rqd. [more info](#)

250 **Maker** 08. Generator equipment

Object 2 base brackets for machinery or fuel tanks

Medium Iron

Size cms 8 x 13.8 (plate) 14 depth

Condition Rusted

Notes



Location Museum Room Q 1 Cupboard 3

More work Rqd. **more info**

289 **Maker** Lister 08. Generator equipment

Object Generator 1

Medium

Size cms 134 x 250 (platform) x 90 high from platform.

Condition

Notes The Generator shed warrants some more detailed cataloguing. Due to lack of time only 3 objects were detailed March 2013



Location Generator Shed

More work Rqd. **more info**

290 **Maker** Lister 08. Generator equipment

Object Generator 2

Medium

Size cms 134 x 250 (platform) x 90 high from platform.

Condition

Notes The Generator shed warrants some more detailed cataloguing. Due to lack of time only 3 objects were detailed March 2013



Location Generator Shed

More work Rqd. **more info**

291 **Maker** Lister 08. Generator equipment

Object Another example to be detailed from Generator shed

Medium

Size cms

Condition

Notes The Generator shed warrants some more detailed cataloguing. Due to lack of time only 3 objects were detailed March 2013



Location Generator Shed

More work Rqd. **more info**

155 **Maker**
Object Nail (from haulage?)
Medium
Size cms 19 x 1.1 cm square shaft, 2.0 sq. head
Condition Fair condition
Notes

09. Haulage



Location Museum Room Q 1

More work Rqd. [more info](#)

168 **Maker**
Object Insulator
Medium Brown Glass
Size cms 23 overall insulator 10 x 7 cm diam at base
Condition
Notes Found near haulage way near the gulch

09. Haulage



Location Museum Room Q 1 Cupboard 2

More work Rqd. [more info](#)

169 **Maker**
Object Insulator
Medium Clear Glass with rusted pin
Size cms 23 overall insulator 10 x 7 cm diam at base
Condition Glass discoloured and rusted pin
Notes

09. Haulage



Location Museum Room Q 1 Cupboard 2

More work Rqd. [more info](#)

303 **Maker**
Object Collection of old bolts
Medium Iron
Size cms Various, up to 30 cms in length
Condition Rusted
Notes Possibly from haulage?

09. Haulage
1890s?

Location Red Shed

More work Rqd. [more info](#)

- 308 **Maker** 09. Haulage
Object Trolley
Medium Wood and iron
Size cms 1.68 x 85.0 (without hook) x 21 (Very heavy)
Condition Fair
Notes This is the base of the trolley for the haulage. There are photos of this as it was in the John Cook Archive.
- Location** Whim shed [More work Rqd.](#) [more info](#)



- 309 **Maker** 09. Haulage
Object Rollers 9 straight sided
Medium Metal
Size cms 38.00(without pin, Pin: 4.00) Diam 11.5 shaped
Condition Fair
Notes These rollers have been collected from the original haulage tracks
- Location** Whim shed [More work Rqd.](#) [more info](#)



- 310 **Maker** 09. Haulage
Object Rollers 5 concave
Medium Metal, Aluminium? shell
Size cms 38.00 (without pin, Pin: 4.00) Diam 12.5
Condition Fair
Notes These rollers have been collected from the original haulage tracks
- Location** Whim shed [More work Rqd.](#) [more info](#)



- 311 **Maker** 09. Haulage
Object Rollers 3 wooden
Medium Wooden with metal core
Size cms 46.00 length (without pin, Pin: 4.00) Diam 13 (varies) pin 4.00
Condition Poor
Notes The wooden rollers would have predated the metal ones? These rollers have been collected from the original haulage tracks
- Location** Whim shed [More work Rqd.](#) [more info](#)



- 312 **Maker** 09. Haulage
Object Rollers 3 smaller wooden
Medium Wooden with metal core
Size cms 21.00 length (without pin, Pin: 4.50 varies) Diam 14.5
Condition Poor
Notes The wooden rollers would have predated the metal ones? These rollers have been collected from the original haulage tracks
- Location** Whim shed [More work Rqd.](#) [more info](#)



- 313 **Maker** 09. Haulage
Object Rollers 4 cast iron - rusted
Medium Cast iron
Size cms 36.00 length (without pin, Pin: 4.0) Diam 12
Condition Rusted
Notes The wooden rollers would have predated the metal ones? Possibly these cast iron ones came after the wood - before the others. These rollers have been collected from the original haulage tracks
- Location** Whim shed [More work Rqd.](#) [more info](#)



- 314 **Maker** 09. Haulage
Object 2 Wooden rollers
Medium Cast iron
Size cms 36.00 length (without pin, Pin: 4/5 cms) Diam 12 (14.5 swollen one)
Condition Metal rusted: one swollen with rot
Notes The wooden rollers would have predated the metal ones? one swollen with damp rot. These rollers have been collected from the original haulage tracks
- Location** Whim shed [More work Rqd.](#) [more info](#)



- 315 **Maker** 09. Haulage
Object Gear lever? from old motor
Medium Cast iron, Metal badly rusted but stabiliser has been applied
Size cms 97.00 length, Diam. of large cog: 10.5 x 5 cm thick.
Condition Metal rusted
Notes Uncertain exactly which bit this was.
- Location** Whim shed [More work Rqd.](#) [more info](#)



- 316 **Maker** 09. Haulage
Object Yoke for horse which drove the first haulage
Medium Cast iron and wood
Size cms 123 cms full height with wood. Harness from wood: 94 cms.
Condition Metal badly rusted but stabiliser has been applied
Notes There is single picture of the horse harnessed into this apparatus in the historic photographs of Maatsuyker Island as part of the John Cook Book. In all these photos it is shown upside down. The wooden arm is cut.
Location Whim shed [More work Rqd.](#) YES more info



- 317 **Maker** 09. Haulage
Object Sleeper supporting brackets and remains of roller.
Medium Cast iron and wood
Size cms Full length bracket to bracket 63.5 cms
Condition Poor, rusted metal
Notes This must have been brought in from outside - for preservation and easy viewing of a sleeper with roller.
Location Whim shed [More work Rqd.](#) YES more info



- 318 **Maker** 09. Haulage
Object Remnants of rollers
Medium Rusted metal wood etc.
Size cms Various
Condition Poor
Notes
Location Whim shed [More work Rqd.](#) YES more info



- 319 **Maker** 09. Haulage
Object Unknown tool
Medium Rusted metal and other medium
Size cms 37 cms length overall, shaft: 3.5 diam; head 12 x 12 cms thick
Condition Poor
Notes
Location Whim shed [More work Rqd.](#) YES more info



320 Maker

Object 2 rusted nails
 Medium Rusted metal
 Size cms 22 cms approx. length
 Condition Poor
 Notes

09. Haulage
1900 ?

Location Whim shed

More work Rqd. YES

321 Maker

Object 1 long object
 Medium Rusted metal
 Size cms 77 cms approx. length
 Condition Poor, remnants of vegetation adhering as brought in from outside
 Notes

09. Haulage
1900 ?

Location Whim shed

More work Rqd. YES

322 Maker

Object 1 long object
 Medium Rusted metal with steel? pin
 Size cms 82.5 cms approx. length
 Condition Poor, remnants of vegetation adhering as brought in from outside
 Notes This has a pointed steel pin inside?

09. Haulage
1900 ?

Location Whim shed

More work Rqd. YES

323 Maker

Object Side brace from trolley?
 Medium Rusted metal
 Size cms 30 x 5 x 1 cms approx.
 Condition Fair
 Notes

09. Haulage
1940s

Location Whim shed

More work Rqd. YES

324 Maker

Object Cable

Medium Steel

Size cms Coil 150 cms diam.

Condition Fair

Notes This is the steel cable from the haulage way.

09. Haulage

1960s ?



Location Whim shed

More work Rqd. YES more info

325 Maker

Object Part of 2 old electric motors

Medium Metal

Size cms

Condition Fair

Notes The objects on this shelf could be catalogued individually, but we were running out of time

09. Haulage

1950s



Location Whim shed

More work Rqd. YES more info

326 Maker

Object Shelf with various objects

Medium Various

Size cms

Condition Fair

Notes The objects on this shelf could be catalogued individually, but we were running out of time

09. Haulage

1950s



Location Whim shed

More work Rqd. Yes more info

327 Maker

Object Cover from old engine?

Medium Metal

Size cms

Condition Fair

Notes The objects on this shelf could be catalogued individually, but we were running out of time

09. Haulage

1950s



Location Whim shed

More work Rqd. YES more info

328 **Maker** Harman
Object Whim engine No. 1
Medium
Size cms 281 Length x 77 width 124 full height
Condition Fair
Notes

09. Haulage
 1940s



Location Whim shed

More work Rqd. YES

329 **Maker**
Object Brace Arch at front of Machine
Medium
Size cms 143 h x 74 width 31 depth full total
Condition Poor
Notes This arch fed the cable to the wheel on the winch.

09. Haulage
 1940s



Location Whim shed

More work Rqd. YES

330 **Maker**
Object Quick winch
Medium
Size cms 165 h overall approx 224 length platform x 109 wide
Condition Poor
Notes It was hard to get a photograph of this as a whole.

09. Haulage
 1950s



Location Whim shed

More work Rqd. YES

331 **Maker**
Object Wheel from old haulage winch
Medium
Size cms 147 approx diam
Condition Poor
Notes

09. Haulage
 1900s



Location Whim shed, outside in Bush

More work Rqd. YES

- 421 **Maker** 09. Haulage
Object Haulage way, leaving from Whim area in 2005
Medium
Size cms
Condition
Notes These photos were taken in 2005 - but It seemed relevant to include them here to give perspective to the objects in the shed.
- Location** [More work Rqd.](#) [more info](#)



- 422 **Maker** 09. Haulage
Object Haulage way, Area by old banksia in 2005 & 2013
Medium
Size cms
Condition
Notes Photos 1 & 2 - 2005 - .3& 4 show the banksia fallen by 2013
- Location** [More work Rqd.](#) [more info](#)



- 423 **Maker** 09. Haulage
Object Haulage way, roller near old banksia in 2005
Medium
Size cms
Condition
Notes This roller is still in this position 2013
- Location** [More work Rqd.](#) [more info](#)



- 424 **Maker** 09. Haulage
Object Haulage way, marker post near old banksia in 2013
Medium
Size cms
Condition
Notes
- Location** [More work Rqd.](#) [more info](#)



- 425 **Maker** 09. Haulage
Object Haulage way, the main route as viewed in 2005
Medium
Size cms
Condition
Notes These photos were taken in 2005 - . Photo 4 shows the break in the trees beside the old banksia which has since blown down.
Location [More work Rqd.](#) [more info](#)



- 426 **Maker** 09. Haulage
Object Haulage way, the main route as viewed in 2013 from bottom
Medium
Size cms
Condition
Notes Photos 1 & 2 2013
 Photo 3 shows sleepers, looking up haulage in 2005
Location [More work Rqd.](#) [more info](#)



- 427 **Maker** 09. Haulage
Object Haulage way, the way across the gully in 2005
Medium
Size cms
Condition
Notes these photos were taken in 2005 - but It seemed relevant to include them here to give perspective to the objects in the shed. Photo 4 shows the break in the trees beside the old banksia which has since blown down.
Location [More work Rqd.](#) [more info](#)



- 428 **Maker** 09. Haulage
Object Haulage way, roller near gully in 5005
Medium
Size cms
Condition
Notes these photos were taken in 2005 - but It seemed relevant to include them here to give perspective to the objects in the shed. Photo 4 shows the break in the trees beside the old banksia which has since blown down.
Location [More work Rqd.](#) [more info](#)



- 429 **Maker** 09. Haulage
Object Haulage way, spare sleepers by track in 2005
Medium
Size cms
Condition
Notes these photos were taken in 2005 - but it seemed relevant to include them here to give perspective to the objects in the shed. Photo 4 shows the break in the trees beside the old banksia which has since blown down.
Location [More work Rqd.](#) [more info](#)



- 430 **Maker** 09. Haulage
Object Haulage way, details of sleepers and nails 2005
Medium
Size cms
Condition
Notes these photos were taken in 2005 - but it seemed relevant to include them here to give perspective to the objects in the shed. Photo 4 shows the break in the trees beside the old banksia which has since blown down.
Location [More work Rqd.](#) [more info](#)



- 431 **Maker** 09. Haulage
Object Whim Shed
Medium
Size cms
Condition
Notes
Location End of track top of Haulage [More work Rqd.](#) [more info](#)



- 143 **Maker** 10. Meteorological
Object Stevenson Screen
Medium Painted wood with slatted sides, door opens down at front
Size cms 68 h front 65.3 height back 66.3 width 43.00 depth
Condition Fair. More weathered at back with rust marks from metal stand.
Notes
Location Museum Room Q 1 [More work Rqd.](#) [more info](#)



209 Maker 10. Meteorological

Object AMSA Equipment box
Medium Ply wood Equipment box with foam lined inside compartments and metal
Size cms 22 h x 51.00 x 38 cm
Condition Fair - poor inside
Notes Two extra photo details on record 212



Location Museum Room Q 1

More work Rqd. [more info](#)

210 Maker 10. Meteorological

Object AMSA Equipment box
Medium Ply wood Equipment box with foam inside deteriorated
Size cms 27 h x 48.5.00 x 49.8 cm
Condition
Notes



Location Museum Room Q 1

More work Rqd. [more info](#)

211 Maker 10. Meteorological

Object AMSA Equipment box Barometer
Medium Ply wood Equipment box with cardboard and foam packaging inserts
Size cms 37 h x 49.2.00 x 35.4 cm
Condition
Notes



Location Museum Room Q 1

More work Rqd. [more info](#)

212 Maker 10. Meteorological

Object AMSA Anemometer cups
Medium Metal pale blue cups and three wings
Size cms 38 as in photo each arm 24 overall length Each cup: 13.3 depth 7.00
Condition Good
Notes Cups were lost off the anemometer in 2005 - but these look in too good condition to have been in the bushes that long. (two photos from 209)



Location Museum Room Q 1

More work Rqd. [more info](#)

099 Maker

11. Domestic objects

Object Chamber Pot

Medium Crazed ceramic, cream with pink design

Size cms 13.6 cm 23. diam at rim

Condition Damaged repaired - pieces missing

Notes



Location Museum Room Q 1 (Second shelf)

More work Rqd. [more info](#)

100 Maker

11. Domestic objects

Object 3 shards of green/blue and white pot

Medium 3 ceramic pieces - two show base

Size cms 9 cms long from base to rim band approx 5 -7 mm thick

Condition Damaged repaired - pieces missing

Notes



Location Museum Room Q 1 Second Shelf

More work Rqd. [more info](#)

101 Maker

11. Domestic objects

Object 4 shards of blue and white

Medium 4 ceramic shards

Size cms see ruler in photo

Condition

Notes



Location Museum Room Q 1 Second Shelf

More work Rqd. [more info](#)

102 Maker

11. Domestic objects

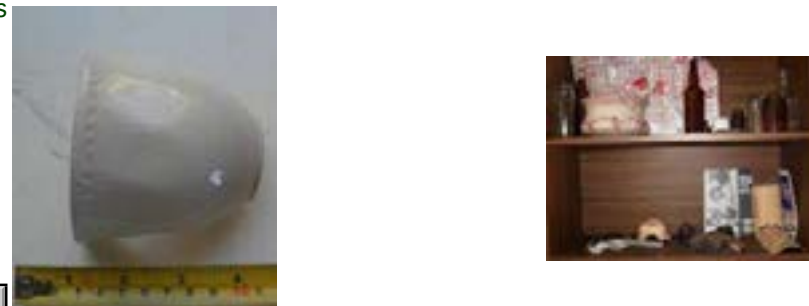
Object Shard of broken white cup

Medium White china

Size cms see ruler in photo

Condition

Notes



Location Museum Room Q 1 Second Shelf

More work Rqd. [more info](#)

103 Maker

11. Domestic objects

Object Saucer with violet design

Medium Melba bone china

Size cms see ruler in photo

Condition

Notes



Location Museum Room Q 1 Second Shelf

More work Rqd. [more info](#)

104 Maker

11. Domestic objects

Object Base shard from small dish

Medium White bone china

Size cms see ruler in photo

Condition

Notes



Location Museum Room Q 1 Second Shelf

More work Rqd. [more info](#)

107 Maker

11. Domestic objects

Object small plate

Medium Aluminium

Size cms See photo

Condition

Notes



Location Museum Room Q 1 Second Shelf

More work Rqd. [more info](#)

108 Maker

11. Domestic objects

Object Piece of old plastic table cloth

Medium Plastic

Size cms 36 x 55

Condition

Notes



Location Museum Room Q 1 Second Shelf

More work Rqd. [more info](#)

122 Maker

11. Domestic objects

Object Remnant of man's suede shoe

Medium Leather

Size cms Approx 17 length & See tape in picture

Condition
Notes

Location Museum Room Q 1 Third Shelf

More work Rqd. [more info](#)

123 Maker

11. Domestic objects

Object Remnant of boot with lace holes

Medium Leather

Size cms Approx 17 length & See tape in picture

Condition
Notes

Location Museum Room Q 1 Third Shelf

More work Rqd. [more info](#)

124 Maker Zimmer

11. Domestic objects

Object Arm brace

Medium Metal painted flesh colour

Size cms Height 19.3 length 28 cms

Condition
Notes Zimmer Glamorgan GB. see label

Location Museum Room Q 1 Third Shelf

More work Rqd. [more info](#)

125 Maker

11. Domestic objects

Object Book, Care of the sick in the home

Medium Book

Size cms 25 x 18.6

Condition
Notes

Location Museum Room Q 1 Third Shelf

More work Rqd. [more info](#)

- 126 **Maker** 11. Domestic objects
Object Pamphlet First Aid for snake bite in Australia July 1979
Medium Pamphlet
Size cms 24.5 x 14.8
Condition
Notes This would have been sent to Maatsuyker as part of collection of First Aid Products. There are no snakes on Maatsuyker.
- Location** Museum Room Q 1 Third Shelf [More work Rqd.](#) [more info](#)



- 127 **Maker** 11. Domestic objects
Object Decorative model fish
Medium Green plastic
Size cms 21 cms long see photo
Condition
Notes
- Location** Museum Room Q 1 Third Shelf [More work Rqd.](#) [more info](#)



- 144 **Maker** 11. Domestic objects
Object Wooden stool
Medium Wood, Tas Oak
Size cms 30.2 h 60.8 length 26.9 width
Condition Good
Notes
- Location** Museum Room Q 1 [More work Rqd.](#) [more info](#)



- 150 **Maker** 11. Domestic objects
Object Tobacco pouch Egbergs Drum
Medium Plastic
Size cms 8 cm x 15.0 long
Condition Poor covered with dirt, contains tobacco
Notes
- Location** Museum Room Q 1 [More work Rqd.](#) [more info](#)



160 **Maker**
Object Pr of Hinges
Medium Rusted metal
Size cms 34 cms full length 13.5 each
Condition
Notes From Q1 fence Fence and gate replaced March 2004

11. Domestic objects



Location Museum Room Q 1

[More work Rqd.](#) [more info](#)

161 **Maker**
Object Cast iron corner piece
Medium rusted metal
Size cms 60 height as shown x 140 w
Condition
Notes

11. Domestic objects



Location Museum Room Q 1

[More work Rqd.](#) [more info](#)

162 **Maker**
Object Part of cast iron bed head
Medium Rusted metal
Size cms 46 cms x 55
Condition Very rusted
Notes

11. Domestic objects



Location Museum Room Q 1

[More work Rqd.](#) [more info](#)

163 **Maker**
Object Lock with two chrome door knobs
Medium
Size cms 11 cms x 15.5
Condition
Notes

11. Domestic objects



Location Museum Room Q 1 Cupboard 2

[More work Rqd.](#) [more info](#)

164 **Maker**
Object Two brass door knobs
Medium
Size cms 4.0 cms x 4.5 diam
Condition
Notes

11. Domestic objects



Location Museum Room Q 1 Cupboard 2

[More work Rqd.](#) [more info](#)

165 **Maker**
Object Can Opener - Swingaway
Medium
Size cms 27.5 cms x 8.0 max.
Condition
Notes

11. Domestic objects



Location Museum Room Q 1 Cupboard 2

[More work Rqd.](#) [more info](#)

166 **Maker**
Object Bath/sink plug
Medium Brass
Size cms 6.3 diam x 1.0
Condition
Notes

11. Domestic objects



Location Museum Room Q 1 Cupboard 2

[More work Rqd.](#) [more info](#)

167 **Maker** Austral
Object Electric fan
Medium Small Austral brand motor
Size cms 2 5 to top of blades 17 across blades
Condition
Notes

11. Domestic objects



Location Museum Room Q 1 Cupboard 2

[More work Rqd.](#) [more info](#)

- 176 **Maker** 11. Domestic objects
Object 4 briquettes plus two fragments
Medium Coal
Size cms 13.5 x 6.5X 5 (as shown by tape)
Condition Fair
Notes John Cook talks of these on his recordings. These were the main fuel in all the fires on the island.
- Location** Museum Room Q 1 Cupboard 2 [More work Rqd.](#) [more info](#)



- 178 **Maker** 11. Domestic objects
Object 17 black ceramic tiles
Medium Ceramic with black glaze
Size cms 10 cm x 10 approx
Condition Good
Notes A quantity of these have been placed in the cupboard in the Museum room.
- Location** Museum Room Q 1 Cupboard 2 [More work Rqd.](#) [more info](#)



- 179 **Maker** 11. Domestic objects
Object Sock dryers? Mystery object?
Medium Light wood? (Balsa wood) with tape at back
Size cms 1) 45.8 x 6.3 max. width 2) 33 x 5.5
Condition
Notes The tape at the back must have had a purpose and what was it if these were sock dryers !?
- Location** Museum Room Q 1 Cupboard 2 [More work Rqd.](#) [more info](#)



- 188 **Maker** 11. Domestic objects
Object Croquet Mallet
Medium Wood with copper banding
Size cms 81.7 full length x 3. diam handle Head 22.8 , diam 2.4
Condition Good
Notes
- Location** Museum Room Q 1 Cupboard 2 [More work Rqd.](#) [more info](#)



192 **Maker**
Object Watering can
Medium Galvanised iron
Size cms 38 cms full height 45 full width 22.5 diam
Condition Fair, neat repair
Notes This can has been carefully repaired

11. Domestic objects



Location Museum Room Q 1 Cupboard 2

More work Rqd. **more info**

193 **Maker**
Object Larger jug
Medium Galvanised iron
Size cms 30 cms 23.5 diam (varies)
Condition Fair
Notes Check measurements ! which one has holes in base?

11. Domestic objects



Location Museum Room Q 1 Cupboard 2

More work Rqd. **more info**

194 **Maker**
Object Medium jug
Medium Galvanised iron
Size cms 26 cms 18 diam (varies)
Condition Fair
Notes Check measurements ! which one has holes in base?

11. Domestic objects

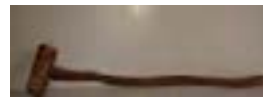


Location Museum Room Q 1 Cupboard 2

More work Rqd. **more info**

198 **Maker** Hand made on Island by? (Pre 2005)
Object Croquet Mallet (1)
Medium Wood
Size cms 98 length Handle 4.0 variable Head: 18.3 x 8 variable
Condition
Notes Made by a caretaker - who?

11. Domestic objects



Location Museum Room Q 1

More work Rqd. **more info**

- 199 **Maker** Hand made on Island by? (Pre 2005)
Object Croquet Mallet (1)
Medium Wood Tea tree
Size cms 95 length Handle 4.0 variable Head: 18.3 x 8 variable
Condition Good
Notes Made by a caretaker - who?

11. Domestic objects



Location Museum Room Q 1

More work Rqd. Yes more info

- 200 **Maker**
Object Set of 9 wire croquet hoops
Medium Fencing wire
Size cms 45 x 22 variable
Condition
Notes Made by a caretaker - who?

11. Domestic objects



Location Museum Room Q 1

More work Rqd. more info

- 201 **Maker**
Object 4 croquet balls, Jack & two posts
Medium Various
Size cms Two posts: Approx 38 cms length. Various balls
Condition
Notes

11. Domestic objects



Location Museum Room Q 1

More work Rqd. more info

- 204 **Maker**
Object Weight training bench
Medium Wood, with old carpet
Size cms 19. h overall x 145 l overall 125 l bench section 42 h
Condition
Notes Roughly home made training bench made by?

11. Domestic objects



Location Museum Room Q 1

More work Rqd. YES more info

205 Maker

11. Domestic objects

Object Set of home made made dumb bells

Medium Wood, with old carpet

Size cms 198 l x 21.5 diam of weight

Condition

Notes Dumb bells made from concrete set in a bucket with post placed in
Made by?

Location Museum Room Q 1

More work Rqd. YES more info

208 Maker

11. Domestic objects

Object Mystery object

Medium Piece of dowel with string at end

Size cms 62.5 length 1.0 diam

Condition

Notes Child's toy - ? fishing rod or the like



Location Museum Room Q 1

More work Rqd. more info

218 Maker

11. Domestic objects

Mazda, Phillips, Osram

Object Four light globes

Medium Cardboard wrappings and glass globes

Size cms 15 cms long 1.6 x 1.6

Condition

Notes These may have been for lamps or for domestic purposes



Location Museum Room Q 1 Cupboard 3

More work Rqd. more info

235 Maker

11. Domestic objects

Object Old meat tray

Medium Aluminium

Size cms 4.7 height 33.5 x 27.5

Condition Poor

Notes Found in bush



Location Museum Room Q 1 Cupboard 3

More work Rqd. more info

236 Maker

11. Domestic objects

Object 3 blocks of Pumice soap?

Medium Soap

Size cms Each 6 x 4.5

Condition Poor

Notes



Location Museum Room Q 1 Cupboard 3

More work Rqd. [more info](#)

237 Maker

11. Domestic objects

Object 1 block of pure soap?

Medium Soap

Size cms See Photo

Condition Poor

Notes



Location Museum Room Q 1 Cupboard 3

More work Rqd. [more info](#)

239 Maker

11. Domestic objects

Object Cast iron cooking pot

Medium Iron

Size cms 11.5 x 30.4 (with handles diam 25.5)

Condition Poor

Notes Found in bush



Location Museum Room Q 1 Cupboard 3

More work Rqd. [more info](#)

246 Maker

11. Domestic objects

Object Rusted door handle

Medium Rusted metal

Size cms See photo 16.0 x 7.6

Condition Poor

Notes Probably found in bush



Location Museum Room Q 1 Cupboard 3

More work Rqd. [more info](#)

247 **Maker** Tri Test
Object Bottle of tri test Spirit of sal volatile
Medium Glass bottle with oil inside
Size cms See photo 7.5 high
Condition Good
Notes

11. Domestic objects



Location Museum Room Q 1 Cupboard 3

More work Rqd. **more info**

249 **Maker**
Object Shoe last
Medium Iron
Size cms 7.0 cms height at heal irreg. x 29.0 length 9.5 width
Condition Rusted
Notes This is very large and heavy.

11. Domestic objects



Location Museum Room Q 1 Cupboard 3

More work Rqd. **more info**

304 **Maker**
Object Stove door
Medium Metal
Size cms 27 x 34 cms (including hinge) 6.5 depth with knob
Condition Fair
Notes This is not of intrinsic "value" but contributes to a complete picture of the way of life on the Island

11. Domestic objects

1950s?



Location Track: Tardis

More work Rqd. **more info**

332 **Maker**
Object Dust pan
Medium
Size cms 47 x 27 x 3,5 handle 19.3
Condition Fair
Notes This has been so carefully made. It must predate plastic - date?

11. Domestic objects

1940s ?

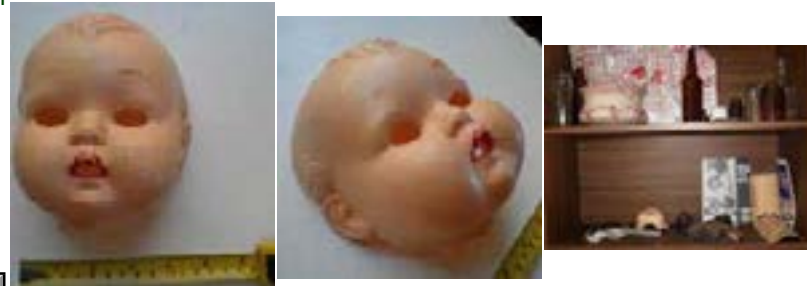


Location Q 2

More work Rqd. YES **more info**

118 **Maker**
Object Dolls face
Medium Pink plastic with red painted lips
Size cms See tape in picture
Condition
Notes

12. Domestic / children



Location Museum Room Q 1 Third Shelf

More work Rqd. [more info](#)

119 **Maker**
Object Cow boy toy gun 1950s ?
Medium Metal alloy? with plastic handle
Size cms See tape in picture
Condition Corroded
Notes "Peacemaker"

12. Domestic / children



Location Museum Room Q 1 Third Shelf

More work Rqd. [more info](#)

120 **Maker**
Object Two toy cars red and grey
Medium Plastic
Size cms See tape in picture
Condition
Notes

12. Domestic / children



Location Museum Room Q 1 Third Shelf

More work Rqd. [more info](#)

121 **Maker**
Object Pair of child's patent leather shoes
Medium Leather
Size cms Approx 16 length & See tape in picture
Condition
Notes

12. Domestic / children



Location Museum Room Q 1 Third Shelf

More work Rqd. [more info](#)

142 Maker 12. Domestic / children

Object Toy Boat
 Medium Green painted pine wood
 Size cms 35 x 9.5 x 4.5
 Condition
 Notes



Location Museum Room Q 1

More work Rqd. [more info](#)

151 Maker 12. Domestic / children

Object Blue toy train loco
 Medium Plastic
 Size cms 2.2 cm x 8.0 long x 1.5
 Condition
 Notes Found behind Q2 ?



Location Museum Room Q 1

More work Rqd. [more info](#)

196 Maker 12. Domestic / children

Object HMAS Boonie, toy boat? sign?
 Medium Wood
 Size cms 35.5 x 12.7 cms 1.8 cm depth
 Condition
 Notes



Location Museum Room Q 1

More work Rqd. [more info](#)

206 Maker 12. Domestic / children

Object Toy boat
 Medium Wood, Painted lead to weight in place of keel
 Size cms 8 hl x 59 l x 7
 Condition
 Notes Home made. The boat has lead across the middle - this must have weighted it like a keel.



Location Museum Room Q 1

More work Rqd. [more info](#)

207 **Maker**
Object Toy boat
Medium Wood, Painted
Size cms 7.8 hl x 62.5 x 7
Condition
Notes Home made

12. Domestic / children



Location Museum Room Q 1

More work Rqd. [more info](#)

273 **Maker**
Object School desk
Medium Wood braced with metal
Size cms 69.7 h x 65 x 45
Condition Fair
Notes Originally for Keepers' children last used by Evie and Jonah

12. Domestic / children



Location Q 1

More work Rqd. [more info](#)

274 **Maker**
Object School desk
Medium Wood braced with metal with two stickers
Size cms 66 h x 6.8 x 45.5
Condition Fair
Notes Originally for Keepers' children last used by Evie and Jonah

12. Domestic / children



Location Q 1

More work Rqd. [more info](#)

275 **Maker**
Object Double sided black board
Medium Wood and (masonite core stock) with cord
Size cms 109.3 x 65
Condition
Notes Originally for Keepers' children last used by Evie and Jonah

12. Domestic / children



Location Q 1

More work Rqd. [more info](#)

- 333 **Maker** 12. Domestic / children
Object Toy Boat **1970s?**
Medium Plastic
Size cms 14.5 x 8 x 2
Condition Fair
Notes Found by Sally Bryant March 2013 below the road, south of Olympic dam next to old hut in gully. 10 metres below the road. Was boat "rubbish" or was old hut which was tipped down gully used as a cubby by a child?
Location Museum shelves [More work Rqd.](#) [more info](#)



- 335 **Maker** 12. Domestic / children
Object Child's School chair **1950s?**
Medium Plywood, yellow paint
Size cms 57x 35 x 38
Condition Good
Notes No. 2 Quarters written under seat
Location Q 2 Bedroom North East [More work Rqd.](#) [more info](#)



- 415 **Maker** 12. Domestic / children
Object Child's School chair **1950s?**
Medium Plywood, blue paint
Size cms 89 x 38 x 40
Condition Good
Notes
Location Q 1 [More work Rqd.](#) [more info](#)



- 418 **Maker** 12. Domestic / children
Object Door frame with childrens' heights
Medium Pine marked with text?
Size cms
Condition
Notes Door into Kitchen
Location Q 2 [More work Rqd.](#) [more info](#)



065 **Maker**
Object Bottle, Mercury Tas sparkling cider
Medium Brown Glass
Size cms 28 x 7.5
Condition Good
Notes Left Bottle

13. Domestic / Bottles



Location Museum Room Q 1 (Top shelf)

More work Rqd. [more info](#)

066 **Maker**
Object Bottle, Casade
Medium Clear glass
Size cms 22.8 x 5.5
Condition Good
Notes Centre bottle

13. Domestic / Bottles



Location Museum Room Q 1 (Top shelf)

More work Rqd. [more info](#)

067 **Maker**
Object Bottle, Casade 26 fl oz
Medium Clear glass
Size cms 28.0 x 7.7
Condition Good
Notes RH bottle

13. Domestic / Bottles



Location Museum Room Q 1 (Top shelf)

More work Rqd. [more info](#)

068 **Maker**
Object Pickle jar, A. W. Townsend
Medium Clear glass
Size cms 13 x 5.5
Condition Good
Notes Left hand bottle

13. Domestic / Bottles



Location Museum Room Q 1 (Top shelf)

More work Rqd. [more info](#)

069 **Maker** 13. Domestic / Bottles

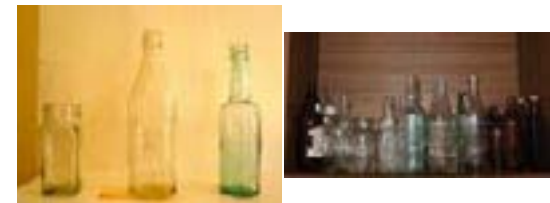
Object Sauce bottle
Medium Clear glass
Size cms 24 x 6.8 cms
Condition Good
Notes Centre bottle, oval Rosella Pres. & Manf. Co. . . . 2970



Location Museum Room Q 1 (Top shelf) [More work Rqd.](#) [more info](#)

070 **Maker** 13. Domestic / Bottles

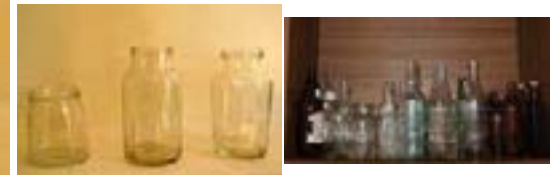
Object Sauce bottle, Holbrooks Worcestershire sauce
Medium Pale green glass, with air bubbles
Size cms 21.8 x 5.7 diam cms
Condition Good
Notes Glass has air bubbles, J on base



Location Museum Room Q 1 (Top shelf) [More work Rqd.](#) [more info](#)

071 **Maker** 13. Domestic / Bottles

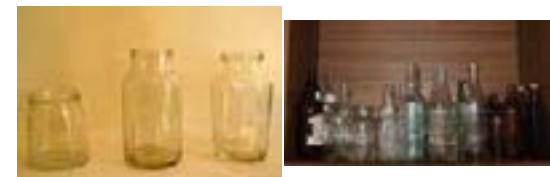
Object ETA Brand jar with flare design Nut foods
Medium clear glass,
Size cms 10 cms x 8. 5. oval widest part
Condition Good
Notes nut foods



Location Museum Room Q 1 (Top shelf) [More work Rqd.](#) [more info](#)

072 **Maker** 13. Domestic / Bottles

Object Jar half jar vertically fluted other half plain
Medium clear glass,
Size cms 15.7 cms x 8.5 diam base 6.00. neck
Condition
Notes This jar always remains the property of John Sutherland and sons Pty Ltd



Location Museum Room Q 1 (Top shelf) [More work Rqd.](#) [more info](#)

- 073 **Maker** 13. Domestic / Bottles
Object Leggo Jar
Medium Clear glass
Size cms 15. x 8.5 widest point
Condition
Notes To contain only Leggos Jams pickles or preserves. This bottle is the property of H M Leggo Co Ltd
- Location** Museum Room Q 1 (Top shelf) [More work Rqd.](#) [more info](#)



- 074 **Maker** 13. Domestic / Bottles
Object Sauce bottle
Medium Clear glass
Size cms 19. x 6.0 approx square
Condition
Notes This bottle always remains the property of Parke Davis & Co. Ltd
- Location** Museum Room Q 1 (Top shelf) [More work Rqd.](#) [more info](#)



- 075 **Maker** 13. Domestic / Bottles
Object Sauce bottle
Medium Clear glass
Size cms 21. x 5.0 approx square
Condition
Notes This bottle always remains C. N. Brooke & Sons property Re No 2767
- Location** Museum Room Q 1 (Top shelf) [More work Rqd.](#) [more info](#)



- 076 **Maker** 13. Domestic / Bottles
Object Sauce bottle
Medium Clear glass
Size cms 23.5. x 6.0 approx square with cut edges
Condition
Notes This bottle is the property of Studley preserving Co. Pty. Ltd
- Location** Museum Room Q 1 (Top shelf) [More work Rqd.](#) [more info](#)



077 Maker 13. Domestic / Bottles

Object Sauce bottle
 Medium Clear glass
 Size cms 23.0 x 6.0 approx round

Condition

Notes Contents 13 oz approx. property of H. Jones & Co Pty Ltd Hobart Tas

Location Museum Room Q 1 (Top shelf)

More work Rqd. [more info](#)



078 Maker 13. Domestic / Bottles

Object Pimms bottle
 Medium Clear with green tinge glass
 Size cms 29 x 7.5 base diam

Condition

Notes This bottle always the property of Pimms Ltd
 Portion number - 1-7 up the size

Location Museum Room Q 1 (Top shelf)

More work Rqd. [more info](#)



079 Maker 13. Domestic / Bottles

Object Wine bottle
 Medium Light green tinged glass
 Size cms 43 x 7.0 approx base diam

Condition

Notes A34 S.3 x on base

Location Museum Room Q 1 (Top shelf)

More work Rqd. [more info](#)



080 Maker 13. Domestic / Bottles

Object Wine bottle
 Medium pale green tinged glass, with distinct bubbles
 Size cms 30 x 7.0 approx base diam

Condition

Notes No 14 plus logo on base

Location Museum Room Q 1 (Top shelf)

More work Rqd. [more info](#)



- 081 **Maker** 13. Domestic / Bottles
Object Sauce bottle
Medium Thick clear glass, with fluted sides octagonal
Size cms 28 x 8.0 approx base across
Condition
Notes This bottle is the property of Williams and sons Pty Ltd Alphington Victoria Australia, bottle loaned Only and cannot be legally used by others.
- Location** Museum Room Q 1 (Top shelf) [More work Rqd.](#) [more info](#)



- 082 **Maker** 13. Domestic / Bottles
Object Sauce bottle
Medium Clear glass, with fluted sides octagonal
Size cms 28.5 x 8.0 approx base across
Condition
Notes The bottle is the property of H. Jones and Co. Pty Ltd Tasmania (written on side of bottle)
- Location** Museum Room Q 1 (Top shelf) [More work Rqd.](#) [more info](#)



- 083 **Maker** 13. Domestic / Bottles
Object Sauce bottle
Medium Clear glass, with fluted sides octagonal
Size cms 28.5 x 8.0 approx base across
Condition
Notes The prop of Rosella Pres & Manf Coy Ltd Rego No 2510 (on base)
- Location** Museum Room Q 1 (Top shelf) [More work Rqd.](#) [more info](#)



- 084 **Maker** 13. Domestic / Bottles
Object Wine bottle with cork
Medium Clear glass, thick heavy base
Size cms 29.0 x 7.5 approx base across
Condition
Notes On Bottom: 039 / A1065 / A
- Location** Museum Room Q 1 (Top shelf) [More work Rqd.](#) [more info](#)



- 085 **Maker** 13. Domestic / Bottles
Object Pino clean bottles (3)
Medium Pale green glass, oval thick glass heavy base
Size cms 23.3. x 9.3 base across widest point
Condition One good condition, one dirty, one broken top
Notes Front:Imperial / Oxford Pino Clean Back: / PINT /around lower bottle /This bottle is the Property of Oxford Polish Co. Australia/
Location Museum Room Q 1 (Top shelf) [More work Rqd.](#) [more info](#)



- 086 **Maker** 13. Domestic / Bottles
Object Spirit Bottle (Stones Green Ginger)?
Medium Dark green glass, round with long neck
Size cms 26 x 8.3 base diam
Condition
Notes Base P & A ?
Location Museum Room Q 1 (Top shelf) [More work Rqd.](#) [more info](#)



- 087 **Maker** 13. Domestic / Bottles
Object Medicine Bottle or Bleach
Medium Thick Brown glass with narrow neck
Size cms 21.5 x 6.8 base diam
Condition
Notes "Keep bottle upright Simpson white King" (on body)
Location Museum Room Q 1 (Top shelf) [More work Rqd.](#) [more info](#)



- 088 **Maker** 13. Domestic / Bottles
Object Dettol Bottle
Medium Amber glass
Size cms 15.2 x 8.5 cm across x 3.8
Condition
Notes With measure marks (table spoons) up side
Location Museum Room Q 1 (Top shelf) [More work Rqd.](#) [more info](#)



089 **Maker**
Object Medicine ? Bottle
Medium Brown glass
Size cms 17.7 x 5 cm base diam
Condition
Notes 1948 A 1046

13. Domestic / Bottles



Location Museum Room Q 1 (Top shelf)

More work Rqd. [more info](#)

090 **Maker**
Object Bottle
Medium Brown square glass
Size cms 21.2 x 4.7 cm base across
Condition
Notes

13. Domestic / Bottles



Location Museum Room Q 1 (Top shelf)

More work Rqd. [more info](#)

091 **Maker**
Object Rectangular Bottle
Medium Brown glass
Size cms 19.5 x 7.2 x 4.3 base
Condition
Notes 1 on front at base see photo F1159

13. Domestic / Bottles



Location Museum Room Q 1 (Top shelf)

More work Rqd. [more info](#)

092 **Maker**
Object Bottle
Medium Two Brown square glass with corks
Size cms 21.2 (without cork) x 4.7 cm base across
Condition
Notes 4 similar in photo
 One side with label panel . No 1A on bottom edge Base: K 5 see photo

13. Domestic / Bottles



Location Museum Room Q 1 (Top shelf)

More work Rqd. [more info](#)

- 093 **Maker** 13. Domestic / Bottles
Object Bottle
Medium Brown square glass with screw top
Size cms 20.5 x 4.7 cm base across
Condition
Notes 4 similar in photo
 One side with label panel . No 1A on bottom edge Base: K 5 see photo
- Location** Museum Room Q 1 (Top shelf) [More work Rqd.](#) [more info](#)



- 094 **Maker** 13. Domestic / Bottles
Object Bottle
Medium Brown square glass
Size cms 20.1 x 4.7 cm base across
Condition
Notes 4 similar in photo
 One side with label panel . No 1A on bottom edge Base: K 5 see photo
- Location** Museum Room Q 1 (Top shelf) [More work Rqd.](#) [more info](#)



- 095 **Maker** 13. Domestic / Bottles
Object Pino clean Bottle
Medium Brown Oval glass
Size cms 23.5 x 9.2 x 5.9 cm base
Condition
Notes Front: Imperial / Oxford Pino Clean Back: / PINT /around lower bottle /This bottle is the Property of Oxford Polish Co. Australia/
- Location** Museum Room Q 1 (Top shelf) [More work Rqd.](#) [more info](#)



- 096 **Maker** 13. Domestic / Bottles
Object Bottle
Medium Brown oval glass with cork
Size cms 26.8 x 9.6 x 5.7 cm base
Condition
Notes 6 on bottle Logo Base F541 * / M
- Location** Museum Room Q 1 (Top shelf) [More work Rqd.](#) [more info](#)



097 **Maker**
Object Wine Bottle (Penfold)
Medium Brown glass
Size cms 30 x 7.5 cm base
Condition
Notes

13. Domestic / Bottles



Location Museum Room Q 1 (Top shelf)

More work Rqd. [more info](#)

098 **Maker**
Object Jam Jar
Medium Clear glass
Size cms 17.5 x 7.7 cm base
Condition
Notes The property of Australasian Jam Co Pty Ltd Melbourne
 J 261

13. Domestic / Bottles



Location Museum Room Q 1 (Top shelf)

More work Rqd. [more info](#)

109 **Maker**
Object Brown jar with screw top (no top)
Medium Brown glass, imperfect with indent on one side
Size cms 9.8 x 5.2 diam at base
Condition
Notes Kruschen salts written up side
 On base 8 / 2998

13. Domestic / Bottles



Location Museum Room Q 1 Second Shelf

More work Rqd. [more info](#)

110 **Maker**
Object Brown jar with screw top (no top)
Medium Brown glass, thick
Size cms 11 x 7.3 diam at base
Condition
Notes 1942 on base (date)

13. Domestic / Bottles



Location Museum Room Q 1 Second Shelf

More work Rqd. [more info](#)

111 Maker 13. Domestic / Bottles

Object Vegemite Jar
 Medium Clear glass with some ripple imperfection on one side
 Size cms 11 x 7 diam at base
 Condition
 Notes



Location Museum Room Q 1 Second Shelf

More work Rqd. [more info](#)

112 Maker 13. Domestic / Bottles

Object Bovril Jar
 Medium Brown Glass
 Size cms 8 x 6 maximum width
 Condition
 Notes Bovril Limited 203
 Bovril limited on other side Base : U O 5?



Location Museum Room Q 1 Second Shelf

More work Rqd. [more info](#)

113 Maker 13. Domestic / Bottles

Object Small bottle (Medicine)
 Medium Brown Glass
 Size cms 6.7 x 3.5 diam at base
 Condition
 Notes M 44 on base



Location Museum Room Q 1 Second Shelf

More work Rqd. [more info](#)

114 Maker 13. Domestic / Bottles

Object Ink Bottle
 Medium Clear glass
 Size cms 6 cm x 6.8 max. width 4.3 depth
 Condition
 Notes Waterman's / 2 oz 16s / Rego No. / 908853



Location Museum Room Q 1 Second Shelf

More work Rqd. [more info](#)

115 Maker 13. Domestic / Bottles

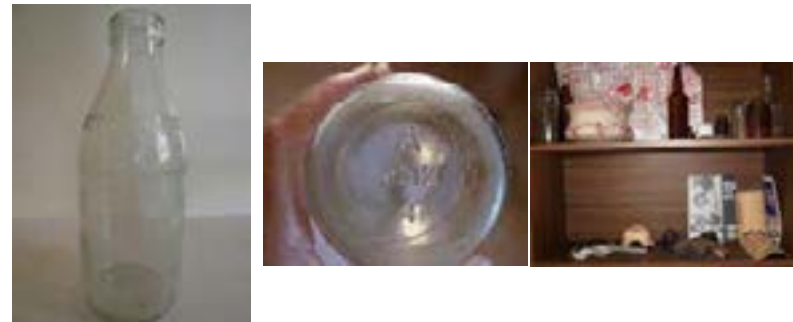
Object Marmite Jar
 Medium White opaque glass
 Size cms 7 cm x 5.8 diam at base
 Condition
 Notes PROPERTY OF MARMITE Company same logo as on some other jars SEE PHOTO



Location Museum Room Q 1 Second Shelf More work Rqd. [more info](#)

116 Maker 13. Domestic / Bottles

Object Milk Bottle
 Medium Clear glass
 Size cms 20.5 cm x 7.7 diam at base
 Condition
 Notes PHOTO of base 2212 / 4 plus the logo



Location Museum Room Q 1 Second Shelf More work Rqd. [more info](#)

117 Maker 13. Domestic / Bottles

Object Pickle? Jar
 Medium Clear glass with very corroded lid
 Size cms 15.5 (includes lid) cm x 15 diam at widest point
 Condition
 Notes PHOTO of base



Location Museum Room Q 1 Second Shelf More work Rqd. [more info](#)

128 Maker 13. Domestic / Bottles

Object Sherry flagon
 Medium Clear glass
 Size cms 28 height diam 14 cm
 Condition
 Notes Perhaps not worth keeping?



Location Museum Room Q 1 Fourth Shelf More work Rqd. [more info](#)

129 Maker

13. Domestic / Bottles

Object Cordial bottles (2)
 Medium Clear glass with leaf motif
 Size cms 28 height diam 14 cm
 Condition
 Notes



Location Museum Room Q 1 Fourth Shelf

More work Rqd. [more info](#)

130 Maker

13. Domestic / Bottles

Object Squared bottle: Aromatic Schnapps / Schiedam / M.P. Pollen &
 Medium Thick glass tinged green with bubbles
 Size cms 24.8 height 7. across cm
 Condition Roughly broken at neck
 Notes



Location Museum Room Q 1 Fourth Shelf

More work Rqd. [more info](#)

131 Maker

13. Domestic / Bottles

Object Coca cola bottle
 Medium Clear glass
 Size cms 30 height 8 diam at base
 Condition Fair
 Notes



Location Museum Room Q 1 Fourth Shelf

More work Rqd. [more info](#)

132 Maker

13. Domestic / Bottles

Object Coca cola bottles (2)
 Medium Clear glass
 Size cms 19.7 height 5.8 diam at base
 Condition Fair
 Notes



Location Museum Room Q 1 Fourth Shelf

More work Rqd. [more info](#)

133 Maker 13. Domestic / Bottles

Object Squared bottle:
 Medium Thick glass tinged green rough cast
 Size cms 18.5 height 5.3 square at base
 Condition Deeply cracked on side, Roughly broken at neck
 Notes



Location Museum Room Q 1 Fourth Shelf

More work Rqd. [more info](#)

134 Maker 13. Domestic / Bottles

Object Cascade
 Medium Clear glass with white paint
 Size cms 27.8 height 8.0 diam at base
 Condition Fair
 Notes



Location Museum Room Q 1 Fourth Shelf

More work Rqd. [more info](#)

135 Maker 13. Domestic / Bottles

Object Cascade
 Medium Clear glass with white paint
 Size cms 22.5 height 5.5 diam at base
 Condition Fair
 Notes



Location Museum Room Q 1 Fourth Shelf

More work Rqd. [more info](#)

137 Maker 13. Domestic / Bottles

Object Rosella Sauce Bottle
 Medium Clear glass, ribbed with clear section for label
 Size cms 21.8 height 6.5 diam at base
 Condition Fair
 Notes On bottle written up side: This bottle belongs to the Rosella Co. Pty. Ltd.
 Reg no. 2969



Location Museum Room Q 1 Fourth Shelf

More work Rqd. [more info](#)

138 Maker

13. Domestic / Bottles

Object Imperial Oxford pino clean (3 bottles)
Medium Clear glass, oval
Size cms 21.8 height 6.5 diam at base
Condition Fair, third one very broken at neck
Notes



Location Museum Room Q 1 Fourth Shelf

More work Rqd. [more info](#)

139 Maker

13. Domestic / Bottles

Object Hunters Bleach?
Medium Finely Ribbed with clear sections glass, oval
Size cms 23.2 height 6.9 length of oval at base
Condition Broken at neck
Notes On bottle written up side Caution not to be taken.
 Property of Hunter Products. This container must not be used for food or drink.



Location Museum Room Q 1 Fourth Shelf

More work Rqd. [more info](#)

248 Maker

13. Domestic / Bottles

Object Glass bottle top
Medium Glass
Size cms 3.4 length diam at top 2.5 (irreg.)
Condition Warn from floating? warn
Notes



Location Museum Room Q 1 Cupboard 3

More work Rqd. [more info](#)

136 Maker

14. Domestic / can

Object Big Boy Lemonade can
Medium Aluminium
Size cms 13 height 6.5 diam at base
Condition Fair
Notes



Location Museum Room Q 1 Fourth Shelf

More work Rqd. [more info](#)

- 059 **Maker** 15. Caretakers Equipment
Object Australian flats x 2 **2011**
Medium Cotton
Size cms
Condition New
Notes Labelled 2 Australian flags kindly donated by Friends of Maatsuyker island for raising on suitable occasions.



Location Tower, First floor (original radio room) [More work Rqd.](#) [more info](#)

- 259 **Maker** Various caretakers 15. Caretakers Equipment
Object Caretakers' Table cloth **2009 -**
Medium Calico Table cloth edged with dark green and white edging
Size cms 175 x 112
Condition Good
Notes This has a number of individual embroideries made by different caretakers as detailed below.



Location Q 1 [More work Rqd.](#) [more info](#)

- 260 **Maker** Meryl & Roger (caretakers) 15. Caretakers Equipment
Object Caretakers' Table cloth **2012**
Medium Calico Table cloth edged with dark green and white edging
Size cms
Condition Good
Notes Individual embroidery of light tower with flags



Location Q 1 [More work Rqd.](#) [more info](#)

- 261 **Maker** Gwen Egg 15. Caretakers Equipment
Object Caretakers' Table cloth embroidery **2012**
Medium Calico Table cloth edged with dark green and white edging
Size cms
Condition Good
Notes Individual embroidery for her second Christmas on Maatsuyker

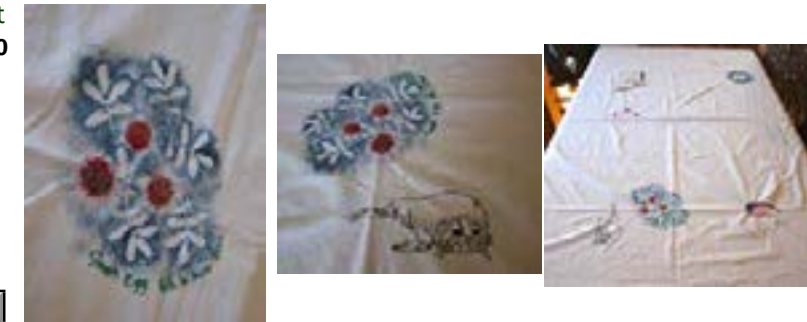


Location Q 1 [More work Rqd.](#) [more info](#)

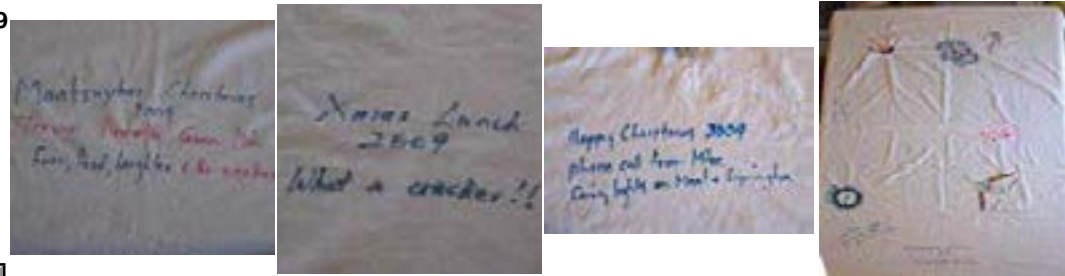
- 262 **Maker** Gwen Egg & Annette 15. Caretakers Equipment
Object Caretakers' Table cloth embroidery **2010**
Medium Calico Table cloth edged with dark green and white edging
Size cms
Condition Fair - stitching good but ink writing washed out.
Notes (Seal)Drawn by Gwen Egg when she was at Maat as a 18 year old. Copied and stitched by Annette caretaker Oct. 09 - Feb. 10. Egg was artist here at that time. How good is that?
Location Q 1 [More work Rqd.](#) YES more info



- 263 **Maker** Gwen Egg 15. Caretakers Equipment
Object Caretakers' Table cloth embroidery **2010**
Medium Calico Table cloth edged with dark green and white edging
Size cms
Condition Good
Notes Flower embroidery signed Gwen Egg Feb. - Aug. 2012
Location Q 1 [More work Rqd.](#) YES more info



- 264 **Maker** Trevor, Annette, Gwen & Marina 15. Caretakers Equipment
Object Caretakers' Table cloth embroidery **2009**
Medium Calico Table cloth edged with dark green and white edging
Size cms
Condition Good
Notes Ink writing in two colours: Maatsuyker Christmas 2009 Trevor, Annette, Gwen and Min. Fun, Food, laughter & the weather also Happy Christmas 2009 Fairly Lights on Maat & Lymington.
Location Q 1 [More work Rqd.](#) YES more info



- 265 **Maker** Marina Campbell 15. Caretakers Equipment
Object Caretakers' Table cloth embroidery **2012**
Medium Calico Table cloth edged with dark green and white edging
Size cms
Condition Good
Notes Image of sheerwater and moon - Min Feb.- Aug.' 12
Location Q 1 [More work Rqd.](#) more info



- 266 **Maker** Marsha & Marg 15. Caretakers Equipment
Object Caretakers' Table cloth embroidery **2012**
Medium Calico Table cloth edged with dark green and white edging
Size cms
Condition Good
Notes Pink Robin - Marsha & Marg Dec. 2011 Jan 2012



Location Q 1

More work Rqd. YES more info

- 267 **Maker** Evie Hamilton 15. Caretakers Equipment
Object Caretakers' Table cloth embroidery **2010**
Medium Calico Table cloth edged with dark green and white edging
Size cms
Condition Good
Notes Drawing in Texta of figure - Evie 2010



Location Q 1

More work Rqd. more info

- 268 **Maker** Jonah Hamilton 15. Caretakers Equipment
Object Caretakers' Table cloth embroidery **2010**
Medium Calico Table cloth edged with dark green and white edging
Size cms 175 x 112
Condition Good
Notes Drawing in Texta of Dave (the truck) Jonah 2010



Location Q 1

More work Rqd. more info

- 269 **Maker** Annette Walsh 15. Caretakers Equipment
Object Tea Cosy **2009**
Medium Ugg Boots and Australian Flags
Size cms 15 x 15 Irreg. diam
Condition Fair - shows tea staining
Notes This was made by Annette - caretaker



Location Q 1

More work Rqd. YES more info

- 270 **Maker** Annette?
Object Hot hands
Medium Corduroy and cotton material
Size cms 20 x 15 cms
Condition Good
Notes Made by Annette ?

15. Caretakers Equipment

2009



Location Q 1

More work Rqd. YES more info

- 271 **Maker** Caretaker - who?
Object Hot hands
Medium Old flannelette or baby blanket
Size cms 20 x 14 cms
Condition
Notes

15. Caretakers Equipment

2011



Location Q 1

More work Rqd. YES more info

- 272 **Maker** Caretaker - who? Jan 2012
Object Maatsuyker Island Croquet Cup
Medium Old aluminium saucepan with Tea tree wood base
Size cms 26.3 x 12.6
Condition Good
Notes Label: Maat Croquet Cup / Inaugural Match 02 day 2012/ Cup Champion Marsha Durham

15. Caretakers Equipment

2012



Location Q 1

More work Rqd. YES more info

- 279 **Maker** Caretaker
Object Tray
Medium Island T Tree and old boards
Size cms 70.5 x 34 x 10 full depth at handle
Condition Good
Notes Who made this?

15. Caretakers Equipment



Location Q 1

More work Rqd. YES more info

280 **Maker** 15. Caretakers Equipment

Object Childrens sledge?

2010

Medium Reused pine boards

Size cms 63. x 41.5 full height with lamp x 25

Condition Good

Notes Recent caretakers - Sheryl Hamilton?



Location Q 1

More work Rqd. [more info](#)

281 **Maker** 15. Caretakers Equipment

Object School Bell

2010

Medium Piece of steel with cord and fishing weight

Size cms 16.5 x 7.3 diam

Condition Good

Notes



Location Q 1

More work Rqd. [more info](#)

276 **Maker** 16. House fittings

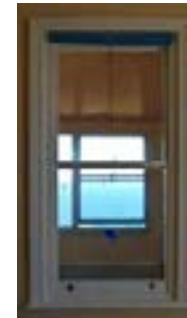
Object Brass window handles 2 painted in SE bedroom and two

Medium Brass

Size cms 5.7 x 5 x 3.2

Condition

Notes These windows are original sash windows



Location Q 1

More work Rqd. [more info](#)

278 **Maker** 16. House fittings

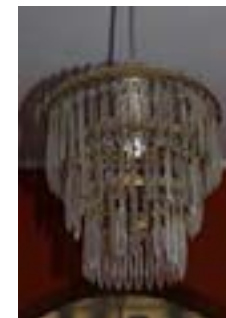
Object Two Chandeliers

Medium Plastic crystals and metal

Size cms 26.5 x 26 cms

Condition Good

Notes I remember these being a great thing to have in the late 60s in UK!



Location Q 1

More work Rqd. [more info](#)

336 **Maker**
Object Wonderheat Heater
Medium Plywood, yellow paint
Size cms 66 x 80 including tile surround
Condition Not serviceable - with tag
Notes

16. House fittings
1960s?



Location Q 2 Bedroom North East

More work Rqd. [more info](#)

337 **Maker**
Object 1890s fireplace mantle
Medium Wood - painted white
Size cms 122 x 162
Condition Good - painted with high gloss paint.
Notes

16. House fittings
1890



Location Q 2 Bedroom North East

More work Rqd. [more info](#)

338 **Maker**
Object 1890s fireplace mantle
Medium Wood - painted Blue
Size cms 122 x 162
Condition Good - painted with high gloss paint.
Notes

16. House fittings
1890



Location Q 2 Bedroom North West

More work Rqd. [more info](#)

339 **Maker**
Object 1890s fireplace mantle
Medium Wood - painted yellow
Size cms 120 x 162
Condition Good - painted with high gloss paint.
Notes

16. House fittings
1890



Location Q 2 Bedroom South East

More work Rqd. [more info](#)

340 Maker

Object 1890s fireplace mantle

Medium Wood - painted white and grey

Size cms 122 x 160

Condition Good - painted with high gloss paint.

Notes Copper sheeting filled out old fire place

16. House fittings

1890



Location Q 2 Bedroom South West

More work Rqd. [more info](#)

343 Maker

Object 7 coat hooks on wooden board

Medium Metal and wood painted red

Size cms Base plate 185 x 15 , Hooks approx 15.0 cms high

Condition Good, heavily painted with gloss red.

Notes

16. House fittings



Location Q 2 Passageway

More work Rqd. [more info](#)

344 Maker

Object Pantry "meat safe" cupboard

Medium Wood, Possibly Oak, varnished with mesh sides and doors

Size cms 111.5 high x 169 x 46.5 Hooks approx 15.0 cms high

Condition Good, varnished wood

Notes

16. House fittings

1950s?



Location Q 2 Pantry

More work Rqd. [more info](#)

346 Maker

Object Pantry "meat safe" cupboard

Medium Wood, Possibly Oak, varnished with mesh sides and doors

Size cms 111.5 high x 169 x 46.5 Hooks approx 15.0 cms high

Condition Good, varnished wood

Notes

16. House fittings

1950s?



Location Q 3 Pantry

More work Rqd. [more info](#)

347 Maker

16. House fittings

Object 4 Windows

1890s?

Medium Wood, several layers of paint

Size cms 112 high x 123 irreg.; 12 panes each: 39.5 x 33

Condition Poor: 2 reasonably intact, 2 partially intact; other parts separate

Notes These came from southern verandah at Q1 originally?



Location Q 3 Pantry

More work Rqd. [more info](#)

349 Maker

16. House fittings

Object 1890s fireplace mantle

1890s?

Medium Painted wood

Size cms 122 x 158

Condition Good

Notes



Location Q 3 Bedroom North East

More work Rqd. [more info](#)

350 Maker

16. House fittings

Object 1890s fireplace mantle

1890s?

Medium Painted wood

Size cms 122 x 158

Condition Good

Notes



Location Q 3 Bedroom North West

More work Rqd. [more info](#)

351 Maker

16. House fittings

Object 1890s fireplace mantle

1890s?

Medium Painted wood

Size cms 122 x 158

Condition Good

Notes



Location Q 3 Bedroom South East

More work Rqd. [more info](#)

352 Maker

16. House fittings

Object 1890s fireplace mantle

1890s?

Medium Painted wood

Size cms 122 x 158

Condition Good

Notes With brass plate across fireplace, same as in mantle in Q 2



Location Q 3 Bedroom South East

More work Rqd. [more info](#)

353 Maker

16. House fittings

Object 1890s Wall vents

1890s?

Medium Painted Metal

Size cms 18 x 26 approx (guessed)

Condition Good

Notes These are in many rooms, often placed high above the fireplace



Location Q 3 Bedroom South East

More work Rqd. [more info](#)

354 Maker

16. House fittings

Object Window

1890s?

Medium Painted wood

Size cms 57 x 70 (window itself)

Condition Fair - recent maintenance visible

Notes This is an example of the older style window, of which there would have been many. It matches the old much larger one stored in Q3 pantry



Location Q 3 South Verandah

More work Rqd. [more info](#)

149 Maker

17. Outdoors

Object Gun cartridge Winchester Australia 12 bore

Medium Blue plastic

Size cms 6.8 x 2.0 diam at end cms

Condition

Notes



Location Museum Room Q 1

More work Rqd. [more info](#)

159 Maker

17. Outdoors

Object Rabbit trap
 Medium Rusted metal
 Size cms 31 cms full length
 Condition Very rusted and fragile
 Notes



Location Museum Room Q 1

More work Rqd. [more info](#)

292 Maker Keepers

17. Outdoors

Object Water tank
 Medium Concrete
 Size cms 133 x 185 diam

Condition
 Notes Originally this would have been an iron tank. As it rusted it was repaired inside with concrete and mesh wire . Finally the original corrugated metal rusts and is removed.



Location Track: near paint shed

More work Rqd. [more info](#)

294 Maker Parks & Wildlife / Caretakers

17. Outdoors

Object Wind generator mast
 Medium Iron
 Size cms

Condition
 Notes This was installed in 2007? but due to the extreme winds was unworkable and discarded.



Location Track: near fuel tanks

More work Rqd. [more info](#)

295 Maker

17. Outdoors

Object Box for fire extinguisher
 Medium Metal, painted red
 Size cms Box 91.5 x91 x40.5

Condition
 Notes This box is by the fuel tanks up the track from the tower and generator shed. There were others around the Island in places where fuel was stored.



Location Track near fuel tanks South of Island

More work Rqd. [more info](#)

- 297 **Maker** 17. Outdoors
Object Water tanks discarded down gully near Olympic dam
Medium Corrugated iron
Size cms
Condition
Notes Rubbish was discarded in the gullies - no thought was given at the time for the Island's environment.
- Location** Track: lower side, just near the Olympic pool. **More work Rqd.** [more info](#)



- 298 **Maker** 17. Outdoors
Object "Olympic dam"
Medium
Size cms
Condition
Notes This was constructed to store the Island's only fresh water supply. It was discarded for use?
- Location** Olympic dam **More work Rqd.** [more info](#)



- 403 **Maker** 17. Outdoors
Object Pipes/railings access sections **1920s?**
Medium Metal pipe section, with rubber and fibre inserts
Size cms Access section in pipe approx. 93 cms. long
Condition Good
Notes Around the island there are old pipes which seem to be positioned to double as road side markers and conduits communications and water.
- Location** Various parts of roadside **More work Rqd.** [more info](#)



- 404 **Maker** Keepers 17. Outdoors
Object Childrens' cubby house **1960s?**
Medium Wood fibreboard & some asbestos sheeting
Size cms 190 H. from ground, 142 wide 125 depth
Condition Poor
Notes This was built for some keepers' children. Since the understanding of the dangers of asbestos it has been boarded over.
- Location** Located behind Q2 **More work Rqd.** [more info](#)



405 Maker

Object Double sink

Medium Concrete with metal edge

Size cms 140 x 54 x 35 cms.

Condition Poor

Notes The old double sink reused as a garden planter.

17. Outdoors

1890s?



Location Located behind Q2

More work Rqd. [more info](#)

407 Maker Keeper

Object Barbecue

Medium Built out of old interior fire box and brickwork

Size cms Height to top 78 cms. x 95, 80 approx. full depth with chimney

Condition

Notes

17. Outdoors

1960s?



Location Back of Q 2

More work Rqd. [more info](#)

410 Maker

Object Unknown

Medium Iron

Size cms 49 x 35 x 10

Condition Poor very rusted

Notes This seems likely to be something to do with the old haulage system. It is the same sort of metal and in the same condition.

17. Outdoors



Location Outside Q1 near gate in fence and steps

More work Rqd. [more info](#)

417 Maker

Object Helipad

Medium Concrete - painted

Size cms

Condition Poor

Notes This is likely to be repaired or replaced as damage is critical - these photos record it and the paintings done by Evie & Jonah Hamilton

17. Outdoors



Location Helipad

More work Rqd. [more info](#)

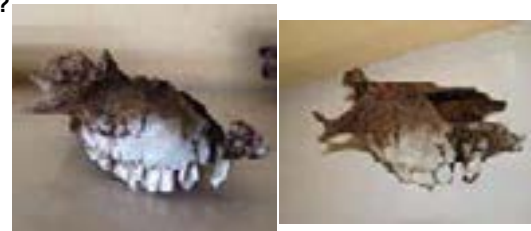
- 419 **Maker** Keepers 17. Outdoors
Object Brick garden bed with Hydrangea
Medium
Size cms 34h x 120 x 94 deep cms. approx.
Condition
Notes This is a magnificent hydrangea and as it cannot and does not spread has been left in spite of many weed clearing expeditions.
- Location** Behind Q3 More work Rqd. [more info](#)



- 402 **Maker** Gwen Egg 17. Outdoors: artwork
Object Sculptural hen 2012
Medium Papier Mache
Size cms 38 x 60 x 20 approx.
Condition Good
Notes Made by Gwen Egg when artist in residence and placed in the old hen house.
- Location** Hen house More work Rqd. [more info](#)



- 399 **Maker** 17. Outdoors: farming
Object Sheep's skull 1980s?
Medium Bone
Size cms 7h x 16 x 10 (2 sides together)
Condition Poor
Notes Found in ground edge of mowed section near orchard by Rosanna Cameron
 2013
 Kept to illustrate remains of farming life on the Island.
- Location** Museum Room Q 1 More work Rqd. [more info](#)



- 400 **Maker** 17. Outdoors: farming
Object Cow skull 1980s?
Medium Bone
Size cms
Condition Poor
Notes This could have been one that rested in a tree below the helipad for some years. Since 2005 the path has collapsed was it placed here for safekeeping? Kept to illustrate remains of farming life on the Island.
- Location** Hen house More work Rqd. [more info](#)



- 401 **Maker** 17. Outdoors: farming
Object Various other animal skulls **1980s?**
Medium Bone
Size cms
Condition Poor
Notes Kept to illustrate remains of farming life on the Island.



Location Hen house [More work Rqd.](#) [more info](#)

- 293 **Maker** Keepers 18. Buildings
Object Paint Shed
Medium Various materials
Size cms Windows: 146 x 94
Condition
Notes Objects inside - current. But shed is an example of a well kept but much adapted building - note steps out of place. The original sash windows are still on building.



Location Track: near paint shed [More work Rqd.](#) [more info](#)

- 302 **Maker** Keepers 18. Buildings
Object Red Shed (fuel)
Medium Corrugated iron
Size cms
Condition
Notes This is one of various buildings on the Island. Latterly this was used for fuel storage.



Location Track: Top of hill near old helipad [More work Rqd.](#) [more info](#)

- 307 **Maker** Keepers/Contractors 18. Buildings
Object Whim shed **1940**
Medium Fibro and Wood
Size cms
Condition Fair
Notes This shed was originally built to house the wheel for the horse drawn winch. When the diesel powered motors came along the simply extended the front of the shed leaving the old mechanism at the back.



Location Whim shed [More work Rqd.](#) [more info](#)

432 Maker

18. Buildings

Object Stable

Medium

Size cms

Condition

Notes The remains of this building are being covered by vegetation. These 2005 photographs record it as it was then.



Location Below helipad on track.

More work Rqd. [more info](#)

156 Maker

19. Geology

Object Rock sample

Medium Petrified ?

Size cms 18 x 13.5 x 9.5

Condition

Notes Big lumps of this rock came down with the landslide at Garney's Gap 26th April 2012.



Location Museum Room Q 1

More work Rqd. [more info](#)

105 Maker

20. Natural History

Object 3 Sheerwater eggs

Medium Egg shells

Size cms see ruler in photo

Condition

Notes



Location Museum Room Q 1 Second Shelf

More work Rqd. [more info](#)

106 Maker

20. Natural History

Object Bird skull

Medium Bone

Size cms see ruler in photo

Condition

Notes



Location Museum Room Q 1 Second Shelf

More work Rqd. [more info](#)

- 305 **Maker** Keepers & caretakers **20. Natural History**
Object Bird bridges **1940**
Medium Wooden (various recycled bits of timber)
Size cms Various
Condition Good
Notes These little bird bridges appear all along the track and give the birds a way over the culverts so that they do not break down the soil and block the drains as they go to their nests. This is not of intrinsic "value" but recording this contributes to a
Location Track [More work Rqd.](#) [more info](#)



- 334 **Maker** **20. Natural History**
Object Lobster sculpture **2005?**
Medium Black currant root from the Island
Size cms 49 cm L x 15 cm H
Condition Good
Notes Made by weed volunteer and kept in Q2 as a reminder of all the work carried out to eradicate weeds.
Location Q 2 [More work Rqd.](#) [more info](#)



- 140 **Maker** **21. Island History**
Object Life Ring from Dalila Tum
Medium Plastic with rope handles
Size cms Outer diam 77 cms , inner diam 45 cms 12. depth
Condition Fair
Notes The fishing vessel Dalila dragged her anchor off Maatsuyker Island on the morning of 4 June 1984. Where she became a total loss. See printed paper
Location Museum Room Q 1 [More work Rqd.](#) [more info](#)



- 287 **Maker** Keeper **21. Island History**
Object Dog foot prints in concrete outside Q1
Medium Concrete
Size cms Area approx 14 x 10 cms - variable
Condition
Notes A keeper's dog - as no dogs on island since.
Location Q 1 [More work Rqd.](#) [more info](#)



21. Island History

288 **Maker** Keeper
Object Makers mark in concrete steps Q1
Medium Concrete
Size cms Area approx 28 x 38 variable
Condition
Notes OB & DC 89



Location Q 1

More work Rqd. [more info](#)

22. Flotsam!

197 **Maker**
Object 2 broken oars, one with rowlock attached
Medium Wood
Size cms 1) 135.0 2) 162.5
Condition
Notes



Location Museum Room Q 1

More work Rqd. [more info](#)

22. Flotsam!

238 **Maker**
Object 7 parts of floaties
Medium Polystyrene
Size cms See Photo
Condition Poor
Notes Not worth keeping?



Location Museum Room Q 1 Cupboard 3

More work Rqd. [more info](#)

22. Flotsam!

242 **Maker**
Object One door latch from boat?
Medium Wood
Size cms See photo
Condition Poor
Notes Flotsam? or where was it found?



Location Museum Room Q 1 Cupboard 3

More work Rqd. [more info](#)

141 **Maker** 23. Signs

Object Lighthouse direction sign
Medium Wood with painted lettering
Size cms 86 x 21 cms x 1.7 cms
Condition
Notes



Location Museum Room Q 1

More work Rqd. [more info](#)

147 **Maker** Peter Blackwell 23. Signs

Object Sign "Peter's Pumpkin Palace"
Medium Painted Wood sign
Size cms 17.5 tall 38 long 1.8 depth
Condition Fair
Notes Peter Blackwell worked as a Light keeper on Maatsuyker Island and lived in Q 3. 29 July 1966 - 2 Dec. 1977. He painted the sign and attached it to the gate.



Location Museum Room Q 1

More work Rqd. [more info](#)

299 **Maker** Caretaker? 23. Signs

Object Olympic dam sign
Medium Wooden sign
Size cms Sign: 60 x 15 x 4; Pole height: 90
Condition
Notes Made by recent caretaker.

2008?



Location Track: near Olympic dam

More work Rqd. [more info](#)

345 **Maker** 23. Signs

Object Sign
Medium Wood, varnished and painted
Size cms 30 high x 9.5 x 1.6
Condition Good, varnished wood
Notes

1950s?



Location Q 3 By back door

More work Rqd. [more info](#)

- 397 **Maker** 23. Signs
pre 2005
- Object** Garden Sign
- Medium** Wood
- Size cms** 16 x 40 approx. (Guessed)
- Condition** Good
- Notes** Made by caretaker
Second picture shows sign in 2005 - either present one is repainted or the old one blew away.
- Location** Outside, by garden West of Q 2 & 3 [More work Rqd.](#) [more info](#)



- 398 **Maker** 23. Signs
2006-2013
- Object** Orchard sign
- Medium** Wood
- Size cms** 15 x 31 approx. (Guessed)
- Condition** Good
- Notes** Made by caretaker
- Location** Outside, by Orchard South West of Q 2 & 3 [More work Rqd.](#) [more info](#)



- 406 **Maker** ? Caretaker 23. Signs
2006-2013
- Object** Direction for lost lids
- Medium** Wood
- Size cms** 18 x 70 approx. (Guessed)
- Condition** Good
- Notes** Made by caretaker. The rain water gauge lid is frequently blown into this spot.
- Location** Outside, by Orchard South West of Q 2 & 3 [More work Rqd.](#) [more info](#)



- 148 **Maker** 24. Signs: Keepers Tree
- Object** Remnant of plaque found by Keeper's Tree
- Medium** Plywood with varnish
- Size cms** 8.0 Variable x 9 cms
- Condition** Very frail
- Notes** an 82 and G L .. KEEPE.. VIC can be deciphered
- Location** Museum Room Q 1 [More work Rqd.](#) [more info](#)



- 355 **Maker** Various 24. Signs: Keepers Tree
Object Keepers' Tree overall view **1964-2013**
Medium
Size cms
Condition Good
Notes These name tags have been placed on the "Keepers' Tree" at the top of the Island, further up the track above "Macquarie Plains". They mark the times of Keepers' and caretakers' stays. Each is made by the people shown.
Location Outdoors - Keepers Tree [More work Rqd.](#)



- 356 **Maker** Blackwell, Peter 24. Signs: Keepers Tree
Object Sign: many members of the Blackwell family **1968-2012**
Medium
Size cms
Condition Fair - sap stain across middle
Notes These name tags have been placed on the "Keepers' Tree" at the top of the Island, further up the track above "Macquarie Plains". They mark the times of Keepers' and caretakers' stays. Each is made by the people shown.
Location Outdoors - Keepers Tree [More work Rqd.](#)



- 357 **Maker** Courtney, Clark 24. Signs: Keepers Tree
Object Sign: David & Diane, Damien Darren, Courtney Clark **1968-2012 N/D**
Medium
Size cms
Condition Fair
Notes These name tags have been placed on the "Keepers' Tree" at the top of the Island, further up the track above "Macquarie Plains". They mark the times of Keepers' and caretakers' stays. Each is made by the people shown.
Location Outdoors - Keepers Tree [More work Rqd.](#)



- 358 **Maker** Weldon D. Barry, D. 24. Signs: Keepers Tree
Object Sign: Weldon, Douglas, Daphne Barry (12 Corinth Street Howrah ?) **1968-2012 N/D**
Medium
Size cms
Condition Fair, parts obscured
Notes These name tags have been placed on the "Keepers' Tree" at the top of the Island, further up the track above "Macquarie Plains". They mark the times of Keepers' and caretakers' stays. Each is made by the people shown.
Location Outdoors - Keepers Tree [More work Rqd.](#)



- 359 **Maker** Parsey, Tony & Robyn 24. Signs: Keepers Tree
Object Sign: Parsey Tony & Robyn, Craig & Emma 28.3.73 - 19.4.75 1973
Medium
Size cms
Condition Good
Notes These name tags have been placed on the "Keepers' Tree" at the top of the Island, further up the track above "Macquarie Plains". They mark the times of Keepers' and caretakers' stays. Each is made by the people shown.
Location Outdoors - Keepers Tree [More work Rqd.](#)
-
- 360 **Maker** 24. Signs: Keepers Tree
Object Sign: Launceston Walking Club Film Trip 28 Dec., 1975 - 5th 1975
Medium
Size cms
Condition Fair
Notes These name tags have been placed on the "Keepers' Tree" at the top of the Island, further up the track above "Macquarie Plains". They mark the times of Keepers' and caretakers' stays. Each is made by the people shown.
Location Outdoors - Keepers Tree [More work Rqd.](#)
-
- 361 **Maker** Brent, E & Berends T. 24. Signs: Keepers Tree
Object Sign: E. Brent, & T. Berends & A. Sculthorpe 1975 & 1976 1975
Medium
Size cms
Condition Fair, light stain
Notes These name tags have been placed on the "Keepers' Tree" at the top of the Island, further up the track above "Macquarie Plains". They mark the times of Keepers' and caretakers' stays. Each is made by the people shown.
Location Outdoors - Keepers Tree [More work Rqd.](#)
-
- 362 **Maker** Clarke, Steve 24. Signs: Keepers Tree
Object Sign: Steve Clarke 22.9.78 1978
Medium Lead?
Size cms
Condition Fair
Notes These name tags have been placed on the "Keepers' Tree" at the top of the Island, further up the track above "Macquarie Plains". They mark the times of Keepers' and caretakers' stays. Each is made by the people shown.
Location Outdoors - Keepers Tree [More work Rqd.](#)



- 363 **Maker** Cook, J. W. 24. Signs: Keepers Tree
Object Sign: J. W. Cook & L. M. Cook 1971 - 1978 **1978**
Medium Aluminium?
Size cms
Condition Rusted, this was original; remade above
Notes These name tags have been placed on the "Keepers' Tree" at the top of the Island, further up the track above "Macquarie Plains". They mark the times of Keepers' and caretakers' stays. Each is made by the people shown.
Location Outdoors - Keepers Tree [More work Rqd.](#)



- 364 **Maker** Cook, J. W. 24. Signs: Keepers Tree
Object Sign: J. W. Cook & L. M. Cook 1971 - 1978 **1978, 2012**
Medium Aluminium?
Size cms
Condition Good - this is likely to be a replacement sign installed 2012?
Notes These name tags have been placed on the "Keepers' Tree" at the top of the Island, further up the track above "Macquarie Plains". They mark the times of Keepers' and caretakers' stays. Each is made by the people shown.
Location Outdoors - Keepers Tree [More work Rqd.](#)



- 365 **Maker** Parsey 24. Signs: Keepers Tree
Object Sign: Parsey Family returned Holiday 15.8.80 **1980**
Medium
Size cms
Condition Fair - parts hard to read
Notes These name tags have been placed on the "Keepers' Tree" at the top of the Island, further up the track above "Macquarie Plains". They mark the times of Keepers' and caretakers' stays. Each is made by the people shown.
Location Outdoors - Keepers Tree [More work Rqd.](#)



- 366 **Maker** Parsey, Tony English, Jim 24. Signs: Keepers Tree
Object Sign: Tony Parsey, Jim English 10/15 2 1990 **1990**
Medium
Size cms
Condition Fair
Notes These name tags have been placed on the "Keepers' Tree" at the top of the Island, further up the track above "Macquarie Plains". They mark the times of Keepers' and caretakers' stays. Each is made by the people shown.
Location Outdoors - Keepers Tree [More work Rqd.](#)



- 367 **Maker** Thompson, Albert 24. Signs: Keepers Tree
Object Albert Thompson 27-4-1990 / 15-10-1990 **1990**
Medium
Size cms
Condition Good
Notes These name tags have been placed on the "Keepers' Tree" at the top of the Island, further up the track above "Macquarie Plains". They mark the times of Keepers' and caretakers' stays. Each is made by the people shown.
Location Outdoors - Keepers Tree [More work Rqd.](#)
-
- 368 **Maker** Barrett, Owen L, Clark, David B 24. Signs: Keepers Tree
Object Sign: Maatsuyker island Centenary 1st June - 1991 Keepers: **1991**
Medium Stainless steel
Size cms
Condition Good
Notes These name tags have been placed on the "Keepers' Tree" at the top of the Island, further up the track above "Macquarie Plains". They mark the times of Keepers' and caretakers' stays. Each is made by the people shown.
Location Outdoors - Keepers Tree [More work Rqd.](#)
-
- 369 **Maker** Levings, Adrian 24. Signs: Keepers Tree
Object Adrian Levings 01.04.94 - 02.05/94 **1994**
Medium
Size cms
Condition Good
Notes These name tags have been placed on the "Keepers' Tree" at the top of the Island, further up the track above "Macquarie Plains". They mark the times of Keepers' and caretakers' stays. Each is made by the people shown.
Location Outdoors - Keepers Tree [More work Rqd.](#)
-
- 370 **Maker** Konkes, C & Pigott Katie 24. Signs: Keepers Tree
Object Sign: Chris Konkes & Katie Pigott; May - Nov. 1999 **1999**
Medium
Size cms
Condition Fair, brown stains
Notes These name tags have been placed on the "Keepers' Tree" at the top of the Island, further up the track above "Macquarie Plains". They mark the times of Keepers' and caretakers' stays. Each is made by the people shown.
Location Outdoors - Keepers Tree [More work Rqd.](#)



- 371 **Maker** French, J & Karen 24. Signs: Keepers Tree
Object Sign: French John, Karen & Matthew (5 mths) Aug-Nov 2000 C'takers **2000**
Medium
Size cms
Condition Good
Notes These name tags have been placed on the "Keepers' Tree" at the top of the Island, further up the track above "Macquarie Plains". They mark the times of Keepers' and caretakers' stays. Each is made by the people shown.
Location Outdoors - Keepers Tree [More work Rqd.](#)
-
- 372 **Maker** Fairbrother, S Kay Lynette 24. Signs: Keepers Tree
Object Sign: Lynette Kay & Scott Fairbrother, Volunteers Aug-Nov 2001 **2001**
Medium
Size cms
Condition Fragile
Notes These name tags have been placed on the "Keepers' Tree" at the top of the Island, further up the track above "Macquarie Plains". They mark the times of Keepers' and caretakers' stays. Each is made by the people shown.
Location Outdoors - Keepers Tree [More work Rqd.](#)
-
- 373 **Maker** Hocking, D. Abbot, D. Thiele J. 24. Signs: Keepers Tree
Object Dianne Hocking, Dave Abbott & Jill Thiele (relative of Peter & Ken) **2001**
Medium
Size cms
Condition Good
Notes These name tags have been placed on the "Keepers' Tree" at the top of the Island, further up the track above "Macquarie Plains". They mark the times of Keepers' and caretakers' stays. Each is made by the people shown.
Location Outdoors - Keepers Tree [More work Rqd.](#)
-
- 374 **Maker** Wills, R & Scott F 24. Signs: Keepers Tree
Object Sign: Rob Wills Fiona Scott Aug. 2003 to Feb. 2004 **2004**
Medium
Size cms
Condition Good
Notes These name tags have been placed on the "Keepers' Tree" at the top of the Island, further up the track above "Macquarie Plains". They mark the times of Keepers' and caretakers' stays. Each is made by the people shown.
Location Outdoors - Keepers Tree [More work Rqd.](#)



- 375 **Maker** Weetman, Nick 24. Signs: Keepers Tree
Object Sign: Nick Weetman & Rosanna Cameron February - May 2005 **2005**
Medium Copper
Size cms
Condition Fair, good green patina developing
Notes These name tags have been placed on the "Keepers' Tree" at the top of the Island, further up the track above "Macquarie Plains". They mark the times of Keepers' and caretakers' stays. Each is made by the people shown.
Location Outdoors - Keepers Tree [More work Rqd.](#)
-
- 376 **Maker** St. Leger, B & M 24. Signs: Keepers Tree
Object Sign: Marcelle, Bill St Leger 4/10/05 - 28/12/05; 15/1/06 - **2005**
Medium Iron
Size cms
Condition Good
Notes These name tags have been placed on the "Keepers' Tree" at the top of the Island, further up the track above "Macquarie Plains". They mark the times of Keepers' and caretakers' stays. Each is made by the people shown.
Location Outdoors - Keepers Tree [More work Rqd.](#)
-
- 377 **Maker** Woolmer, P & Buller, L 24. Signs: Keepers Tree
Object Louise Buller + Paul Woolmer 6th June - 10th October 2005 **2005**
Medium
Size cms
Condition Good
Notes These name tags have been placed on the "Keepers' Tree" at the top of the Island, further up the track above "Macquarie Plains". They mark the times of Keepers' and caretakers' stays. Each is made by the people shown.
Location Outdoors - Keepers Tree [More work Rqd.](#)
-
- 378 **Maker** Abbas, Horton 24. Signs: Keepers Tree
Object Sign: Bryony Nabil and Horton Abbas 05.02.06 - 05.06.06 **2006**
Medium Aluminium?
Size cms
Condition Good
Notes These name tags have been placed on the "Keepers' Tree" at the top of the Island, further up the track above "Macquarie Plains". They mark the times of Keepers' and caretakers' stays. Each is made by the people shown.
Location Outdoors - Keepers Tree [More work Rqd.](#)



- 379 **Maker** Reid, Phillip & Brady, Ailsa 24. Signs: Keepers Tree
Object Sign: Ailsa Brady, Phillip Reid, Caretakers 4 June - 1 Oct. 2007 **2007**
Medium
Size cms
Condition Fair, brown stains
Notes These name tags have been placed on the "Keepers' Tree" at the top of the Island, further up the track above "Macquarie Plains". They mark the times of Keepers' and caretakers' stays. Each is made by the people shown.
Location Outdoors - Keepers Tree [More work Rqd.](#)
-
- 380 **Maker** Tad, & Suzy 24. Signs: Keepers Tree
Object Sign: Tad & Suzy Oct. 08 - Feb. 08 **2008**
Medium
Size cms
Condition Good
Notes These name tags have been placed on the "Keepers' Tree" at the top of the Island, further up the track above "Macquarie Plains". They mark the times of Keepers' and caretakers' stays. Each is made by the people shown.
Location Outdoors - Keepers Tree [More work Rqd.](#)
-
- 381 **Maker** Walsh, Trevor & Annette 24. Signs: Keepers Tree
Object Trevor & Annette Walsh, 2 June - 29 Sept. 08; 9 Oct. 09 - 8 Feb. 10 **2009**
Medium Iron
Size cms
Condition Fair, small rust stain
Notes These name tags have been placed on the "Keepers' Tree" at the top of the Island, further up the track above "Macquarie Plains". They mark the times of Keepers' and caretakers' stays. Each is made by the people shown.
Location Outdoors - Keepers Tree [More work Rqd.](#)
-
- 382 **Maker** Walker, J & L 24. Signs: Keepers Tree
Object Sign: John & Lorraine Walker Feb. 2009 - June 2009 **2009**
Medium
Size cms
Condition Good
Notes These name tags have been placed on the "Keepers' Tree" at the top of the Island, further up the track above "Macquarie Plains". They mark the times of Keepers' and caretakers' stays. Each is made by the people shown.
Location Outdoors - Keepers Tree [More work Rqd.](#)



- 383 **Maker** Wiltshire , A ; Hamilton, Sheryl 24. Signs: Keepers Tree
Object Sign:Al Wiltshire & Sheryl Hamilton Jonah(7) & Evie(4) Feb-May 2010 **2010**
Medium
Size cms
Condition Good
Notes These name tags have been placed on the “Keepers’ Tree” at the top of the Island, further up the track above “Macquarie Plains”. They mark the times of Keepers’ and caretakers’ stays. Each is made by the people shown.
Location Outdoors - Keepers Tree [More work Rqd.](#)



- 384 **Maker** Kentish, Judith 24. Signs: Keepers Tree
Object Sign: Judith Kentish Artist Aug. - Sept. 2010 **2010**
Medium
Size cms
Condition Good
Notes These name tags have been placed on the “Keepers’ Tree” at the top of the Island, further up the track above “Macquarie Plains”. They mark the times of Keepers’ and caretakers’ stays. Each is made by the people shown.
Location Outdoors - Keepers Tree [More work Rqd.](#)



- 385 **Maker** Searle, Craig & Debbie 24. Signs: Keepers Tree
Object Sign: Craig & Debbie Searle June - Sept. 2010 **2010**
Medium
Size cms
Condition
Notes These name tags have been placed on the “Keepers’ Tree” at the top of the Island, further up the track above “Macquarie Plains”. They mark the times of Keepers’ and caretakers’ stays. Each is made by the people shown.
Location Outdoors - Keepers Tree [More work Rqd.](#)



- 386 **Maker** Miller, Gary 24. Signs: Keepers Tree
Object Sign: Robyn Mundy, Gary Miller Oct. 10 - Feb. 11 **2011**
Medium
Size cms
Condition Good
Notes These name tags have been placed on the “Keepers’ Tree” at the top of the Island, further up the track above “Macquarie Plains”. They mark the times of Keepers’ and caretakers’ stays. Each is made by the people shown.
Location Outdoors - Keepers Tree [More work Rqd.](#)



- 387 **Maker** Raddatz, M. Barry, Nicky 24. Signs: Keepers Tree
Object Sign: Nicky Barry; Mark Raddatz 20th May - 3rd October 2011, 2011
Medium
Size cms
Condition Good
Notes These name tags have been placed on the "Keepers' Tree" at the top of the Island, further up the track above "Macquarie Plains". They mark the times of Keepers' and caretakers' stays. Each is made by the people shown.
Location Outdoors - Keepers Tree [More work Rqd.](#)



- 388 **Maker** Kanitz, R & Simpson, Meryl 24. Signs: Keepers Tree
Object Sign: Meryl Simpson and Roger Kanitz, Oct. 2011 - Feb. 2012 2012
Medium
Size cms
Condition Good
Notes These name tags have been placed on the "Keepers' Tree" at the top of the Island, further up the track above "Macquarie Plains". They mark the times of Keepers' and caretakers' stays. Each is made by the people shown.
Location Outdoors - Keepers Tree [More work Rqd.](#)



- 389 **Maker** Gittins A & Broome Anna 24. Signs: Keepers Tree
Object Sign: Anna Broome, Adam Gittins 7 Aug. 12 - 18 Feb. 13 2013
Medium
Size cms
Condition Good
Notes These name tags have been placed on the "Keepers' Tree" at the top of the Island, further up the track above "Macquarie Plains". They mark the times of Keepers' and caretakers' stays. Each is made by the people shown.
Location Outdoors - Keepers Tree [More work Rqd.](#)



- 257 **Maker** 25. Records
Object 4 loose leaf sets of records
Medium Paper and plastic folders
Size cms A4
Condition Fair
Notes These could be checked to see if scanning is worthwhile
Location Museum Room Q 1 Cupboard 3 [More work Rqd.](#)



258 **Maker**
Object Record books
Medium Paper and binder folders
Size cms A4
Condition Fair
Notes These could be checked to see if scanning is worthwhile

25. Records



Location Museum Room Q 1 Cupboard 3 [More work Rqd.](#) YES more info

411 **Maker**
Object Weather Log: Jan 82 - August 85 (incomplete)
Medium Book
Size cms 30 x 21 x 2 approx
Condition Worn
Notes It would be a good idea (but time consuming job) to scan these for digital storage.

25. Records



Location Weather shed [More work Rqd.](#) Scan more info

412 **Maker**
Object Weather Log: Sept. 88 - 31.7.97
Medium Book
Size cms 30 x 21 x 2 approx
Condition Worn
Notes It would be a good idea (but time consuming job) to scan these for digital storage.

25. Records



Location Weather shed [More work Rqd.](#) Scan more info

413 **Maker**
Object Weather Log: Aug. 1970 - Dec. 31 1977
Medium Book
Size cms 30 x 21 x 2 approx
Condition Worn
Notes It would be a good idea (but time consuming job) to scan these for digital storage.

25. Records



Location Weather shed [More work Rqd.](#) Scan more info

- 414 **Maker** 25. Records
Object Weather Log: Aug. 1997 - September 2006
Medium Book
Size cms 30 x 21 x 2 approx
Condition Worn
Notes It would be a good idea (but time consuming job) to scan these for digital storage.
- Location** Weather shed [More work Rqd.](#)



- 157 **Maker** 26. Workshop objects
Object Tyre Pump
Medium Wood & metal
Size cms 50 cms full length x 3.7 diam of pump 23.7 handle x 4.5
Condition
Notes Wooden handle does not look original - an example of repair carried out on the Island.
- Location** Museum Room Q 1 [More work Rqd.](#)



- 158 **Maker** 26. Workshop objects
Object Tyre Pump
Medium Wood & metal
Size cms 50.5 cms full length x 3.5 diam of pump 18.0 handle x 2.5
Condition Base damaged
Notes Original Wooden handle.
- Location** Museum Room Q 1 [More work Rqd.](#)



- 177 **Maker** Protector Safety Pty Ltd 26. Workshop objects
Object Lens cleaning station with tin of lens cleaner anti fog solution
Medium Metal
Size cms 25 x 23.58 X 5.8
Condition Fair - shows rust
Notes There is a set of these installed in the workshop/garage. Perhaps this set came from the generator room or battery room in Q1.
- Location** Museum Room Q 1 Cupboard 2 [More work Rqd.](#)



- 390 **Maker** 26. Workshop objects
Object Group of Block and tackle hooks
Medium Metal
Size cms Various (10)
Condition Fair
Notes The objects in the workshop need to be fully catalogued.
 This is a great group and it could be found that some are of historical interest.
- Location** Workshop [More work Rqd.](#) YES



- 391 **Maker** 26. Workshop objects
Object Container of old nails
Medium Iron nails
Size cms 14 cms. approx. length
Condition Rusted
Notes The objects in the workshop need to be fully catalogued.
 These nails were either rescued from projects around the island (possibly haulage way) or they may have always been spare nails
- Location** Workshop [More work Rqd.](#) YES



- 392 **Maker** 26. Workshop objects
Object Sea Anchor?
Medium Canvas and rope
Size cms
Condition Fair
Notes The objects in the workshop need to be fully catalogued.
 Could this have been found on shore?
- Location** Workshop [More work Rqd.](#) YES



- 393 **Maker** 26. Workshop objects
Object Lens cleaning station
Medium Metal
Size cms 25 x 23.58 X 5.8
Condition Fair
Notes The objects in the workshop need to be fully catalogued.
 This is the same as the one in the Museum - probably they were in various positions on the Island.
- Location** Workshop [More work Rqd.](#) YES



- 394 **Maker** 26. Workshop objects
Object Wall showing various objects of various dates
Medium
Size cms
Condition Mostly still in use
Notes The objects in the workshop need to be fully catalogued.
 There are many objects here that are new, but there are older objects still in use. The Culture to repair rather than replace being evident.
- Location** Workshop [More work Rqd.](#) YES more info



- 395 **Maker** 26. Workshop objects
Object Anvil
Medium Cast iron
Size cms 31 x 84 x 13.7
Condition Good
Notes The objects in the workshop need to be fully catalogued.
- Location** Workshop [More work Rqd.](#) YES more info



- 396 **Maker** 26. Workshop objects
Object Garden Tools
Medium Various
Size cms Various
Condition Varied
Notes The objects in the workshop need to be fully catalogued.
 Many of the tools are still used. They need to be catalogued and researched individually. One must assume that some could be old.
- Location** Workshop [More work Rqd.](#) YES more info



- 420 **Maker** AMSA 27. AMSA
Object Railing from "new" Beacon
Medium Aluminium
Size cms 120 h. approx. (not measured)
Condition Fair
Notes We think this was removed from the new light beacon.
- Location** Whim shed [More work Rqd.](#) more info

