

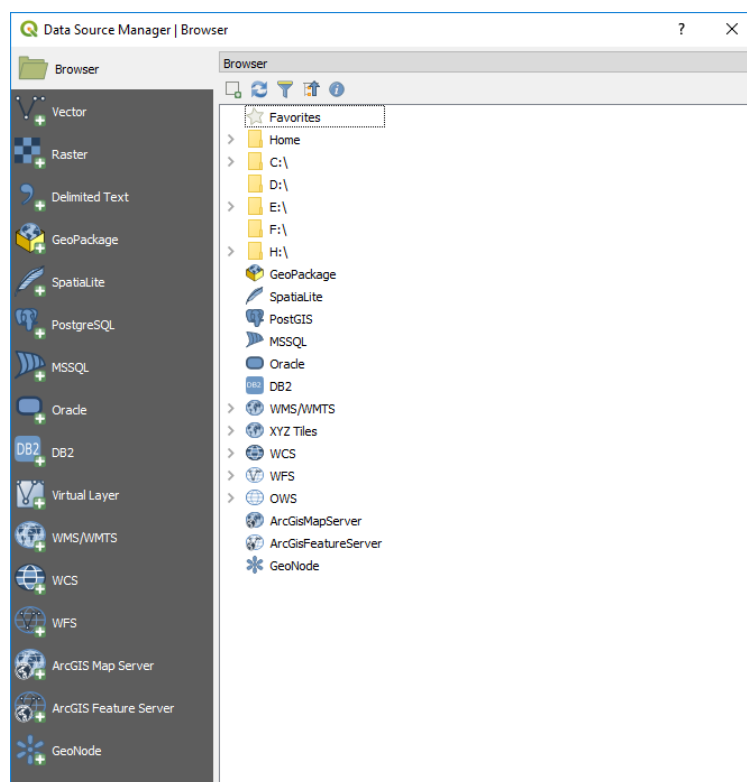
## How to add services in QGIS Version 3.2.0

### Adding WMTS services to QGIS

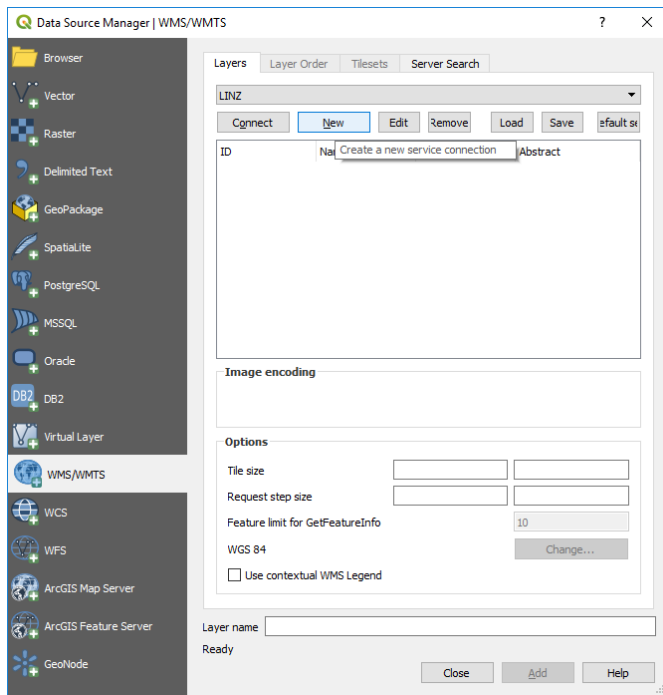
**For basemap services WMTS is the recommended format where available**

To add a WMTS layer to QGIS,

- **CTRL-L** to open the data source manager and click on the **Add WMS/WMTS Layer** as shown in the image below
- Alternatively go to the **Layer** menu, select **Add Layer**, then **Add WMS/WMTS Layer**



- For a new connection click on the **New** button

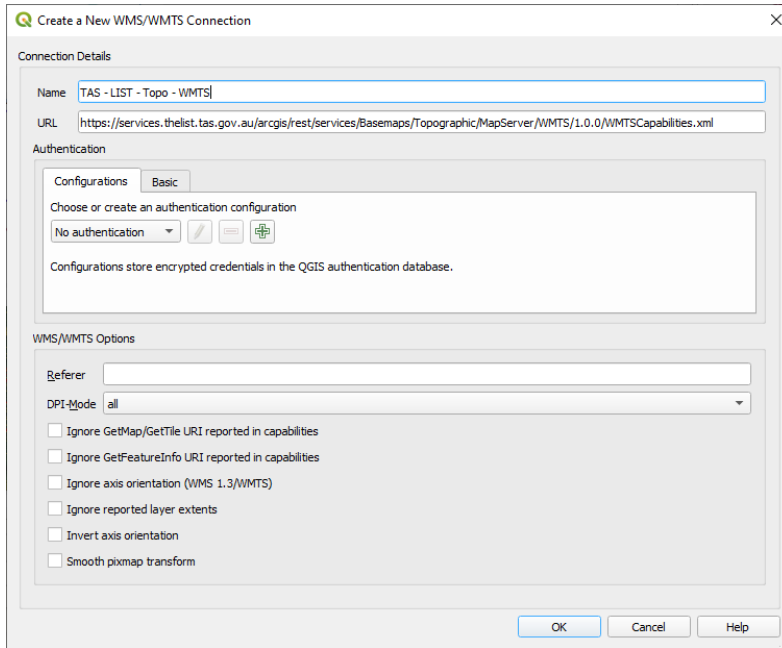


- Type in a meaningful name in the **Name** text box then type in a URL from the LIST's [ArcGIS REST web services](#) that has WMTS enabled (look for WMTS in the top left

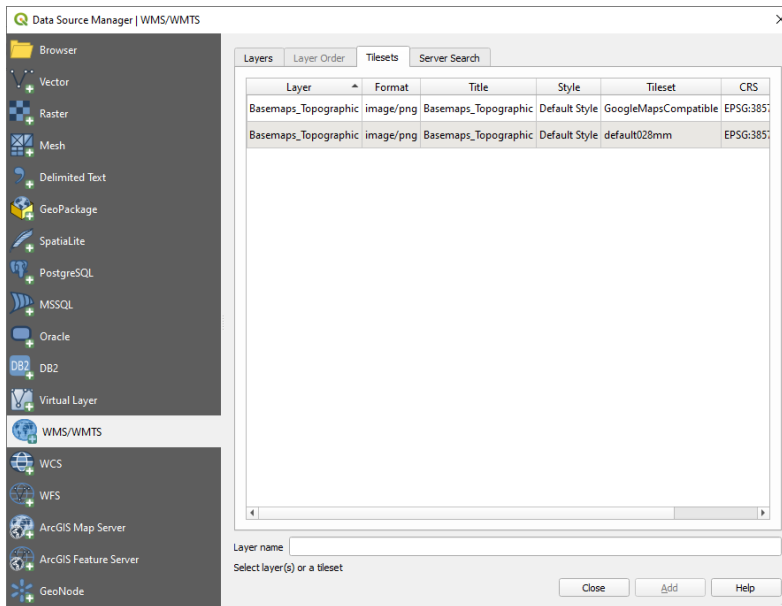


For example,

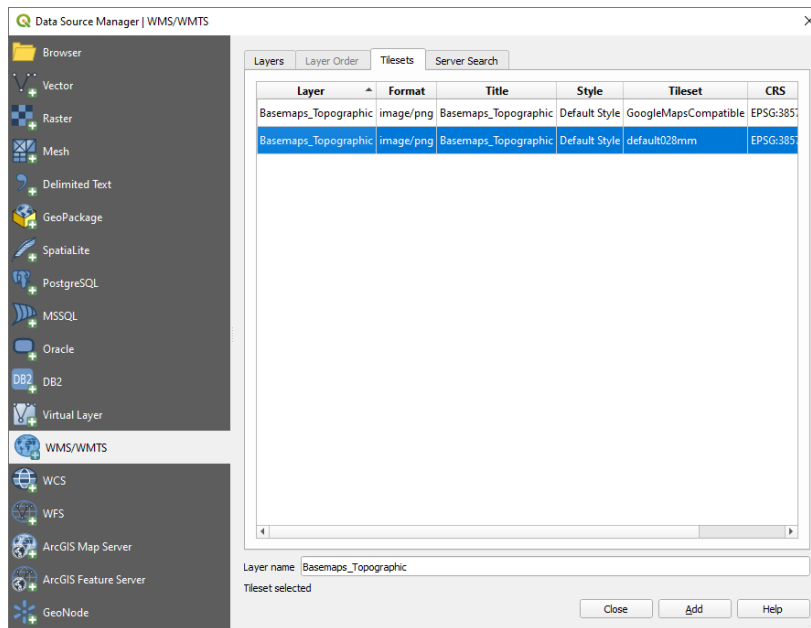
<https://services.thelist.tas.gov.au/arcgis/rest/services/Basemaps/Topographic/MapServer/WMTS/1.0.0/WMTSCapabilities.xml> and then click OK



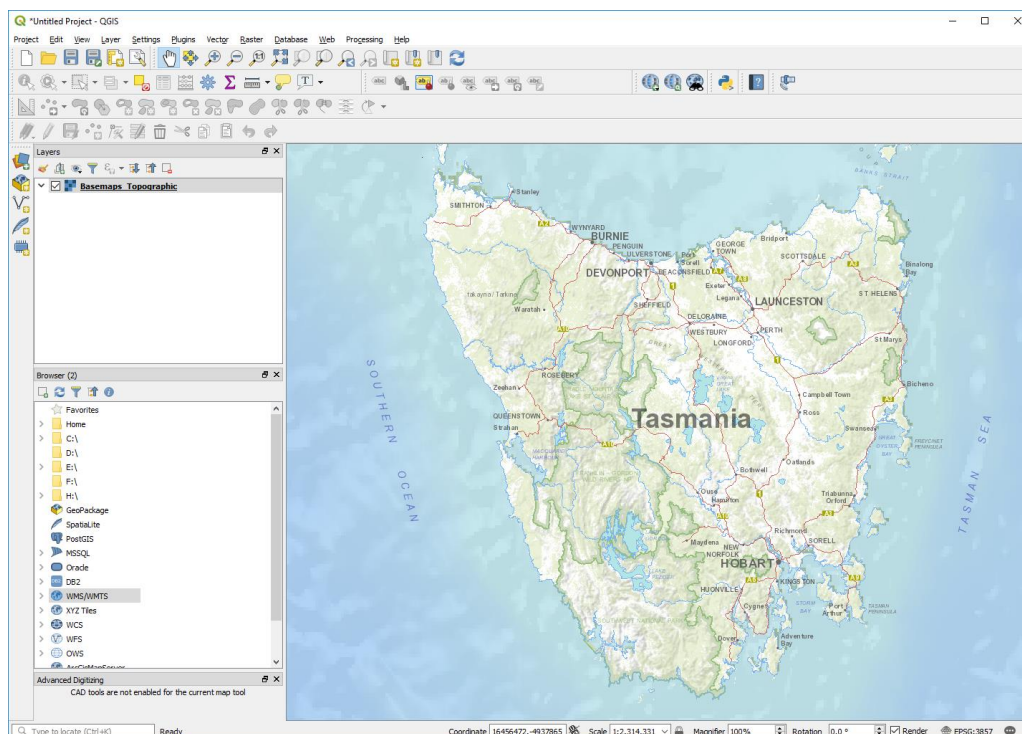
- Then click on the **Connect** button to view the available tile sets



- Highlight a tile set that you wish to use and click **Add**



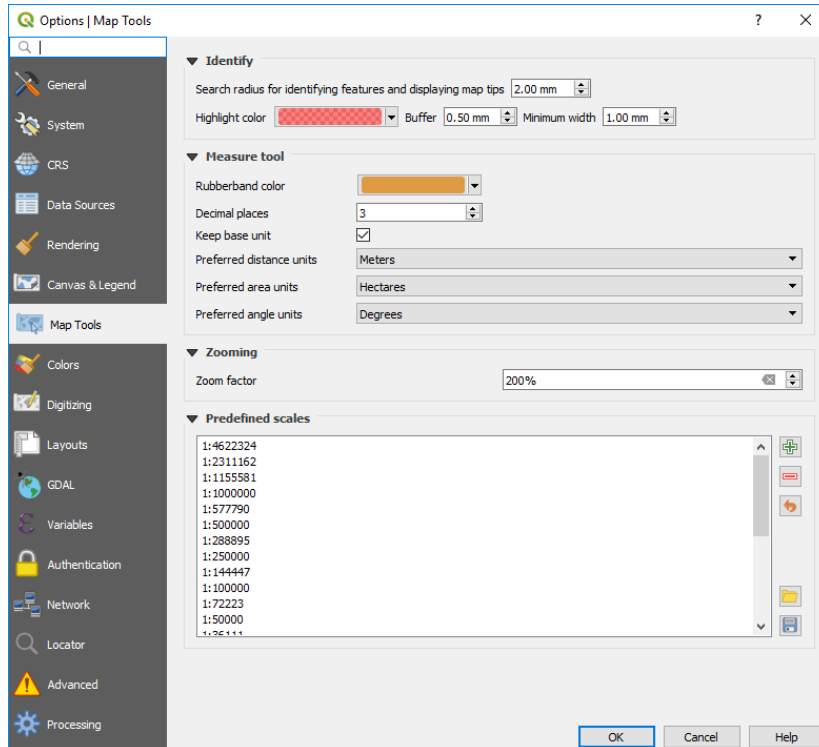
- The results are then loaded into QGIS. Please be aware that the initial extent may not be initially zoomed in to Tasmania. It's also a good idea to right click on the layer and Zoom to native resolution for the clearest images.



For the best outputs you should set the scale of the map to one of the following

Level	Scale
7	1:4,622,324
8	1:2,311,162
9	1:1,155,581
10	1:577,790
11	1:288,895
12	1:144,447
13	1:72,223
14	1:36,111
15	1:18,055
16	1:9,027
17	1:4,513
18	1:2,256

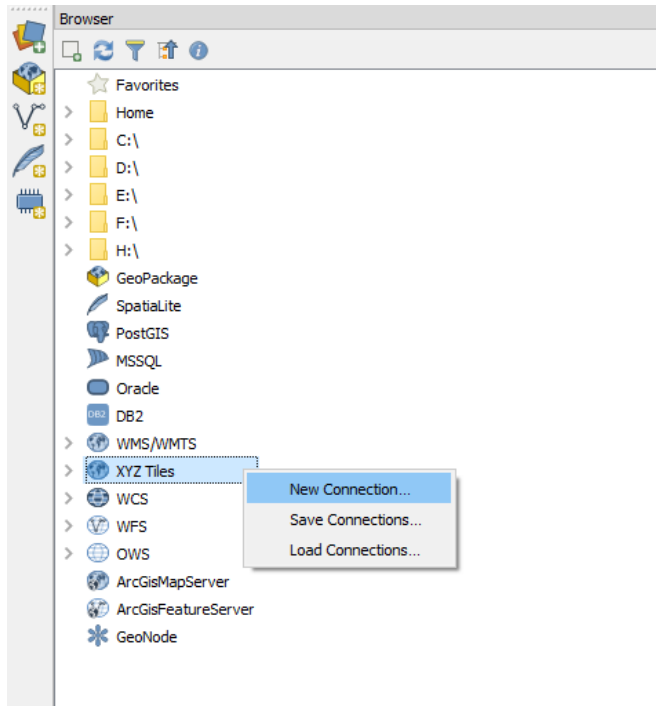
If you are regularly using LIST maps then you can add these to your predefined scales using **Settings, Options, Map Tools**



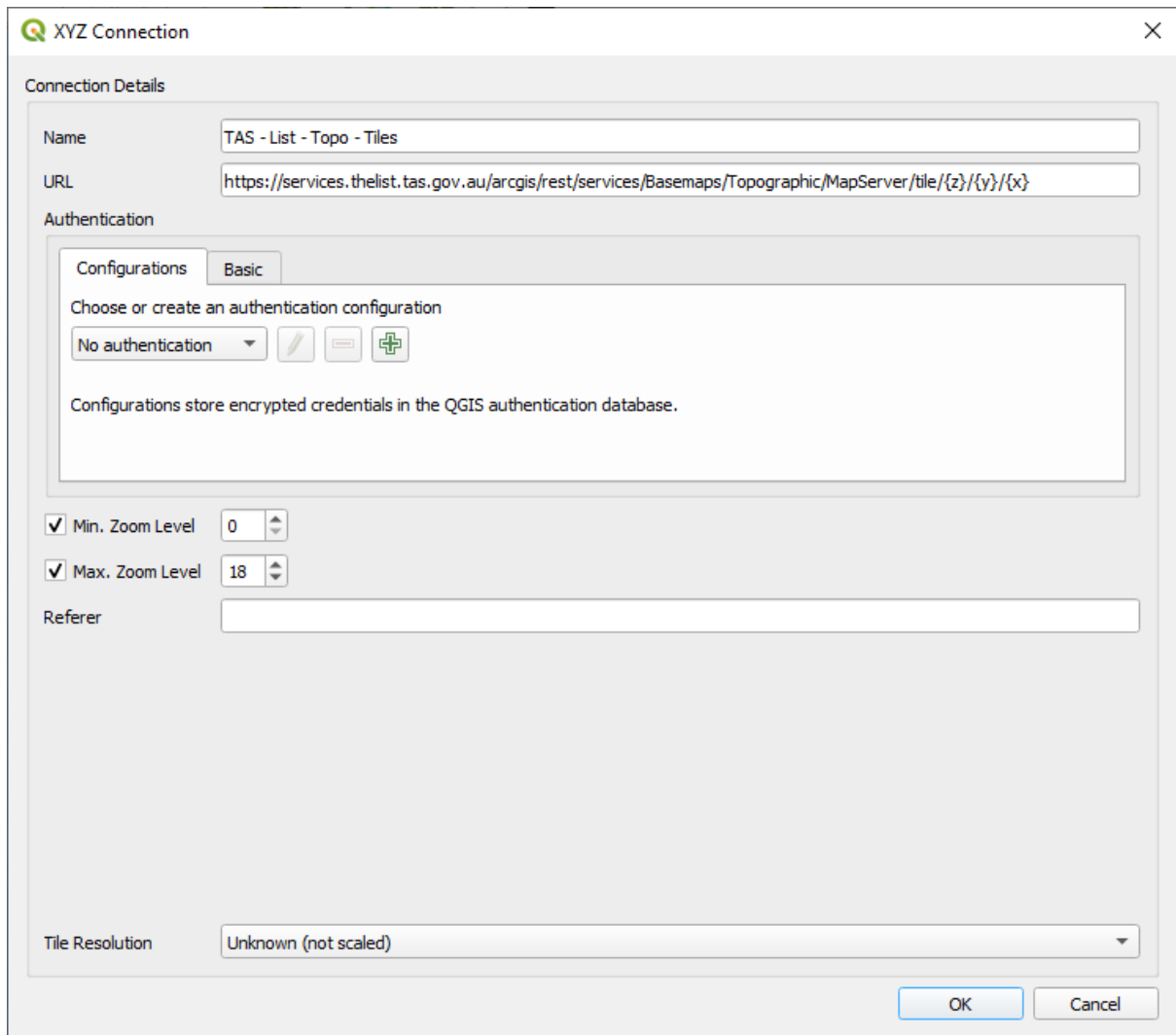
## Adding a Tile Service to QGIS

To add a tile service to QGIS

- In the browser, right click on XYZ Tiles and click New Connection



- Add a suitable name, URL and zoom levels and press OK



The following tile services can be added

<http://services.thelist.tas.gov.au/arcgis/rest/services/Basemaps/Topographic/MapServer/tile/{z}/{y}/{x}>

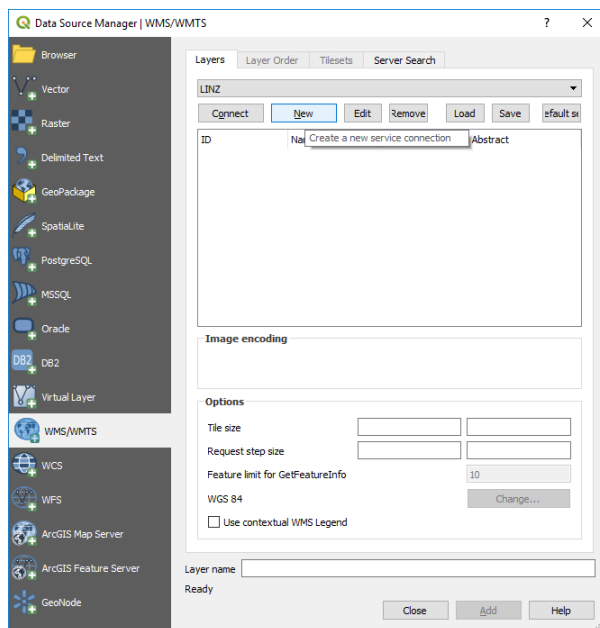
<http://services.thelist.tas.gov.au/arcgis/rest/services/Basemaps/TasmapRaster/MapServer/tile/{z}/{y}/{x}>

<http://services.thelist.tas.gov.au/arcgis/rest/services/Basemaps/Orthophoto/MapServer/tile/{z}/{y}/{x}>

## Adding WMS services to QGIS

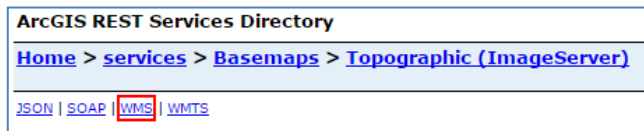
To add a WMS layer to QGIS,

- **CTRL-L** to open the data source manager and click on the **Add WMS/WMTS Layer** as shown in the image below
- Alternatively go to the **Layer** menu, select **Add Layer**, then **Add WMS/WMTS Layer**
- For a new connection click on the **New** button

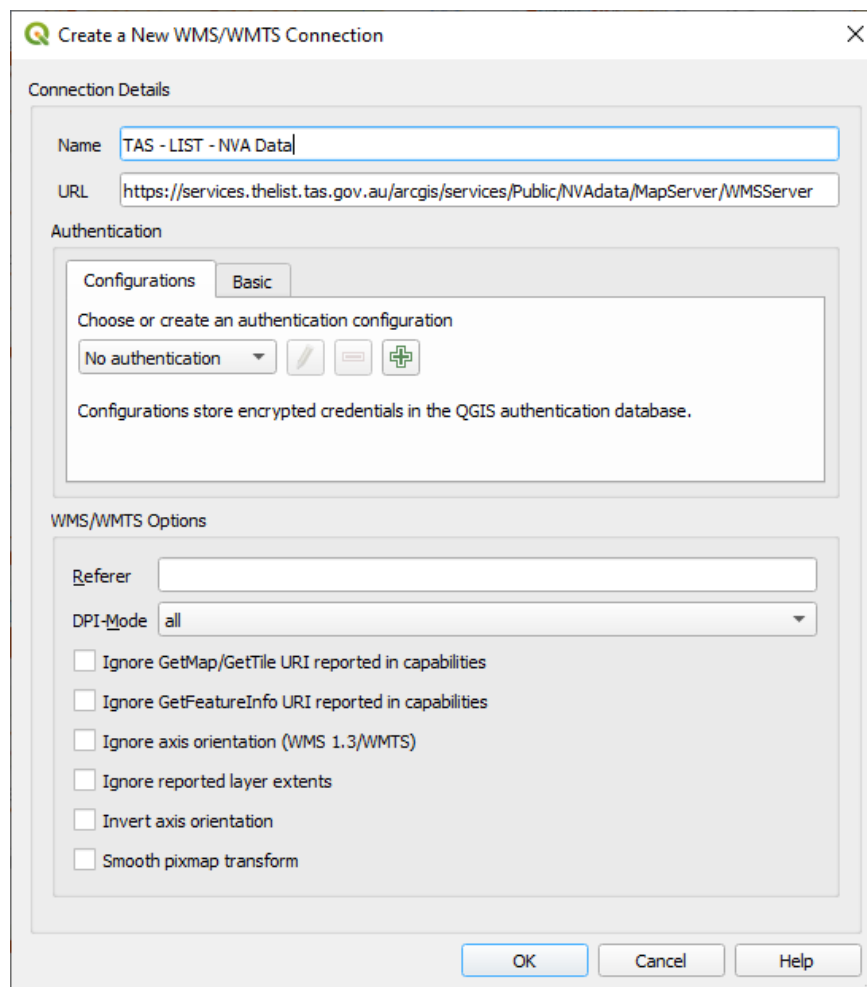




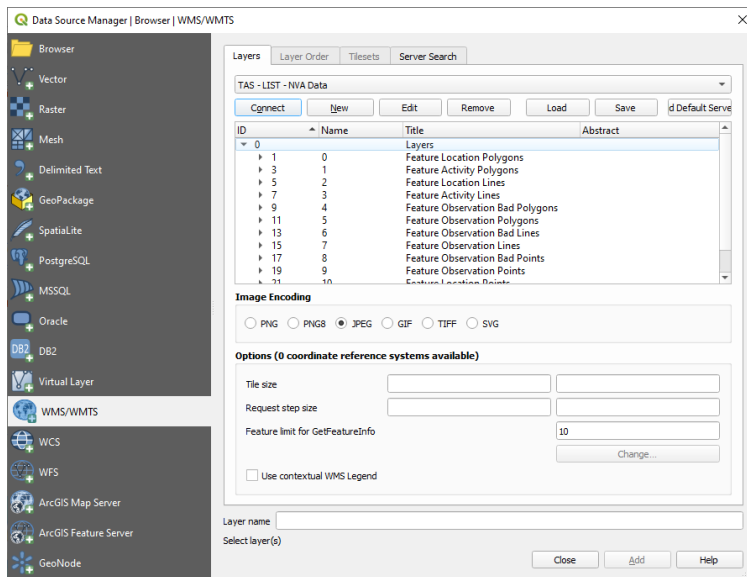
- Type a meaningful name in the **Name** text box then type in the URL for the desired WMS layers:  
<https://services.thelist.tas.gov.au/arcgis/services/Public/TopographyAndRelief/MapServer/WMServer?request=GetCapabilities&service=WMS> and click **OK**.
- Alternatively, check the LIST's [ArcGIS REST web services](#) to see if WMS is enabled on a service (look for WMS in the top left corner)



For example, the following URL will also allow you to add Natural Values Atlas data:  
<https://services.thelist.tas.gov.au/arcgis/services/Public/NVAdata/MapServer/WMServer?request=GetCapabilities&service=WMS>



- **CTRL-L** to open the data source manager and select **WMS/WMTS**
- Ensure that you have the correct connection selected from the drop down list then click on the **Connect** button to view the available layers
- Highlight a layer, change the coordinate system if required, ensure that PNG is the Image encoding (if you want to overlay the features on other base maps) and click **Add** to add the layer to the map. This window will stay open if you want to add more layers or simply click the **Close** button to dismiss the window.



- Note – some layers do not appear until you zoom in
- Once you have set up the WMS connection you can also drag and drop layers onto the map from the browser panel

QGIS "Untitled Project - QGIS"

Project Edit View Layer Settings Plugins Vector raster Database Web Processing Help

Layers

- ✓ Ambulance Stations
  - Ambulance station
- ✓ Hospitals
  - Major Hospital
  - Rural Health Facility (Inpatient beds)
  - Facility - Rural Health Beds
- ✓ Basemaps\_Topographic

Browser (2)

- Orade
- DB2
- WMS/WMTS
  - LIST - Emergency Services Public
  - LIST Topographic and Relief
    - 100m Contours
    - 10m Contours
    - 20m Contours
    - 50m Contours
    - 5m Contours
    - All Transport
    - Ambulance Stations
    - Boat Ramps
    - Bridge ID 54
    - Building Points
    - Building Polygons (Part 1)

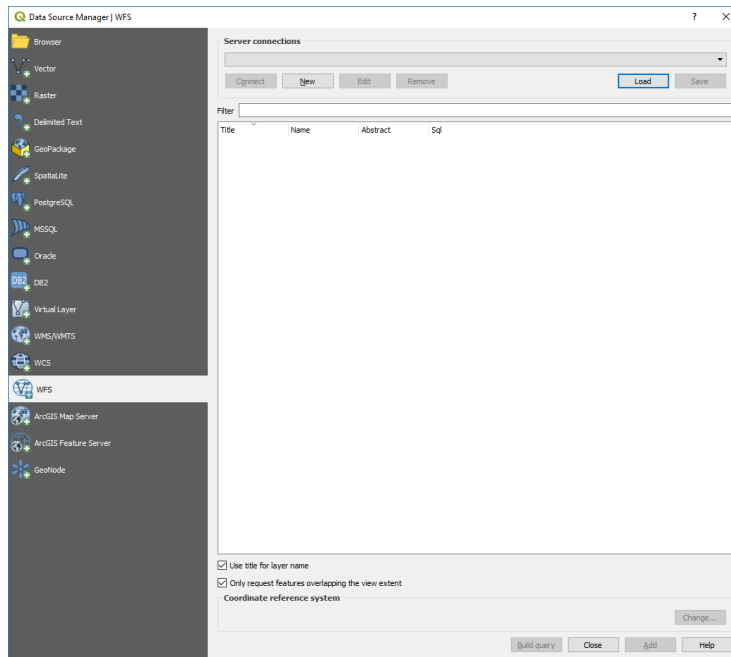
Advanced Digitizing  
CAD tools are not enabled for the current map tool

Coordinate: 16505998,-4928064 Scale: 1:2,311,162 Magnifier: 100% Rotation: 0.0° Render EPSG:3857

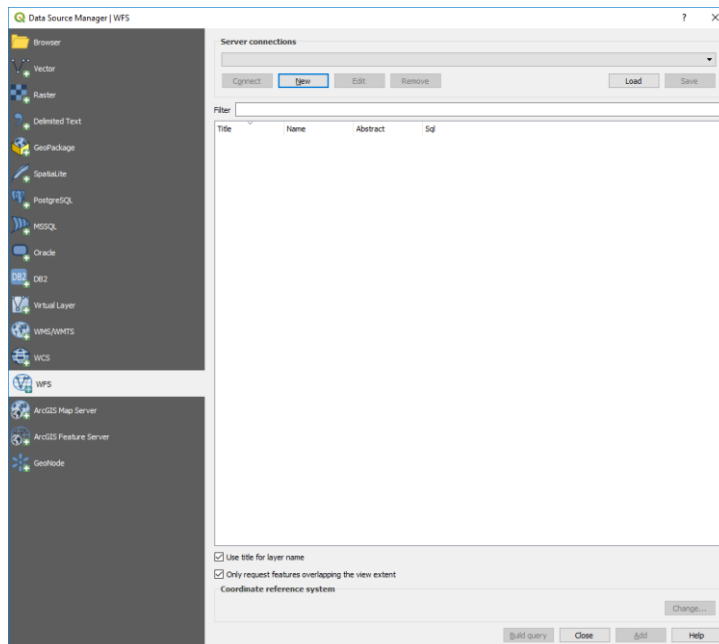
Type to locate (Ctrl+K) 1 legend entries removed.

## Adding WFS services to QGIS

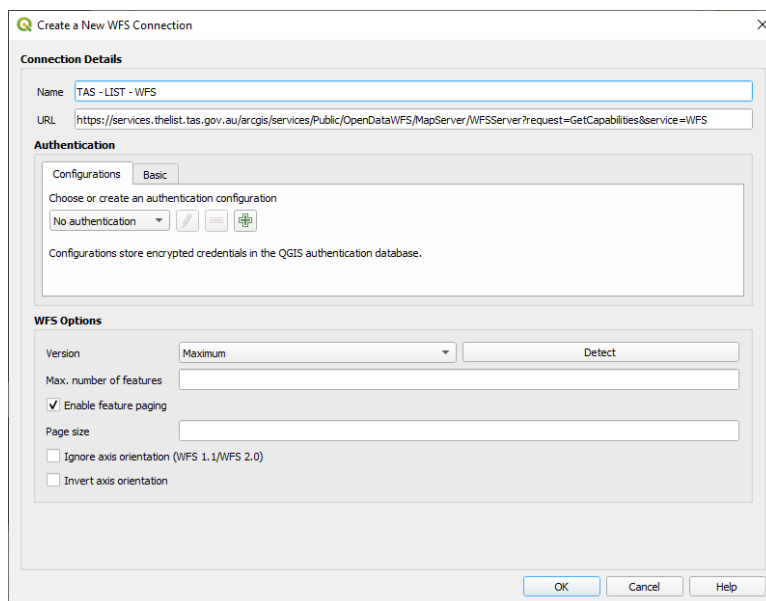
- **CTRL-L** to open the data source manager and click on the **Add WFS** as shown in the image below
- Alternatively go to the **Layer** menu, select **Add Layer**, then **Add WFS**



- For a new connection click on the **New** button



- Type a meaningful name in the **Name** text box then type in the following URL:  
<https://services.thelist.tas.gov.au/arcgis/services/Public/OpenDataWFS/MapServer/WFSServer?request=GetCapabilities&service=WFS> and click **OK**.



- Ensure that you have the correct connection selected from the drop down list then click on the **Connect** button to view the available layers, highlight a layer, double click on it to add a filter expression if required, enable **Use title for layer name** and click **Add** to add the layer to the map. This window will stay open if you want to add more layers or simply click the **Close** button to dismiss the window. Please note that there is a 2,000 maximum feature limit on each layer for performance requirements for the LIST WFS service

