



FRIENDS OF TASMAN ISLAND

NEWSLETTER

OCTOBER 2009

No 2



From the President

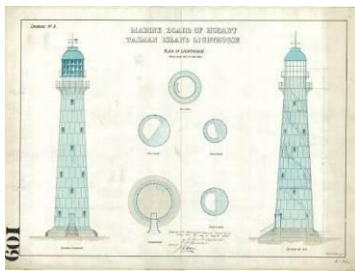
Hope you enjoy reading our second newsletter. There have been several working bees to Tasman Island, with hundreds of hours work accomplished, since the proceeds of our last calendar so our coffers are almost empty – please consider purchasing a few copies of the calendar or buying a beanie. Please pass on the details to friends and family.

The original water colour drawings of the designs for the Tasman Island light station were found by Lyndon O'Grady, AMSA during a recent office move - "probably the best preserved original watercolour plans I have seen". The originals will be transferred to Australian Archives in the new year.

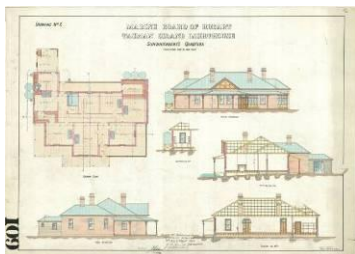
Are you interested in joining one of our memorable working bees? –Register your expression of interest by email, Carol.Jackson@dpac.tas.gov.au outlining your skills and experience.

Original Watercolour Plans

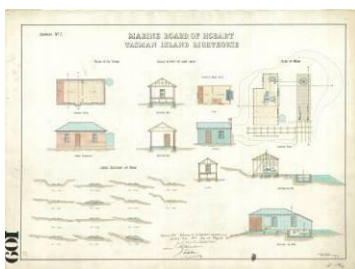
Files available for printing. To receive a copy of the file please email deewebb@live.com.au



The Tower
File size: 7 mb
Resolution: 300 dpi



Quarters 1 (Superintendent Quarters)
File size: 7mb
Resolution: 300 dpi



Whim & Oil Store Shed
File size: 7mb
Resolution: 300 dpi

Upcoming Events

Social Meeting

When Saturday 21 November

Where Taranna Hall, Taranna

Time 5:30 pm

Please bring a plate of nibbles/finger food to share, tea and coffee available.

What's On

Sojourn on Swan Island

Presented by: Erika Johnson

Erika, one of FOTI's renowned photographers and writers, will reminiscence about her 2 years on Swan Island as caretaker and manager of this island paradise, situated off the north east coast of Tasmania. Images capture her life on the island during her stay and the beauty of this isolated light station.

The Flora of Tasman Island

Presented by: Bob and Penny Tyson

In addition to implementing a weed eradication and management plan for Tasman Island, Bob and Penny have collected and recorded a large number of 'specimens' and accompanying images of the flora of the island – guaranteed to be an informative and interesting presentation.

Feral Cats

Presented by: Luke Gadd

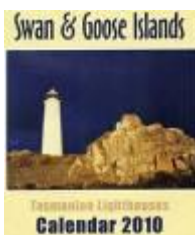
Luke, a Peninsula local and PWS Ranger who has worked with Friends of Tasman Island for several years will give us the low down on feral cat impacts and the preparatory work & research undertaken to date on Tasman Island.

In this Issue

- 1 Next Social Events
- 2 Files of Original Plans available for printing
- 3 2010 Calendar – Now on Sale
- 4 2011 Calendar – Low Head - Call for Photos
- 5 Upcoming Raffle – List of Prizes
- 6 Tasman Island Beanies for Sale

Fundraising

2010 Calendar – Swan and Goose Islands



NOW ON SALE

To order email:

taslighthousecal@netspace.net.au

Cost: \$22.50 plus p&h

Beanies for Sale



Cost: \$15 (GST incl) plus p&h

Place order by emailing

deewebb@live.com.au

Details of payment and delivery will be sent on the placement of order.

2011 Calendar – Low Head Lighthouse

Have you got any great photos of Low Head Lighthouse or the leading lights? We want them for our next fundraising calendar.



Closing date for the photos: 31 October 2009

Please send your photos to:

By email:
shirley_baker@bigpond.com

By Post: Shirley Baker
74 Moss Beds Rd
Lachlan TAS
7140



Upcoming Meeting Schedule

Christmas Function

No more news, but it will be early December at the Lark Distillery, will send members with more details by email.

Upcoming Fundraising

Raffle

Upcoming raffle, tickets will be on sale soon. Details of prizes listed below.

1st Prize Helicopter day trip for 2 to Tasman Island (Value \$1500)

Leaving from Cambridge Airport experience the extraordinary coastline of the Tasman National Park and spend time on one of the most isolated and spectacular lighthouse stations in Australia. Includes a guided tour of the island and lunch. *Flight dates subject to weather conditions and helicopter availability

2nd Prize 24"x20" (image size) framed medium format photo of Couta Rocks on Tasmania's West Coast (Value \$450)

Couta Rocks has a primordial ambience generated by the fact that it takes the full brunt of savage seas that pound in all the way from Argentina. This, coupled with the extraordinary geology of the area, make the area an outstanding part of the Tarkine.

3rd Prize Family ticket (2 adults, 2 children) Sea Cruise around Tasman Island (Value \$330)

A spectacular three-hour quality eco-cruise from Port Arthur along the Tasman Peninsula coastline, including Tasman Island and Cape Pillar, the highest sea cliffs in the Southern Hemisphere and deep sea caves such as Tasman Arch.

Helicopter Flights to Tasman Island



The annual trip to Tasman Island organised by the Rotary Club of Tasman Peninsula has become an eagerly awaited event among lighthouse enthusiasts and people looking to go "somewhere different". The next trip is scheduled for Saturday 10 April 2010. Volunteers from the Friends of Tasman

Island group will spend the preceding week on the island in preparation for the influx of visitors.

Inquiries: email: johnhay@bigpond.net.au or
Phone: 0407 526 895

Another Chance for Tasman Island Lantern room

By Erika Johnson

The Australian Maritime Safety Authority (AMSA) recently granted the Friends of Tasman Island (FoTI) the loan of the original lantern room from the Tasman Island Lighthouse which was removed when the light was automated in 1976.

The lighthouse, together with its lantern room, was manufactured in kit form by Chance Brothers of Birmingham, England. On arrival on Tasman Island, the individually numbered cast-iron plates were bolted together and the 1st Order dioptric Fresnel lens, also a product of Chance Brothers, was installed. The light first gave its warning flash on 4 April 1906.

In preparation for automation in 1976 a smaller lantern room and light were installed. The original lantern room was dismantled before being removed from the island and stored in various locations over the years. Rather than see the lantern room come to an ignominious end, FoTI has rescued it from its latest location – the Hobart Cat Centre.

In lighthouse parlance the *lantern*, or *lantern room*, is a weatherproof enclosure containing the optical apparatus. This includes the *lantern roof*, *lantern glazing* and *lantern base*. Attached to the base are *internal and external catwalks* or *galleries* each surrounded by a *balustrade* of metal *stanchions* and *rails*. The lantern base, in turn, supports the *dome* or *lantern roof* made of copper sheeting over a framework of iron *ribs*. The drum-type *lantern roof ventilator* is topped by a *windvane*.



Despite the fact that it was AFL grand final day eleven willing volunteers assembled at the Cat Centre on Saturday 26 September. Looking rather like a giant Meccano set, the pile of heavy lantern room components were manhandled out of the enclosure. With equipment kindly lent by the Cascade Brewery the move to a secure location in central Hobart went smoothly.



Here it is planned to reconstruct the lantern room. There will now also be more room for errant moggies at the Cat Centre!

The following weekend a start was made on assembling the pieces. Unfortunately there was a dearth of volunteers this time. However, with the aid of Cascade's small hydraulic forklift, Chris Creese and his brother Nick set up enough *dome ribs* on the *curved lower sill* to support the *upper dome ring*. Then, single handedly, Chris started bolting the parts together which form the dome, encouraged by Erika who was standing by with the camera.



By the end of the day the dome looked almost complete from one angle. However, an inventory revealed that some of the original Chance Brothers components are missing or broken so the hunt is on to locate original parts or replacements.

The original Fresnel lens is on permanent display in the Australian Maritime Museum in Sydney. Now, thanks to AMSA's Lyndon O'Grady with help in funding the relocation, FoTI now hopes to be able to find a permanent place to display the lantern room itself.

If you know of any pieces of the Tasman Island lighthouse - or any other lighthouse - please let FoTI know – phone President, Carol Jackson 03 6265 9785 or Carol.Jackson@dpac.tas.gov.au.