



FRIENDS OF TASMAN ISLAND



NEWSLETTER

JULY 2010

No 4

From the President

A few words from your President

Plenty has been happening on and off Tasman Island since February.

Another 2 very successful working bees – Core members, Chris Creese and Erika Shankley, need special mention for their herculean contributions as Works Supervisor and Working Bee Coordinator for both working bees. In our next newsletter you will hear how Chris & Erika have also been busy off the island.

Helen Gee's poem Ten Days on the Island perfectly captures the spirit and accomplishments of the February/March 2010 working bee participants who were lulled each evening by folk songs sung by Bob Graham on ukulele & Helen on mouth organ.

Friends of Tasman Island has firmly cemented a positive working relationship with the Tasman Peninsula Branch of Rotary after another outstanding Open Day on Tasman Island in early April. Special thanks to Lyndon O'Grady from the Australian Maritime Safety Authority for donating his time and opening the tower again for both the lucky FoTI volunteers who spent the preceding 10 days working on the island and the 50 odd paying visitors – nearly every single person commented on how fantastic and well maintained the light station is looking.

- Many visitors thought there must be resident caretakers. Indeed a summer caretaker program is still a priority for FoTI and recent comments by PWS General Manager, Peter Mooney, gives heart to our proposal progressing.

Are you interested in helping with the restoration of the Tasman Island Lantern Room and the Cape Sorell Lens?

– We have hopefully found a few more useful lighthouse pieces stored in one of the Inveresk warehouses of the Queen Victoria Museum and Art Gallery after a recent visit to Launceston. Good news: AMSA has offered financial and practical assistance to FoTI to catalogue & crate the Cape Sorell lens currently stored in less than ideal conditions at Mt Canopus. So a few working bees will be needed – if you are interested please contact me. The Prism will be stored with the lantern room until the rebuild, hopefully somewhere in Constitution Dock. A special feature on the Cape Sorell lens in the next newsletter.

My new contact details:
FriendsofTasmanIsland@gmail.com
Ph 6265 9785 (home)
Mobile 0437 192 010

Hope you enjoy reading this issue!

Winners of the Raffle

FoTI has run their first raffle, which was a great success. Thank you to those who sold raffle books. We will be a running another raffle at the Wooden Boat Festival next year in conjunction with Friends of Deal Island and Maatsuyker Island.

1st Prize winner	Eve & Ray Foreman
2nd Prize winner	Iris Todd
3rd Prize winner	Damian Davidson
4th Prize winner	Trauti Reynolds

Inside this Issue

1	Presidents Report
2	Raffle Winners
3	Poem by Helen Gee
4	Drawings of Tasman Island by Helen Gee
5	Farewell to Feral Cats
6	April Working Bee Report
7	The Lighthouse Cook Book
8	

WORKING BEES

A Poem by Helen Gee - Ten Days on the Island (FoTI style)

Away south to Tasman for ten full days
Fair weather or foul the island's a craze
for *Friends* with a handle on Tasman's delights
So time fairly flies till the homeward flights

Day one saw a tank being rolled away
(there's to be a new one dropped in some day)
The old tank was lined for deposit of weeds
To ensure they all die, with no viable seeds

In verandah and laundry floors were scraped clean
Soon they shone bright with a new grey sheen
And windows too, and the old back door
Came in for some paint just like the floor

The first few days we were fine weather blest
Young Chris flung commands with hearty zest:
Fill the tank with weeds and mulch;
Toss that old lino in the tip at the gulch;

Cut yarrow seed heads as you pass;
Oh, and carry, too, a load of grass;
Fish oil tractor, tank stays and bolts;
House vents, verandah ties and rusty faults...

Collect good bricks, and see that they're clean
Move that old timber ...watch your spleen!
Then the day for indoor jobs is here –
'cause mist, then wind, then drops appear...

A wild dog day, I hear Chris say
The cliffs and crags are slaty grey
There's a window sash that needs repair
(But Scott's outside, he loves it there)

Erika's cooking more scrumptious food
And baking bread, in a kitchen mood
Anne is sweeping through the hall
And other bods are lazing; on call...

Now brush cutting's resumed at the old fowl yard
Exposing timber, p'raps a heritage shard
Mike's in his element cutting and raking
and carting the fern till his back be breaking

The day the tsunami hit the isle
we dragged out netting, quite a pile,
collected seeds as the strong wind blew
then resorted to window painting anew

Where the relief keepers' chimney long hit the turf
The Rob'n Bob Express are proving their worth
The pile of cleaned bricks at Q1&3 grew
In readiness for a house restoration crew

Next Rob'n Bob explored the ruin
And no-one knew just what they were doin'
When out they hauled a heap of nails
and a mantel piece....ye holy grails!

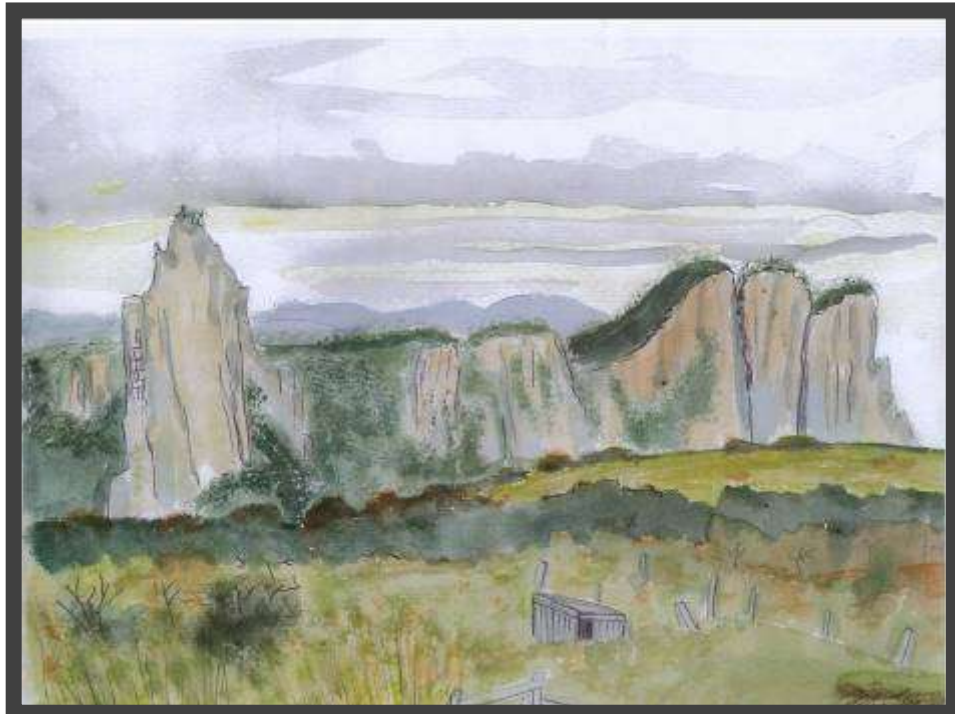
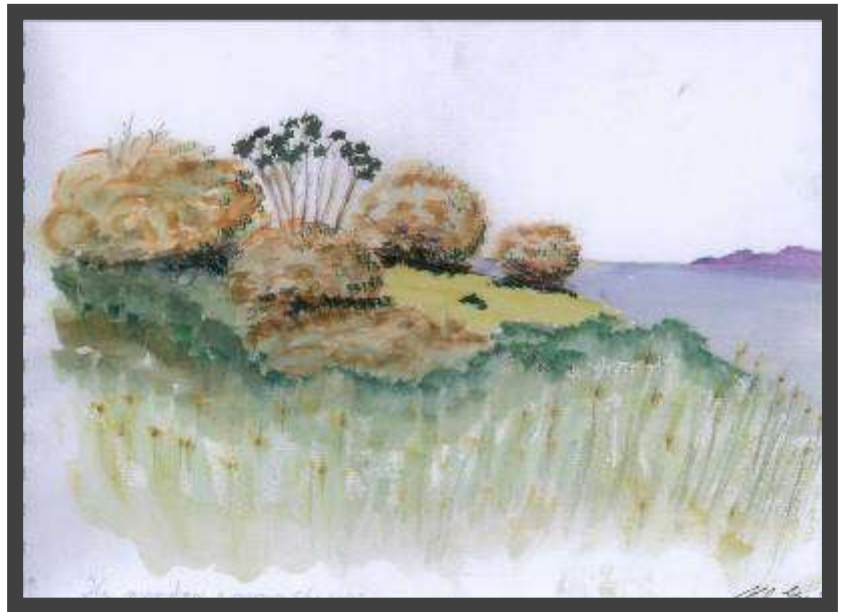
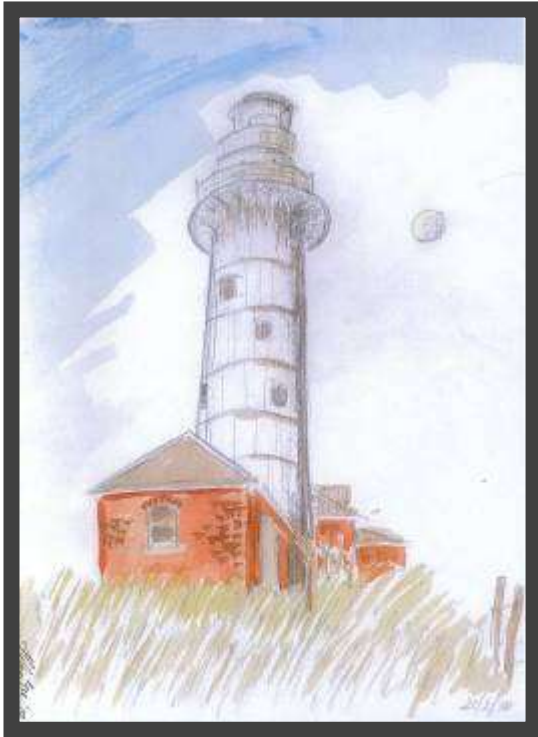
A turn buckle too beneath the rubble
and plumbing fittings well worth the trouble
There seems no end to the heritage find
On fish oil tonight the Tasman's cats will dine!

There were recitations, songs and dance
And Scott assumed his Tasman trance
His hors d'oeuvres at Honkers did truly astound!
As ideas for the future were bounced around

One volunteer is worth ten pressed men
(It's a naval expression used again and again)
So here's to the Friends and their mission bold
And time well spent in Tasman's fold!

Helen Gee 1 March 2010





Water Colour paintings by Helen Gee

Before and After on Tasman Island



Early 1900's



April 2010 Working Bee

Another successful working bee, the second for the year, spanned the Easter break and the 104th birthday of the Tasman Island Light. Thank you to everyone for your continued work towards the restoration of Tasman Island, its heritage and natural values.

Our work was made much easier, thanks to the assistance of our partners, PWS, particularly Stuart Dudgeon, Luke Gadd and the team from Taranna who supervised operations at Safety Cove and to Rotary for assistance with flights off the island. Thank you, also, to Carol Jackson for help with shopping, packing and delivering supplies to the 5 Mile Beach depot; Mike Emery for his help with the tank and Mark for transport back to Cambridge.

Arrival

Tanya Fra, from Parks Seven Mile beach office, joined us for an impromptu trip to Tasman while the rest of the team and our luggage were flown over from Safety Cove. All went smoothly - thanks to Clint Miles, the pilot from Helicopter Resources. In addition to personnel, food and luggage, a sling containing a 2000 gallon corrugated iron water tank was brought over to the island and dropped within a few of metres of its intended position.

Accommodation

Sleeping accommodation was split between Q2 and Q3, while Quarters 3 remained the main hub of activity.

Catering

Once again Erika provided a varied menu of international recipes. It was essentially a team effort, however, with everyone helping with meal preparation and washing up afterwards

Hooters Tasman Island Restaurant received a ***** seal of approval from all the team, the only complaints being the extra bulge round the midriff!

Alice and Sue Bennett

Photographer, Alice Bennett's main aim was to take photographs of the lightstation buildings for inclusion in a new book. However, she also took photos of various aspects of the working bee which she is happy for FoTI use to further publicise our work and also mucked in with the team doing various jobs during the 3 days she was on the island.

By prior arrangement (with both PWS and FoTI) she swapped with her mother, Sue Bennett, who arrived in a privately chartered Rotalift helicopter, together with Alice's partner, Tom Gray, writer, Georgia Warner and her partner, Nick Gatenby. During their short time on the island we enjoyed a shared lunch followed by a walk to points of interest.

Weather

This went from one extreme to another! The calm, sunny autumn days were punctuated by a couple of gales with gusts up to 78 kph and 14.8 mm of horizontal rain – just to remind us what the weather can be like at Tasman! In contrast, we witnessed an Aurora Australis, the night sky lit up by vertical shafts of white light.

Walks

As usual we did a familiarization walk around the precinct. Other walks took in the Monkeys, and the Lost World.

Water Tanks

A program of replacement of water tanks commenced in 2008 when the tank on the oil store was replaced. This year, using funds from the Tasmanian Community Fund, we were able to purchase two corrugated iron water tanks which will replace tanks at the northern and western side of Q3.



The first of these, a 2000 gallon tank, was installed on the first day utilising an existing concrete pad on the northern side of Q3. In preparation for installation,



the bottom of the new tank was painted with bituminous paint and a mat laid before the tank was manoeuvred into position. It was then plumbed into to existing pipes and tied down using existing steel rods and wooden beams, as was the original tank.

Water from existing tanks was transferred across to provide ballast. Later a new down-pipe was fitted from guttering installed at a previous working bee. Given Tasman Island's average annual rainfall of about 900mm, there should be no trouble in filling this and other tanks on the island!

A smaller 750 gallon tank, purchased at the same time, will replace one missing (blown away!) from the back of Q3, at a future working bee.

Electrical work

Ian McKendrick, an electrician from Launceston familiar with remote area work, spent several days meticulously checking existing wiring before going ahead with the proposed reconnection of power through existing underground conduits. Fitter and island engineer, Chris Creese rethreaded existing pipes to rejoin the existing link from the Oil Store to Q3, through a stainless junction box (made by Chris) at the site of the collapsed engine shed. This will avoid the hazards of long extensions cords lying in the grass. Light and power is also available in the Oil Store.



Lights on at Quarters 1, first time in 30 + years

Ian continued checking connections in both Q2 and Q1 and, by the last night, power was also reconnected to these two houses – albeit only two lights in each house. Prior to leaving, power to Q1 & Q2 was again isolated, pending further work.

Mowing and Brushcutting

Despite having been mown only a month ago, all areas were again mowed or brushcut and clippings raked up and removed. This included the Bureau of Meteorology's weather station site and the area around the lighthouse and helipad.

Weeding

Qug McKendrick-King continued with weeding started with a grant from the Australian Government's Caring for our Country Community Action Grant in 2007 and continued as Stage 2 with another grant in 2010. After a day's exploratory, checking previous work, Qug commenced a programme of spraying of Californian Thistle beyond Q1 on both sides of the track. Some plants are showing signs of distress but all will require repeat treatments on successive visits to be a complete success.



Where is Chris going to tip Erika out?

Rotary Open Day

Rotary's programmed Open Day was held in near perfect weather. Thanks to AMSA, the lighthouse was opened for the day. Lighthouse tours were conducted by Lyndon O'Grady, an officer from the Australian Maritime Safety Authority and FoTI's Chris Creese while former lightkeeper, John Cook, regaled visitors with stories of the 'old days'.

Both Erika and David assisted with helicopter marshalling for the 50 or so visitors who came and went during the day

We were pleased to hear many positive comments from the visitors. The light station must have looked good as some thought that there was a permanent caretaker on the island!

A successful end to a successful working bee!
Thank you to everyone.

Erika Johnson

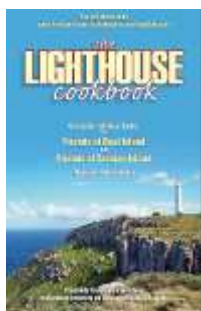
Working Bee Coordinator

Farewell to the feral cats?

There have been regular visits to the island this year by the Feral Cat Eradication Project team and apparently there is **now possibly only one cat left**. The project is a co-operative effort between Wildcare Inc (through the Tasmanian Coast Conservation Trust fund), PWS and DPIPWE. Rob Pennicott of Bruny and Tasman Island Cruises contributed \$65,000 to the fund for the Tasman Island project. A detailed update on the project from PWS Senior Ranger Luke Gadd will be forwarded to FoTI members shortly.

The Lighthouse Cookbook – On Sale Now

Selling Fast



Only 19.95 plus postage and handling – is also available in selected bookshops soon.

A fabulous compilation of tried and true recipes for all the lovers of the outdoors, wild places and good food.

Phone 03 6223 6761 to place your order.

Email: lighthousecookbook@bigpond.com or

All proceeds from the sale of **the Lighthouse cookbook** will fund restoration work by volunteers on Deal Island and Tasman Island Light stations.

Fundraising

New batch of Tasman Island Beanies for Sale



If you missed out last time!
Cost: \$15 (GST incl) plus p&h
Place order by emailing
deewebb@live.com.au

Details for payment and delivery will be sent on the placement of order.

FoTI – Whats going on

Cataloguing and Crating of Cape Sorell Lens
Preparation for the 2011 Wooden Boat Festival
Creation of the FoTI Image Database