

IN THIS ISSUE

- 1 Intro
- 2 **What's on**
- 3 Tasman plaque
- 4 April Working Bee: a pictorial view
- 5 A Pictorial view continued
- 6 Bits and Pieces
- 7 Lighthouses to our North
- 8 Calendar & Exhibition
- 9 Cape Sorell lens project
- 10 From the Archives
- 11 Merchandise for Sale
- 12 National Volunteer Week

The long hiatus since the last newsletter doesn't mean that FoTI has gone into hibernation. Quite the opposite!

February saw FoTI and other Island groups at the Australian Wooden Boat Festival.

FoTI 's March meeting was held at the Eagle Hawk Neck Hall which was an opportunity to meet Tasman Peninsula residents and enlist new volunteers.

Then there was the lead-up to FoTI's first working bee for the year. In April, ten eager volunteers spent ten days on Tasman, enjoying the island's spectacular views while working to conserve the lightstation buildings and environment.

And there's the ongoing project to repack the Cape Sorell lens ... the Lighthouses of Tasmania Calendar and preparation for FoTI's next working bee ...

David Edgar's fascination for Tasman Island is evident at his new exhibition of charcoal drawings, now showing at the Handmark Gallery until 23 June.

None of the above would happen without volunteers—not only FoTI, but the wider community of Wildcare of which we are just one part. Thank you to you all ...

Erika



**Congratulations & a belated Happy Birthday to La Prez, Carol Jackson, who celebrated an auspicious birthday recently as well as officially retiring from the workforce. More time for her passions—cooking, her garden & of course, FoTI!**  
Photo: Ian Ross

CHECK OUT OUR FACEBOOK PAGE AT <https://www.facebook.com/FriendsOfTasmanIsland>



Have you been to a FoTI meeting lately? These gatherings, held at the Derwent Sailing Squadron are full of informed discussion and camaraderie. Read on to see the number of projects which have been underway over the summer and **what's planned for the winter .... A meal is also available after the meeting.** Why not join us!

#### Biennial Australian Wooden Boat Festival

The AWBF has come and gone. Unfortunately, the positioning of our stand was far from ideal. Added to that was the fact that the volunteer groups were not included in the printed programme so even Festival staff were unable to direct enquiries! This resulted in a very poor return for our four days hard work.

A large group of volunteers joined NRM South to celebrate National Volunteer Week in May. See page 12 for more details...

#### Working bees

See FoTI members at work and play at our first working bee of the year. The ten days on the island culminated with flights off Tasman thanks to the Rotary Club of the Tasman Peninsular. Eighty people took advantage of Rotary trips **and there were plenty of positive comments about FoTI's work.** See Page 4 & 5...

#### Cape Sorell Lens project

This ongoing project has kept Chris Creese busy, together with offsidiers Gary Gay and Greg Bell, See Page 9 for further details.

#### Make your own cardboard model of Tasman Island lighthouse

**Thanks to AMSA and Lyndon O'Grady, we have cardboard cut-out kits of the Tasman Island lighthouse for sale.** These celebrate the centenary of AMSA & the Australian Government's involvement with lighthouses. These and other merchandise are for sale to raise funds for our work See Page 11

#### Coming up:

On 15 June, 2015, Australia Post will issue a set of lighthouse stamps to celebrate 100 years of Commonwealth operation of Australia's lighthouses. The Tasman Island lighthouse, along with Cape Byron, North Reef and Cape Leeuwin lighthouses will be featured.

Congratulations John Ibbotson ([www.lighthouses.com.au](http://www.lighthouses.com.au)) whose photographs were used for the stamps.



Have a look at the new Wildcare web site <http://wildcaretas.org.au/>

**Look at the latest news on the Home page or click on Branches to see FoTI's Tasman Island web page.**

#### Facebook page

A fantastic collection of anecdotes, photos, historical and up-to-date information about Tasman and other lighthouses around the world. Have you got something to contribute, add a comment or just click to like us!

<https://www.facebook.com/FriendsOfTasmanIsland>

On the final day of the April working bee (Saturday 11th April) the annual trip by the Rotary Club of the Tasman Peninsular brought over 80 visitors to Tasman Island. Thanks to AMSA's representative, Graham Strutton, the lighthouse was open for inspection with FoTI's Chris Creese and Karl Rowbottom assisting with tours.

Arranged to align with this year's centenary of the Australian Government's management of the aids to navigation network, a plaque, dedicated to lighthouse keepers and their families for their contribution to maritime safety, was unveiled.

Former lightkeeper, Karl Rowbottom, said a few words to the gathering crowd before the plaque was unveiled by lighthouse kid, Carol Jackson and Elaine Bell, great-grand-daughter of the first lighthouse superintendent on Tasman Island, George Johnson.

Amongst the visitors was Wildcare board member, Shane Pinner.



Photo: Amanda Thomson



Wildcare's Shane Pinner



AMSA's Graham Strutton

Photos: Erika Shankley

Photo collage: AMSA





Photos:  
Amanda Thomson  
Chris Creese  
Chris Ames  
Elaine Bell  
Ann Fleming  
Jillian Freeman





Thanks to the FoTI volunteers, Rotary & Helicopter Resources pilot, Dave Pullinger - everyone had a great time on Tasman!  
Left to right: Catherine & Wren Bracegirdle, Erika Shankley, Dave Pullinger, AMSA's Graeme Strutton & Rowena Larson .

**BLAST FROM THE PAST**

It's a small world! A *Lighthouses of Tasmania* calendar, received by a friend of a friend in England, brought forth the following snippet of information about the *S.S. Kaikoura*, a ship which had an intimate connection with the Tasman Island lighthouse.

An article in the Mercury on 5 June 1905 reported that '*The Kaikoura landed 274 tons of cargo ... including 92 packages of the Tasman Island lighthouse tower. Those packages weighed 51 tons, and comprised the segments forming the lower portion of the structure.*'



**"Kaikoura belonged to the New Zealand Shipping Co," the email said, "and we have a painting of it on the wall. My grandfather, Leonard Vipan, was 1st officer on the Kaikoura for a number of years. I know he was on board in 1897 but I doubt if he was 1st officer in 1905. The ship was getting old by then, and no longer needed sail and perhaps that's why she was carrying sections of lighthouse and not passengers. She was scrapped in 1907."**

Indeed, further research shows her to have been built in the Clyde in 1884 and she was broken up in Genoa in 1907.

**DID YOU KNOW**

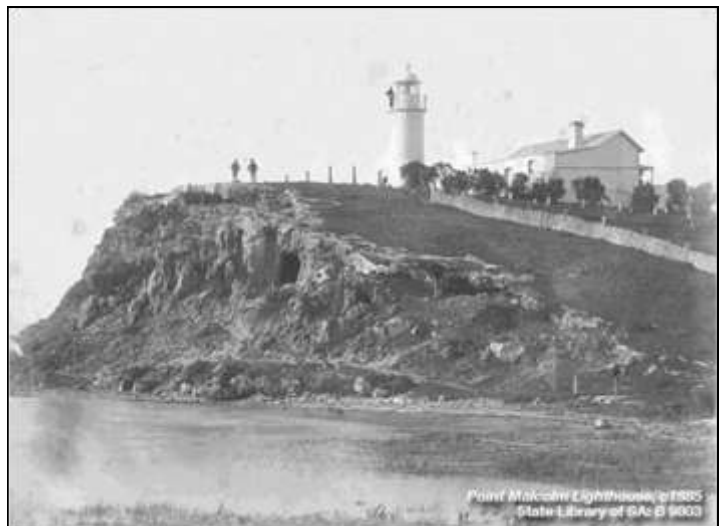
The lighthouse at Point Malcolm is Australia's only inland lighthouse and the 7-metre concrete tower is, perhaps, the nation's smallest lighthouse.

Operating between 1878 and 1931 the light marked the narrow passage between Lake Albert and Lake Alexandrina, at the mouth of the Murray-Darling river system in South Australia. More recently, an automatic light beacon on a pole has been installed next to the old tower, guiding recreational and commercial traffic still using the rivers and lakes in this area.

Named after Neill Malcolm who had taken up land in the area in 1839, the Point Malcolm Lighthouse and the nearby Paltaloch homesteads are listed as significant State Heritage Places and protected by the *Heritage Places Act 1993*.



Photo: Vanessa Smith



Point Malcolm Lighthouse, c1885  
State Library of SA: B 9003



Former FoTI Secretary, Peter McHugh, and his wife Chris, left Tasmania a couple of years ago on an extended voyage in their yacht *Honey Bee*. From Australia, they headed up through Indonesian waters and are currently in Malaysia. Lighthouses, they said, still play an important role in navigating oceans. A couple of interesting lighthouses they visited were Pulau Lengkuas Lighthouse on Belitung Island and the Cape Rachado lighthouse overlooking the Strait of Malacca.

**Indonesia’s Pulau Lengkuas Lighthouse**

Belitung (formerly Billiton) Island lies in Karimata Strait which links the Java and South China Seas west of Kalimantan (Borneo). The Island’s tin mine, NV Billiton Maatschappij, dating from 1851, was

the fore-runner of the global company BHP Billiton.

Off the northern point, its lighthouse built in 1883 by the Dutch colonial government, is still operational. At 57 metres high, the white 16-sided tower was built in kit form, the cast-iron plates being prefabricated by Enthoven at The Hague. Like Tasman Island’s lighthouse, the white light flashes every 7.5 seconds.

**Tanjung Tuan aka Cape Rachado Lighthouse, Strait of Malacca**

At Cape Rachado (Portugese for Broken Cape) is Malaysia's oldest active lighthouse and probably its most important. It stands at the end of a prominent ridge jutting out into the Strait at the northern end of the narrower part of the waterway. The forested ridge has long been recognized as one of the country's most important forest and wildlife reserves.

The site figures in Malay legends and history. The 15th century warrior Hang Tuah is said to have meditated here and left his footprint in a boulder. According to other local accounts, the Portuguese built a lighthouse there in the 1500s, the Dutch building another in 1817. The



Langkuas lighthouse, Indonesia  
Photo Peter & Chris McHugh

coast of Sumatra, on the other side of the Strait, can be seen from the top of the lighthouse.

Built on the foundations of a former fort, the current lighthouse, erected in 1863, consists of a 24 metre high circular tower with a lantern and gallery housing a 1st Order lens. A double storey keeper's house adjoins the tower at the base, both constructed of whitewashed masonry. An additional tower, completed in 1990, was constructed using reinforced concrete, and holds a Measat radio system designed to monitor shipping through the Strait of Malacca.



Cape Rachado lighthouse, Malacca Straits  
Photo Peter & Chris McHugh

## LIGHTHOUSES OF TASMANIA

### CALENDAR 2015

The *Lighthouses of Tasmania* Calendar is a major fund-raiser for Friends of Tasman Island Wildcare Inc.

The 2016 calendar will focus on formerly manned lighthouses – Tasman, Maatsuyker and Deal Islands, Cape Bruny, Low Head, Ed-dystone Point, Table Cape, Mersey Bluff, Cape Sorell/Macquarie Heads, Cape Wickham/ Currie Harbour and Swan/Goose Islands.

The selection panel is now choosing the images to include in the calendar.

FoTI's 10th calendar should be the best ever! So don't miss it.



### EXHIBITION AT HANDMARK GALLERY

FoTI volunteer and artist, David Edgar, is passionate about Tasman Island and has exhibited both in Tasmania and overseas. His work features drawings in charcoal, a medium which lends itself to portraying Tasman's rugged, dramatic landscape.

For his Master of Fine Arts exhibition in 2010, the walls of the Plimsoll Gallery literally became the dramatic cliffs and grasslands of Tasman Island—each wall filled from floor to ceiling with composite charcoal drawings.

<http://www.davidedgar.com.au/index.php?itemid=70#.VXZ1UtKqqko>

Exhibitions at the Handmark Gallery in Salamanca Place followed in 2011 and 2013

<http://www.davidedgar.com.au/index.php?itemid=51#.VXZ3WtKqqko>

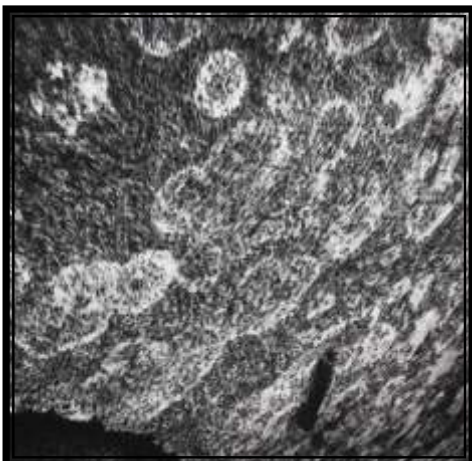
<http://www.davidedgar.com.au/index.php?itemid=148#.VXZ3otKqqko>

His latest exhibition, together with ceramicist Andrea Barker, is now open at the Handmark Gallery, 77 Salamanca Place.

Have a sneak preview at:

<http://handmark.com.au/exhibitions/gallery-exhibition-hobart-david-edgar-andrea-barker/>

*Rudimentary*  
David Edgar



*Cultivation*  
David Edgar  
2015

*Locality*  
David Edgar  
2015





Thanks to AMSA's Lyndon O'Grady, FoTI have become custodians of the 2nd Order Fresnel lens from the Cape Sorell Lighthouse—similar to that pictured at right.

Originally stored in a building adjacent to the Mt Canopus Observatory, the crates—with their fragile pieces of polished, cut-glass - were suffering from years of neglect.

Using Chris Creese's Mt Nelson workshop, a team of three FoTI volunteers have now constructed twenty-four new crates to house the individual components.



A small team of volunteers have now packed one each of the three different sized segments to check that the foam padding was adequate. That completed, the boxes will be prepared ready for repacking all 24 segments. The lens will then be placed in storage until a venue can be found to display this magnificent piece of engineering. Any ideas?

Thank you Chris, Gary & Greg for a job well done!



Photos: Erika Shankley



The following Rules and Regulations for Pay and Leave of Superintendents and Assistants, and for Passages of themselves and Families to and from Light House Establishments at Swan Island, Goose Island, and Kent's Group, were adopted at Meetings held by the Marine Board, on the 16th August and 13th September, 1878, all Members of the Board being present.

	Pay on First Appointment.	After Three Years' Service and Good Conduct.	Remarks.
Superintendents ...	PER ANNUM. £155	PER ANNUM. £140	£140 will be the maximum of Superintendents.
First Assistant ...	£85	£90	£90 will be the maximum of First Assistants.
Second Assistant ...	£75	£80	£80 will be the maximum of Second Assistants.

Note.—Men will not be eligible for the post of First Assistant unless they have had Three Years' continuous Service as Second Assistants at a Light House, with good conduct, and are able to keep the necessary Light House Accounts and Receipts.

**REGULATIONS FOR LEAVE.**

1. No Superintendent with less than Three Years' continuous Light House Service shall be entitled to Leave of Absence unless with the sanction of the Board, or in cases of Sickness.

In the former case an approved Substitute must be found, who will receive the pay of the Superintendent on Leave.

2. After Three Years' continuous Light House Service, with good conduct, Superintendents and Assistants at King's Island, Swan Island, Goose Island, and Kent's Group, shall be entitled, once in every three years, to Six Weeks' Leave of Absence; and the Superintendents and Assistants at Low Head, South Brun, and Iron Pot, shall be granted Fourteen Days in each year, after Three Years' continuous service and good conduct.

3. Superintendents must give timely notice to the Board of their wish to avail themselves of the foregoing Rule, and be able to report that the duties of the Station can be efficiently discharged in their absence by the remaining Assistants.

In the case of Assistants, the sanction of the Superintendent shall be sufficient.

During the absence of any Superintendent, the Senior Assistant shall be the Acting-Superintendent at the Station, *pro te*.

**REGULATIONS FOR PASSAGES.**

1. The Board will allow half Passage Money to Superintendents and Assistants proceeding and returning on leave, under Rule 2; and in cases of Sickness, full Passage Money to and from their Stations.

2. Free Passages will be granted to the Wives and Families of Superintendents and Assistants at Light Houses to and from the Station, excepting when such Superintendents or Assistants leave the Service within three years, or are dismissed, or are proceeding on Leave of Absence.



TAHO NS3195-1-3253  
Jack Thwaites collection



TAHO NS3195-1-3269  
Jack Thwaites collection



Photos  
Elaine Bell

Inserted in the Swan Island Log book 1880-1886, TAHO MB/2/52/1/6



Photo Alan McCullum collection



Photo David Ingram

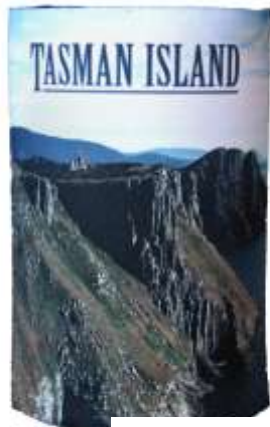
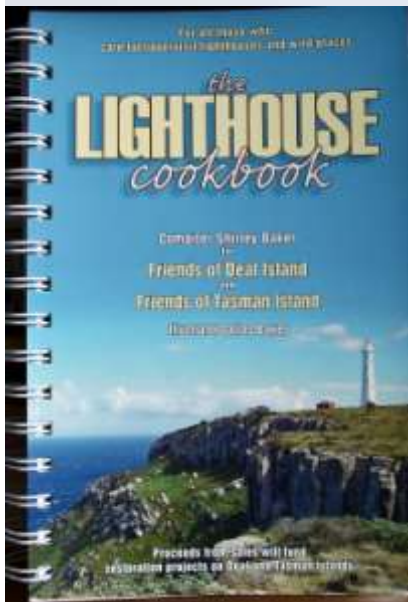


**SUPPORT FoTI'S FUNDRAISING EFFORTS!**

- Tasman Island beanies \$15.00
- Gift cards \$3.00 each
- Tasman Island hand book \$5.00
- Lighthouse Cookbook \$20.00
- Cardboard model kit of Tasman Island lighthouse \$5.00
- Stubby holder \$10.00

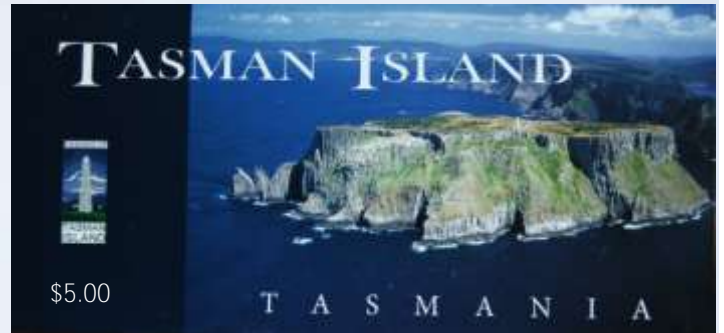
All prices include postage—just email [friendsoftasmanisland@gmail.com](mailto:friendsoftasmanisland@gmail.com)

\$20.00

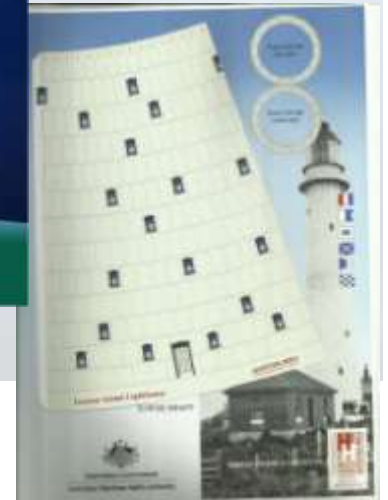


Stubby holder \$10

Beanies \$15



Build your own Tasman Island Lighthouse Cardboard model kits \$5.00



Selection of cards \$3.00 each



Thank you to NRM South, who hosted a barbecue for volunteers at the Sustainability Living Centre, Mt Nelson, during National Volunteer Week in May.

*This is the true joy in life, the being used for a purpose recognised by ourself as a mighty one; the being a force of nature instead of a feverish, selfish little clod of ailments and grievances, complaining that the world will not devote itself to making you happy.*

*I am of the opinion that my life belongs to the whole community, and as long as I live it is my privilege to do for it whatever I can.*

*I want to be thoroughly used up when I die, for the harder I work, the more I live. I rejoice in life for its own sake. Life is no brief candle to me; it is a sort of splendid torch which I have got hold of for the moment, and I want to make it burn as brightly as possible before handing it on to future generations.*

George Bernard Shaw



Photos Erika Shankley



Photo Erika Shankley



Photo NRM South



Photo Ruth Osborne



*One volunteer is worth ten pressed men  
(It's a naval expression used again and again)  
So here's to the Friends and their mission bold  
And time well spent in Tasman's fold!  
Helen Gee, March, 2010*