



Wildcare Friends of Irapuna Coast update

Zoom gathering 9 September 2020

Wildcare, Friends of Irapuna Coast, PWS, NRM North

In lieu of a Irapuna Community Weekend for 2020



Background, history (welcome new members)

- Irapuna Community Weekend since 8 years ago
- About place and people; sharing, culture, learning, coast-caring; social, landscape, cleansing



- Aboriginal culture, lighthouse heritage, Ansons Bay community, Tas. Walking Co., PWS, BODC
- the usual and unusual participants, from all over, inclusion

Irapuna Community Weekend 2019 Spurgings



Irapuna Community Weekend

- Last few years covered from Stumpys to Ansons Bay mouth

Marine Debris 2019

Top 10

- 1 Plastic bits & pieces hard & solid 178
- 2 Glass or ceramic broken 157
- 3 Rope & net scraps less than 1 metre 72
- 4 Aluminium cans 49
- 5 Foam insulation & packaging (whole and remnants) 41
- 6 Glass beer stubbies & pre-mixed alcohol bottles 37
- 7 Processed timber, pallets & other wood 30
- 8 Lids & tops, pump spray, flow restrictor & similar 30
- 9 Plastic packaging food (wrap, packets, containers) 23
- 10 Plastic bags supermarket, garbage, dog poo, ice 22



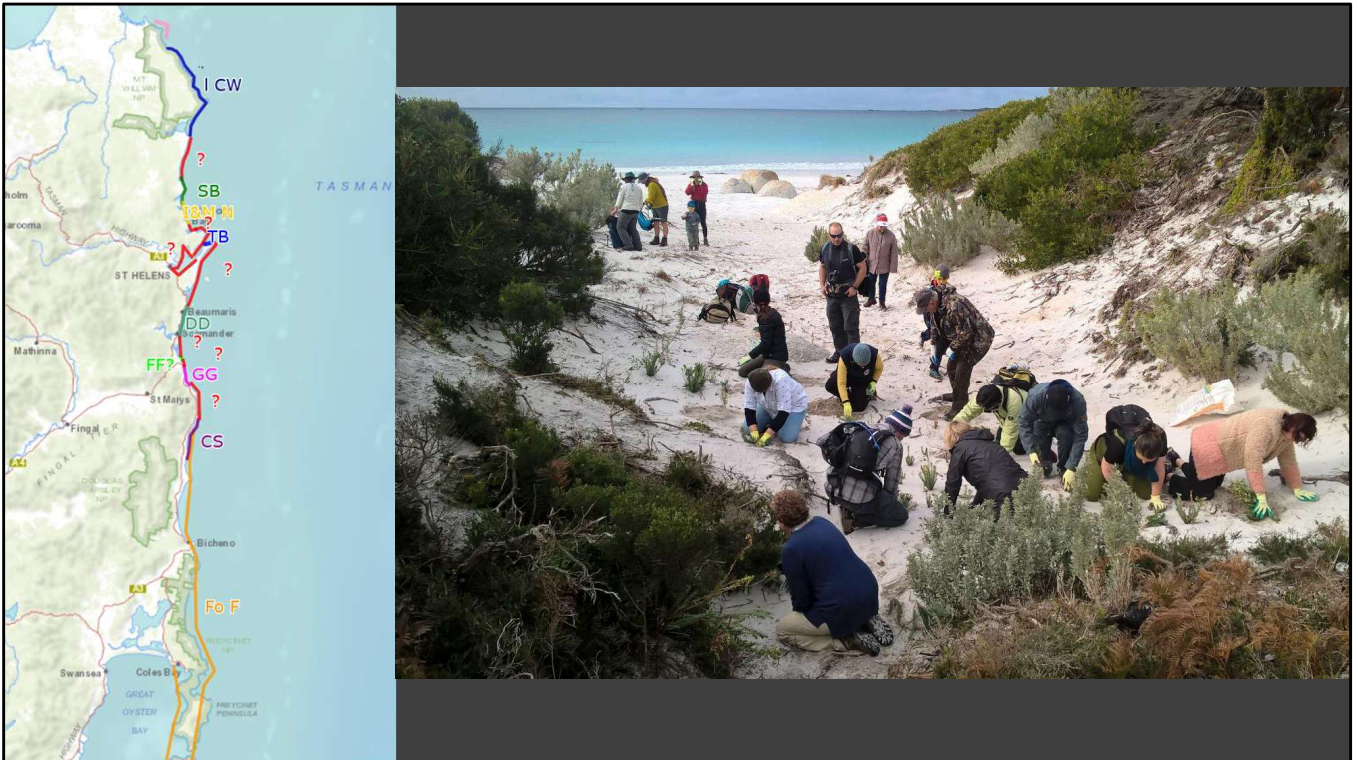
- Marine debris



- Getting on top of sea spurge



- when it would otherwise take over the beaches



Sea Spurge Free East Coast – Extending the idea to the east coast

- Fo Freycinet on top of coast south of Bicheno
- Others and projects (Green Army) worked/ing on other beaches
- Sea Spurge Summit, with SPRATS lessons, Falmouth 2018
- Not a huge amount on the east coast, quite doable

hooded plover
oyster catcher
sooty oystercatcher

50% of the breeding populations, are in Tasmania (half the Australian, global populations).



- Habitat of shorebirds a focus – purpose and constraint



- We have a competitive advantage – many hands

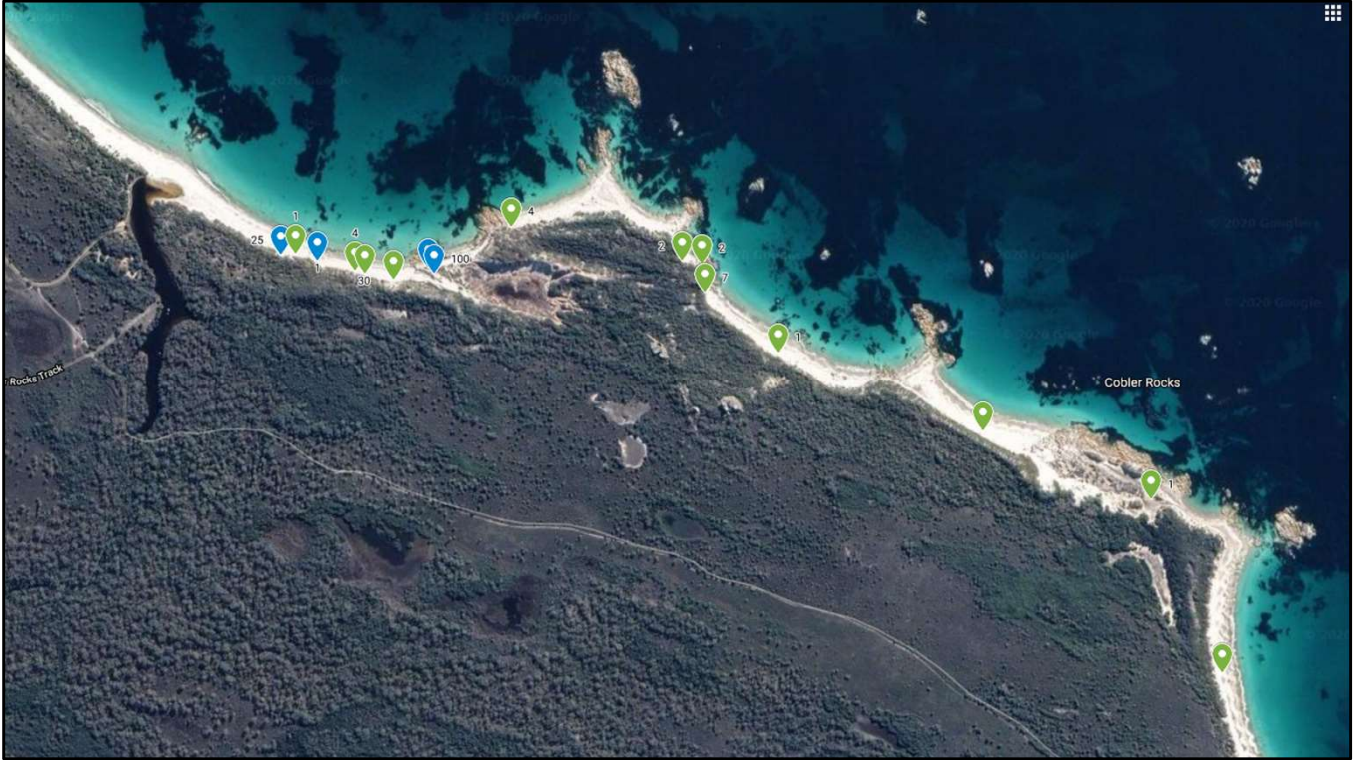


- And we are not so remote as SPRATS



- Can keep sea spurge out

How to go about it?



- Coverage of whole coast, with lots of different people contributing,
- Once, twice a year, consistent and ongoing search and control

status	latitude	longitude	ss_presence	seaspurge_number	ssadult_pcpt	lengt_h	sspatch_width	patch_area	sscovera_ge_pcpt	treatment_app_lied	ss_not_trea ted_num	ss_treat_p_hrs	obs_date	gps_horizon tal_accuracy
patrol	-40.8879	148.241564	yes	1	0	1	1	1	5	pulled_hand	0	0.1	2/08/2019	5
controlling	-40.888	148.242042	yes	1	0	1	1	1	2	pulled_hand	0	0.1	2/08/2019	5
patrol	-40.8882	148.242853	yes	4	50	10	3	30	2	pulled_hand	0		2/08/2019	5
patrol	-40.8883	148.243058	yes	30	25	10	20	200	2	pulled_hand	0	0.5	2/08/2019	5
patrol	-40.8884	148.243689	yes	2	0	5	5	25	2	pulled_hand	0	0.2	2/08/2019	5
controlling	-40.8882	148.244431	yes	40	25	50	15	750	2	pulled_hand	10	0.4	2/08/2019	5
controlling	-40.8883	148.244564	yes	100	25	50	50	2500	2	pulled_hand	20	1	2/08/2019	5
patrol	-40.8875	148.246241	yes	4	50	5	5	25	2	pulled_hand	0	0.2	2/08/2019	5
patrol	-40.888	148.249949	yes	2	10	8	1	8	2	pulled_hand	0	0.1	2/08/2019	5
patrol	-40.8881	148.25037	yes	2	50	3	1	3	2	pulled_hand	0	0.2	2/08/2019	5
patrol	-40.8886	148.250444	yes	7	25	25	2	50	2	pulled_hand	0		2/08/2019	5
patrol	-40.8895	148.252026	yes	1	0	1	1	1		pulled_hand	0	0.1	2/08/2019	5
patrol	-40.8908	148.256482	no										2/08/2019	
patrol	-40.892	148.26012	yes	1	0	1	1	1	2	pulled_hand	0	0.1	2/08/2019	5
patrol	-40.8948	148.261659	no										2/08/2019	
patrol	-40.8969	148.262485	yes	1	100	1	1	1	5	pulled_hand	0	0.1	2/08/2019	5
controlling	-40.8972	148.262597	yes	3	75	20	1	20	2	pulled_hand	0		2/08/2019	5
patrol	-40.8975	148.262875	yes	2	50	1	1	1	2	pulled_hand	0	0.1	2/08/2019	5
controlling	-40.8996	148.264458	yes	1	100	1	1	1	5	pulled_hand	0	0.1	2/08/2019	5
controlling	-40.8999	148.265168	yes	1	100	1	1	1	5	pulled_hand	0	0.1	2/08/2019	5
controlling	-40.9002	148.26589	yes	3	75	5	1	5	2	pulled_hand	0	0.1	2/08/2019	5
uncontrolled	-40.9005	148.266661	yes	250	90	15	8	120	60	none	250	0	2/08/2019	5
uncontrolled	-40.9006	148.266946	yes	750	50	8	8	64	60	pulled_hand	500	1.2	2/08/2019	5
controlling	-40.9006	148.26708	yes	100	10	20	10	200	2	pulled_hand	0	0.5	2/08/2019	5
controlling	-40.901	148.267404	yes	15	75	20	5	100	2	pulled_hand	0	0.2	2/08/2019	5
controlling	-40.9005	148.266429	yes	2500	10	50	10	500	5	pulled_hand	1200	4	2/08/2019	5
patrol	-40.903	148.267914	yes	1						pulled_hand	0		2/08/2019	5
patrol	-40.9045	148.267571	yes	2	0	1	1	1	2	pulled_hand	0	0.1	2/08/2019	5
patrol	-40.905	148.267467	yes	2	0	7	1	7	2	pulled_hand	0	0.1	2/08/2019	5

- Systematic method – search, control, records
- Need information to know its working, no gaps and missed sea spurge, stop outbreaks, follow-up and the constant seafaring incursions



- Group and regular activities, small groups to individual walkers, visitors can: a diversity of contributors means more effort, coverage and impact
- Seasonal, to avoid the beach nesting and migratory shorebirds, in a dire situation
- Safe – working on beaches, volunteering, means PWS is considered ‘employer’ for workplace safety of activities– register with PWS, communicate, OHS, Wildcare/ Landcare Tas.
- Have added requirements of COVID safe workplace and plan



- We have another competitive advantage – amazing coast that lots of different people love, walk and care about