

## **Wildcare Friends of the Henty Annual General Meeting 2023**

**Date:** 28th July 2023

**Time:** 7:00pm

**Location:** Strahan Fire Station, 18 Reid Street

### **Agenda:**

Meeting opened 7:10pm

#### 1. Acknowledgment of country (Luke)

We acknowledge the Mimigen people and Pternidic people as the traditional owners of the land where we meet. timkarik is a name for the Strahan area. Macquarie Harbour has been a significant place for Tasmanian Aboriginal people throughout history. During George Augustus Robinson's missions to the southwest and northwest of Tasmania, Aboriginal people were held at Sarah Island. As landcarers, we are always thinking about traditional land use and cultural connection to country.

#### 2. Attendance and acceptance of 2022 AGM minutes

Attendance: Harriet Brinkhoff, Luke Cooper, Bin Ling Ho, Sam Kohne, Sybil Robertson, Sagar Fernandes, Manuel Zuniga, Dianne Coon, Cynthia Schaap (Landcare Tasmania), Petita Abblitt, Dan Parkhurst (Parks and Wildlife), Beth Millard, William Oliver (Parks and Wildlife), Eloise Carr (Australia Institute), Bec Howarth (Environment Tas), Evie Simpson (Australia Institute), David Jiminez-Illan

Amazing turn out, thank you all so much for coming!

Apologies: Marianne Gee

Acceptance of 2022 AGM minutes: Accepted by Dianne, seconded by Dan

#### 3. Update on current projects (Luke)

- **Funding from Landcare Tas (Cynthia)**

We are very lucky that Landcare Tasmania has secured funding for landscape scale projects for the West Coast for the next 2 years. Manheim Cox and Landcare Australia are the funding providers. This funding is for removing weeds, ecosystem restoration, community engagement, and forming working partnerships with businesses and other stakeholders. A workshop was held in Strahan a few months ago - weed ID and management - this was very well received with people coming from Zeehan, Tullah, Gormanston and Queenstown

to attend. It was a great start to the project and also a great way to support local businesses with catering etc..

A project managing radiata pines at Swan Basin will soon get underway. We hope that this project can be extended to a much larger scale. The seed bank seems to still be very good, which is promising for natural revegetation. We will be receiving advice and guidance from Todd Dudley who has worked on a similar project near St Helens. The project is starting off at a trial site at Swan Basin - David and Luke are going to be removing pines that have jumped across the road from the plantation. See map below minutes for distribution of pines in the work area. There are other big weed problems out there - predominately foxgloves. Landcare Tasmania are asking for advice on projects/events in Strahan that would be beneficial. Other possibilities include getting on top of the gorse, using the Henty River as a boundary and a cat trapping project.

- **Ocean Beach Trail**

Montpellier Broom was probably spread out there when the track was a 4wd track and used as a local rubbish dump. We have been working consistently on this since the formation of this group. We have made great progress! There is still a fair bit of Broom out in the coastal grasslands near the beach. They are flowering early this year, hence the working bee has been moved forward by about 6 weeks. Should have a good sized group out there tomorrow (29th).

- **Ocean Beach Trail Signs**

Active Stahan had signs made, but never installed. They were in the Parks shed for a long time, but we finally installed them last year. Great to have them in, they provide some good information.

- **Henty Backwater**

We went out there in April with UTAS Landcare, Parks and Wildlife and FrOTH, and made good progress with removing gorse. There is plenty of followup work to do. We are hoping native regrowth will shade out gorse seedlings. Henty River is a good boundary, things are pretty dire north of the river. There is a new contractor for road maintenance so hopefully they will be better at stopping the spread of gorse seed. There is heavy erosion at Ocean Beach and Henty dunes, the landscape has changed dramatically over the last couple of decades. Whales from 2020 burial have re emerged. There is an interesting paper about this - we will distribute it. It seems like it is due to sea level rise and more energetic wave action.

- **Luke's personal thoughts about lupins**

This might be a possibility for allocating some of the Landcare Tasmania funding. Lupins and marram grass were historically planted at the Henty Dunes and Macquarie Heads to stabilise the sand. Marram grass is probably too far gone, but lupins could be more manageable. They are in the Fabaceae family, so fix

nitrogen into the soil (sand) and can easily grow on bare sand, and then change the sand to be more nutritious, so then the sand becomes habitat for other weeds. Henty Dunes are significant for threatened species and are also a culturally significant place for the Aboriginal community. There are some very large patches of lupins in the Henty Dunes, see map below minutes. Cutting and leaving them in place isn't ideal because they become fertiliser. Logistically it's hard to remove the material. It is better to hand pull than cut and paste for soil nitrogen reasons, but many are too big for this. NRM cradle coast have weed management at Henty Dunes in their 10 year plan, so this can contribute to future funding.

- **Feasibility of spraying weeds along the Henty River**

We did a kayak survey along the Henty River in early 2022, we found pampas grass and New Zealand flax. It might be possible to do this by land over summer when the water level is low. It's not particularly high on the Parks and Wildlife priority list, but it could be an option to do that with parks in a boat, or by land. It would be much simpler to do this as a land based thing because of safety.

#### 4. Standing Up for the Skate fund raising project (Dianne)

Maugean Skates are endemic to Macquarie Harbour. They were thought to be in Bathurst Harbour too but that is no longer the case. They are now seriously endangered, their numbers have reduced by half since 2014, which is very worrying. There is angst about fishing restrictions put in place to protect the skate. Cradle Coast NRM got funding for a community awareness project last year, which was very successful. An art exhibition was held in town, with art pieces then being distributed around town to make a "skate trail" which finished up in March. Some artists then chose to sell their works. A play written about the whale strandings on Ocean Beach is premiering in Geelong in a couple of weeks. The back page of the program will feature the Maugean Skate, with a link to a fundraising page on our Wildcare Friends of the Henty page. We hope to commission some artworks and have them on display in town. The fundraising project is called "Standing up for the Skate". We may need a sub group to be in charge of distributing this money and managing this project. Dianne is happy to be in this group, so is Beth and Sybil. Luke is also happy to have input but won't be around much. Maybe we need some kind of merchandise... stickers? T-shirts? We want to raise the local profile of the skate and invoke community pride. We need to make the skates seen, as people generally don't see them. Perhaps we could commission Danielle from the coffee shack to do a skate enamel pin or skate bumper stickers. First Dog on the Moon did a Maugean skate cartoon - Eloise to send details.

#### 5. Sea Spurge biocontrol trial results (Luke)

A Sea Spurge biocontrol has been developed. Sea Spurge grows in the soft sand behind beaches, where birds nest. The biocontrol was released on Ocean Beach near the end of the Ocean Beach Trail and part of the trial process. The biocontrol is a fungus and is specific to

Sea Spurge (i.e. it won't harm other species). The results to date of the trial show, essentially, that it is going pretty well, see tables of results below minutes. The fungus growth looks like lesions on the stems of Sea Spurge. Dispersal is very slow unfortunately. We will check it out during our working bee tomorrow. Ocean Beach Sea Spurge is often impacted by active seas, especially over winter.

#### 6. Financial report (Luke)

See Financial Report below minutes. We spent \$36.36 this year. Let's hold on to the money we have for now, no need to spend it if we don't need to. Moved by Sybil, seconded by Beth. We are very lucky to have spent so little, thanks to the generosity of individuals, organisations and businesses who have supported us.

#### 7. Potential Feral Cats Project on the West Coast (Cynthia)

This is a broader Landcare Tasmania project. We want to encourage people to work on removing feral cats from local patches, come up with cat management plans, and work with councils and community groups. Landcare Tasmania have been running workshops and info sessions around the state. With feral cats, it's not only predation of native wildlife, there are also the effects of toxoplasmosis. We have had lots of interest from farmers. UTAS is working on AI for camera traps identifying cats. Landcare Tas would love to do a workshop in Strahan.

#### 8. Social media (Luke)

Let's make a facebook page! Let's make it pretty minimal - it would be good for us to be google-able, and also can use the page to promote events. Beth please make us a cool logo - preferably embroidered.

Luke agreed to set up the page.

#### 9. Parks Update (Dan)

Parks and Wildlife now have 8 Staff in Queenstown and Strahan, which is much better than this time last year! 4 positions have just started for biosecurity, with one officer in each region and a statewide coordinator. They are hoping to provide some better coordination between different landholders working on weed control, and are also hoping to make a weed plan for the West Coast. There is money there for working on weeds. Reminder from Jenna (NW Volunteer Coordinator) - please ensure we are all registered as NRE volunteers and are logging our hours. Parks are keen to continue with the Henty Backwater work, and have a new side by side weed spray unit.

#### 10. Nominations and elections of president, secretary and treasurer

President: Bin Ling nominates Dianne, Dan seconds it

Vice president: Petita nominates Harriet, Bin Ling seconds it

Secretary: Beth nominates Luke, Petita seconds it  
Treasurer: Dianne nominates Sybil, Bin Ling seconds it  
Mascott: We all nominate Merlin the dog

11. Plan for the coming year (Harriet)

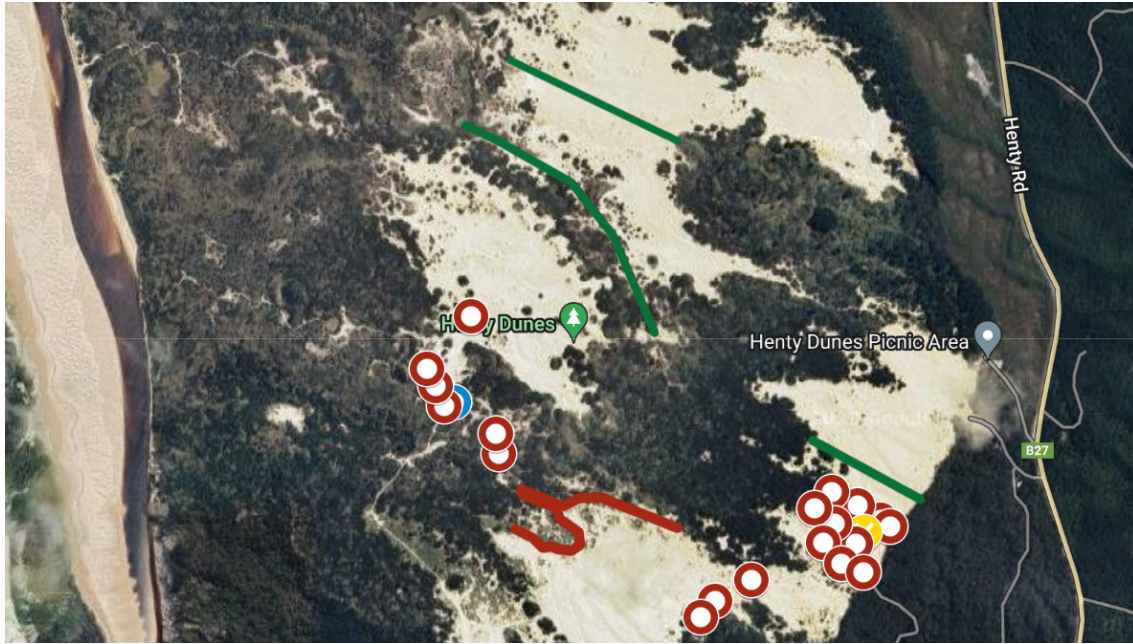
Let's do another weekend trip at the end of March/start of April 2024. No need to decide a date now, but we will definitely give around 6 weeks notice. Saturday mornings would also be great whenever we can. There will hopefully be a workshop on pine plantation restoration with Todd Dudley in September, he is interested in the landscape scale stuff, working with STT land. The current Landcare Tas grant runs until the end of September, but they then have more funding for the year after that. The second grant allocation hasn't been fleshed out into a project yet.

12. Bec from Environment Tas (Marine Campaigns) is here with the Australia Institute staff Eloise and Evie. They are here to talk to locals and hear about what's happening here, what people care about. She would love to keep in touch, and has been added to our mailing list.

13. Eloise and Evie from the Tasmania branch of the Australia Institute are here visiting. They work on policy research for a range of issues, including environmental law. They are trying to work on what the Federal Government's obligations are in regard to protecting the Maugean Skate. They have been in Strahan for a couple of days talking to locals.

Meeting closed 9:07pm

3.



Lupines at Henty Dunes. Each Red dot marks patches of 1 to 100 mature lupines. Red line marks approx 2000 mature lupines. Green lines mark current lupine-free boundaries

3.



Radiata pines at Swan Basin

Green = radiata pine, Yellow X = Gorse, Purple X = Foxglove

Green small square = Loppable, Green large square = handsawable, Green star = Chainsaw required

Thick green line = continuous line of sawable pines

Pink area bottom right = Recently logged pines, great regrowth, mostly native, only a few pines growing back

Green area top right = Good quality bush, big E. nitida, Banksias, dark wet fern gully

Yellow area top left = Pretty good looking regrowth eucalyptus nitida forest. Diversity of native shrubs with some fairly big eucs. Lots of regrowth eucs too.

Blue strip at top = Melaleuca ericifolia swamp forest. Some eroded bank, exposed roots. A few camping areas with bare ground.

Rest of the area enclosed by the road is thick plantation.

5.

Figures from 'Sea spurge biocontrol release in Tasmania: June 2023 update' from SPRATS, Jon Marsden-Smedley

**Table 2. Information collected at each site.**

Attribute	Notes
<i>Sea spurge</i>	
cover	foliage projective cover, %.
height	average, cm.
health	0 = proportion dead. 1 = proportion very unhealthy: <10 live foliage. 2 = proportion unhealthy, 10-50% live foliage. 3 = proportion healthy, 50-75% live foliage. 4 = proportion very healthy, >75% live foliage.
reproductive status	1 = proportion non-reproductive. 2 = proportion flowering. 3 = proportion immature seeds. 4 = proportion fully mature.
number of plants	1 = <~25. 2 = ~25 to 50. 3 = ~50 to 75. 4 = >~75.
approximate number of stems or leaves with lesions and the total number of lesions.	
grasses and sedges	foliage projective cover, % and height, cm.
herbs	foliage projective cover, % and height, cm.
shrubs	foliage projective cover, % and height, cm.

**Table 3. Average sea spurge cover, height, health status, reproductive status and number of stems at each site and each scoring time.**

Site	Oct 21	Apr 22	Nov 22	Apr-Jun 23	Oct 21	Apr 22	Nov 22	Apr-Jun 23	Oct 21	Apr 22	Nov 22	Apr-Jun 23
<i>Stage 1 sites</i>												
	<u>Cover. %</u>				<u>Height. cm</u>				<u>Health status</u>			
Bakers Bch	29.2	36.6	18.7	21.3	32.7	44.3	28.7	36.7	3.6	2.7	1.6	1.5
Low Head	32.1	54.1	22.3	10.7	47.1	62.7	46.0	51.3	3.7	3.0	1.1	0.7
Duck Ck	14.6	11.7	15.1	15.3	28.7	32.7	28.7	34.0	4.0	2.5	1.8	1.9
average	25.3	34.1	18.7	15.8	35.9	46.6	34.4	39.9	3.8	2.7	1.5	1.3
	<u>Reproductive status</u>				<u>Number of stems</u>							
Bakers Bch	1.0	3.9	1.0	3.4	1.7	1.1	2.1	2.5				
Low Head	1.5	3.9	1.4	2.0	1.9	1.6	2.1	1.6				
Duck Ck	1.0	2.3	1.0	2.4	2.7	1.7	1.8	2.3				
average	1.2	3.4	1.1	2.6	2.1	1.4	2.0	2.1				
<i>Stage 2 sites</i>												
	<u>Cover. %</u>				<u>Height. cm</u>				<u>Health status</u>			
Bluff Pt			37.9	25.0	40.0	44.0			3.8	2.2		
Bottle 1			33.8	32.5	40.0	55.0			3.7	3.2		
Bottle 2			29.8	25.0	31.5	39.5			3.9	2.0		
Temma			29.0	14.5	46.5	55.5			3.7	3.0		
Ocean 1			27.3	24.5	46.0	55.0			3.6	1.5		
Ocean 2			20.5	17.9	36.5	37.8			4.0	2.3		
average			29.7	23.3	40.1	48.0			3.8	2.4		
	<u>Reproductive status</u>				<u>Number of stems</u>							
Bluff Pt			1.0	3.1	2.2	2.9						
Bottle 1			1.1	3.8	2.9	2.7						
Bottle 2			1.1	3.3	2.3	2.3						
Temma			1.1	3.9	2.5	1.5						
Ocean 1			1.0	3.8	2.2	1.7						
Ocean 2			1.0	2.5	1.4	1.3						
average			1.0	3.4	2.3	2.1						

Note: number categories for health, reproductive status and stem number are shown in Table 2.



---

**Ocean Beach 1: Horse track, central west coast**

Site location: on foredune 5 m inland from beach.

Transect and plot details: 10 plots at 5 m intervals over 45 m.

---

Peg	Location	Easting	Northing
1	north	356622	5333712
2	south	356608	5333677

---



Ocean Beach 1: Horse track in April 2023.

---

**Ocean Beach 2, central west coast**

Site location: on foredune about 3 m north of un-named creek.

Transect and plot details: 10 plots at 3 m intervals over 27 m.

---

Peg	Location	Easting	Northing
1	east	356660	5334565
2	west	356633	5334564

---



Ocean Beach 2 in April 2023.

---

## **6. Financial Report:**

The only money we have spent this year is \$36.36 on our Landcare Tas membership. We gained \$150 from the Landcare Assistance Program grant in June 2022, but this wasn't reported at the last AGM as we hadn't yet received the relevant financial report from Wildcare. We currently have \$307.41 in the bank.

We are very lucky to have access to resources from PWS, volunteer support from the UTAS Landcare Society, as well as financial support from Landcare Tas that allows us to run working bees at no real cost to the group.

As we haven't spent the funds from our LAP grant, it would be good to have a discussion on how these funds would be best spent. We currently have enough good gear.